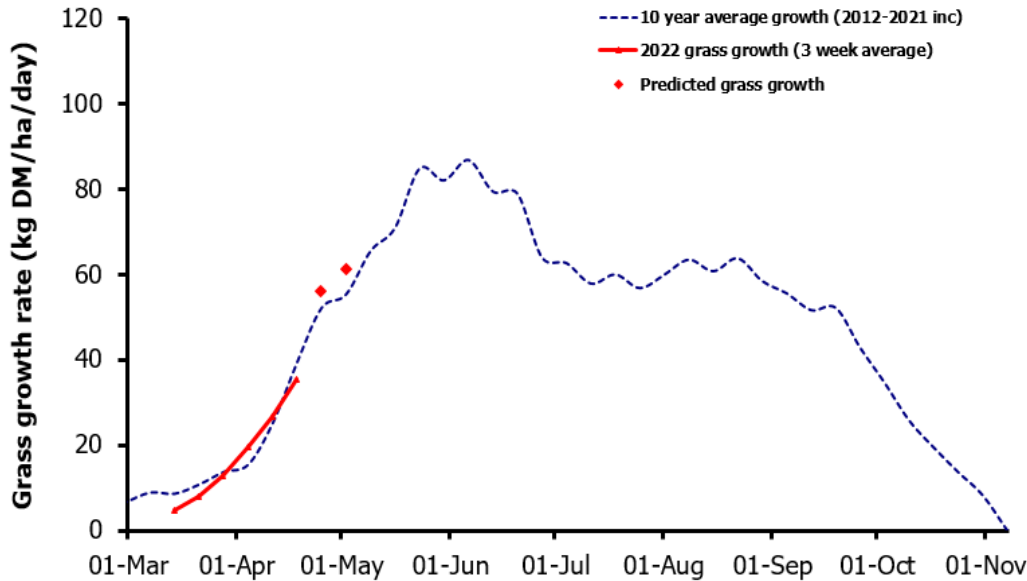
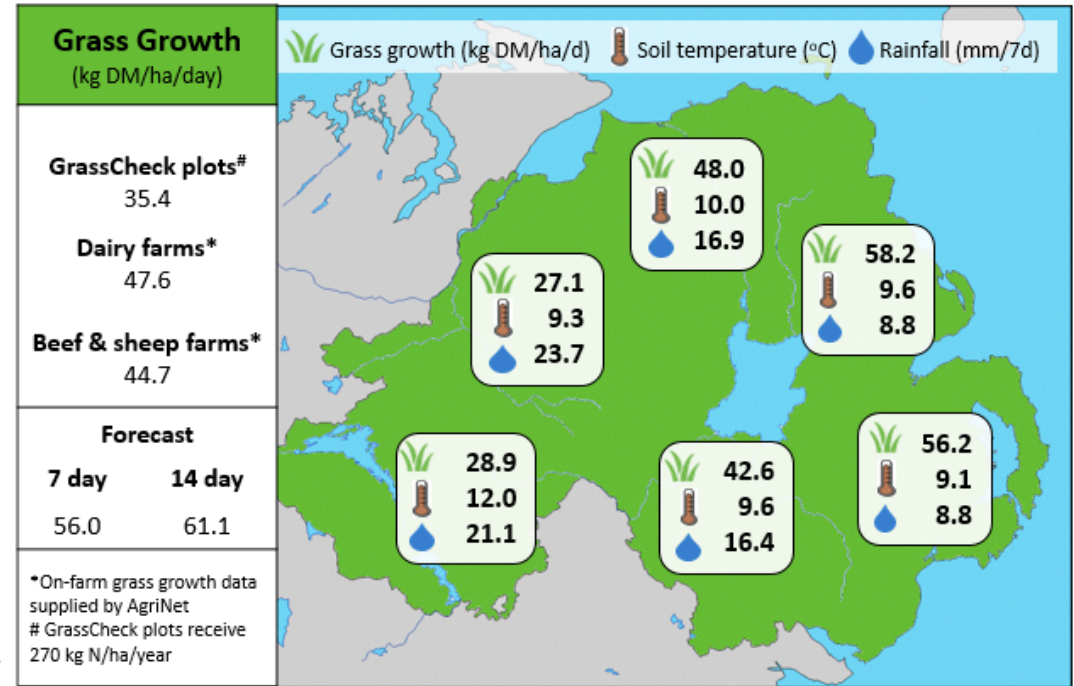


Week Beginning 18th April 2022



MANAGEMENT NOTES:

- Predicted 7 and 14 day growth forecasts are ahead of the 10 year average.
- The recent localised heavy showers and windy conditions have made grazing difficult, however more settled conditions are now forecast.
- Drier conditions will provide an opportunity to achieve target residuals on paddocks grazed in wet and unfavourable conditions in the first rotation.
- Measure grass weekly from now on and have an accurate herd demand.
- Manage the grazing wedge and identify first grazing rotation paddocks which could be removed as bales or closed up for silage, if there is a grass surplus and there is grass ready for grazing in second rotation paddocks.
- Aim to not allow the average farm cover to fall below 2100 Kg DM/ha.



Value of Grass		Grass Quality	
Dairy – maintenance plus (M+) (kg/cow/day)*	20.0	DM (%)	16.4
Growing animals – daily live weight gain (kg/head/day)**	0.99	CP (% DM)	21.0
*M+ calculated assuming: 650kg cow, and 15 kg DMI. Maintenance=75 MJ/day, 5.3 MJ/kg milk **Beef daily gain assuming: 300 kg beef steer, and 6.6 kg DMI. Maintenance=35 MJ/day, 40 MJ/kg gain		WSC (% DM)	12.1
		ME (MJ/kg DM)	11.3