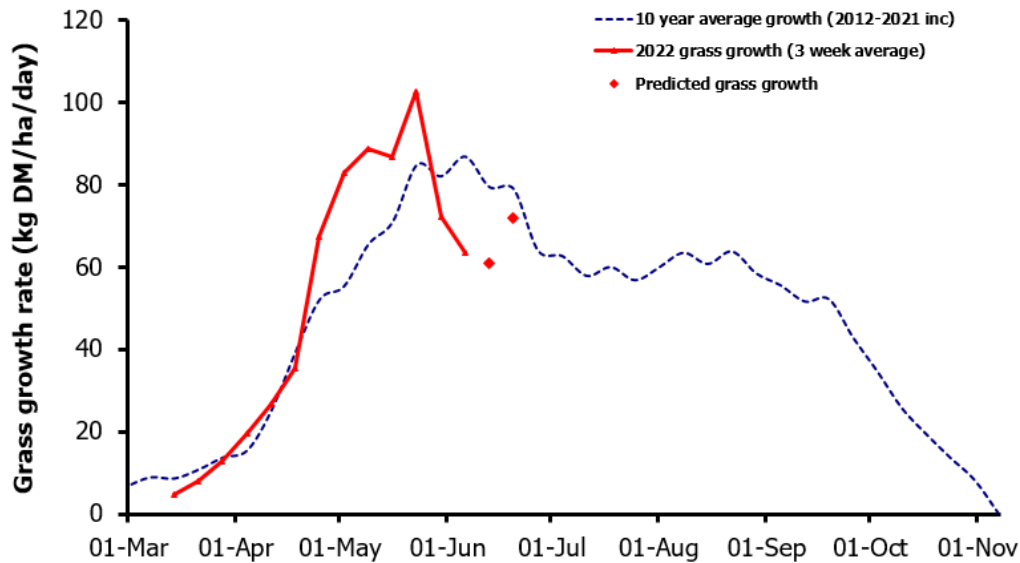
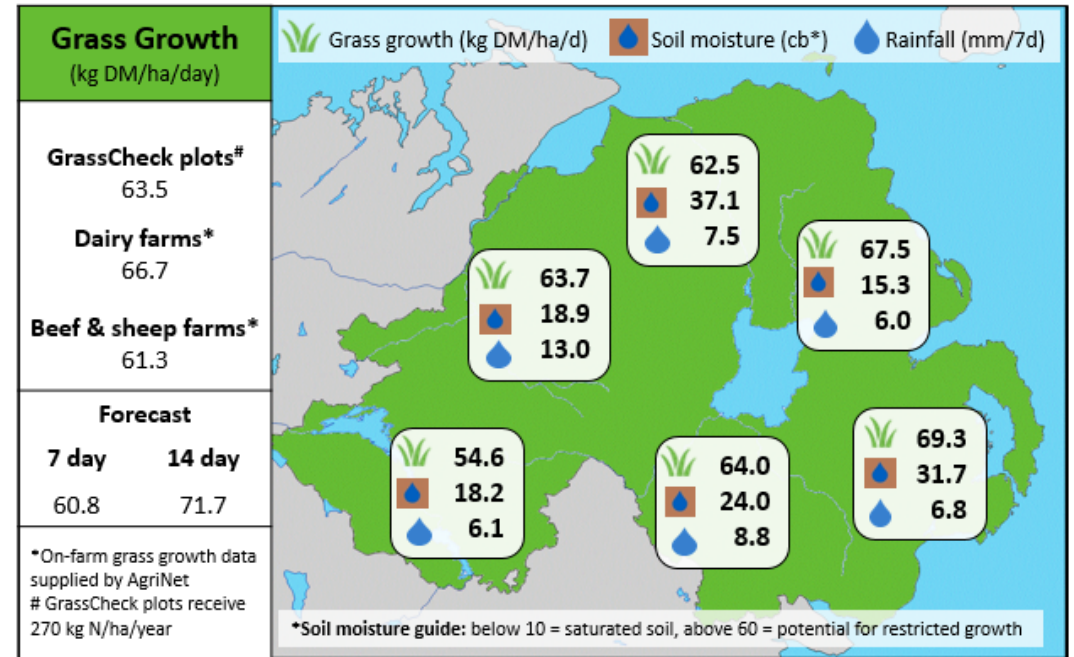


Week Beginning 6th June 2022



MANAGEMENT NOTES:

- Low overnight temperatures have contributed to grass growth reducing.
- The total amount of grass grown this season until the end of May 2022 is 4.25 T DM/ha, above the long term av. of 3.72 T DM/ha (114%).
- Variation in growth over short periods is challenging. Use the projected wedge tool on AgriNet to take the guesswork out of decision-making.
- Measuring weekly will provide you with a valuable few days grace to react and adjust before faced with a deficit or surplus in the grass wedge.
- If growth has fallen below demand, it is time to reduce stocking rates and increase supplementation. Do not allow AFC to fall below 2,000 kg DM/ha.



Value of Grass		Grass Quality	
Dairy – maintenance plus (M+) (kg/cow/day)*	17.3	DM (%)	19.5
Growing animals – daily live weight gain (kg/head/day)**	0.96	CP (% DM)	15.4
*M+ calculated assuming: 650kg cow, and 15 kg DMI. Maintenance=75 MJ/day, 5.3 MJ/kg milk **Beef daily gain assuming: 300 kg beef steer, and 6.6 kg DMI. Maintenance=35 MJ/day, 40 MJ/kg gain		WSC (% DM)	16.8
		ME (MJ/kg DM)	11.1