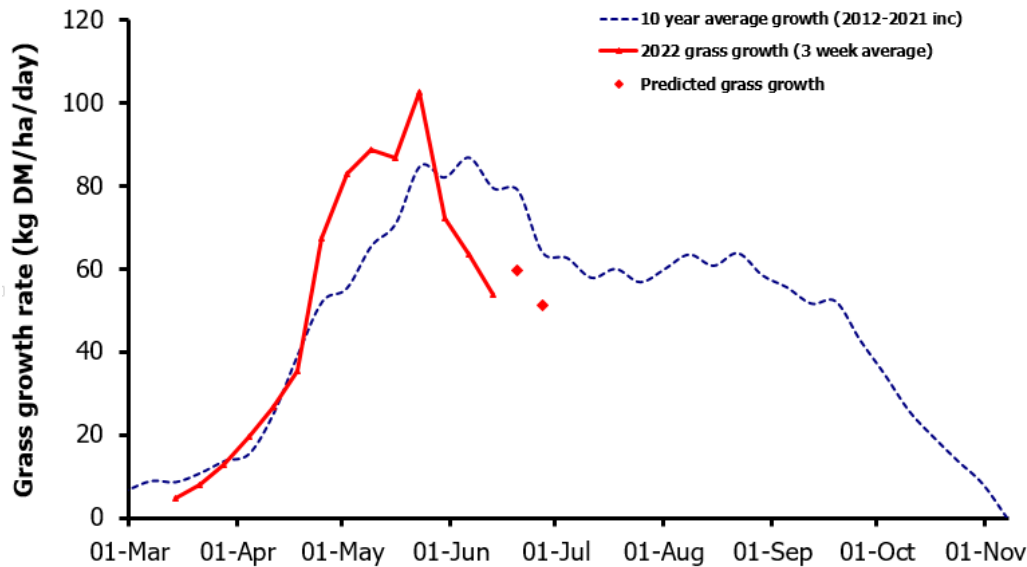
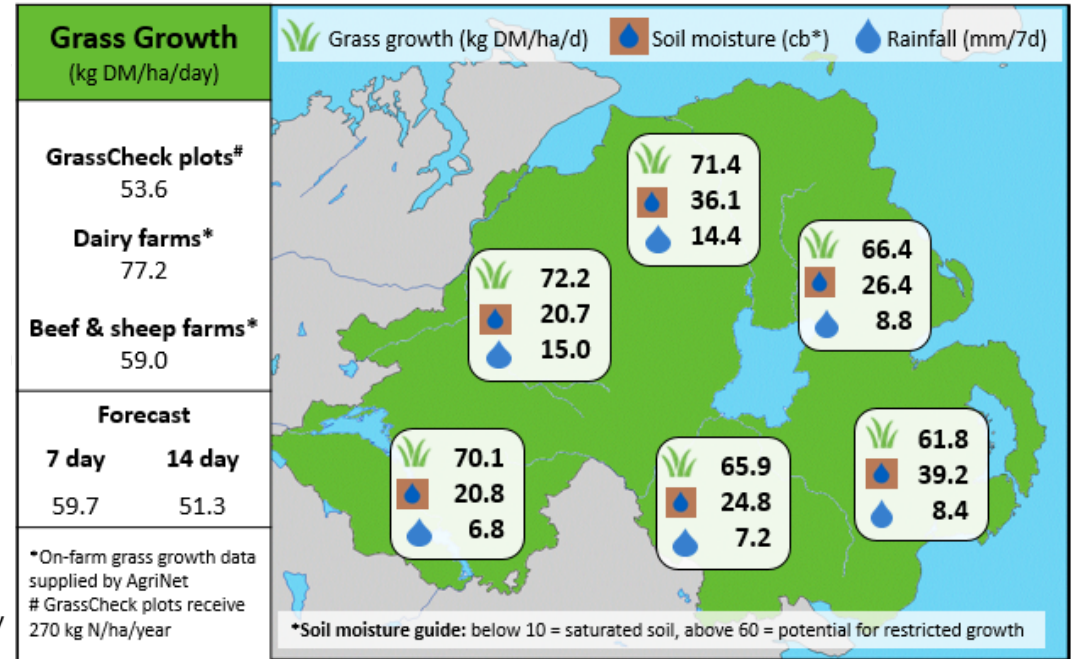


Week Beginning 13th June 2022



MANAGEMENT NOTES:

- Forecasting models are predicting growth to remain below the long term average over the next two weeks due to mainly dry conditions forecast.
- It is essential to measure grass growth regularly to enable grass budgeting for the next few weeks. Where necessary, aim to lengthen the grazing rotation by bringing in silage aftermath and/or supplementary feeding. Early intervention is important, as it takes longer for the farm to recover if average farm cover gets too low.
- The favourable conditions are enabling target residuals to be achieved, which will reset quality for the next rotation. Where possible, paddocks should be cleaned out with lower priority stock, such as dry cows.



Value of Grass		Grass Quality	
Dairy – maintenance plus (M+) (kg/cow/day)*	17.5	DM (%)	19.6
Growing animals – daily live weight gain (kg/head/day)**	0.97	CP (% DM)	16.3
*M+ calculated assuming: 650kg cow, and 15 kg DMI. Maintenance=75 MJ/day, 5.3 MJ/kg milk **Beef daily gain assuming: 300 kg beef steer, and 6.6 kg DMI. Maintenance=35 MJ/day, 40 MJ/kg gain		WSC (% DM)	16.4
		ME (MJ/kg DM)	11.2