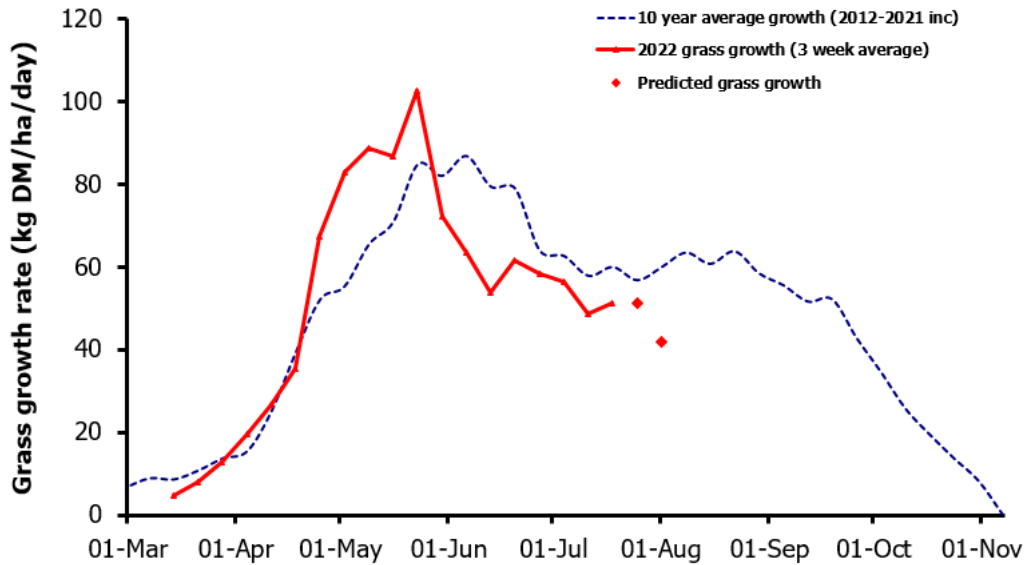
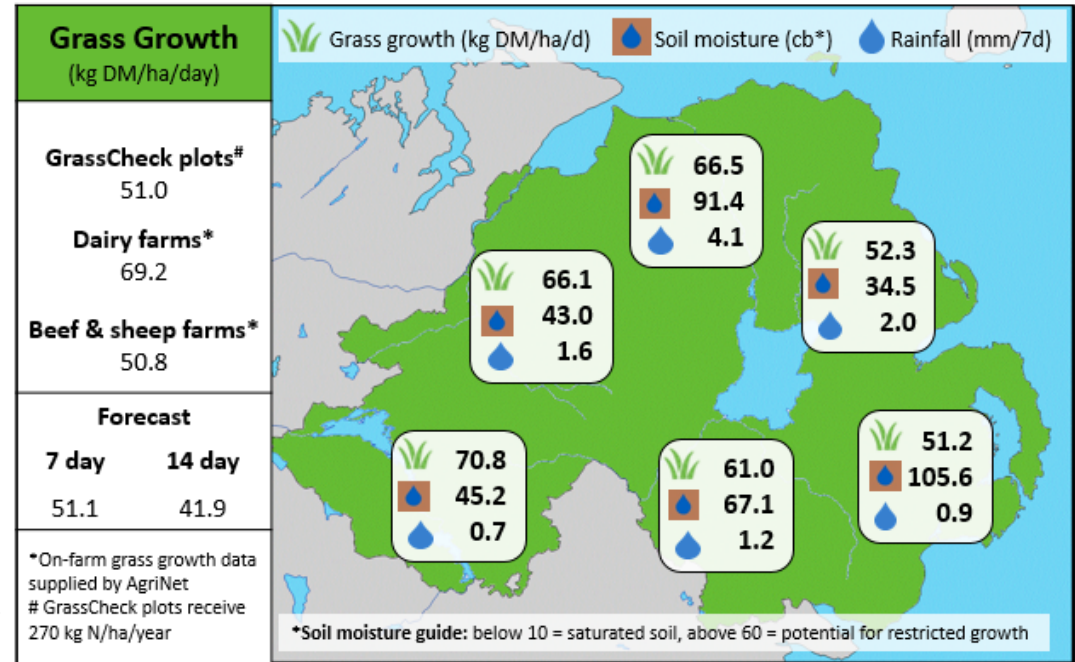


## Week Beginning 18<sup>th</sup> July 2022



### MANAGEMENT NOTES:

- Forecasting models are currently predicting growth to remain considerably below the long-term average over the next two weeks, due to mainly dry conditions. Eastern areas are particularly affected by soil moisture deficit.
- Continue to measure regularly and know your grazing demand, so you can make the correct decisions quickly. If growth is below demand, continue to hold a longer grazing rotation to avoid av. farm cover falling below 2100 Kg DM/ha.
- If buffer feeding is required, consider grazing ground which has been closed for second cut silage rather than starting to feed first cut silage.
- Where reseeds have been sown but haven't yet germinated, seeds should still be viable and should germinate when sufficient moisture is present.



Value of Grass		Grass Quality	
Dairy – maintenance plus (M+) (kg/cow/day)*	17.5	DM (%)	18.3
Growing animals – daily live weight gain (kg/head/day)**	0.97	CP (% DM)	15.5
*M+ calculated assuming: 650kg cow, and 15 kg DMI. Maintenance=75 MJ/day, 5.3 MJ/kg milk **Beef daily gain assuming: 300 kg beef steer, and 6.6 kg DMI. Maintenance=35 MJ/day, 40 MJ/kg gain		WSC (% DM)	14.8
		ME (MJ/kg DM)	11.2