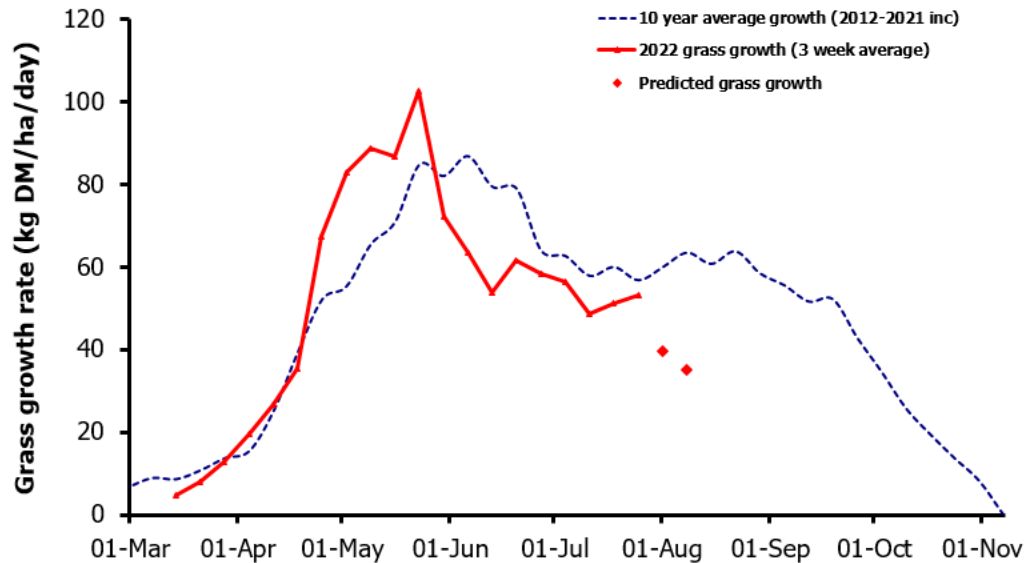
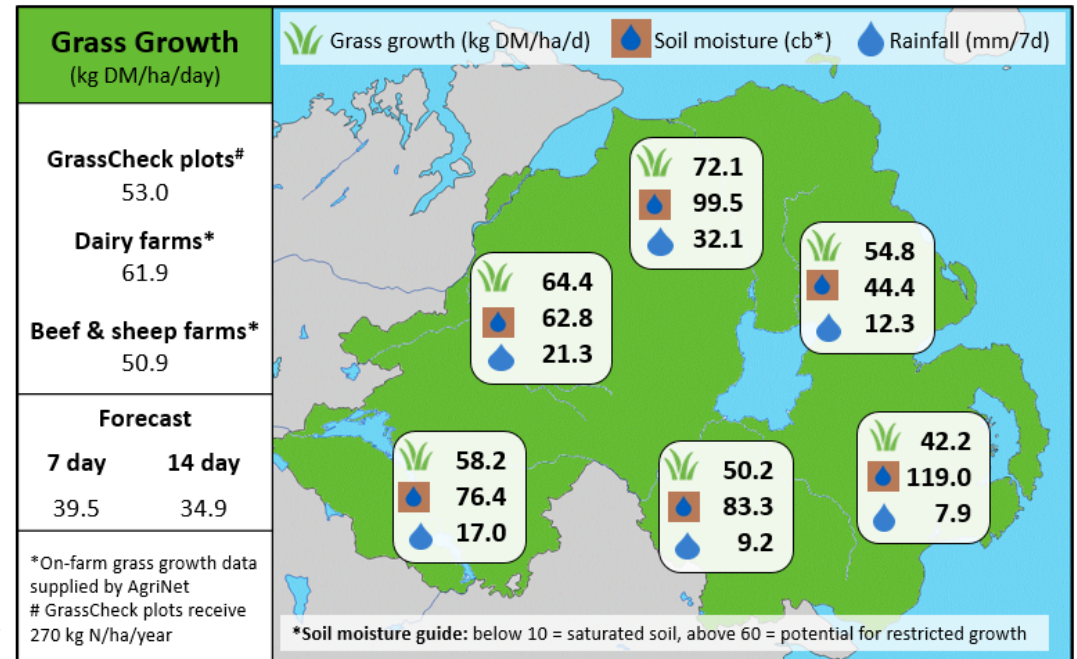


Week Beginning 25th July 2022



MANAGEMENT NOTES:

- Forecasting models are currently predicting growth to remain considerably below the long-term average over the next two weeks, however these forecasts are being largely driven by predicted soil moisture deficit in Eastern areas. Therefore, growth rates in the West could continue to be higher than predicted.
- Continue to measure regularly and know your grazing demand. Provide sufficient supplementation to avoid av. farm cover falling below 2100 Kg DM/ha.
- Take advantage of any rain in the forecast to spread nitrogen or watery slurry on paddocks which may not have received any nitrogen for several weeks.
- Second cut silage should be harvested during this settled spell of weather, which will also provide additional grazing area for building up autumn covers.



Value of Grass		Grass Quality	
Dairy – maintenance plus (M+) (kg/cow/day)*	16.7	DM (%)	17.7
Growing animals – daily live weight gain (kg/head/day)**	0.92	CP (% DM)	17.4
*M+ calculated assuming: 650kg cow, and 15 kg DMI. Maintenance=75 MJ/day, 5.3 MJ/kg milk **Beef daily gain assuming: 300 kg beef steer, and 6.6 kg DMI. Maintenance=35 MJ/day, 40 MJ/kg gain		WSC (% DM)	11.9
		ME (MJ/kg DM)	10.9