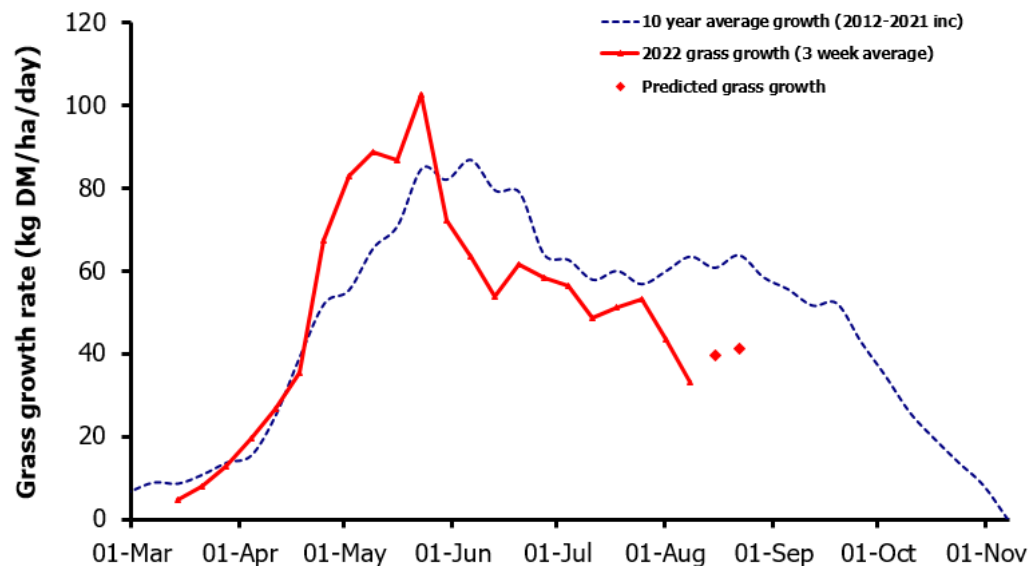
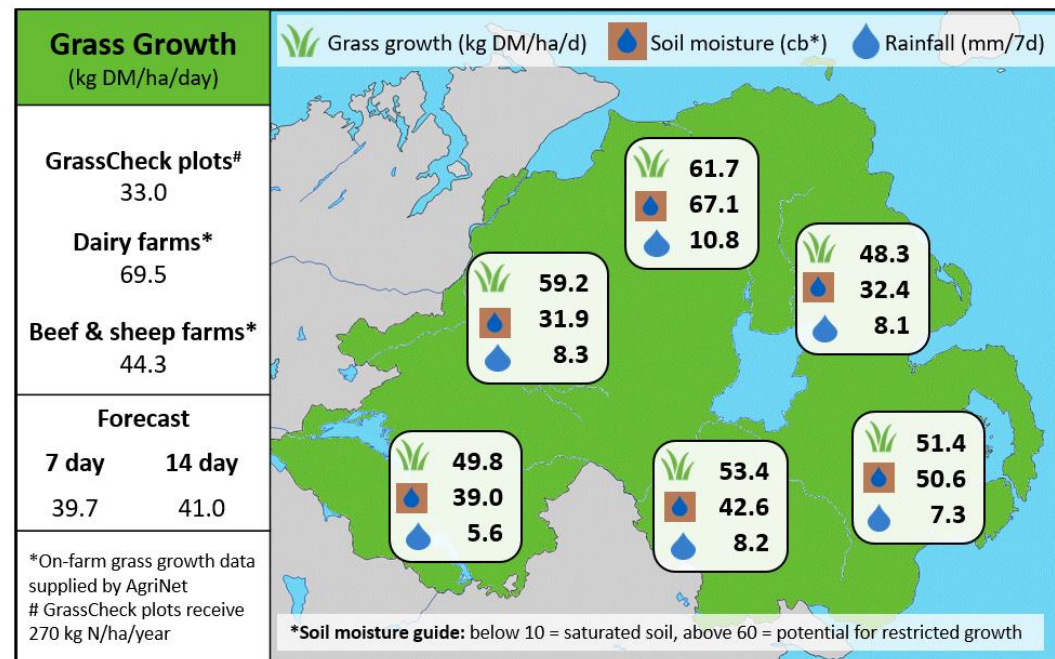


Week Beginning 8th August 2022



MANAGEMENT NOTES:

- Forecasting models are currently predicting growth to remain considerably below the long-term average over the next two weeks, albeit with a slight improvement.
- The focus now, where practicable, should be on building covers for the latter part of the grazing season. Introduce silage aftermath, if available, to increase the rotation length, which should be approximately 30 days by the end of August.
- Grazing out paddocks fully is no longer critical as grass has now passed the heading out phase. Leaving a slightly higher residual (5-6cm) will boost regrowth.
- Spring-calved suckler cows should have passed peak lactation, therefore it is increasingly important to ensure calves have access to high quality grass, for example, by creep grazing calves ahead of cows. This also helps to reduce the maternal bond in preparation for weaning.



Value of Grass		Grass Quality	
Dairy – maintenance plus (M+) (kg/cow/day)*	14.1	DM (%)	19.3
Growing animals – daily live weight gain (kg/head/day)**	0.96	CP (% DM)	16.5
*M+ calculated assuming: 650kg cow, and 13.5 kg DMI. Maintenance=75 MJ/day, 5.3 MJ/kg milk **Beef daily gain assuming: 300 kg beef steer, and 6.6 kg DMI. Maintenance=35 MJ/day, 40 MJ/kg gain		WSC (% DM)	12.7
		ME (MJ/kg DM)	11.1