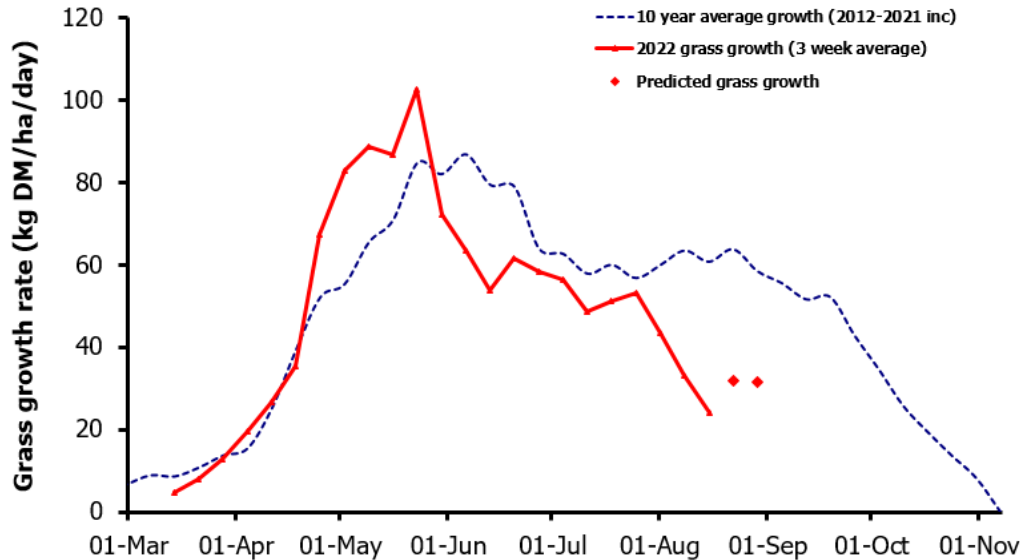
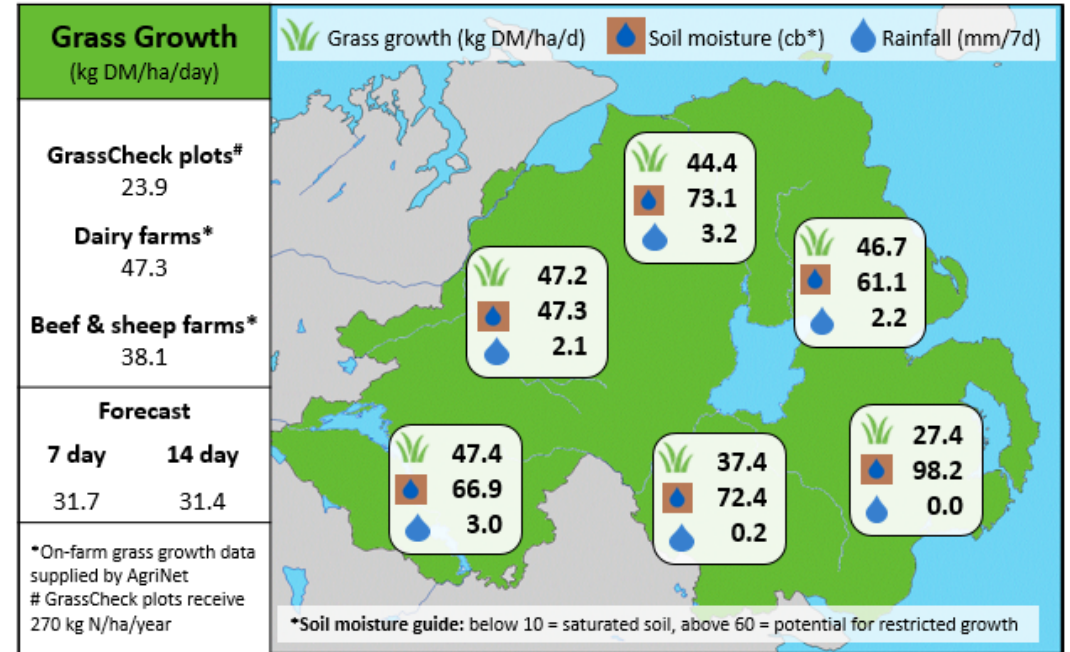


Week Beginning 15th August 2022



MANAGEMENT NOTES:

- As expected with the recent heatwave grass growth is significantly below the LT av., with grass growth set to remain so for the next 2 weeks at least.
- There is a split across the province with grass growth on individual GC farms ranging from 11 in Co. Down to 74 in Co. Fermanagh this week.
- Whilst there is rain in the forecast it could be hit and miss with location.
- August is the time to start building covers and increasing rotation length ahead of the autumn period. This will be difficult for some with av. farm covers already very low. Always try to maintain AFC above 2,000 kg DM/ha.
- Continue to measure and budget grass along with supplement if required.
- Stop applying N if grass growth is <35kg DM/ha or the grass base is brown.



Value of Grass		Grass Quality	
Dairy – maintenance plus (M+) (kg/cow/day)*	14.1	DM (%)	19.5
Growing animals – daily live weight gain (kg/head/day)**	0.96	CP (% DM)	15.8
*M+ calculated assuming: 650kg cow, and 13.5 kg DMI. Maintenance=75 MJ/day, 5.3 MJ/kg milk **Beef daily gain assuming: 300 kg beef steer, and 6.6 kg DMI. Maintenance=35 MJ/day, 40 MJ/kg gain		WSC (% DM)	13.2
		ME (MJ/kg DM)	11.1