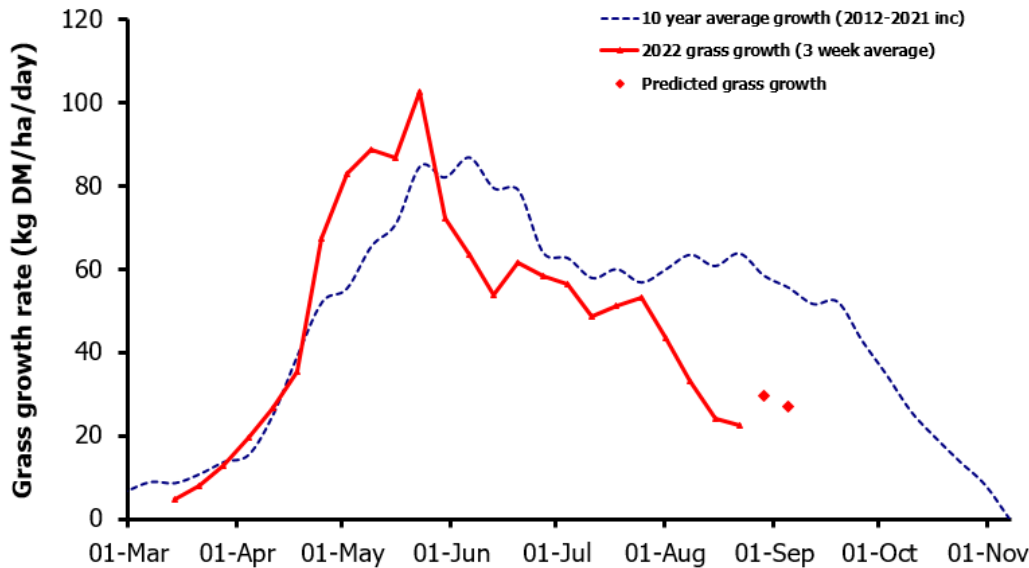
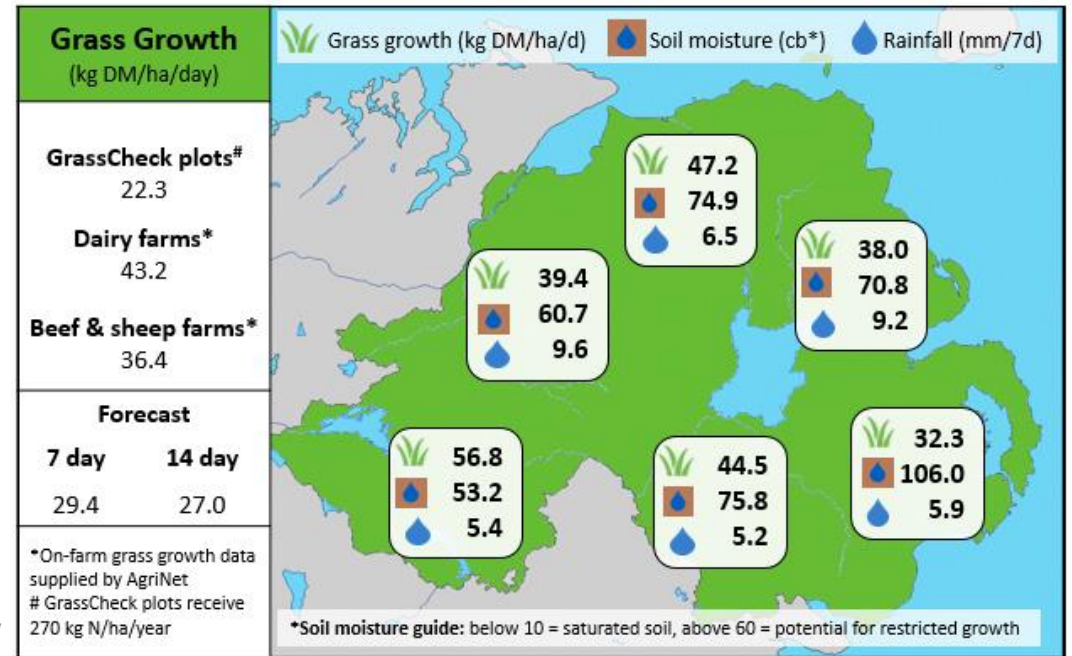


Week Beginning 22nd August 2022



MANAGEMENT NOTES:

- Growth rates are predicted to improve over the next two weeks, although recovery will be slower in areas which have been most affected by the dry spell.
- Continue to measure grass at least weekly. Growth needs to be higher than demand to build grass for an extended grazing season this autumn.
- Paddocks which are stemmy should be pre-mowed or cleaned out with lower priority stock such as dry cows, to improve sward quality. Take advantage of any rain in the forecast to catch up on fertiliser or slurry applications.
- Autumn is a good time for soil remediation work, take the opportunity to assess any paddocks which may be showing signs of compaction to determine next steps.



	Value of Grass	Grass Quality	
Dairy – maintenance plus (M+) (kg/cow/day)*	14.9	DM (%)	18.4
Growing animals – daily live weight gain (kg/head/day)**	1.01	CP (% DM)	18.9
*M+ calculated assuming: 650kg cow, and 13.5 kg DMI. Maintenance=75 MJ/day, 5.3 MJ/kg milk **Beef daily gain assuming: 300 kg beef steer, and 6.6 kg DMI. Maintenance=35 MJ/day, 40 MJ/kg gain		WSC (% DM)	11.4
		ME (MJ/kg DM)	11.4