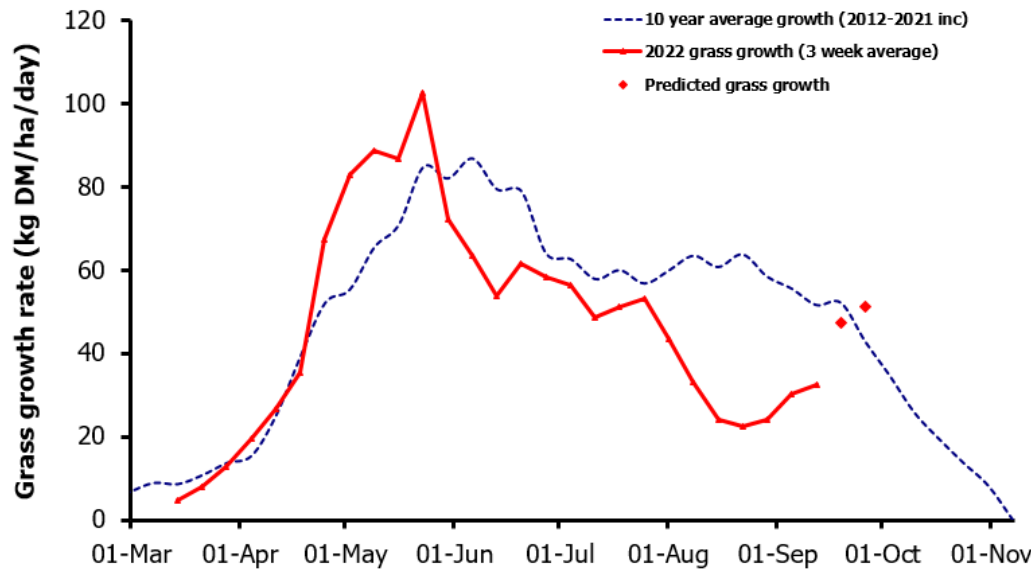
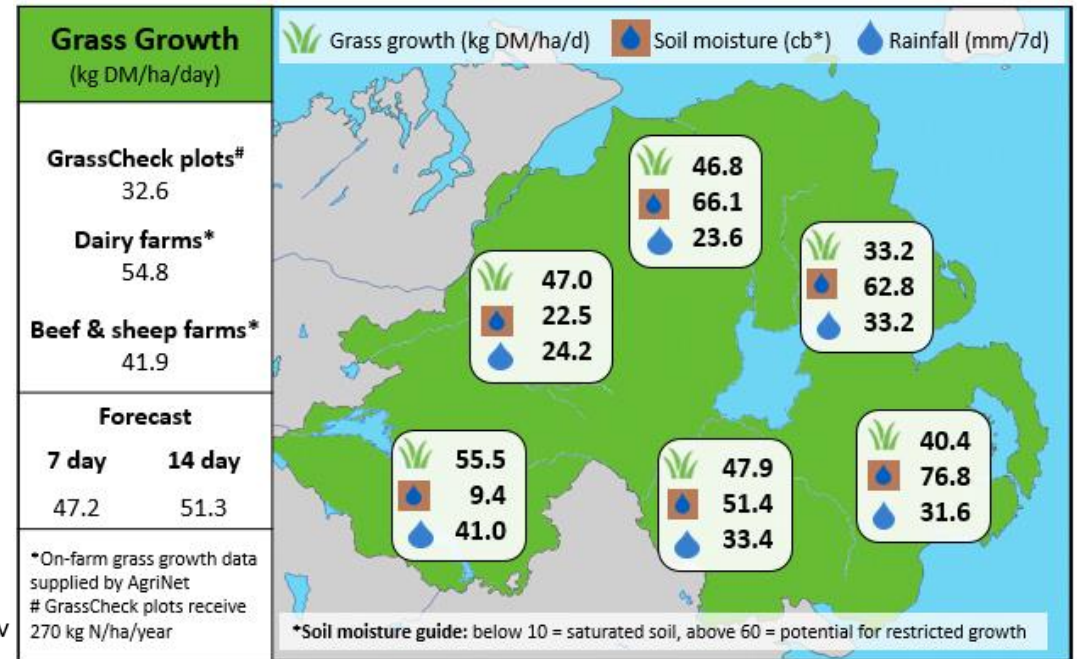


Week Beginning 12th September 2022



MANAGEMENT NOTES:

- Grass growth is forecast to continue to climb back up to the 10 year av. over the next fortnight with settled and mild weather conditions forecast.
- Along with a return in grass growth, grass quality has also risen this week.
- Each extra day at grass in the Autumn is valuable, however these days are only possible if the grass is grown now. Measure and budget grass weekly to try and build up the av. farm cover (target of 2,700 Kg DM/ha this week).
- The settled weather should help to graze swards out to target residuals.
- Aim for a rotation length of 30 days, targeting 35 days by the end of Sept.
- Chemical nitrogen and phosphorus fertiliser must not be applied to grassland from midnight on the 15th of September until 31st January.



Value of Grass		Grass Quality	
Dairy – maintenance plus (M+) (kg/cow/day)*	11.9	DM (%)	16.8
Growing animals – daily live weight gain (kg/head/day)**	1.02	CP (% DM)	20.1
*M+ calculated assuming: 650kg cow, and 12.0 kg DMI. Maintenance=75 MJ/day, 5.3 MJ/kg milk **Beef daily gain assuming: 300 kg beef steer, and 6.6 kg DMI. Maintenance=35 MJ/day, 40 MJ/kg gain		WSC (% DM)	11.4
		ME (MJ/kg DM)	11.5