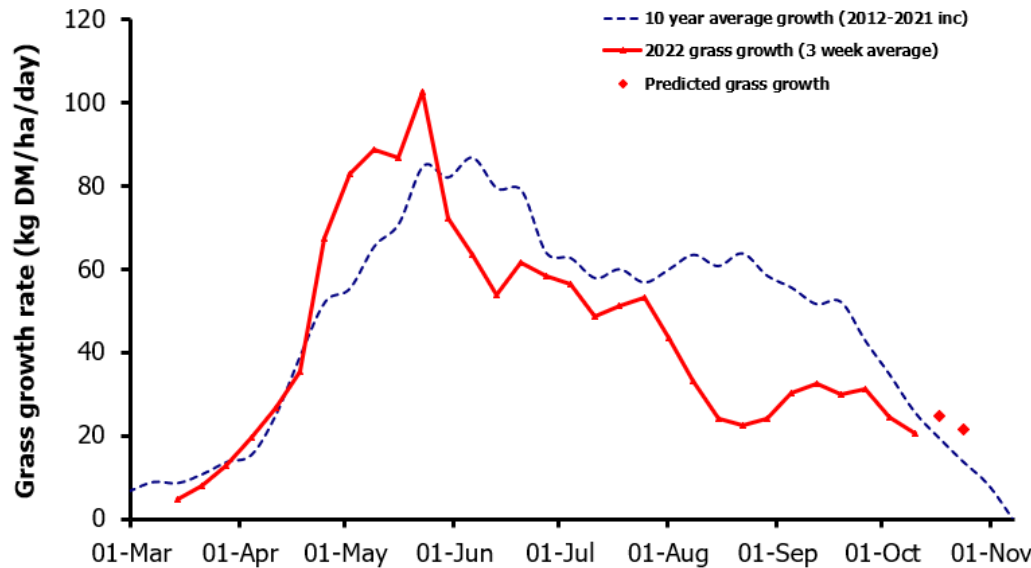
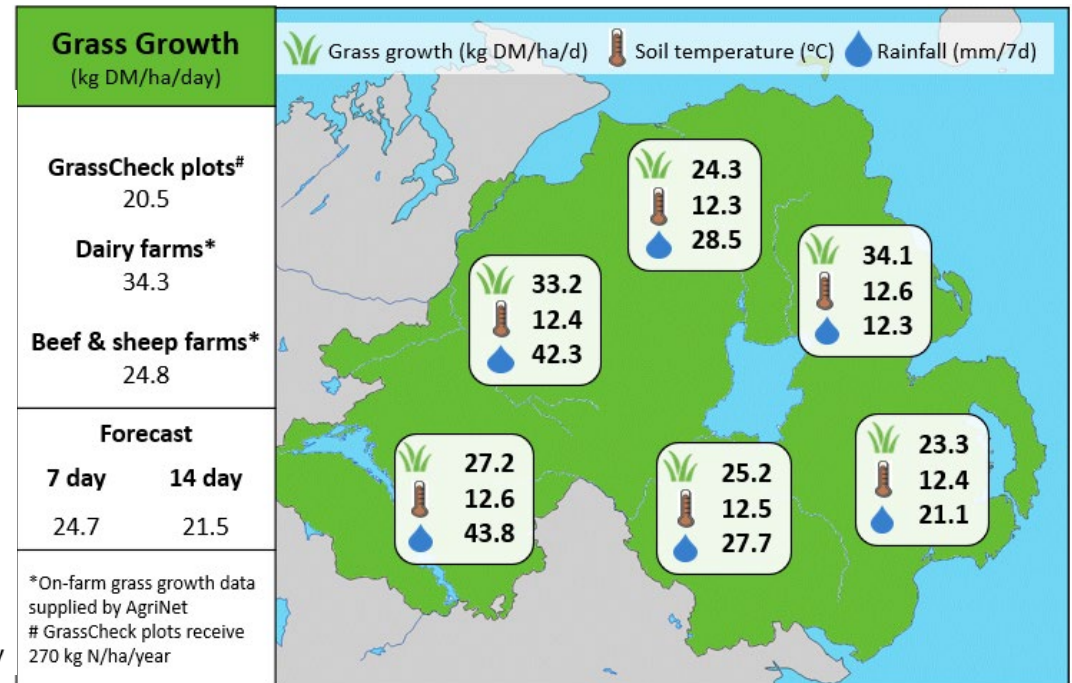


Week Beginning 10th October 2022



MANAGEMENT NOTES:

- The final grazing rotation should now have commenced on all farms in line with an autumn rotation plan with a targeted rotation length of 40 days.
- Good grazing residuals in the final rotation will improve grass quality in the spring. Therefore, use strip grazing, spur roadways, multiple entry and exit points, graze heavier covers on drier days and keep silage out of the diet.
- Pick the order of paddocks to close carefully, with spring grazing in mind.
- Avoid the temptation to re-graze paddocks grazed from the start of October. 80% of grass grazed in early spring will be grown in October.
- Revisit soil sample analysis and consider applying lime where appropriate and ground conditions allow, in order to maximise fertiliser use in 2023.



Value of Grass		Grass Quality	
Dairy – maintenance plus (M+) (kg/cow/day)*	8.2	DM (%)	15.2
Growing animals – daily live weight gain (kg/head/day)**	0.99	CP (% DM)	21.6
*M+ calculated assuming: 650kg cow, and 10.5 kg DMI. Maintenance=75 MJ/day, 5.3 MJ/kg milk **Beef daily gain assuming: 300 kg beef steer, and 6.6 kg DMI. Maintenance=35 MJ/day, 40 MJ/kg gain		WSC (% DM)	10.0
		ME (MJ/kg DM)	11.3