

Enrolments at UK Higher Education Institutions:

Northern Ireland analysis – 2016/17

This statistical bulletin has been produced by the Department for the Economy (DfE) and provides information on the number of Northern Ireland (NI) students enrolled at UK Higher Education Institutions (HEIs) and the number of students enrolled at NI HEIs.

Date of Publication:
15 February 2018

Frequency of Publication:
Annual

Issued by:
Statistics and Research Branch
Tertiary Education
Department for the Economy
Adelaide House
39-49 Adelaide Street
Belfast
BT2 8FD

Customer Enquiries:
Statistics and Research Branch
Tertiary Education
(028) 90257897

Statistician:
Andy Bannon

Email:
analyticalservices@economy-ni.gov.uk

Internet:
<https://www.economy-ni.gov.uk/topics/statistics-and-economic-research/higher-education-statistics>

- Over the past decade, the number of NI students enrolled at UK HEIs increased initially, from 62,300 in 2007/08 to a peak of 65,590 in 2011/12, before declining to 63,070 in 2016/17 (Tables 1a and 1b).
- Of the 63,070 NI students enrolled at UK HEIs in 2016/17, 73.1% were enrolled at NI HEIs (including 5.7% studying locally at the Open University) and 26.9% at HEIs in GB (Table 1a).
- In 2016/17, 49.0% of NI domiciled students at UK HEIs were studying a Science, Technology, Engineering or Mathematics (Broad STEM) related subject and 26.5% a Narrow STEM related subject (Table 7a).
- Despite a 1.2% (675) decrease between 2015/16 (55,245) and 2016/17 (54,570), student enrolments at NI HEIs have increased by a net 4.6% (2,415) over the past decade (from 52,155 in 2007/08) (Tables 8f and 8g).
- Between 2015/16 and 2016/17, the number of first year undergraduates enrolling at NI HEIs decreased by 2.6%, from 17,250 to 16,800; a 7.1% increase in full-time enrolments (from 9,855 to 10,555) was offset by a 15.6% decrease in part-time enrolments (from 7,395 to 6,245) (Table 9b).
- Of the 54,570 students enrolled at NI HEIs in 2016/17, 84.5% were from NI, 3.8% from the Republic of Ireland, 5.8% from GB, 0.7% from other EU countries and 5.2% from non-EU countries (Table 8a).

READER INFORMATION

Purpose	Monitor and report on 1) NI domiciled Enrolments in Higher Education Institutions in the United Kingdom, and 2) All Enrolments at NI Higher Education Institutions.
Authors	Andy Bannon, Kerry McColgan, Kimberley Gillespie, Michael MacNeill.
Publication Date	Thursday 15th February 2018
Reporting Period	Academic Years 2007/08 to 2016/17
Publication Issue	21
Statistical Quality	Information detailed in this release has been quality assured by the Higher Education Statistics Authority (HESA) prior to release.
Target audience	Department for the Economy (DfE), Directors of HE institutions in Northern Ireland, Board members of HE institutions, educational professionals, academics, media and members of the public interested in the HE sector.
Further copies from	analyticalservices@economy-ni.gov.uk
Internet address	https://www.economy-ni.gov.uk/topics/statistics-and-economic-research/higher-education-statistics
Price	Free
Copyright	This publication is Crown copyright and may be reproduced free of charge in any format or medium. Any material used must be acknowledged, and the title of the publication specified.
Feedback	As we want to engage with users of our statistics, we invite you to feedback your comments on this publication to: Michael MacNeill – Michael.MacNeill@economy-ni.gov.uk (Tel: 028 90 2 57897) Kerry McColgan – Kerry.McColgan@economy-ni.gov.uk (Tel: 028 90 2 57753) Kimberley Gillespie – Kimberley.Gillespie@economy-ni.gov.uk (Tel: 028 90 2 26765)

TABLE OF CONTENTS

Reader Information	Page 2
Table of Contents	Page 3
List of Figures	Page 4
Statistics and Research Branch	Page 5
Key Statistics	Page 6
Introduction	Page 8
Structure of Report	Page 11
Section 1: Northern Ireland domiciled students enrolled at UK Higher Education Institutions	Page 12
Change over the last 10 years	Page 12
Breakdown of enrolments	Page 13
Location of study	Page 14
Multiple Deprivation Measure quintiles	Page 16
Subject of study	Page 16
Section 2: Enrolments at Northern Ireland Higher Education Institutions	Page 18
Change over the last 10 years	Page 18
Breakdown of enrolments	Page 19
Country of domicile	Page 20
Subject of study	Page 22
Institutional breakdown	Page 23
UK comparison	Page 25
Notes and definitions	Page 27
List of tables	Page 33
Annex A: Detailed statistical tables	Page 38

LIST OF FIGURES

Figure 1 – NI domiciled students enrolled at UK HEIs – 2007/08 to 2016/17.....	Page 12
Figure 2 – NI domiciled students enrolled at UK HEIs by age group, mode and level of study – 2016/17.....	Page 14
Figure 3 – NI domiciled students enrolled at UK HEIs by mode of study and multiple deprivation measure quintiles – 2016/17.....	Page 16
Figure 4 – NI domiciled students enrolled at UK HEIs by gender and subject area – 2016/17.....	Page 17
Figure 5 – Enrolments at NI HEIs – 2007/08 to 2016/17.....	Page 18
Figure 6 – Enrolments at NI HEIs by age group, mode and level of study – 2016/17.....	Page 20
Figure 7 – Enrolments at NI HEIs by domicile and level of study – 2016/17.....	Page 22
Figure 8 – Enrolments at NI HEIs by gender and subject area – 2016/17.....	Page 23
Figure 9 – Enrolments at NI HEIs by institution and level of study – 2016/17.....	Page 25
Figure 10 – Percentage change in enrolments at UK HEIs by level of study and location of institution – 2015/16 to 2016/17.....	Page 26
Map 1 – Northern Ireland students enrolled at GB Higher Education Institutions – 2016/17.....	Page 15
Map 2 – HE Enrolments at campuses in NI by country of domicile – 2016/17.....	Page 21

Statistics and Research Branch (Tertiary Education) is responsible for the collection, quality assurance, analysis and publication of timely and accurate information derived from a wide range of statistical information returns supplied by the Higher Education Institutions (HEIs) and Further Education (FE) colleges across Northern Ireland (NI) and the Higher Education Statistics Agency (HESA), focused on NI HEIs and NI domiciled students in attendance at any UK HEI. Statistical information is collected routinely from a variety of electronic individual level administrative systems.

The Head of Branch is the Principal Statistician, Brian French. The Branch aims to present information in a meaningful way and provide advice on its uses to customers in the Economy Committee, FE colleges, universities, Professional Advisory Groups, policy branches within the DfE, other educational organisations, academia, private sector organisations, charity/voluntary organisations, as well as the general public.

The statistical information collected is used to contribute to major exercises such as reporting on the performance of the Higher Education (HE) and FE sectors, other comparative performance exercises, target setting and monitoring, departmental research projects, development of service frameworks, as well as policy formulation and evaluation. In addition, the information is used in response to a significantly high volume of Assembly questions and ad hoc queries each year.

Information is disseminated through a number of key statistical publications, including: HE enrolments; HE qualifications; Destinations of leavers from Higher Education (DLHE); FE activity; and Essential Skills enrolments and outcomes.

A detailed list of these publications is available from:

Website: <https://www.economy-ni.gov.uk/topics/statistics-and-economic-research/higher-and-further-education-and-training-statistics>

KEY STATISTICS FOR NORTHERN IRELAND DOMICILED ENROLMENTS AT UK HEIs

Over the past decade, NI student enrolments at UK HEIs increased initially, before declining again...	Over the past decade, the number of NI students enrolled at UK HEIs increased initially, from 62,300 in 2007/08 to a peak of 65,590 in 2011/12, before declining again to 63,070 in 2016/17; this included a 0.8% (535) decrease between 2015/16 (63,600) and 2016/17 (63,070).
Most NI students study full-time...	In 2016/17, 75.0% of enrolments were full-time and 25.0% were part-time. In comparison with 2015/16, full-time enrolments have increased by 1.3% (from 46,720 to 47,320) and part-time enrolments have decreased by 6.7% (from 16,885 to 15,745).
Most NI students study in NI...	Of the 63,070 NI students enrolled at UK HEIs in 2016/17, 73.1% were enrolled at NI HEIs (including 5.7% studying locally at the Open University) and 26.9% at HEIs in GB.
...however, outside of Northern Ireland, the North West of England is the most popular region for NI students...	The most popular regions for NI students who studied in GB were the North West of England and Scotland, with 4,920 and 4,180 NI students enrolled at HEIs in each region respectively.
More NI female students are enrolling...	Females accounted for 56.8% of NI students enrolled at UK HEIs in 2016/17. A higher proportion of males (76.7%) were studying full-time than females (73.8%).
More NI students are enrolling on full-time undergraduate courses at UK HEIs...	The number of NI students enrolled on full-time first year undergraduate courses at UK HEIs increased by 2.8%, from 13,280 in 2015/16 to 14,035 in 2016/17.
A quarter of NI students are enrolled on Narrow STEM courses...	In 2016/17, 26.5% of NI students at UK HEIs were studying a Narrow STEM related subject and 49.0% a Broad STEM related subject.

KEY STATISTICS FOR ENROLMENTS AT NORTHERN IRELAND HEIs

Student enrolments at NI HEIs have increased by a net 4.6% over the past decade...	Despite a 1.2% (675) decrease between 2015/16 (55,245) and 2016/17 (54,570), student enrolments at NI HEIs have increased by a net 4.6% (2,415) over the past decade (from 52,155 in 2007/08).
Most students enrolled at NI HEIs were studying full-time...	In 2016/17, over two thirds (69.3%) of enrolments were full-time and 30.7% were part-time. In comparison with 2015/16, full-time enrolments have increased by 0.7% (from 37,545 to 37,825) and part time enrolments have decreased by 5.4% (from 17,700 to 16,745).
Most students in NI HEIs are from NI...	Of the 54,570 students enrolled at NI HEIs in 2016/17, 84.5% were from NI, 3.8% from the Republic of Ireland (RoI), 5.8% from Great Britain (GB), 0.7% from other EU countries and 5.2% from non-EU countries.
...however, we have students from a wide range of countries...	In 2016/17, students from over 100 different countries throughout the world were enrolled at NI HEIs. The non-EU countries with the highest number of students at NI HEIs were China (875) and Malaysia (400).
More females are enrolling in NI HEIs...	Females accounted for 56.9% of students enrolled at NI HEIs in 2016/17. A higher proportion of males (72.9%) were studying full-time than females (66.6%).
More students are enrolling on full-time undergraduate courses at NI HEIs...	Between 2015/16 and 2016/17, the number of first year undergraduates enrolling at NI HEIs decreased by 2.6%, from 17,250 to 16,800; a 7.1% increase in full-time enrolments (from 9,855 to 10,555) was offset by a 15.6% decrease in part-time enrolments (from 7,395 to 6,245).
Over a quarter of students at NI HEIs are enrolled on Narrow STEM courses...	In 2016/17, 25.5% of students at NI HEIs were studying a Narrow STEM related subject and 48.9% a Broad STEM related subject.

Coverage

This statistical bulletin has been produced by the Department for the Economy (DfE) and presents information on students enrolled at Higher Education Institutions (HEIs) in the UK in the 2016/17 academic year. The statistics presented in this bulletin cover a range of topics, including changes over the last ten years, breakdown of the most recent enrolments, subject of study and where Northern Ireland (NI) students go to study.

National Statistics

The United Kingdom Statistics Authority (the Authority) has designated these statistics as National Statistics, in accordance with the Statistics and Registration Service Act 2007 and signifying compliance with the [Code of Practice](#) for Official Statistics.

National Statistics status means that Official Statistics meet the highest standards of trustworthiness, quality and public value.

All Official Statistics should comply with all aspects of the Code of Practice for Official Statistics. They are awarded National Statistics status following an assessment by the Authority's regulatory arm. The Authority considers whether the statistics meet the highest standards of Code compliance, including the value they add to public decisions and debate. Designation can be broadly interpreted to mean that the statistics: meet identified user needs; are well explained and readily accessible; are produced according to sound methods; and are managed impartially and objectively in the public interest.

Once statistics have been designated as National Statistics, it is a statutory requirement that the Code of Practice shall continue to be observed. It is DfE's responsibility to maintain compliance with the standards expected of National Statistics. If we become concerned about whether these statistics are still meeting the appropriate standards, we will discuss any concerns with the Authority promptly. National Statistics status can be removed at any point when the highest standards are not maintained, and reinstated when standards are restored.

Policy and Operational Context

The Department for the Economy is responsible for formulating policy and administering funding to support education, research and related activities in the Northern Ireland higher education sector. The work of the Department is shaped by the draft Programme for Government (2016-2020) that sets the strategic direction of travel for the work of the Executive, expressed in terms of wellbeing-focused outcomes. The document identifies innovation, research and development, and skills and employability as the key drivers of achieving a strong, competitive, regionally balanced economy. Higher education has a pivotal role in supporting this aspiration, especially with regard to increasing the skills levels of the Northern Ireland workforce and increasing the proportion of local graduates from local institutions in professional and management occupations, or indeed further study.

This bulletin forms part of the evidence base that helps to develop strategies and policies, as well as evaluating the effectiveness of existing policies and strategies, that will support the aspirations contained within the draft Programme for Government.

Data Collection

The information presented in this statistical bulletin is based on data supplied by the Higher Education Statistics Agency (HESA). HESA is the official agency for the collection of information on publicly funded HEIs in the UK. It was set up in 1993 following the White Paper *Higher Education: a new framework*, which called for more coherence in HE statistics. In this context, HEIs include all publicly-funded universities. The HESA data presented in this bulletin relate to students at HEIs in the UK and therefore do not include HE enrolments at FE colleges in NI or GB, or at institutions in the Republic of Ireland (RoI).

Rounding Strategy

To prevent the identification of individuals, figures throughout the report are rounded to the nearest 5, with 0, 1, and 2 rounded to 0. Due to rounding, the sum of numbers in each row or column may not match the total shown. Percentages are based on unrounded figures. Percentages have also been rounded to one decimal place. More information on the rounding strategy can be found in the [notes and definitions](#) section.

Data Quality

All information presented in this bulletin has been validated and quality assured by HEIs prior to publication. HEIs are given a set period of time to submit the information to HESA. Following submission, both HESA and DfE perform a series of validation checks to ensure that information is consistent both within and across returns. Trend analyses are used to monitor annual variations and emerging trends. Queries arising from validation checks are presented to HEIs for clarification and, if required, returns may be amended and/or re-submitted. Finally, prior to publication, the data are presented to HEIs for a final sign-off. More detail is available via the link: [Quality of Higher Education Statistics](#).

Who will be interested in this bulletin?

The information presented in this statistical bulletin will be of interest to a wide variety of people. For example, the statistics within and those derived from this bulletin are currently used by: DfE policy officials in their role of assisting and advising the Minister for the Economy to discharge his or her duties; by the NI Assembly and its Committee for the Economy to scrutinise the HE sector; by other government departments such as DoF as a key indicator in the education domain of the NI Multiple Deprivation Measure (MDM); by prospective students to inform their choices around HE; by local businesses to quantify the supply of graduates in their business area; and by researchers and academics to try and understand the underlying trends in HE. Further details about the uses made of HE statistics can be found in the [notes and definitions](#) section.

Main Uses of HE statistics

The main uses of these statistics are to monitor HE enrolments and the characteristics of students enrolling both from NI and to NI HEIs. This helps in assessing HEI performance, corporate monitoring, informing and monitoring related policy, and responding to parliamentary/assembly questions and ad hoc queries from the public.

DfE is responsible for the policy, strategic development and financing of the statutory HE sector. Analysis of data trends against key strategic priorities remains a crucial component of data development within DfE.

HE Activity Elsewhere

Summary figures for the four UK administrations were published by HESA in their Statistical First Release on 11th January 2018.

This statistical first release can be viewed at the following page -

<https://www.hesa.ac.uk/news/11-01-2018/sfr247-higher-education-student-statistics>

More in depth reports for England, Scotland and Wales can be downloaded from the following pages:

England - <http://www.bis.gov.uk/policies/higher-education/research-analysis>

Scotland - <http://www.scotland.gov.uk/Topics/Statistics/Browse/Lifelong-learning>

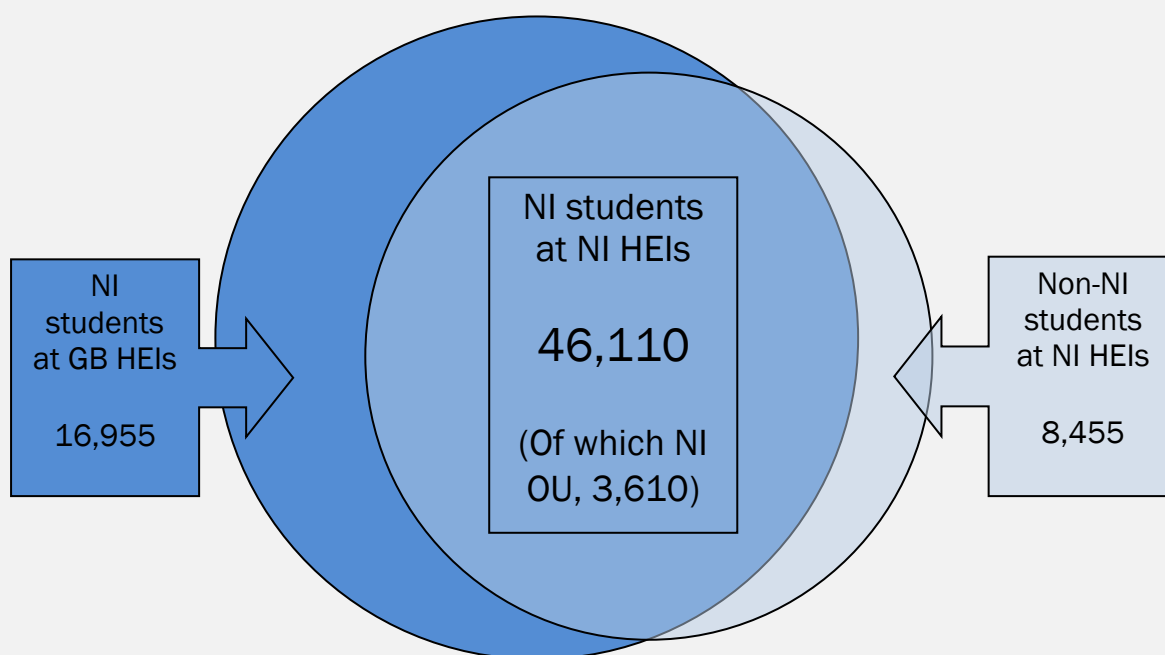
Wales - <http://wales.gov.uk/topics/statistics/theme/post16ed/higher-educa>



STRUCTURE OF REPORT

The bulletin is divided into two sections. Section 1 focuses on NI domiciled students enrolled at HEIs in NI, England, Scotland or Wales. Section 2 concentrates on all students enrolled at NI HEIs. This division into two sections reflects the two distinct policy and operational responsibilities of the Minister and the Department. Furthermore, it is clear from customer feedback, the nature of questions on HE asked in the NI Assembly, and coverage of HE issues in the local media, that these two aspects are of key interest to readers.

It is worth noting that there is a large overlap between Section 1 and Section 2, namely NI students enrolled at NI HEIs are included in both sections. See the diagram below for details:

Diagram summarising the structure of the bulletin: Enrolments 2016/17



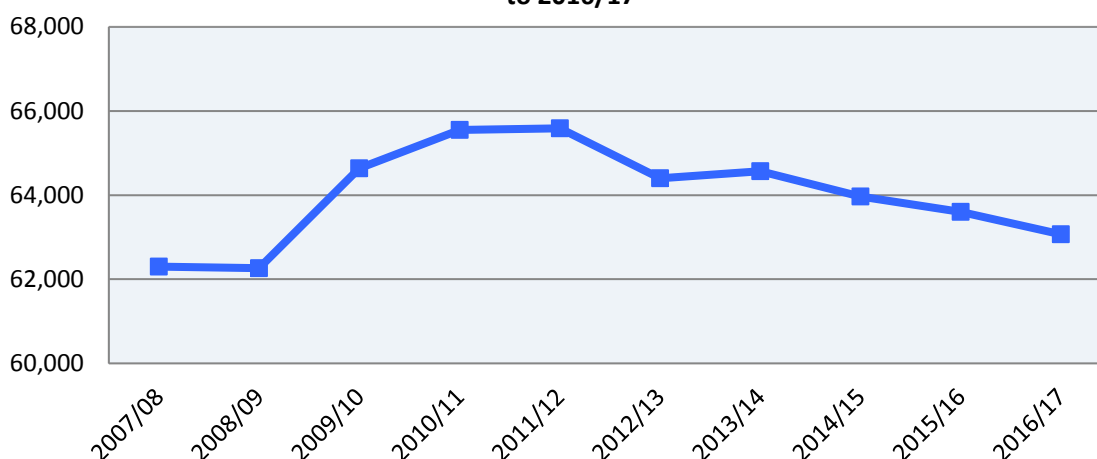
-  Section 1 - NI domiciled students enrolled at UK HEIs - 2016/17 (63,070)
-  Section 2 - Enrolments at NI HEIs - 2016/17 (54,570)

SECTION 1: Northern Ireland domiciled students enrolled at UK Higher Education Institutions (Tables 1 to 7)

1.1 Change over the last 10 years – 2007/08 to 2016/17 (Tables 1 and 2, Figure 1)

Although the number of NI students enrolled at UK HEIs in 2016/17 was 1.2% higher than in 2007/08, over the past decade, enrolments increased initially, from 62,300 in 2007/08 to a peak of 65,590 in 2011/12, before declining again to 63,070 in 2016/17; this included a 0.8% (535) decrease between 2015/16 (63,600) and 2016/17 (63,070) (Tables 1a, 1b and 1d, Figure 1).

Figure 1 - NI domiciled students enrolled at UK HEIs - 2007/08 to 2016/17



Although the proportion of NI domiciled students studying in GB in 2016/17 (26.9%) was similar to that of a decade ago (26.1% in 2007/08), during this period, it rose to 26.7% in 2011/12, before dipping to 24.8% in 2014/15 and increasing again to 26.9% in 2016/17. When we examine the full-time first year undergraduate cohort, this proportion has increased from 30.9% to 34.5% over the ten year period. Again this increase has not been constant, peaking in 2011/12 (35.9%) and again in 2015/16 (36.0%) (Tables 1a and 2a).

Over the 10 year period, the number of NI students going to GB to study increased by 4.3%, from 16,250 in 2007/08 to 16,955 in 2016/17; those studying through the Open University decreased by 8.8%, from 3,960 to 3,610 over the same period; while NI enrolments at NI HEIs (excluding the OU) increased by 1.0%, from 42,090 in 2007/08 to 42,505 in 2016/17 (Tables 1a and 1b).

In terms of level of study, 'first degree' courses have experienced the largest percentage increase of NI domiciled students, rising by 8.0% over the last ten years, from 44,685 to 48,240. While 'postgraduate' enrolments have increased by 4.8% over the same period, from 8,885 to 9,315, the number of students enrolled on 'other undergraduate' courses (such as foundation degrees, diplomas, HNDs and HNCs) has fallen by 36.8%, from 8,725 in 2007/08 to 5,515 in 2016/17 (Table 1c).

Full-time enrolments rose by 7.7% over the decade to 2016/17, compared with a 14.2% decrease in part-time enrolments. The drop in part-time enrolments is mainly related to the drop in the number doing part-time 'other undergraduate' courses (Table 1c).

1.2 Breakdown of enrolments – 2016/17 (Tables 1 to 4, Figure 2)

In 2016/17, 63,070 NI students were enrolled at UK HEIs, showing a decrease of 0.8% from 63,600 in 2015/16 (Table 1d).

Mode of study – In 2016/17, 75.0% of enrolments were full-time and 25.0% were part-time. In comparison with 2015/16, full-time enrolments have increased by 1.3%, from 46,720 in 2015/16 to 47,320 in 2016/17; and part-time enrolments have decreased by 6.7%, from 16,885 in 2015/16 to 15,745 in 2016/17. Full-time enrolments were at their highest point in the last ten years in 2016/17, while part-time enrolments were at their lowest point (Table 1 and 1e).

Level of study – Over three quarters (76.5%) of NI students were enrolled on a ‘first degree’ course, 8.7% on ‘other undergraduate’ courses and 14.8% on a ‘postgraduate’ course in 2016/17. ‘First degree’ enrolments increased by 0.7%, from 47,915 in 2015/16 to 48,240 in 2016/17, while ‘other undergraduates’ decreased by 11.3%, from 6,215 to 5,515, and ‘postgraduates’ decreased by 1.7%, from 9,475 to 9,315 (Tables 1f).

The number of NI domiciled full-time first year undergraduate enrolments at UK HEIs increased by 5.7%, from 13,280 in 2015/16 to 14,035 in 2016/17 (Table 2c).

Gender – In recent history, more females have been progressing into higher education than males. This gender gap does not begin at the point of entry to HE, but can be observed early on in the educational system. In NI, females are more likely to stay on in full-time education at age 16. They are more likely to be entered for A levels, more likely to pass them, and also more likely to do better (achieve an A grade, including A*) than males (Source: DENI Statistical Press Release: Year 12 and Year 14 Examination Performance at Post Primary Schools in 2016/17¹).

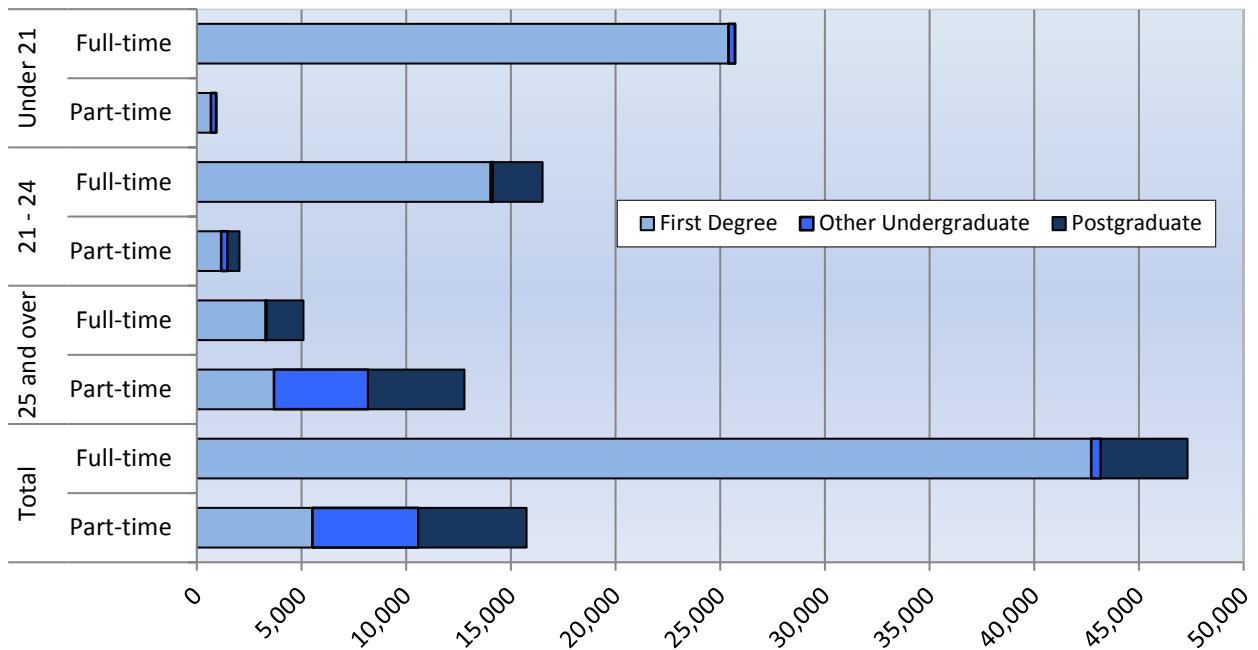
Over the past ten years, the female share of the NI domiciled student population enrolled at UK HEIs has declined, from 58.9% in 2007/08 to 56.8% in 2016/17. A higher proportion of males (76.7%) than females (73.8%) were studying full-time in 2016/17 (Table 3a and 3b).

A higher proportion of males than females were enrolled on ‘first degree’ courses in 2016/17 (78.8% compared with 74.7%), whereas females were more likely than males to be undertaking an ‘other undergraduate’ course (9.9% compared with 7.2%) or a ‘postgraduate’ course (15.3% compared with 14.0%) (Table 3c).

Age – In 2016/17, 42.2% of NI domiciled students enrolled at UK HEIs were aged ‘under 21’, 29.4% were aged ‘21 to 24’ and 28.4% were aged ‘25 and over’ (Table 4a).

¹ <https://www.education-ni.gov.uk/publications/statistical-bulletin-102017-year-12-and-14-examination-performance-post-primary-schools-northern>

Figure 2 : NI domiciled students enrolled at UK HEIs by age group, mode and level of study - 2016/17



The majority of younger students (those aged under 21) tend to enter HE straight from school and continue to study on a full-time basis. Older students (aged 25 and over) are more likely to study part-time. Many older students are combining work with part-time study and see HE as a way to develop their career, or to enable them to change to a different career. The majority (96.5%) of NI students aged 'under 21' were enrolled on a full-time course, as were 89.0% of those aged '21 to 24'. In comparison, the majority (71.5%) of those aged '25+' were enrolled on part-time courses (Table 4c, Figure 2).

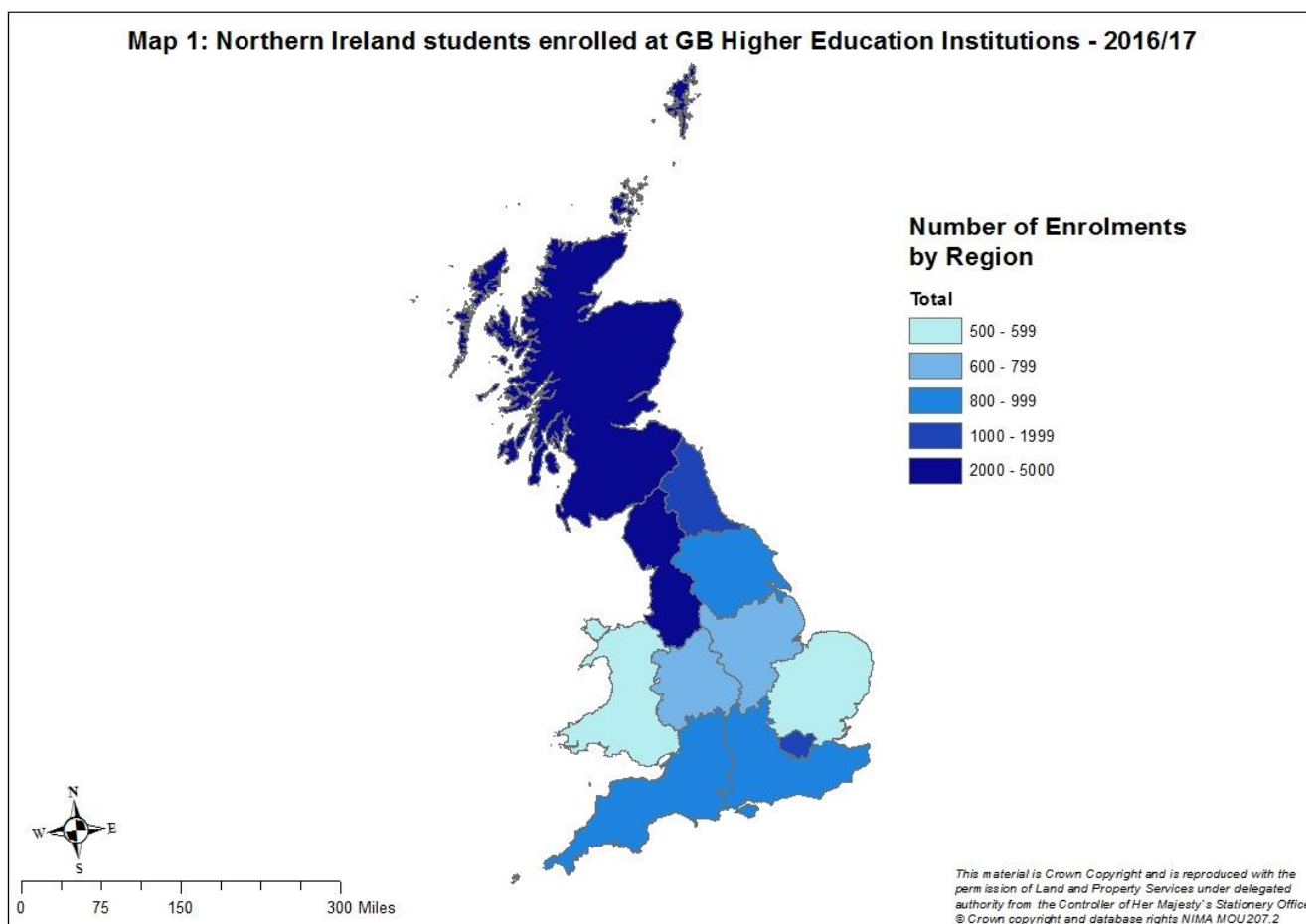
1.3 Location of Study (Tables 1 to 3 & 5)

There are various reasons why students leave NI to study, including their choice of subject, for example, some courses such as veterinary science are not supplied in Northern Ireland. However, available research² would suggest that the majority of those who plan to leave NI to study do so out of choice. Indeed, figures from the latest Destinations of Leavers from Higher Education survey³ show that around 66.9% of full-time students who left NI to study in GB did not return to NI to work approximately six months after qualifying.

² <https://www.economy-ni.gov.uk/publications/after-school-attitudes-and-perceptions-northern-ireland-school-leavers-towards-higher>

³ <https://www.economy-ni.gov.uk/publications/destinations-leavers-uk-higher-education-institutions-northern-ireland-analysis-201516>

Map 1: Northern Ireland students enrolled at GB Higher Education Institutions - 2016/17



Of the 63,070 NI students enrolled at UK HEIs in 2016/17, 73.1% (46,110) were enrolled at NI HEIs (including 5.7% (6,610) studying locally at the Open University) and 26.9% (16,955) at HEIs in GB (Table 1a).

The map above illustrates how many NI students were studying in each region of GB. The darker the shade of blue, the higher the number of NI students enrolled at HEIs in that region.

The most popular regions for NI students who studied in GB were the North West of England and Scotland, with 4,920 and 4,180 NI students enrolled at HEIs in each region respectively. Other popular regions were the North East of England, with 1,470 NI students, and London, with 1,155 (Table 5a).

In the North West, Liverpool John Moore's University alone had 1,775 NI student enrolments, making it the most popular HEI in GB for NI students. In Scotland, the HEIs with the most NI students in 2016/17 were the University of Dundee (720), the University of Glasgow (675) and the University of Edinburgh (480). In the North East, the University of Northumbria at Newcastle had 650 students from NI. In fact, it is worth noting that NI students were enrolled at 160 of the 163 publicly funded HEIs in the UK (Table 5b).

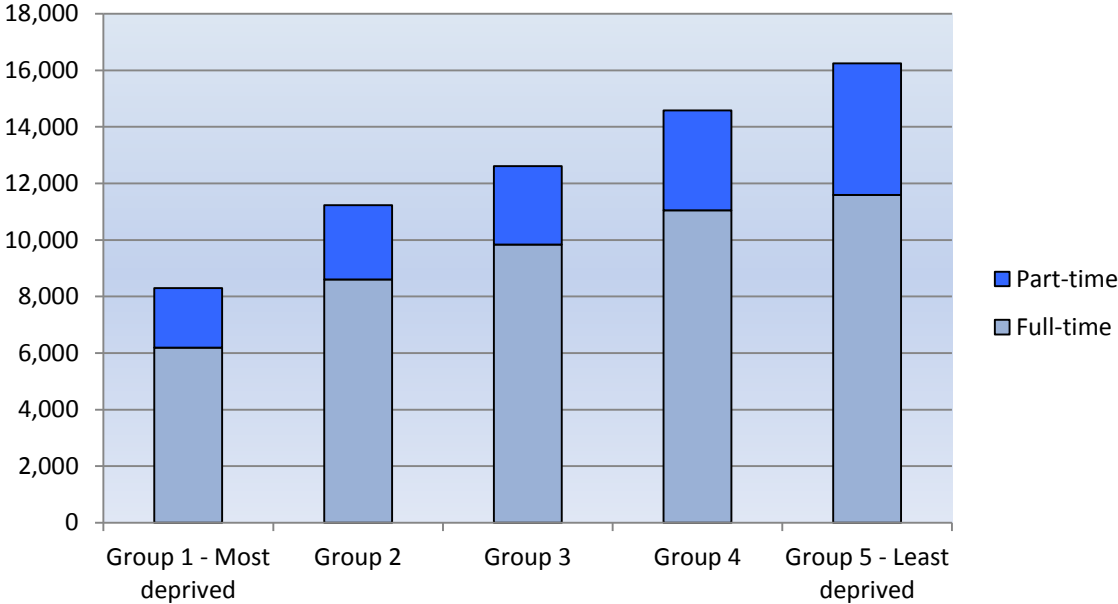
Similar proportions of males and females study in GB, with 26.4% of NI domiciled males enrolled at GB HEIs in 2016/17, and 27.2% of NI domiciled females (Table 3d).

Of the 14,035 NI domiciled full-time first year undergraduate enrolments at UK HEIs in 2016/17, 65.5% were enrolled at NI HEIs (an increase of 1.5 percentage points from 2015/16) and 34.5% were enrolled at HEIs in GB (a drop of 1.5 percentage points from 2015/16) (Table 2a).

1.4 Multiple Deprivation Measure quintiles (Table 6, Figure 3)

Of the 62,960 NI domiciled students enrolled at UK HEIs in 2016/17 whose postcodes were known, the highest proportion (25.8%) were from the least deprived multiple deprivation area in NI (quintile 5), almost double the proportion (13.2%) from the most deprived multiple deprivation area (quintile 1).

Figure 3: NI domiciled students enrolled at UK HEIs by mode of study and multiple deprivation measure quintile - 2016/17

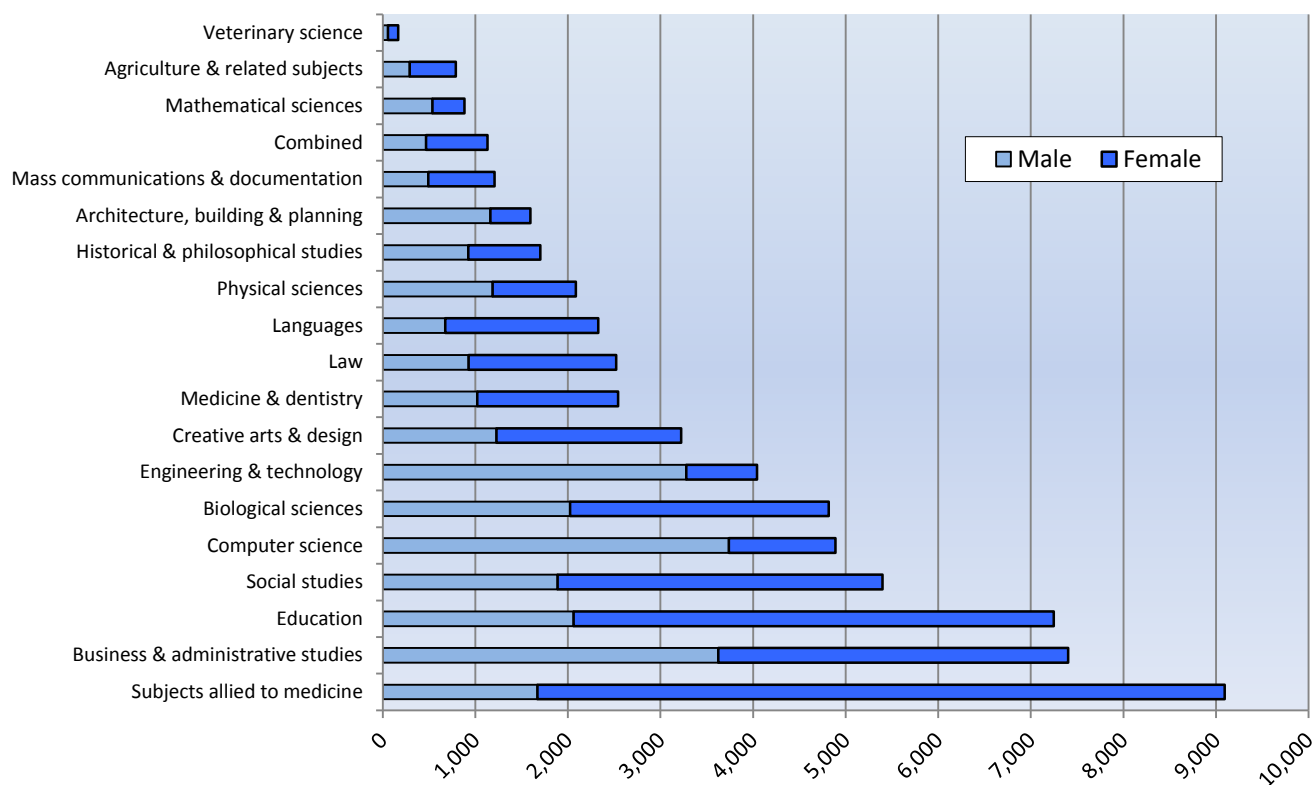


1.5 Subject of Study (Table 7, Figure 4)

In 2016/17, the most popular subject areas for NI students studying at UK HEIs were: ‘Subjects allied to medicine’ (which includes subjects such as nursing, pharmacy, occupational therapy and physiotherapy), with 9,095 (14.4%) enrolments; ‘Business and administrative studies’ (which includes subjects such as business studies, management studies, accounting, marketing and finance), with 7,405 (11.7%) enrolments; and ‘Education’ (which includes subjects such as training teachers, research study skills in education and academic studies in education), with 7,245 (11.5%) (Table 7c).

Females accounted for 81.6% of 2016/17 enrolments in ‘Subjects allied to medicine’, 71.5% of those studying ‘Education’ and 71.1% of those studying ‘Languages’. In contrast, males accounted for 81.1% of those studying ‘Engineering and technology’, 76.4% of ‘Computer science’ enrolments and 72.9% of ‘Architecture, building and planning’ enrolments (Table 7c, Figure 4).

Figure 4 : NI domiciled students enrolled at UK HEIs by gender and subject area - 2016/17



In 2016/17, 49.0% of NI students at UK HEIs were studying a Broad STEM⁴ related subject. A higher proportion of males (54.9%) than females (44.5%) were studying Broad STEM subjects. Full-time students (53.4%) were more likely to be studying Broad STEM subjects than part-time students (35.7%) (Tables 7a and 7b).

In 2016/17, 26.5% of NI students at UK HEIs were studying a Narrow STEM related subject. A higher proportion of males (39.5%) than females (16.6%) were studying Narrow STEM subjects. Full-time students (30.0%) were more likely than part-time students (16.0%) to be studying Narrow STEM subjects (Tables 7a and 7b).

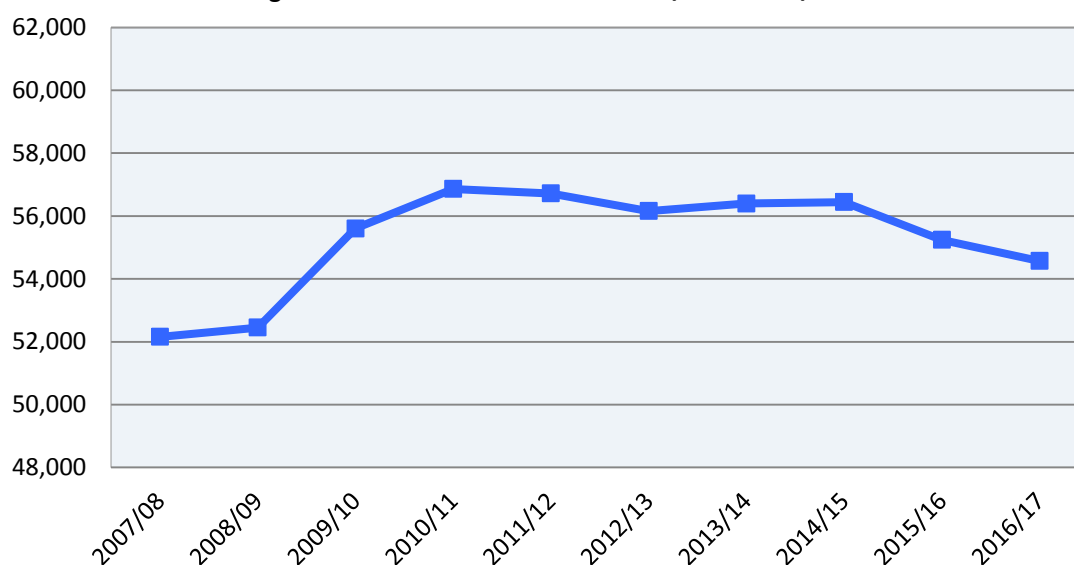
⁴ Science, Technology, Engineering and Mathematics – see notes to readers for description.

SECTION 2: Enrolments at Northern Ireland Higher Education Institutions (Tables 8 to 14)

2.1 Change over the last 10 years – 2007/08 to 2016/17 (Tables 8 & 9, Figure 5)

Despite a 1.2% (675) decrease between 2015/16 (55,245) and 2016/17 (54,570), student enrolments at NI HEIs have increased by a net 4.6% (2,415) over the past decade (from 52,155 in 2007/08) (Tables 8f and 8g, Figure 5).

Figure 5 - Enrolments at NI HEIs - 2007/08 to 2016/17



Students from NI now account for a smaller proportion of the total population of students at NI HEIs than they did 10 years ago. In 2007/08, students from NI accounted for 88.3% (46,040) of the total population of students at NI HEIs. However, by 2016/17 this proportion has decreased to 84.5% (46,110), despite numbers increasing by 0.2% over the ten year period. Over this period, NI HEIs have seen an increase in students from outside NI; the number of students from GB or non-EU countries increased by 190.9% (1,085 to 3,160) and 115.1% (1,310 to 2,815) respectively. In contrast, the number of students from Rol or other EU countries decreased by 36.3% (from 3,290 to 2,095) and 10.5% (from 430 to 385) respectively (Tables 8a and 8f).

Since 2011/12, Ulster University has registered students through a relatively new partnership with QA Higher Education, which includes significant numbers of students domiciled outside the UK and Rol. The increase in these students at NI HEIs over the past ten years is partly due to there being 290 students, domiciled outside the UK and Rol, enrolled on courses that have been jointly developed by Ulster University and QA Higher Education, in Birmingham or London, in 2016/17. Although these students are based in Birmingham or London, they are registered as Ulster University students (Table 8e).

In terms of level of study, 'first degree' enrolments have experienced an increase of 9.9% (from 34,435 to 37,840) over the ten year period. Enrolments on 'postgraduate' courses have also shown an increase of 11.7% (from 9,795 to 10,935), while those for 'other undergraduate' courses (such as foundation degrees, diplomas, HNDs and HNCs) have fallen by 26.9% (from 7,925 to 5,790) over the same time period (Table 8h).

The number of full-time enrolments increased by 12.1%, from 33,740 in 2007/08 to 37,825 in 2016/17, whereas there was a 9.1% decrease in part-time enrolments over the same period, from 18,410 to 16,745 (Table 8i).

2.2 Breakdown of enrolments – 2016/17 (Tables 8 to 11, Figure 6)

In 2016/17, 54,570 students were enrolled at NI HEIs, showing a decrease of 1.2% from 55,245 in 2015/16 (Table 8g).

Mode of study – In 2016/17, 69.3% of enrolments were full-time and 30.7% were part-time. In comparison with 2015/16, full-time enrolments have increased by 0.7% (from 37,545 to 37,825) and part-time enrolments have decreased by 5.4% (from 17,700 to 16,745) (Tables 8j and 8k).

Level of study – In 2016/17, 69.3% of students were enrolled on a ‘first degree’ course, 10.6% on ‘other undergraduate’ courses and 20.0% on a ‘postgraduate’ course. Between 2015/16 and 2016/17, ‘first degree’ enrolments decreased by 0.7% (from 38,095 to 37,840), while ‘other undergraduates’ decreased by 10.6% (from 6,475 to 5,790) and ‘postgraduates’ increased by 2.5% (from 10,675 to 10,935) (Tables 8l and 8m).

Between 2015/16 and 2016/17, the number of first year undergraduates enrolling at NI HEIs decreased by 2.6%, from 17,250 to 16,800; a 7.1% increase in full-time enrolments (from 9,855 to 10,555) was offset by a 15.6% decrease in part-time enrolments (from 7,395 to 6,245) (Table 9b).

Gender – In recent history, more females have been progressing into higher education than males. This gender gap does not begin at the point of entry to HE, but can be observed early on in the educational system. In NI, girls are more likely to stay on in full-time education at age 16. They are more likely to be entered for A levels, more likely to pass them, and also more likely to do better (achieve an A grade, including A*) than boys (Source: DENI Statistical Press Release: Year 12 and Year 14 Examination Performance at Post Primary Schools in 2016/17⁵).

Of the 54,570 students enrolled at NI HEIs in 2016/17, 56.9% were female and 43.1% were male (Table 10a).

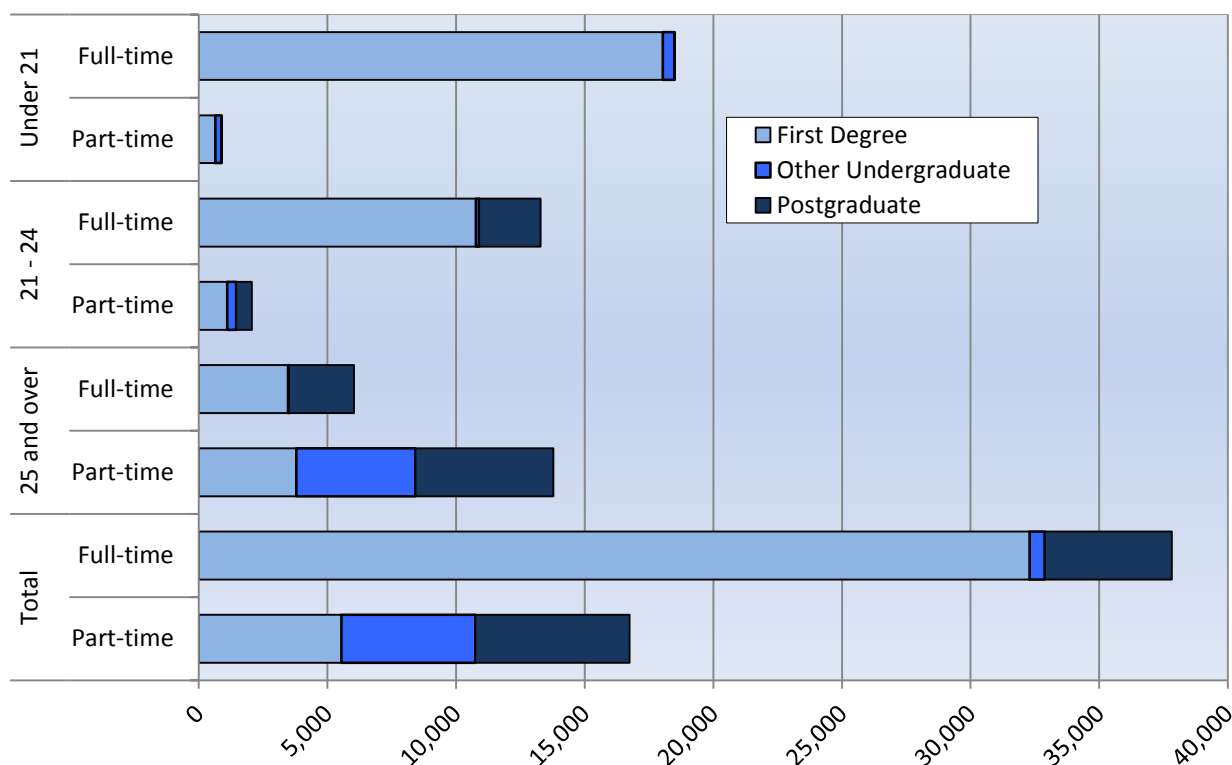
A higher proportion of males (72.9%) than females (66.6%) were studying full-time. Over the past ten years, the female share of the student population at NI HEIs has declined from 60.1% to 56.9% (Table 10b).

In 2016/17, males (73.0%) were more likely than females (66.6%) to be undertaking a ‘first degree’ course, while a higher proportion of females (12.2%) than males (8.6%) were enrolled on an ‘other undergraduate’ course or on ‘postgraduate’ courses (21.3% of females and 18.4% of males) (Table 10d).

Age – In 2016/17, 35.5% of students enrolled at NI HEIs were aged ‘under 21’, 28.1% were aged ‘21 to 24’ and 36.3% were ‘25 and over’ (Table 11a).

⁵ <https://www.education-ni.gov.uk/publications/statistical-bulletin-102017-year-12-and-14-examination-performance-post-primary-schools-northern>

Figure 6: Enrolments at NI HEIs by age group, mode and level of study - 2016/17



The majority of younger students (those aged under 21) tend to enter HE straight from school and continue to study on a full-time basis. Older students (aged 25 and over) are more likely to study part-time. Many older students are combining work with part-time study and see HE as a way to develop their career, or to enable them to change to a different career.

In 2016/17, the majority (95.4%) of students at NI HEIs aged 'under 21' were enrolled on a full-time course, as were 86.5% of those aged '21 to 24'. In contrast, the majority (69.6%) of those aged '25+' were enrolled on part-time courses (Table 11d, Figure 6).

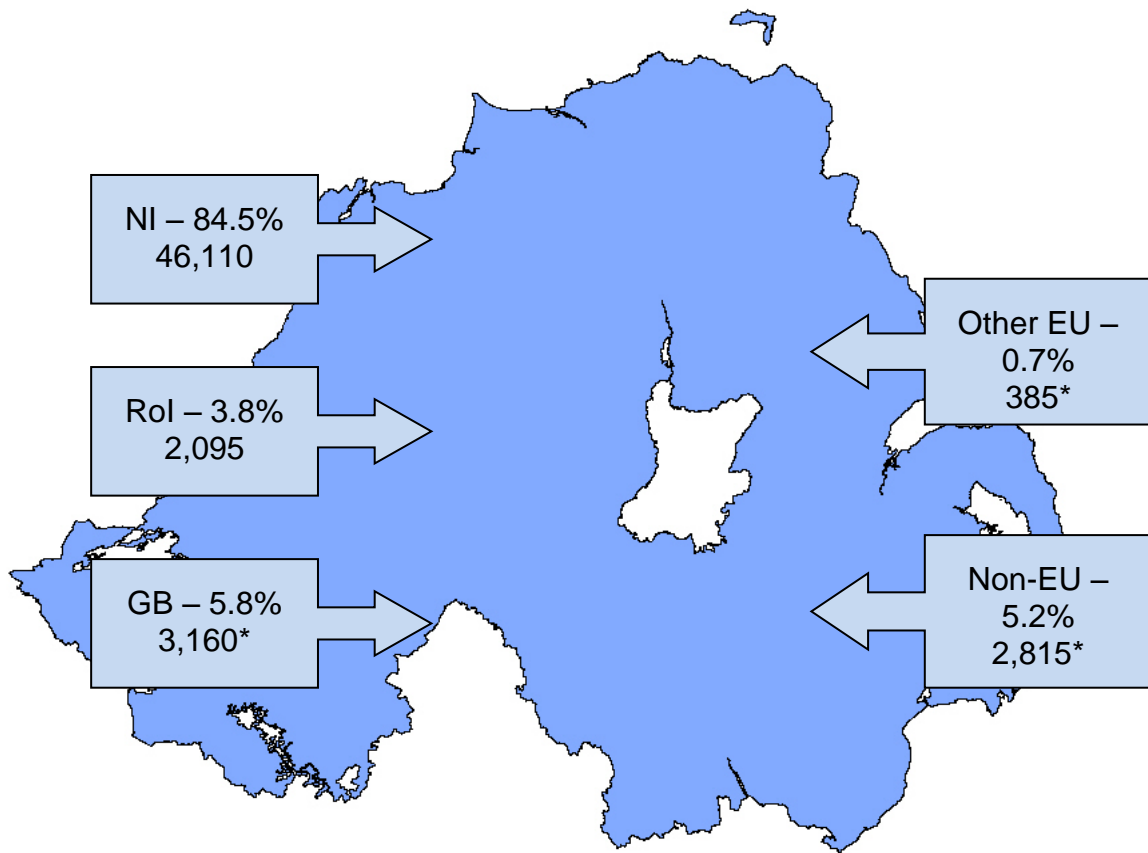
2.3 Country of Domicile (Tables 8 to 10, Figure 7)

Over the last 10 years, NI HEIs have experienced an increase in the number of enrolments of students from outside NI.

Of the 54,570 students enrolled at NI HEIs in 2016/17, 84.5% were from NI, 5.8% from Great Britain (GB), 5.2% from non-EU countries, 3.8% from the Republic of Ireland (RoI) and 0.7% from other EU countries (Table 8a, Map 2).

The proportion of GB domiciled students enrolled at NI HEIs was at the highest point in the last ten years in 2016/17 (3,160; 5.8%), whereas the proportion of RoI domiciled was at the lowest point in the last ten years (2,096; 3.8%) (Table 8a).

Map 2: HE Enrolments at campuses in NI by country of domicile – 2016/17



*Of the GB, other EU and non-EU enrolments, **715** enrolled on courses that have been jointly developed by the Ulster University and QA Higher Education in Birmingham and London. Although these students were based in Birmingham or London they were registered as Ulster University students.

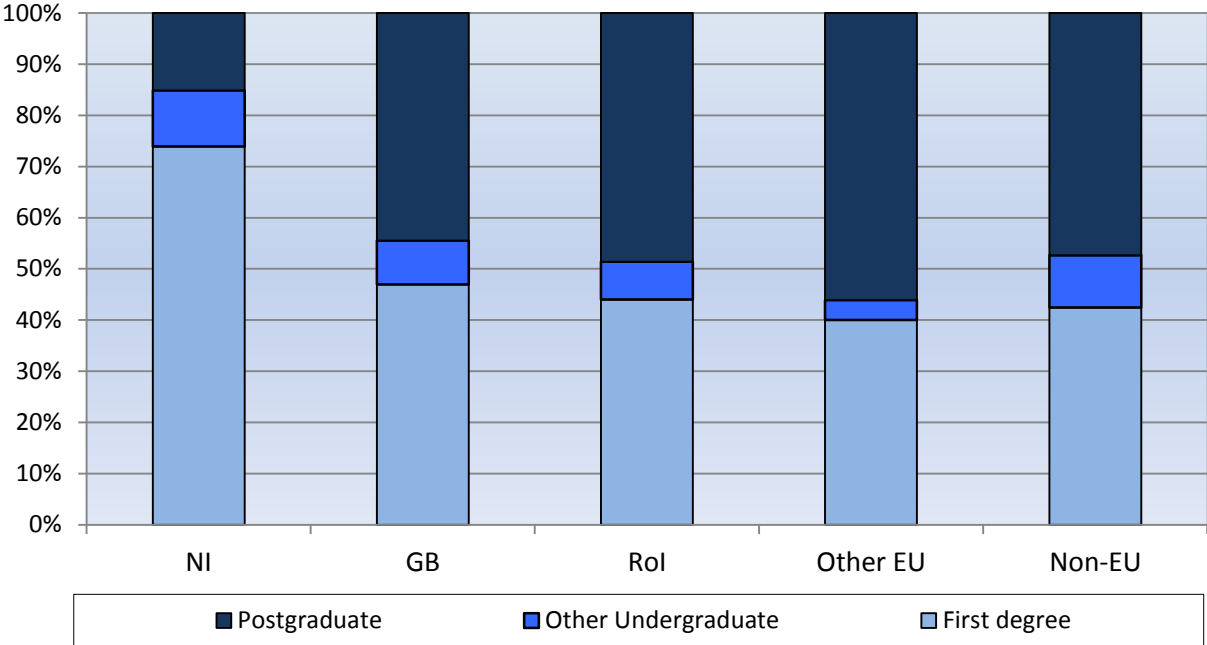
Reproduced by permission of LPSNI on behalf of the Controller of HMSO.
NIMA. No. MOU 203 © Crown Copyright

In 2016/17, students from over 100 different countries throughout the world were enrolled at NI HEIs. The countries from outside NI, GB and the RoI with the most students enrolled at NI campuses (not including those registered to Ulster University but based in Birmingham or London) were China (875), Malaysia (400), United States (185), India (125) and Hong Kong (Special Administrative Region of China) (115) (Table 8d).

The 290 enrolments, from students domiciled outside the UK and RoI, registered to Ulster University but based in Birmingham or London, were made up of students from around 40 different countries, including Bangladesh (60 students), India (40), Nepal (35), Romania (20) and China (20) (Table 8e).

Figure 7 below illustrates the contrast in level of study for NI students and those from other countries. The majority of students at NI HEIs from outside NI are enrolled on either ‘postgraduate’ or ‘other undergraduate’ courses, whereas the majority of students from NI are enrolled on ‘first degree’ courses (Table 8).

Figure 7 : Enrolments at NI HEIs by domicile and level of study - 2016/17

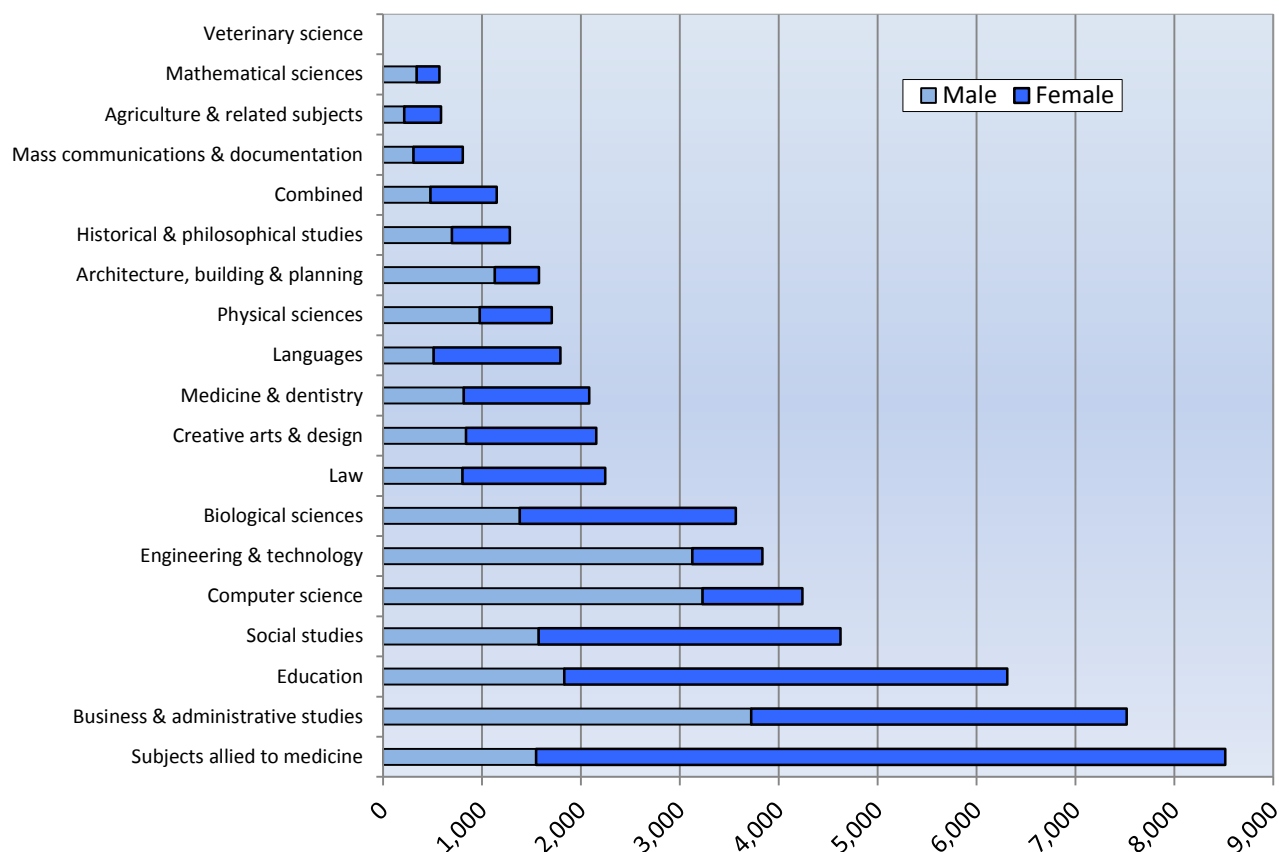


2.4 Subject of Study (Table 12, Figure 8)

In 2016/17, the most popular subject areas students were studying at NI HEIs were: ‘Subjects allied to medicine’ (which includes subjects such as nursing, pharmacy, occupational therapy and physiotherapy), with 8,515 (15.6%) enrolments; ‘Business and administrative studies’ (which includes subjects such as business studies, management studies, accounting, marketing and finance), with 7,520 (13.8%) enrolments; and ‘Education’ (which includes subjects such as training teachers, research study skills in education and academic studies in education), with 6,310 (11.6%) enrolments (Table 12c).

Females accounted for 81.8% of 2016/17 enrolments in ‘Subjects allied to medicine’, 71.5% of those studying ‘Languages’ and 70.9% of those studying ‘Education’. In contrast, males accounted for 81.5% of those studying ‘Engineering and technology’, 76.2% of ‘Computer science’ enrolments and 71.6% of ‘Architecture, building and planning’ enrolments (Table 12c, Figure 8).

Figure 8 : Enrolments at NI HEIs by gender and subject area - 2016/17



In 2016/17, 48.9% of students at NI HEIs were studying a Broad STEM⁶ related subject. A higher proportion of males (54.2%) than females (44.8%) were studying Broad STEM subjects. Full-time students (54.1%) were more likely than part-time students (37.1%) to be studying Broad STEM subjects (Tables 12a and 12b).

In 2016/17, 25.5% of students at NI HEIs were studying a Narrow STEM related subject. A higher proportion of males (38.5%) than females (15.7%) were studying Narrow STEM subjects. Full-time students (30.2%) were more likely than part-time students (14.8%) to be studying Narrow STEM subjects (Tables 12a and 12b).

2.5 Institutional breakdown (Table 13, Figure 9)

Of all students enrolled at NI HEIs in 2016/17, 45.2% were enrolled at Ulster University, 43.7% at Queen’s University Belfast, 2.7% at Stranmillis University College, 1.8% at St Mary’s University College and 6.6% at the Open University (Table 13b).

Ulster University

Ulster University enrolments decreased by 2.0% between 2015/16 and 2016/17 (from 25,155 to 24,640). Full-time enrolments increased by 0.6% (from 17,700 to 17,805) while part-time enrolments decreased by 8.3% (from 7,455 to 6,835) (Table 13a).

⁶ Science, Technology, Engineering and Mathematics – see notes to readers for full description.

The number of full-time students enrolled on courses jointly developed by Ulster University and QA Higher Education, and based in Birmingham and London, decreased by 10.3%, from 795 in 2015/16 to 715 in 2016/17 (Table 13c).

The number of full-time enrolments at Ulster University campuses based in NI (therefore not including UU Birmingham or London) increased by 1.1%, from 16,905 in 2015/16 to 17,090 in 2016/17, whereas part-time enrolments based in NI decreased by 8.3%, from 7,455 in 2015/16 to 6,835 in 2016/17 (Table 13d).

Between 2015/16 and 2016/17, 'first degree' enrolments at Ulster University showed a decrease of 0.4% (from 17,975 to 17,900), while 'other undergraduate' enrolments decreased by 33.4% (from 1,890 to 1,260) and 'postgraduate' enrolments increased by 3.6% (from 5,290 to 5,480) (Table 13e).

Queen's University Belfast

Enrolments at Queen's University Belfast decreased by 0.1% between 2015/16 and 2016/17, from 23,870 to 23,850. Full-time enrolments increased by 0.9% (from 17,965 to 18,135), while part-time enrolments decreased by 3.2% (from 5,905 to 5,720) (Table 13d).

'First degree' enrolments decreased by 0.2% (from 15,190 to 15,160) between 2015/16 and 2016/17, while all 'other undergraduates' decreased by 3.6% (from 3,770 to 3,635) and 'postgraduate' enrolments increased by 3.0% (from 4,910 to 5,055) (Table 13e).

Open University

Enrolments at the Open University (where the national centre is located in NI) decreased by 3.4% between 2015/16 and 2016/17, from 3,735 to 3,610. There were no full-time enrolments, so this decrease is reflective of part-time enrolments (Table 13d).

'First degree' enrolments decreased by 4.8% (from 3,000 to 2,855) between 2015/16 and 2016/17, while 'other undergraduate' enrolments increased by 2.9% (from 590 to 610) and 'postgraduate' enrolments decreased by 0.7% (from 150 to 145) (Table 13e).

Stranmillis University College

Enrolments at Stranmillis University College increased by 2.5% from 1,440 in 2015/16 to 1,475 in 2016/17. Full-time enrolments increased by 1.4% (from 1,000 to 1,010) and part-time enrolments increased by 5.0% (from 440 to 465) (Table 13d).

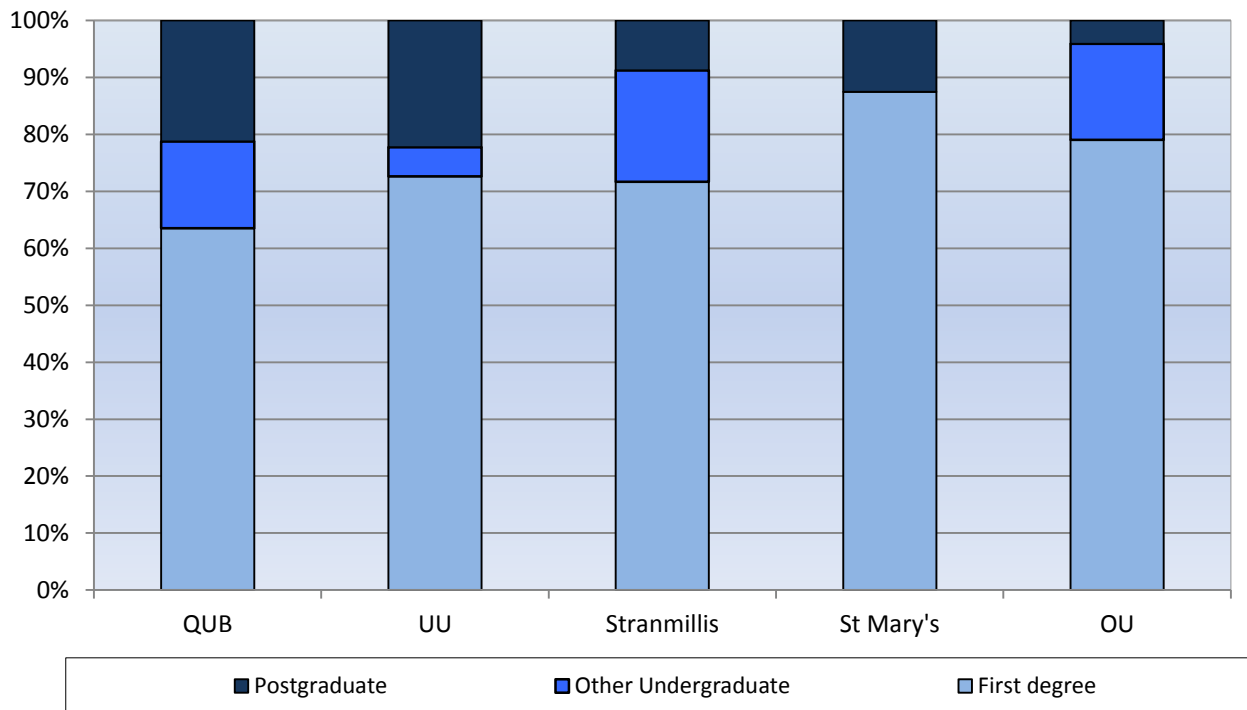
'First degree' enrolments increased by 0.1% (from 1,055 to 1,060) over this period and 'other undergraduate' enrolments increased by 30.2% (from 220 to 290), while 'postgraduate' enrolments decreased by 19.9% (from 160 to 130) (Table 13e).

St Mary's University College

The number of students enrolled at St Mary's University College decreased by 4.9%, from 1,040 in 2015/16 to 990 in 2016/17. This decrease can mostly be attributed to part-time enrolments, which fell by 27.0% (from 160 to 115), while full-time enrolments decreased by 0.9% (from 880 to 875) (Table 13d).

'First degree' enrolments decreased by 1.1% (from 875 to 865) over this period, while 'postgraduate' enrolments decreased by 24.8% (from 165 to 125). There were no 'other undergraduates' at this institution (Table 13e).

Figure 9 : Enrolments at NI HEIs by Institution and level of study - 2016/17



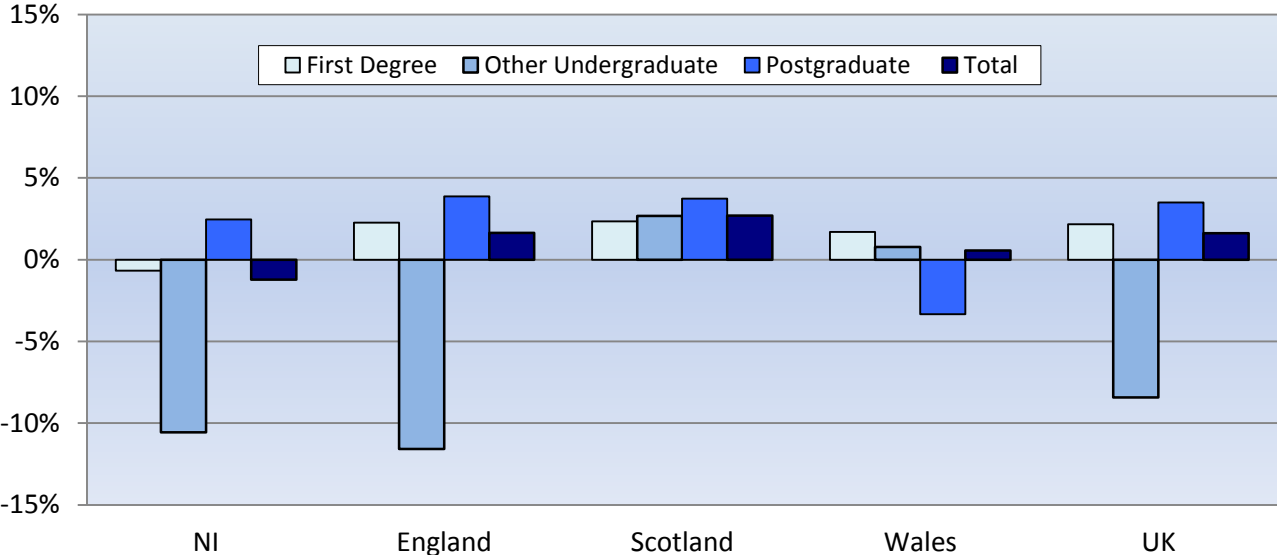
2.6 UK Comparison (Table 14, Chart 10)

In 2016/17, 2,317,880 students were enrolled at HEIs throughout the UK. In comparison with 2015/16, student numbers have increased by 1.6% (from 2,280,830) (Table 14a).

Over the same period, enrolments at English HEIs rose by 1.6% (from 1,861,345 to 1,891,980), Scottish HEIs showed an increase of 2.7% (from 235,565 to 241,935) and Welsh HEIs showed an increase of 0.6% (from 128,675 to 129,395). However, enrolments at NI HEIs decreased by 1.2% (from 55,245 to 54,570) (Table 14a).

Between 2015/16 and 2016/17, the number of ‘first degree’ enrolments increased at English HEIs (+2.3%), Scottish HEIs (+2.3%) and Welsh HEIs (+1.7%), but decreased at NI HEIs (-0.7%); the number of ‘other undergraduate’ enrolments fell in English HEIs (-11.6%) and NI HEIs (-10.6%) but rose in Scottish (+2.7%) and Welsh HEIs (+0.8%). ‘Postgraduate’ enrolments rose in all locations except Wales, where there was a decrease of 3.3% (Table 14b, Figure 10).

Figure 10 : Percentage change in Enrolments at UK HEIs by level of study and location of institution - 2015/16 to 2016/17



Between 2015/16 and 2016/17, full-time enrolments at English HEIs increased by 3.6% (from 1,431,735 to 1,482,880), while those in NI, Scottish and Welsh HEIs rose by 0.7% (from 37,545 to 37,825), 2.4% (from 179,460 to 183,795) and 1.9% (from 91,800 to 93,550) respectively (Table 14a).

Over the same period, the number of part-time enrolments rose in Scotland, from 56,105 to 58,140, but fell in all other locations; decreasing by 4.8% in England (from 429,610 to 409,100), 2.8% in Wales (from 36,875 to 35,845), and 5.4% in NI (from 17,700 to 16,745) (Table 14a).

NOTES:

1. The United Kingdom Statistics Authority (the Authority) has designated these statistics as National Statistics, in accordance with the Statistics and Registration Service Act 2007 and signifying compliance with the [Code of Practice](#) for Official Statistics.

National Statistics status means that Official Statistics meet the highest standards of trustworthiness, quality and public value.

All Official Statistics should comply with all aspects of the Code of Practice for Official Statistics. They are awarded National Statistics status following an assessment by the Authority's regulatory arm. The Authority considers whether the statistics meet the highest standards of Code compliance, including the value they add to public decisions and debate. Designation can be broadly interpreted to mean that the statistics: meet identified user needs; are well explained and readily accessible; are produced according to sound methods, and are managed impartially and objectively in the public interest.

Once statistics have been designated as National Statistics, it is a statutory requirement that the Code of Practice shall continue to be observed. It is the Department for the Economy's (DfE's) responsibility to maintain compliance with the standards expected of National Statistics. If we become concerned about whether these statistics are still meeting the appropriate standards, we will discuss any concerns with the Authority promptly. National Statistics status can be removed at any point when the highest standards are not maintained, and reinstated when standards are restored.

2. The statistics presented in this bulletin are based on data supplied by the Higher Education Statistics Agency (HESA). HESA is the official agency for the collection of information on publicly funded Higher Education (HE) institutions in the UK. It was set up in 1993 following the White Paper 'Higher Education: a new framework', which called for more coherence in HE statistics. HE institutions include all publicly-funded universities. The HESA data presented in this bulletin relate to students at HE institutions in the UK and, therefore, do not include HE enrolments at FE colleges in NI or GB, or at institutions in the Republic of Ireland.
3. HESA releases separate publications providing information on HE Student Enrolments and Qualifications obtained at HEIs for the whole of the UK. A notable difference in the HESA publications and those released by DfE is that, from 2014/15, HESA uses revised data returns for the time series figures, whereas DfE does not. Consequently, historical figures for the number of enrolments and qualifications at UK HEIs published by DfE may differ from those in HESA's publications. Further information on this can be found in the 'Notes' section of HESA's Statistical First Release (SFR) 2016/17: <https://www.hesa.ac.uk/news/11-01-2018/sfr247-higher-education-student-statistics/notes>
4. **Change to HESA Methodology** - From 2013/14, HESA has changed the allocation of Open University (OU) students to England, Wales, Scotland and Northern Ireland.

Previously, all OU enrolments and qualifications were counted as being within England, where the OU has its administrative centre. HESA has decided from its 2013/14 release onwards that enrolments and qualifications registered at one of the OU's national centres in Wales, Scotland and Northern Ireland will contribute to the totals of those countries where statistics are shown by country of provider. Please note that all non-UK domicile OU students and those who study at postgraduate research level are registered to the OU administrative centre in England.

A full public consultation of NI users of Higher Education Statistics was undertaken by DfE (formerly DEL) in 2015 on this change to the method for allocating OU students, which showed full support. This new allocation method for OU was adopted for all NI HE publications going forward from 2014/15.

5. The bulletin contains HESA data only (that is, data on enrolments at UK HEIs only). Information on enrolments on HE courses at NI and GB FE colleges, RoI institutions and the College of Agriculture, Food and Rural Enterprise (CAFRE) is available via a separate statistical fact sheet, which is published on the [Department's website](#).
6. **Further statistics** on the Northern Ireland HE sector, including qualification gained, graduate destinations and various higher education fact sheets can be downloaded from the Department's website:
<https://www.economy-ni.gov.uk/topics/statistics-and-economic-research/higher-education-statistics>
7. **Guidance on the production of HE statistics** - Information on methods for collecting and analysing HE data, the quality of HE statistics, and links to the quality guidance used in managing the production of HE statistics can be accessed on our statistics guidance page:
<https://www.economy-ni.gov.uk/articles/quality-higher-education-statistics>
8. **Uses made of HE statistics** - This bulletin is disseminated direct to approximately 100 users. In addition, it is published on the Department's website and can be accessed through a link on the UK National Statistics [GOV.UK](#) publication hub using a filter of 'higher education' as the policy area and 'Department for the Economy' as the department. Users include policy colleagues in DfE, academics, researchers, members of the public, the NI Assembly, other government departments and other interested parties and individuals.

The bulletin and further analysis of the data provide an evidence base that is used in a number of DfE policies, strategies and reviews. Some of the most recent examples are:

- DfE's Higher Education Strategy
- DfE's Widening Participation Strategy

Further details on these strategies are available from the DfE website:

<https://www.economy-ni.gov.uk/articles/higher-education-strategies-northern-ireland>

In addition, HE data are used within other NI departments and their agencies. Some of the most recent examples are:

- DoF - as a key indicator in the Education Domain of the Northern Ireland Multiple Deprivation Measure (NI MDM).
- DE – teacher demand model
- Invest NI – to quantify the supply of graduates for potential inward investment to NI

Around 200 HE statistical enquiries per year are received by the Department from various sources. These include requests for further breakdowns of enrolments, qualifications and destinations data.

9. Departmental Targets

Statistics from this bulletin are used in the measurement of the following key commitment as set in the Department’s Northern Ireland *Higher Education Strategy*:

<https://www.economy-ni.gov.uk/articles/higher-education-strategies-northern-ireland>

“Increase the proportion of Higher Education graduates qualifying in STEM subjects to 22%.”

10. Rounding Strategy – DfE conforms to the HESA rounding strategy. Due to the provisions of the Data Protection Act (1998) and the Human Rights Act (1998), HESA (and therefore DfE) implements a strategy, in published and released tabulations, designed to prevent the disclosure of personal information about any individual. This strategy involves rounding all numbers to the nearest 5, and suppressing percentages and averages based on small populations.

The HESA rounding strategy changed for the 2013/14 release onwards. Percentages are now suppressed if based on a population of fewer than 22.5 individuals; this is a change from the previous threshold of 52 individuals, used in earlier publications. This change will enable more percentage calculations to be published. A full list of the rounding strategy includes:

- 0, 1 and 2 are rounded to 0;
- all other numbers are rounded to the nearest multiple of 5;
- percentages based on fewer than 22.5 individuals are suppressed;
- averages based on fewer individuals are also suppressed;
- percentages and averages are based on unrounded figures;
- percentages are rounded to one decimal place;
- full-time equivalent (FTE) data are not rounded; and
- financial data are not rounded

Total figures are also subject to this rounding methodology; so the sum of numbers in each row or column may not match the total shown.

DEFINITIONS:

Higher Education

11. HE students for the purpose of HESA's data collection are those students on courses for which the level of instruction is above that of Level 3 of the Qualifications and Curriculum Authority (QCA) National Qualifications Framework (NQF) (for example, courses at the level of Certificate of HE and above).

Count of Students

12. The HESA Student Record contains information about individual enrolments which, because a student can be enrolled on more than one programme of study, will exceed the number of students.

13. HESA data are a count of enrolments across the entire academic year.

Academic year

14. The academic year runs from 1st August to 31st July.

First year students

15. First year students are based on the HESA standard registration population who commenced their instance in the reporting period relevant to the data collection year. The term 'instance' is used to describe a student's engagement with the institution aiming towards the award of a qualification(s) or credit.

Domicile

16. Domicile refers to a student's permanent place of residence prior to enrolment on a course.

17. Student enrolments recorded with domicile UK region unknown, Channel Islands and Isle of Man are included in the GB category for the purposes of this statistical bulletin.

Level of course

18. Level of study

- I. *Postgraduate* programmes of study are those leading to higher degrees, diplomas and certificates (including Postgraduate Certificate of Education (PGCE) and professional qualifications) and usually require that entrants are already qualified to degree level (that is, already qualified at Level 6 of the QCA National Qualifications Framework).
- II. *First degrees* include: first degrees with or without eligibility to register to practice with a health or social care or veterinary statutory regulatory body; first degrees with Qualified Teacher Status (QTS)/registration with a General Teaching Council (GTC); enhanced first degrees; first degrees obtained concurrently with a diploma; and intercalated first degrees.

- III. *Foundation degrees* were first introduced in September 2001. They are vocational higher education qualifications and are at level 5 of the QCA National Qualifications Framework.
- IV. *Other undergraduate* includes qualification aims equivalent to and below first degree level, such as Professional Graduate Certificate in Education (PGCE), foundation degrees, diplomas in HE with eligibility to register to practice with a Health or Social Care or veterinary statutory regulatory body, Higher National Diploma (HND), Higher National Certificate (HNC), Diploma of Higher Education (DipHE), Certificate of Higher Education (CertHE), foundation courses at HE level, NVQ/SVQ Levels 4 and 5, post-degree diplomas and certificates at undergraduate level, professional qualifications at undergraduate level, other undergraduate diplomas and certificates including post registration health and social care courses, other formal HE qualifications of less than degree standard, institutional undergraduate credit and no formal undergraduate qualifications.

Mode of attendance

19. Mode of attendance distinguishes students studying full-time or part-time:

- I. *Full-time* students are those normally required to attend an Institution for periods amounting to at least 24 weeks within the year of study, on thick or thin sandwich courses, and those on a study-related year out of their institution. During that time, students are normally expected to undertake periods of study, tuition or work experience, which amount to an average of at least 21 hours per week.
- II. *Part-time* students are those recorded as studying part-time, or studying full-time on courses lasting less than 24 weeks, on block release, or studying during the evenings only.

Age

20. Age is as at 31st August within the relevant academic year.

STEM – Science, Technology, Engineering and Maths Enrolments

21. Broad STEM includes the following subject areas: Medicine and Dentistry; Subjects allied to Medicine; Biological Sciences; Veterinary Sciences; Agriculture and related subjects; Physical Sciences; Mathematical Sciences; Computer Science; Engineering and Technology; and Architecture, Building and Planning.

Narrow STEM is a subset of Broad STEM and includes the following subject areas: Biological Sciences; Physical Sciences; Mathematical Sciences; Computer Science; and Engineering and Technology.

Multiple Deprivation Measure (MDM)

22. The analysis presented in section 1.4 utilises five groups (quintiles) of Super Output Areas (SOAs) across Northern Ireland. These five groups are determined based on level of deprivation using the Northern Ireland Multiple Deprivation Measure (NIMDM).

SOAs ranked 1 to 178 are the most deprived quintile relative to all other SOAs. Those ranked 713 to 890 are the most affluent relative to all other SOAs. SOA is determined using the postcode provided on the enrolment record.

In 2016, there was a consultation proposing changes to the methodology of MDM measurement. Once the findings of this are analysed, a new version, MDM2017, may be introduced for use in NI.

NIMDM (2017) is a weighted combination of the seven domains of deprivation. The Income and Employment Deprivation domains combined account for nearly 50% of the multiple deprivation measure. The Health and Disability Domain, and Education Domain combined account for a further 30%, and the remainder is made up of the Access to Services, Living Environment and Crime and Disorder Domains.

For further details on deprivation measurement in Northern Ireland, please follow this link: <https://www.nisra.gov.uk/statistics/deprivation/northern-ireland-multiple-deprivation-measure-2017-nimdm2017#toc-2>

Media enquiries should be made to the Department's Press Office in Netherleigh, Massey Avenue, Belfast, BT4 2JP, Tel: (028) 9052 9604, Email: pressoffice@economy-ni.gov.uk

Northern Ireland domiciled students enrolled at UK Higher Education Institutions

[Table 1](#) – Northern Ireland domiciled students enrolled at UK HEIs by level of study, mode of study and location of institution – 2007/08 to 2016/17.....Page 39

[Table 1a](#) – Northern Ireland domiciled students enrolled at UK HEIs by mode of study and location of institution – 2007/08 and 2016/17 (with %).....Page 40

[Table 1b](#) – Percentage change of Northern Ireland domiciled students enrolled at UK HEIs in each location by mode of study between 2007/08 and 2016/17.....Page 40

[Table 1c](#) – Percentage change of Northern Ireland domiciled students enrolled at UK HEIs by mode of study and level of study between 2007/08 and 2016/17.....Page 40

[Table 1d](#) – Percentage change of Northern Ireland domiciled students enrolled at UK HEIs by mode of study and location of institution between 2015/16 and 2016/17.....Page 41

[Table 1e](#) – Percentage change in Northern Ireland domiciled students enrolled at UK HEIs by mode of study between 2015/16 and 2016/17 (with %).....Page 41

[Table 1f](#) – Percentage change of Northern Ireland domiciled students enrolled at UK HEIs by mode of study and level of study between 2015/16 and 2016/17 (with %).....Page 41

[Table 2](#) – Northern Ireland domiciled first year students enrolled at UK HEIs by level of study, mode of study and location of institution – 2007/08 to 2016/17.....Page 42

[Table 2a](#) – Northern Ireland domiciled first year undergraduate students enrolled at UK HEIs by mode of study and location of institution - 2007/08 and 2016/17 (with %).....Page 43

[Table 2b](#) – Percentage change of Northern Ireland domiciled first year undergraduate students enrolled at UK HEIs in each location by mode of study between 2007/08 and 2016/17.....Page 43

[Table 2c](#) – Percentage change of Northern Ireland domiciled first year undergraduate students enrolled at UK HEIs in each location by mode of study between 2015/16 and 2016/17.....Page 43

[Table 3](#) – Northern Ireland domiciled students enrolled at UK HEIs by mode of study, level of study, location of institution and gender - 2016/17.....Page 44

[Table 3a](#) – Northern Ireland domiciled students enrolled at UK HEIs by mode of study and gender - 2007/08 and 2016/17 (with %).....Page 45

Table 3b – Northern Ireland domiciled students enrolled at UK HEIs by gender and mode of study – 2007/08 and 2016/17 (with %)	Page 45
Table 3c – Northern Ireland domiciled students enrolled at UK HEIs by gender and level of study – 2016/17 (with %)	Page 45
Table 3d – Northern Ireland domiciled students enrolled at UK HEIs by mode of study, gender and location of institution – 2016/17 (with %)	Page 45
Table 4 – Northern Ireland domiciled students enrolled at UK HEIs by level of study, mode of study, gender and age – 2016/17	Page 46
Table 4a – Northern Ireland domiciled students enrolled at UK HEIs by level of study and age group – 2016/17 (with %)	Page 47
Table 4b – Northern Ireland domiciled students enrolled at UK HEIs by age group, level and mode of study – 2016/17	Page 47
Table 4c – Proportion of Northern Ireland domiciled students enrolled at UK HEIs by age group, level and mode of study – 2016/17	Page 47
Table 5 – Northern Ireland domiciled students enrolled at UK HEIs by year of study and gender – 2016/17 (a) by region of institution (b) by institution (top 20 only)	Page 48
Table 6 – Northern Ireland domiciled students enrolled at UK HEIs by mode of study, MDM quintile, level of study and gender – 2016/17	Page 49
Table 6a – Northern Ireland domiciled students enrolled at UK HEIs by mode of study and MDM quintile – 2016/17 (with %)	Page 50
Table 7 – Northern Ireland domiciled students enrolled at UK HEIs by mode of study, gender and subject area – 2016/17	Page 51
Table 7a – Northern Ireland domiciled students enrolled at UK HEIs by gender and STEM – 2016/17 (with %)	Page 52
Table 7b – Northern Ireland domiciled students enrolled at UK HEIs by mode of study and STEM – 2016/17 (with %)	Page 52
Table 7c – Northern Ireland domiciled students enrolled at UK HEIs by subject area and gender – 2016/17 (with %)	Page 52

Enrolments at Northern Ireland Higher Education Institutions

[Table 8](#) – Enrolments at Northern Ireland HEIs including OU by level of study, mode of study and domicile – 2007/08 to 2016/17.....Page 53

[Table 8a](#) – Enrolments at Northern Ireland HEIs by domicile – 2007/08 to 2016/17 (with %)......Page 54

[Table 8b](#) – Enrolments at NI HEIs by domicile, level of study, mode of study and institution – 2016/17.....Page 54

[Table 8c](#) – Enrolments at Ulster University by domicile, level of study, mode of study and campus – 2016/17.....Page 55

[Table 8d](#) – Enrolments from outside the UK and RoI at Northern Ireland HEIs (not including UU Birmingham or London) by country of domicile (top 20) and institution – 2016/17.....Page 56

[Table 8e](#) – Enrolments from outside the UK and RoI at UU Birmingham and London by country of domicile (top 20) and institution – 2016/17.....Page 56

[Table 8f](#) – Percentage change of enrolments at Northern Ireland HEIs by domicile between 2007/08 and 2016/17.....Page 56

[Table 8g](#) – Percentage change of enrolments at Northern Ireland HEIs by domicile between 2015/16 and 2016/17.....Page 56

[Table 8h](#) – Percentage change of enrolments at Northern Ireland HEIs by level of study between 2007/08 and 2016/17.....Page 57

[Table 8i](#) – Percentage change of enrolments at Northern Ireland HEIs by mode of study between 2007/08 and 2016/17.....Page 57

[Table 8j](#) – Enrolments at Northern Ireland HEIs by mode of study – 2007/08 to 2016/17 (with %)......Page 57

[Table 8k](#) –Percentage change of enrolments at Northern Ireland HEIs by mode of study between 2015/16 and 2016/17.....Page 57

[Table 8l](#) – Enrolments at Northern Ireland HEIs by level of study – 2007/08 to 2016/17 (with %)......Page 58

[Table 8m](#) – Percentage change of enrolments at Northern Ireland HEIs by level of study between 2015/16 and 2016/17.....Page 58

[Table 9](#) – First year enrolments at Northern Ireland HEIs including OU by level of study, mode of study and domicile – 2007/08 to 2016/17.....Page 59

[Table 9a](#) – First year undergraduate enrolments at Northern Ireland HEIs by mode of study – 2007/08 to 2016/17.....Page 60

Table 9b – Percentage change of <u>first year undergraduate</u> enrolments at Northern Ireland HEIs by mode of study between 2015/16 and 2016/17.....	Page 60
Table 10 – Enrolments at Northern Ireland HEIs by level of study, mode of study, gender, year of student and country of domicile – 2016/17.....	Page 61
Table 10a – Enrolments at Northern Ireland HEIs by mode of study and gender – 2016/17 (with %).....	Page 62
Table 10b – Enrolments at Northern Ireland HEIs by gender and mode of study – 2016/17 (with %).....	Page 62
Table 10c – Enrolments at Northern Ireland HEIs by gender and level of study – 2016/17.....	Page 62
Table 10d – Proportion of enrolments at Northern Ireland HEIs by gender and level of study – 2016/17.....	Page 62
Table 11 – Enrolments at Northern Ireland HEIs by level of study, age group, year of student, mode of study and gender – 2016/17.....	Page 63
Table 11a – Enrolments at Northern Ireland HEIs by level of study and age group – 2016/17 (with %).....	Page 64
Table 11b – Enrolments at Northern Ireland HEIs by age group by level of study – 2016/17 (with %).....	Page 64
Table 11c – Enrolments at Northern Ireland HEIs by age group, mode of study and level of study – 2016/17.....	Page 64
Table 11d – Proportion of enrolments at Northern Ireland HEIs in each mode and level of study by age group – 2016/17.....	Page 64
Table 12 – Enrolments at Northern Ireland HEIs by subject area, year of student, mode of study and gender – 2016/17.....	Page 65
Table 12a – Enrolments at Northern Ireland HEIs by gender and STEM – 2016/17 (with %).....	Page 66
Table 12b – Enrolments at Northern Ireland HEIs by mode of study and STEM – 2016/17 (with %).....	Page 66
Table 12c – Enrolments at Northern Ireland HEIs by subject area and gender – 2016/17 (with %).....	Page 66
Table 13 – Enrolments at Northern Ireland HEIs by level of study, mode of study and institution – 2012/13 to 2016/17.....	Page 67
Table 13a – Percentage change of enrolments at Northern Ireland HEIs in each level of study and institution between 2015/16 and 2016/17.....	Page 68

Table 13b – Proportion of enrolments at Northern Ireland HEIs in each institution by mode of study – 2016/17.....	Page 68
Table 13c – Percentage change of enrolments at UU Birmingham and London by mode of study between 2015/16 and 2016/17.....	Page 68
Table 13d – Percentage change of enrolments at Northern Ireland HEIs (not including UU Birmingham or London) by mode of study between 2015/16 and 2016/17.....	Page 69
Table 13e – Percentage change of enrolments at Northern Ireland HEIs in each institution by level of study between 2015/16 and 2016/17.....	Page 69
Table 14 – (UK COMPARISON) All enrolments at UK HEIs including OU by level of study, mode of study and location of institution – 2012/13 to 2016/17.....	Page 70
Table 14a – Percentage change of enrolments at UK HEIs in each institution by mode of study between 2015/16 and 2016/17.....	Page 71
Table 14b – Percentage change of enrolments at UK HEIs in each institution by level of study between 2015/16 and 2016/17.....	Page 71

ANNEX A: TABLES

Table 1: Northern Ireland domiciled students enrolled at UK HEIs by level of study, mode of study and location of institution - 2007/08 to 2016/17

Mode and Year	First degree				Other undergraduate				Postgraduate				Total				NI HEIs (incl. NI OU)
	Location of Institution				Location of Institution				Location of Institution				Location of Institution				
	NI	GB	OU ⁽¹⁾	Total	NI	GB	OU ⁽¹⁾	Total	NI	GB	OU ⁽¹⁾	Total	NI	GB	OU ⁽¹⁾	Total	
Full-time																	
2007/08	27,075	12,125	0	39,200	720	405	0	1,125	2,430	1,190	0	3,620	30,225	13,720	0	43,950	30,225
2008/09	27,505	12,235	0	39,740	230	375	0	605	3,030	1,135	0	4,165	30,765	13,745	0	44,510	30,765
2009/10	28,200	12,305	0	40,500	245	365	0	610	3,160	1,270	0	4,430	31,600	13,935	0	45,540	31,600
2010/11	28,230	12,585	0	40,815	230	370	0	600	3,555	1,300	0	4,860	32,015	14,255	0	46,270	32,015
2011/12	28,255	13,470	0	41,725	255	390	0	645	3,075	1,270	0	4,345	31,585	15,125	0	46,715	31,585
2012/13	28,100	13,270	0	41,370	250	230	0	480	2,850	1,090	0	3,940	31,200	14,590	0	45,790	31,200
2013/14	28,505	13,130	0	41,635	300	185	0	485	2,950	1,175	0	4,125	31,760	14,485	0	46,245	31,760
2014/15	29,065	12,795	0	41,860	270	150	0	420	2,980	1,170	0	4,150	32,310	14,115	0	46,430	32,310
2015/16	28,810	13,235	0	42,045	280	170	0	450	2,960	1,265	0	4,225	32,045	14,675	0	46,720	32,045
2016/17	28,825	13,895	0	42,720	325	130	0	455	2,905	1,240	0	4,145	32,055	15,265	0	47,320	32,055
Part-time																	
2007/08	3,050	520	1,910	5,480	4,995	915	1,695	7,600	3,815	1,095	355	5,265	11,860	2,530	3,960	18,350	15,815
2008/09	2,560	505	2,130	5,190	4,685	955	1,785	7,420	3,695	1,140	305	5,140	10,940	2,595	4,220	17,755	15,145
2009/10	3,000	480	2,340	5,820	4,880	690	1,985	7,555	4,190	1,235	300	5,725	12,070	2,405	4,625	19,100	16,680
2010/11	2,860	425	2,595	5,885	5,085	825	1,995	7,905	4,000	1,220	270	5,490	11,945	2,470	4,865	19,280	16,805
2011/12	2,765	355	2,790	5,910	4,605	825	1,770	7,200	4,300	1,205	255	5,765	11,675	2,380	4,820	18,875	16,490
2012/13	2,880	280	3,000	6,160	5,020	605	1,195	6,825	4,280	1,095	250	5,625	12,180	1,980	4,445	18,610	16,620
2013/14	2,615	270	3,005	5,890	5,020	455	880	6,355	4,750	1,080	255	6,085	12,380	1,805	4,140	18,325	16,520
2014/15	2,325	280	3,065	5,665	5,110	390	560	6,060	4,550	1,085	175	5,810	11,985	1,755	3,800	17,535	15,780
2015/16	2,610	260	3,000	5,870	4,790	385	590	5,765	3,970	1,125	150	5,250	11,370	1,775	3,740	16,885	15,105
2016/17	2,405	260	2,855	5,520	4,130	320	610	5,055	3,910	1,110	150	5,170	10,445	1,690	3,610	15,745	14,055
Total																	
2007/08	30,130	12,645	1,910	44,685	5,710	1,320	1,695	8,725	6,245	2,285	355	8,885	42,085	16,250	3,960	62,300	46,040
2008/09	30,060	12,740	2,130	44,930	4,915	1,325	1,785	8,025	6,725	2,275	305	9,310	41,700	16,345	4,220	62,265	45,910
2009/10	31,200	12,785	2,340	46,320	5,120	1,055	1,985	8,165	7,350	2,505	300	10,155	43,670	16,345	4,625	64,635	48,285
2010/11	31,090	13,010	2,595	46,695	5,310	1,200	1,995	8,505	7,555	2,520	270	10,350	43,960	16,730	4,865	65,555	48,820
2011/12	31,025	13,825	2,790	47,635	4,860	1,210	1,770	7,845	7,375	2,475	255	10,105	43,260	17,510	4,820	65,590	48,075
2012/13	30,980	13,550	3,000	47,535	5,270	835	1,195	7,300	7,130	2,185	250	9,565	43,380	16,570	4,445	64,400	47,820
2013/14	31,120	13,400	3,005	47,520	5,320	635	880	6,840	7,700	2,255	255	10,210	44,140	16,290	4,140	64,570	48,275
2014/15	31,390	13,075	3,065	47,525	5,380	540	560	6,480	7,525	2,255	175	9,955	44,295	15,870	3,800	63,965	48,090
2015/16	31,415	13,500	3,000	47,915	5,065	555	590	6,215	6,930	2,390	150	9,475	43,415	16,450	3,740	63,600	47,150
2016/17	31,230	14,160	2,855	48,240	4,455	450	610	5,515	6,815	2,350	150	9,315	42,505	16,955	3,610	63,070	46,110

Source: Higher Education Statistics Agency (HESA)

Notes

⁽¹⁾ Open University. May include a few NI students who are registered with the OU in GB rather than NI.

To prevent the identification of individuals, figures in the attached table are rounded to the nearest 5, with 0, 1, 2 rounded to 0. Due to rounding, the sum of numbers in each row or column may not match the total shown.

Table 1a: Northern Ireland domiciled students enrolled at UK HEIs by mode of study and location of institution - 2007/08 to 2016/17 (with %)

Mode and Year	Location of Institution							NI HEIs (incl. NI OU)	NI HEIs (incl. NI OU) (%)
	NI	NI %	GB	GB %	OU ⁽¹⁾	OU %	Total		
Full-time									
2007/08	30,225	68.8%	13,720	31.2%	0	0.0%	43,950	30,225	68.8%
2008/09	30,765	69.1%	13,745	30.9%	0	0.0%	44,510	30,765	69.1%
2009/10	31,600	69.4%	13,935	30.6%	0	0.0%	45,540	31,600	69.4%
2010/11	32,015	69.2%	14,255	30.8%	0	0.0%	46,270	32,015	69.2%
2011/12	31,585	67.6%	15,125	32.4%	0	0.0%	46,715	31,585	67.6%
2012/13	31,200	68.1%	14,590	31.9%	0	0.0%	45,790	31,200	68.1%
2013/14	31,760	68.7%	14,485	31.3%	0	0.0%	46,245	31,760	68.7%
2014/15	32,310	69.6%	14,115	30.4%	0	0.0%	46,430	32,310	69.6%
2015/16	32,045	68.6%	14,675	31.4%	0	0.0%	46,720	32,045	68.6%
2016/17	32,055	67.7%	15,265	32.3%	0	0.0%	47,320	32,055	67.7%
Part-time									
2007/08	11,860	64.6%	2,530	13.8%	3,960	21.6%	18,350	15,815	86.2%
2008/09	10,940	61.6%	2,595	14.6%	4,220	23.8%	17,755	15,145	85.3%
2009/10	12,070	63.2%	2,405	12.6%	4,625	24.2%	19,100	16,680	87.3%
2010/11	11,945	62.0%	2,470	12.8%	4,865	25.2%	19,280	16,805	87.1%
2011/12	11,675	61.8%	2,380	12.6%	4,820	25.5%	18,875	16,490	87.4%
2012/13	12,180	65.5%	1,980	10.7%	4,445	23.9%	18,610	16,620	89.3%
2013/14	12,380	67.6%	1,805	9.8%	4,140	22.6%	18,325	16,520	90.1%
2014/15	11,985	68.3%	1,755	10.0%	3,800	21.7%	17,535	15,780	90.0%
2015/16	11,370	67.3%	1,775	10.5%	3,740	22.1%	16,885	15,105	89.5%
2016/17	10,445	66.3%	1,690	10.7%	3,610	22.9%	15,745	14,055	89.3%
Total									
2007/08	42,085	67.6%	16,250	26.1%	3,960	6.4%	62,300	46,040	73.9%
2008/09	41,700	67.0%	16,345	26.2%	4,220	6.8%	62,265	45,910	73.7%
2009/10	43,670	67.6%	16,345	25.3%	4,625	7.2%	64,635	48,285	74.7%
2010/11	43,960	67.1%	16,730	25.5%	4,865	7.4%	65,555	48,820	74.5%
2011/12	43,260	66.0%	17,510	26.7%	4,820	7.3%	65,590	48,075	73.3%
2012/13	43,380	67.4%	16,570	25.7%	4,445	6.9%	64,400	47,820	74.3%
2013/14	44,140	68.4%	16,290	25.2%	4,140	6.4%	64,570	48,275	74.8%
2014/15	44,295	69.2%	15,870	24.8%	3,800	5.9%	63,965	48,090	75.2%
2015/16	43,415	68.3%	16,450	25.9%	3,740	5.9%	63,600	47,150	74.1%
2016/17	42,505	67.4%	16,955	26.9%	3,610	5.7%	63,070	46,110	73.1%

Source: Higher Education Statistics Agency (HESA)

Table 1b: Percentage change of Northern Ireland domiciled students enrolled at UK HEIs in each location by mode of study between 2007/08 and 2016/17

Mode	Location of Institution			
	NI	GB	OU ⁽¹⁾	Total
Full-time	6.1%	11.3%	-	7.7%
Part-time	-11.9%	-33.2%	-8.8%	-14.2%
Total	1.0%	4.3%	-8.8%	1.2%

Source: Higher Education Statistics Agency (HESA)

Table 1c: Percentage change of Northern Ireland domiciled students enrolled at UK HEIs by mode of study and level of study between 2007/08 and 2016/17

Mode and Year	Level of Study			Total
	First Degree	Other Undergraduate	Postgraduate	
Full-time				
2007/08	39,200	1,125	3,620	43,950
2016/17	42,720	455	4,145	47,320
% change	9.0%	-59.5%	14.5%	7.7%
Part-time				
2007/08	5,480	7,600	5,265	18,350
2016/17	5,520	5,055	5,170	15,745
% change	0.7%	-33.5%	-1.8%	-14.2%
Total				
2007/08	44,685	8,725	8,885	62,300
2016/17	48,240	5,515	9,315	63,070
% change	8.0%	-36.8%	4.8%	1.2%

Source: Higher Education Statistics Agency (HESA)

Notes

⁽¹⁾ Open University. May include a few NI students who are registered with the OU in GB rather than NI.

To prevent the identification of individuals, figures in the attached table are rounded to the nearest 5, with 0, 1, 2 rounded to 0. Due to rounding, the sum of numbers in each row or column may not match the total shown.

Table 1d: Percentage change of Northern Ireland domiciled students enrolled at UK HEIs by mode of study and location of institution between 2015/16 and 2016/17

Mode and Year	Location of Institution				
	NI	GB	OU ⁽¹⁾	Total	
Full-time	2015/16	32,045	14,675	0	46,720
	2016/17	32,055	15,265	0	47,320
	% change	0.0%	4.0%	-	1.3%
Part-time	2015/16	11,370	1,775	3,740	16,885
	2016/17	10,445	1,690	3,610	15,745
	% change	-8.1%	-4.8%	-3.4%	-6.7%
Total	2015/16	43,415	16,450	3,740	63,600
	2016/17	42,505	16,955	3,610	63,070
	% change	-2.1%	3.1%	-3.4%	-0.8%

Source: Higher Education Statistics Agency (HESA)

Table 1e: Percentage change in Northern Ireland domiciled students enrolled at UK HEIs by mode of study between 2015/16 and 2016/17 (with %)

Year	Mode of study				
	Full-time	Full-time %	Part-time	Part-time %	Total
2015/16	46,720	73.5%	16,885	26.5%	63,600
2016/17	47,320	75.0%	15,745	25.0%	63,070
% change	1.3%		-6.7%		-0.8%

Source: Higher Education Statistics Agency (HESA)

Table 1f: Percentage change in Northern Ireland domiciled students enrolled at UK HEIs by mode of study and level of study between 2015/16 and 2016/17 (with %)

Mode and Year	Level of Study							
	First Degree	First Degree %	Other Undergraduate	Other Undergraduate %	Postgraduate	Postgraduate %	Total	
Full-time	2015/16	42,045	90.0%	450	1.0%	4,225	9.0%	46,720
	2016/17	42,720	90.3%	455	1.0%	4,145	8.8%	47,320
	% change	1.6%		1.6%		-1.9%		1.3%
Part-time	2015/16	5,870	34.8%	5,765	34.2%	5,250	31.1%	16,885
	2016/17	5,520	35.1%	5,055	32.1%	5,170	32.8%	15,745
	% change	-5.9%		-12.3%		-1.5%		-6.7%
Total	2015/16	47,915	75.3%	6,215	9.8%	9,475	14.9%	63,600
	2016/17	48,240	76.5%	5,515	8.7%	9,315	14.8%	63,070
	% change	0.7%		-11.3%		-1.7%		-0.8%

Source: Higher Education Statistics Agency (HESA)

Notes

⁽¹⁾ Open University. May include a few NI students who are registered with the OU in GB rather than NI.

To prevent the identification of individuals, figures in the attached table are rounded to the nearest 5, with 0, 1, 2 rounded to 0. Due to rounding, the sum of numbers in each row or column may not match the total shown.

Table 2: Northern Ireland domiciled first year students enrolled at UK HEIs by level of study, mode of study and location of institution - 2007/08 to 2016/17

Level and Year	First degree				Other undergraduate				Postgraduate				Total				NI HEIs (incl. NI OU)
	Location of Institution				Location of Institution				Location of Institution				Location of Institution				
	NI	GB	OU ⁽¹⁾	Total	NI	GB	OU ⁽¹⁾	Total	NI	GB	OU ⁽¹⁾	Total	NI	GB	OU ⁽¹⁾	Total	
Full-time																	
2007/08	9,100	3,985	0	13,085	330	235	0	565	1,555	845	0	2,395	10,985	5,065	0	16,050	10,985
2008/09	9,345	3,990	0	13,335	85	205	0	290	1,675	840	0	2,515	11,105	5,030	0	16,135	11,105
2009/10	9,750	3,960	0	13,710	165	200	0	370	1,950	980	0	2,930	11,865	5,140	0	17,010	11,865
2010/11	8,850	4,220	0	13,065	150	225	0	375	1,880	980	0	2,860	10,880	5,420	0	16,300	10,880
2011/12	8,820	4,800	0	13,620	135	210	0	345	1,840	930	0	2,775	10,800	5,940	0	16,740	10,800
2012/13	8,950	3,805	0	12,755	125	100	0	230	1,795	790	0	2,585	10,870	4,700	0	15,570	10,870
2013/14	9,620	4,080	0	13,700	120	115	0	235	1,905	905	0	2,810	11,640	5,100	0	16,740	11,640
2014/15	9,340	4,170	0	13,515	130	95	0	225	1,775	890	0	2,665	11,245	5,155	0	16,400	11,245
2015/16	8,365	4,655	0	13,020	135	120	0	255	1,730	990	0	2,720	10,235	5,765	0	16,000	10,235
2016/17	9,010	4,770	0	13,780	180	80	0	255	1,735	960	0	2,695	10,920	5,810	0	16,730	10,920
Part-time																	
2007/08	685	100	675	1,460	4,455	610	1,130	6,195	1,995	535	140	2,670	7,130	1,250	1,950	10,330	9,080
2008/09	745	95	890	1,730	4,205	670	1,140	6,015	1,780	515	120	2,415	6,730	1,280	2,150	10,160	8,880
2009/10	740	85	955	1,775	4,275	525	1,240	6,040	2,055	620	125	2,800	7,065	1,230	2,320	10,615	9,385
2010/11	710	75	1,015	1,800	4,565	680	1,205	6,445	2,000	515	100	2,615	7,275	1,270	2,320	10,860	9,595
2011/12	705	70	1,020	1,795	4,175	665	1,090	5,930	2,130	505	90	2,725	7,010	1,245	2,200	10,450	9,205
2012/13	785	65	1,245	2,100	4,700	370	775	5,845	2,130	450	115	2,690	7,615	885	2,135	10,635	9,750
2013/14	595	50	920	1,570	4,775	355	545	5,675	2,475	475	105	3,060	7,850	880	1,575	10,305	9,420
2014/15	555	65	1,000	1,625	4,805	300	305	5,410	2,300	495	70	2,865	7,665	860	1,375	9,900	9,040
2015/16	975	65	955	1,995	4,535	275	355	5,165	1,970	540	65	2,575	7,480	875	1,380	9,735	8,855
2016/17	680	40	805	1,525	3,885	230	370	4,485	2,160	515	65	2,740	6,725	785	1,240	8,750	7,960
Total																	
2007/08	9,785	4,085	675	14,550	4,785	845	1,130	6,760	3,550	1,380	140	5,070	18,115	6,310	1,950	26,375	20,065
2008/09	10,090	4,085	890	15,065	4,290	870	1,140	6,300	3,455	1,355	120	4,930	17,835	6,310	2,150	26,295	19,985
2009/10	10,490	4,045	955	15,490	4,440	725	1,240	6,405	4,000	1,600	125	5,730	18,930	6,370	2,320	27,625	21,250
2010/11	9,555	4,295	1,015	14,865	4,715	900	1,205	6,820	3,880	1,490	100	5,475	18,155	6,690	2,320	27,160	20,475
2011/12	9,525	4,870	1,020	15,415	4,310	880	1,090	6,275	3,970	1,440	90	5,500	17,805	7,185	2,200	27,190	20,005
2012/13	9,735	3,875	1,245	14,855	4,825	470	775	6,075	3,925	1,240	115	5,280	18,485	5,585	2,140	26,205	20,620
2013/14	10,215	4,130	920	15,265	4,895	470	545	5,905	4,380	1,380	105	5,870	19,490	5,980	1,575	27,045	21,065
2014/15	9,900	4,235	1,000	15,135	4,935	395	305	5,635	4,075	1,385	70	5,525	18,910	6,015	1,375	26,300	20,285
2015/16	9,340	4,720	955	15,015	4,675	395	355	5,425	3,700	1,525	65	5,295	17,715	6,640	1,380	25,730	19,090
2016/17	9,685	4,815	805	15,300	4,065	310	370	4,740	3,895	1,475	65	5,435	17,645	6,595	1,240	25,480	18,880

Source: Higher Education Statistics Agency (HESA)

Notes

⁽¹⁾ Open University. May include a few NI students who are registered with the OU in GB rather than NI.

To prevent the identification of individuals, figures in the attached table are rounded to the nearest 5, with 0, 1, 2 rounded to 0. Due to rounding, the sum of numbers in each row or column may not match the total shown.

Table 2a: Northern Ireland domiciled first year undergraduate students enrolled at UK HEIs by mode of study and location of institution - 2007/08 to 2016/17 (with %)

Mode and Year	Location of Institution							NI HEIs (incl. NI OU)	NI HEIs (incl. NI OU) (%)
	NI	NI %	GB	GB %	OU ⁽¹⁾	OU %	Total		
Full-time									
2007/08	9,430	69.1%	4,220	30.9%	0	0.0%	13,650	9,430	69.1%
2008/09	9,430	69.2%	4,190	30.8%	0	0.0%	13,620	9,430	69.2%
2009/10	9,915	70.4%	4,160	29.6%	0	0.0%	14,080	9,915	70.4%
2010/11	9,000	66.9%	4,445	33.1%	0	0.0%	13,440	9,000	66.9%
2011/12	8,960	64.1%	5,010	35.9%	0	0.0%	13,970	8,960	64.1%
2012/13	9,075	69.9%	3,910	30.1%	0	0.0%	12,985	9,075	69.9%
2013/14	9,740	69.9%	4,195	30.1%	0	0.0%	13,930	9,740	69.9%
2014/15	9,470	69.0%	4,265	31.0%	0	0.0%	13,735	9,470	69.0%
2015/16	8,505	64.0%	4,775	36.0%	0	0.0%	13,280	8,505	64.0%
2016/17	9,185	65.5%	4,850	34.5%	0	0.0%	14,035	9,185	65.5%
Part-time									
2007/08	5,135	67.1%	710	9.3%	1,810	23.6%	7,655	6,945	90.7%
2008/09	4,950	63.9%	765	9.9%	2,030	26.2%	7,745	6,980	90.1%
2009/10	5,010	64.1%	610	7.8%	2,195	28.1%	7,815	7,205	92.2%
2010/11	5,275	64.0%	755	9.1%	2,220	26.9%	8,245	7,490	90.9%
2011/12	4,880	63.2%	740	9.6%	2,110	27.3%	7,725	6,985	90.4%
2012/13	5,485	69.0%	435	5.5%	2,025	25.5%	7,945	7,510	94.5%
2013/14	5,370	74.2%	405	5.6%	1,465	20.2%	7,240	6,840	94.4%
2014/15	5,365	76.2%	365	5.2%	1,305	18.5%	7,035	6,670	94.8%
2015/16	5,510	77.0%	340	4.7%	1,310	18.3%	7,160	6,820	95.3%
2016/17	4,565	76.0%	270	4.5%	1,170	19.5%	6,005	5,735	95.5%
Total									
2007/08	14,570	68.4%	4,930	23.1%	1,810	8.5%	21,310	16,375	76.9%
2008/09	14,385	67.3%	4,955	23.2%	2,030	9.5%	21,365	16,410	76.8%
2009/10	14,930	68.2%	4,770	21.8%	2,195	10.0%	21,895	17,125	78.2%
2010/11	14,270	65.8%	5,195	24.0%	2,220	10.2%	21,685	16,490	76.0%
2011/12	13,835	63.8%	5,750	26.5%	2,110	9.7%	21,690	15,945	73.5%
2012/13	14,560	69.6%	4,345	20.8%	2,025	9.7%	20,930	16,585	79.2%
2013/14	15,110	71.4%	4,600	21.7%	1,465	6.9%	21,175	16,575	78.3%
2014/15	14,835	71.4%	4,630	22.3%	1,305	6.3%	20,770	16,140	77.7%
2015/16	14,015	68.6%	5,115	25.0%	1,310	6.4%	20,440	15,325	75.0%
2016/17	13,750	68.6%	5,120	25.6%	1,170	5.8%	20,045	14,920	74.4%

Source: Higher Education Statistics Agency (HESA)

Table 2b: Percentage change of Northern Ireland domiciled first year undergraduate students enrolled at UK HEIs in each location by mode of study between 2007/08 and 2016/17

Mode	Location of Institution			
	NI	GB	OU ⁽¹⁾	Total
Full-time	-2.6%	14.9%	-	2.8%
Part-time	-11.2%	-61.7%	-35.2%	-21.5%
Total	-5.6%	3.9%	-35.2%	-5.9%

Source: Higher Education Statistics Agency (HESA)

Table 2c: Percentage change of Northern Ireland domiciled first year undergraduate students enrolled at UK HEIs in each location by mode of study between 2015/16 and 2016/17

Mode	Location of Institution			
	NI	GB	OU ⁽¹⁾	Total
Full-time	8.0%	1.6%	-	5.7%
Part-time	-17.2%	-19.8%	-10.6%	-16.1%
Total	-1.9%	0.2%	-10.6%	-1.9%

Source: Higher Education Statistics Agency (HESA)

Notes

⁽¹⁾ Open University. May include a few NI students who are registered with the OU in GB rather than NI.

To prevent the identification of individuals, figures in the attached table are rounded to the nearest 5, with 0, 1, 2 rounded to 0. Due to rounding, the sum of numbers in each row or column may not match the total shown.

Table 3: Northern Ireland domiciled students enrolled at UK HEIs by mode of study, level of study, location of institution and gender - 2016/17

Level	Mode	Gender	First Year Students						All Students							
			Location of Institution						Location of Institution							
			NI	England	OU ⁽¹⁾	Scotland	Wales	Total	NI	England	OU ⁽¹⁾	Scotland	Wales	Total		
First Degree	Full-time	Male	4,045	1,495	0	405	85	6,025	13,050	4,135	0	1,435	225	18,845		
		Female	4,965	2,095	0	600	90	7,750	15,770	5,680	0	2,155	270	23,875		
		Other	0	0	0	0	0	0	0	5	0	0	0	5		
	Part-time	Total	9,010	3,590	0	1005	175	13,780	28,825	9,815	0	3,590	490	42,720		
		Male	305	25	370	0	0	700	1,170	115	1,310	35	5	2,630		
		Female	375	15	435	0	0	820	1,235	80	1,540	25	0	2,890		
	All First Degree	Total	680	40	805	0	0	1525	2,405	195	2,855	60	5	5,520		
		Male	4,345	1,520	370	405	85	6,725	14,220	4,250	1,310	1,465	225	21,475		
		Female	5,340	2,110	435	600	90	8,575	17,010	5,760	1,540	2,180	270	26,765		
		Other	0	0	0	0	0	0	0	5	0	0	0	5		
Total			9,685	3,630	805	1010	175	15,300	31,230	10,015	2,855	3,650	495	48,240		
Other Undergraduate	Full-time	Male	60	30	0	0	0	90	135	50	0	5	5	190		
		Female	120	40	0	0	5	165	195	65	0	0	5	265		
		Total	180	70	0	5	5	255	325	115	0	5	10	455		
	Part-time	Male	1,290	95	115	15	0	1,515	1,360	150	225	25	0	1,765		
		Female	2,595	85	255	35	0	2,970	2,770	100	380	35	5	3,295		
		Total	3,885	180	370	50	5	4,485	4,130	255	610	60	5	5,055		
	All Other Undergraduate	Male	1,350	125	115	15	0	1,605	1,495	200	225	25	5	1,955		
		Female	2,715	125	255	35	5	3,135	2,960	165	380	40	10	3,560		
		Total	4,065	250	370	50	5	4,740	4,455	370	610	65	15	5,515		
		Total			4,100	1,525	0	405	85	6,115	13,185	4,185	0	1,435	225	19,035
All Undergraduate	Full-time	Female	5,085	2,135	0	605	95	7,920	15,965	5,745	0	2,155	275	24,140		
		Total	9,185	3,660	0	1,010	180	14,035	29,150	9,930	0	3,595	500	43,175		
		Male	1,595	120	485	20	0	2,215	2,530	265	1,540	55	5	4,395		
	Part-time	Female	2,970	100	685	35	0	3,790	4,005	185	1,925	65	5	6,180		
		Total	4,565	220	1,170	50	5	6,005	6,535	450	3,460	120	10	10,575		
		Male	5,695	1,645	485	425	85	8,335	15,715	4,450	1,540	1,495	230	23,430		
	All Undergraduate	Female	8,055	2,235	685	635	95	11,710	19,970	5,930	1,925	2,220	280	30,320		
		Total	13,750	3,880	1,170	1,060	185	20,045	35,685	10,380	3,460	3,715	510	53,755		
		Total			780	330	0	50	5	1,165	1,325	455	0	75	15	1,865
		Postgraduate	Full-time	Female	950	465	0	105	10	1,530	1,580	555	0	130	15	2,280
Total	1,735			790	0	150	20	2,695	2,905	1010	0	200	30	4,145		
Male	680			145	40	45	10	920	1,375	345	90	120	25	1,955		
Part-time	Female		1,480	245	25	55	15	1,820	2,535	445	60	145	30	3,215		
	Total		2,160	390	65	100	25	2,740	3,910	790	150	265	55	5,170		
	Male		1,465	470	40	90	20	2,085	2,700	795	90	195	35	3,815		
All Postgraduate	Female		2,430	710	25	160	25	3,350	4,115	1000	60	270	50	5,495		
	Total		3,895	1,180	65	250	45	5,435	6,815	1,795	150	465	85	9,315		
	Total			4,885	1,850	0	455	90	7,280	14,510	4,640	0	1,510	240	20,900	
	All Students		Full-time	Female	6,035	2,600	0	705	105	9,450	17,545	6,300	0	2,285	290	26,420
Other		0		0	0	0	0	0	0	5	0	0	0	5		
Total		10,920		4,450	0	1,160	200	16,730	32,055	10,940	0	3,795	530	47,320		
Part-time		Male	2,275	260	525	60	15	3,135	3,905	610	1,625	175	30	6,350		
		Female	4,450	345	710	90	15	5,610	6,540	630	1,985	205	40	9,400		
		Total	6,725	605	1,240	150	30	8,750	10,445	1,240	3,610	385	65	15,745		
All Students		Male	7,160	2,115	525	515	105	10,420	18,415	5,250	1,625	1,685	270	27,245		
		Female	10,485	2,945	710	795	125	15,060	24,085	6,930	1,985	2,490	330	35,820		
		Other	0	0	0	0	0	0	0	5	0	0	0	5		
		Total	17,645	5,060	1,240	1,310	230	25,480	42,505	12,180	3,610	4,180	595	63,070		

Source: Higher Education Statistics Agency (HESA)

Notes

⁽¹⁾ Open University. May include a few NI students who are registered with the OU in GB rather than NI.

To prevent the identification of individuals, figures in the attached table are rounded to the nearest 5, with 0, 1, 2 rounded to 0. Due to rounding, the sum of numbers in each row or column may not match the total shown.

Table 3a: Northern Ireland domiciled students enrolled at UK HEIs by mode of study and gender - 2007/08 and 2016/17 (with %)

Mode and Year	Gender					
	Male	Male %	Female	Female %	Total	
Full-time	2007/08	18,475	42.0%	25,475	58.0%	43,950
	2016/17	20,900	44.2%	26,420	55.8%	47,320
Part-time	2007/08	7,100	38.7%	11,250	61.3%	18,350
	2016/17	6,350	40.3%	9,400	59.7%	15,745
Total	2007/08	25,575	41.0%	36,725	58.9%	62,300
	2016/17	27,245	43.2%	35,820	56.8%	63,065

Source: Higher Education Statistics Agency (HESA)

Table 3b: Northern Ireland domiciled students enrolled at UK HEIs by gender and mode of study - 2007/08 and 2016/17 (with %)

Gender and Year	Mode of Study				Total	
	Full-time	Full-time %	Part-time	Part-time %		
Male	2007/08	18,475	72.2%	7,100	27.8%	25,575
	2016/17	20,900	76.7%	6,350	23.3%	27,245
Female	2007/08	25,475	69.4%	11,250	30.6%	36,725
	2016/17	26,420	73.8%	9,400	26.2%	35,820
Total	2007/08	43,950	70.5%	18,350	29.5%	62,300
	2016/17	47,320	75.0%	15,745	25.0%	63,065

Source: Higher Education Statistics Agency (HESA)

Table 3c: Northern Ireland domiciled students enrolled at UK HEIs by gender and level of study - 2016/17 (with %)

Gender	Level of Study						Total
	First Degree	First Degree %	Other Undergraduate	Other Undergraduate %	Postgraduate	Postgraduate %	
Male	21,475	78.8%	1,955	7.2%	3,815	14.0%	27,245
Female	26,765	74.7%	3,560	9.9%	5,495	15.3%	35,820
Total	48,240	76.5%	5,515	8.7%	9,315	14.8%	63,070

Source: Higher Education Statistics Agency (HESA)

Table 3d: Northern Ireland domiciled students enrolled at UK HEIs by mode of study, gender and location of institution - 2016/17 (with %)

Mode	Gender	Location of Institution						Total
		NI	NI %	GB	GB %	OU ⁽¹⁾	OU %	
Full-time	Male	14,510	69.4%	6,390	30.6%	0	0.0%	20,900
	Female	17,545	66.4%	8,875	33.6%	0	0.0%	26,420
	Total	32,055	67.7%	15,265	32.3%	0	0.0%	47,320
Part-time	Male	3,905	61.5%	815	12.8%	1,625	25.6%	6,350
	Female	6,540	69.6%	875	9.3%	1,985	21.1%	9,400
	Total	10,445	66.3%	1,690	10.7%	3,610	22.9%	15,745
All Students	Male	18,415	67.6%	7,205	26.4%	1,625	6.0%	27,245
	Female	24,085	67.2%	9,745	27.2%	1,985	5.5%	35,820
	Total	42,505	67.4%	16,955	26.9%	3,610	5.7%	63,070

Source: Higher Education Statistics Agency (HESA)

Notes

⁽¹⁾ Open University. May include a few NI students who are registered with the OU in GB rather than NI.

To prevent the identification of individuals, figures in the attached table are rounded to the nearest 5, with 0, 1, 2 rounded to 0. Due to rounding, the sum of numbers in each row or column may not match the total shown.

Table 4: Northern Ireland domiciled students enrolled at UK HEIs by level of study, mode of study, gender and age - 2016/17

Level	Age	First Year Students									All Students										
		Full-time			Part-time			Full-time & Part-time			Full-time				Part-time			Full-time & Part-time			
		Male	Female	Total	Male	Female	Total	Male	Female	Total	Male	Female	Other	Total	Male	Female	Total	Male	Female	Other	Total
First Degree	Under 21	4,975	6,390	11,365	120	150	265	5,090	6,540	11,635	10,845	14,545	5	25,395	360	320	675	11,205	14,865	5	26,070
	21 - 24	720	755	1,480	165	160	325	885	915	1,805	6,750	7,290	0	14,040	570	590	1,160	7,320	7,875	0	15,200
	25 and over	330	605	935	420	510	930	750	1,115	1,865	1,250	2,040	0	3,290	1,700	1,980	3,680	2,950	4,020	0	6,970
	Total	6,025	7,750	13,780	700	820	1,525	6,725	8,575	15,300	18,845	23,875	5	42,720	2,630	2,890	5,520	21,475	26,765	5	48,240
Other Undergraduate	Under 21	65	115	180	75	135	205	140	250	385	130	180	0	310	80	160	240	210	340	0	545
	21 - 24	20	25	40	85	175	260	105	195	300	50	50	0	100	110	205	320	160	255	0	420
	25 and over	10	25	35	1,360	2,660	4,020	1,365	2,690	4,055	10	35	0	45	1,575	2,925	4,500	1,585	2,960	0	4,545
	Total	90	165	255	1,515	2,970	4,485	1,605	3,135	4,740	190	265	0	455	1,765	3,295	5,055	1,955	3,560	0	5,515
All Undergraduate	Under 21	5,040	6,505	11,545	190	280	475	5,230	6,790	12,020	10,975	14,725	5	25,705	435	480	915	11,410	15,205	5	26,620
	21 - 24	740	780	1,520	250	335	585	990	1,115	2,105	6,800	7,340	0	14,140	685	795	1,480	7,485	8,135	0	15,620
	25 and over	340	630	970	1,775	3,175	4,950	2,115	3,805	5,920	1,260	2,075	0	3,335	3,275	4,905	8,180	4,535	6,985	0	11,515
	Total	6,115	7,920	14,035	2,215	3,790	6,005	8,335	11,710	20,045	19,035	24,140	5	43,175	4,395	6,180	10,575	23,430	30,320	5	53,755
Postgraduate	Under 21	0	0	0	0	0	0	0	0	5	0	0	0	0	10	10	0	0	10	0	10
	21 - 24	750	1,025	1,775	135	240	380	885	1,270	2,155	1,045	1,335	0	2,380	205	350	555	1,250	1,685	0	2,935
	25 and over	415	505	920	785	1,580	2,360	1,200	2,080	3,280	820	945	0	1,765	1,745	2,860	4,605	2,565	3,805	0	6,365
	Total	1,165	1,530	2,695	920	1,820	2,740	2,085	3,350	5,435	1,865	2,280	0	4,145	1,955	3,215	5,170	3,815	5,495	0	9,315
All Students	Under 21	5,040	6,510	11,545	195	285	475	5,230	6,790	12,025	10,975	14,725	5	25,705	440	490	925	11,410	15,215	5	26,630
	21 - 24	1,490	1,805	3,295	385	575	960	1,875	2,380	4,255	7,845	8,675	0	16,520	890	1,145	2,035	8,735	9,820	0	18,555
	25 and over	755	1,135	1,890	2,560	4,750	7,310	3,315	5,885	9,200	2,080	3,020	0	5,100	5,020	7,765	12,785	7,100	10,785	0	17,885
	Total	7,280	9,450	16,730	3,135	5,610	8,750	10,420	15,060	25,480	20,900	26,420	5	47,320	6,350	9,400	15,745	27,245	35,820	5	63,070

Source: Higher Education Statistics Agency (HESA)

To prevent the identification of individuals, figures in the attached table are rounded to the nearest 5, with 0, 1, 2 rounded to 0. Due to rounding, the sum of numbers in each row or column may not match the total shown.

Table 4a: Northern Ireland domiciled students enrolled at UK HEIs by level of study and age group - 2016/17 (with %)

Level	Age group						Total
	Under 21	Under 21 %	21 - 24	21-24 %	25 and over	25 and over %	
First Degree	26,070	54.0%	15,200	31.5%	6,970	14.4%	48,240
Other Undergraduate	545	9.9%	420	7.6%	4,545	82.5%	5,515
All Undergraduate	26,620	49.5%	15,620	29.1%	11,515	21.4%	53,755
Postgraduate	10	0.1%	2,935	31.5%	6,365	68.4%	9,315
All Students	26,630	42.2%	18,555	29.4%	17,885	28.4%	63,070

Source: Higher Education Statistics Agency (HESA)

Table 4b: Northern Ireland domiciled students enrolled at UK HEIs by age group, level and mode of study - 2016/17

Age	Level of study														
	First Degree			Other Undergraduate			All Undergraduate			Postgraduate			Total		
	Full-time	Part-time	Total	Full-time	Part-time	Total	Full-time	Part-time	Total	Full-time	Part-time	Total	Full-time	Part-time	Total
Under 21	25,395	675	26,070	310	240	545	25,705	915	26,620	0	10	10	25,705	925	26,630
21 - 24	14,040	1,160	15,200	100	320	420	14,140	1,480	15,620	2,380	555	2,935	16,520	2,035	18,555
25 and over	3,290	3,680	6,970	45	4,500	4,545	3,335	8,180	11,515	1,765	4,605	6,365	5,100	12,785	17,885
Total	42,720	5,520	48,240	455	5,055	5,515	43,175	10,575	53,755	4,145	5,170	9,315	47,320	15,745	63,070

Source: Higher Education Statistics Agency (HESA)

Table 4c: Proportion of Northern Ireland domiciled students enrolled at UK HEIs by age group, level and mode of study - 2016/17

Age	Level of study														
	First Degree			Other Undergraduate			All Undergraduate			Postgraduate			Total		
	Full-time	Part-time	Total	Full-time	Part-time	Total	Full-time	Part-time	Total	Full-time	Part-time	Total	Full-time	Part-time	Total
Under 21	95.4%	2.5%	97.9%	1.2%	0.9%	2.1%	96.5%	3.4%	100.0%	0.0%	0.0%	0.0%	96.5%	3.5%	26,630
21 - 24	75.7%	6.3%	81.9%	0.5%	1.7%	2.3%	76.2%	8.0%	84.2%	12.8%	3.0%	15.8%	89.0%	11.0%	18,555
25 and over	18.4%	20.6%	39.0%	0.3%	25.2%	25.4%	18.6%	45.8%	64.4%	9.9%	25.7%	35.6%	28.5%	71.5%	17,885
Total	67.7%	8.8%	76.5%	0.7%	8.0%	8.7%	68.5%	16.8%	85.2%	6.6%	8.2%	14.8%	75.0%	25.0%	63,070

Source: Higher Education Statistics Agency (HESA)

Notes
To prevent the identification of individuals, figures in the attached table are rounded to the nearest 5, with 0, 1, 2 rounded to 0. Due to rounding, the sum of numbers in each row or column may not match the total shown.

Table 5: Northern Ireland domiciled students enrolled at UK HEIs by year of study and gender - 2016/17

(a) by region of Institution

Region of Institution	First Year Students			All Students			
	Male	Female	Total	Male	Female	Other	Total
Northern Ireland	7,160	10,485	17,645	18,415	24,085	0	42,505
North West	850	1,275	2,130	1,980	2,935	0	4,920
Scotland	515	795	1,310	1,685	2,490	0	4,180
North East	230	320	550	640	830	0	1,470
London	190	290	480	515	635	0	1,155
South East	180	205	385	440	515	0	955
South West	165	180	345	425	480	0	905
Yorkshire and The Humber	165	215	375	360	495	0	855
West Midlands	130	200	330	330	400	0	725
East Midlands	120	120	240	310	315	0	625
Wales	105	125	230	270	330	0	595
East of England	85	135	220	250	320	0	565
The Open University	525	710	1,240	1,625	1,985	0	3,610
Total	10,420	15,060	25,480	27,245	35,820	5	63,070

(b) by Institution (top 20 only)

Institution	First Year Students			All Students			
	Male	Female	Total	Male	Female	Other	Total
Ulster University	3,505	4,630	8,135	9,335	11,370	0	20,705
Queen's University Belfast	3,470	5,225	8,700	8,510	10,875	0	19,385
The Open University	525	710	1,240	1,625	1,985	0	3,610
Liverpool John Moores University	330	445	775	745	1,030	0	1,775
Stranmillis University College	85	430	520	275	1,170	0	1,445
St Mary's University College	95	195	290	295	675	0	975
The University of Dundee	70	155	225	245	475	0	720
The University of Glasgow	75	110	185	275	400	0	675
University of Northumbria at Newcastle	90	165	255	260	385	0	650
Liverpool Hope University	80	190	270	180	425	0	605
Newcastle University	75	90	170	215	265	0	480
The University of Edinburgh	60	85	150	210	265	0	480
The University of Liverpool	70	90	160	175	300	0	470
The University of Manchester	65	95	160	195	275	0	470
The Manchester Metropolitan University	65	100	165	185	250	0	435
Heriot-Watt University	75	60	135	235	180	0	415
The University of Stirling	40	80	120	155	255	0	410
Edinburgh Napier University	40	70	110	115	205	0	320
University of Cumbria	80	105	185	145	170	0	320
Edge Hill University	30	95	120	55	165	0	220
All Others	1,485	1,930	3,415	3,815	4,695	5	8,515
Total	10,420	15,060	25,480	27,245	35,820	5	63,070

Source: Higher Education Statistics Agency (HESA)

To prevent the identification of individuals, figures in the attached table are rounded to the nearest 5, with 0, 1, 2 rounded to 0. Due to rounding, the sum of numbers in each row or column may not match the total shown.

Table 6: Northern Ireland domiciled students enrolled at UK HEIs by mode of study, MDM quintile, level of study and gender - 2016/17

Mode of study	Multiple Deprivation Measure Quintile (2017)	Level of study													
		First degree				Other undergraduate			Postgraduate			Total			
		Male	Female	Other	Total	Male	Female	Total	Male	Female	Total	Male	Female	Other	Total
Full-time	Quintile 1 - Most deprived	2,405	3,235	0	5,640	20	45	70	205	275	480	2,630	3,555	0	6,190
	Quintile 2	3,390	4,475	0	7,865	30	50	80	260	390	650	3,685	4,915	0	8,600
	Quintile 3	3,785	5,200	0	8,985	40	60	100	330	425	755	4,150	5,685	0	9,840
	Quintile 4	4,450	5,495	0	9,945	50	60	115	440	550	990	4,940	6,105	0	11,045
	Quintile 5 - Least deprived	4,805	5,455	0	10,265	50	45	95	610	625	1,240	5,465	6,130	0	11,600
	Total	18,835	23,860	5	42,700	190	265	455	1,845	2,270	4,115	20,870	26,395	5	47,270
Part-time	Quintile 1 - Most deprived	445	545	0	990	205	375	575	200	335	540	850	1,255	0	2,105
	Quintile 2	505	645	0	1,150	205	460	665	285	530	815	995	1,630	0	2,625
	Quintile 3	480	555	0	1,030	220	515	735	360	650	1,010	1,055	1,720	0	2,775
	Quintile 4	590	565	0	1,160	400	710	1,110	495	775	1,270	1,485	2,055	0	3,540
	Quintile 5 - Least deprived	610	575	0	1,185	730	1,225	1,960	600	900	1,500	1,940	2,700	0	4,645
	Total	2,630	2,885	0	5,515	1,760	3,285	5,045	1,940	3,190	5,135	6,330	9,360	0	15,690
Total	Quintile 1 - Most deprived	2,855	3,775	0	6,630	225	420	645	405	610	1,020	3,485	4,810	0	8,295
	Quintile 2	3,895	5,120	0	9,015	240	505	745	545	920	1,465	4,680	6,545	0	11,225
	Quintile 3	4,265	5,755	0	10,015	255	575	830	690	1,080	1,770	5,210	7,410	0	12,615
	Quintile 4	5,040	6,060	0	11,100	450	775	1,225	930	1,325	2,255	6,425	8,160	0	14,585
	Quintile 5 - Least deprived	5,415	6,035	0	11,450	780	1,275	2,055	1,215	1,525	2,740	7,410	8,830	0	16,240
	Total	21,465	26,745	5	48,210	1,950	3,550	5,500	3,785	5,460	9,250	27,205	35,755	5	62,960

Source: Higher Education Statistics Agency (HESA)

To prevent the identification of individuals, figures in the attached table are rounded to the nearest 5, with 0, 1, 2 rounded to 0.

Due to rounding, the sum of numbers in each row or column may not match the total shown.

Note: In 108 cases the postcode was unknown and therefore no MDM Quintile could be assigned.

Table 6a: Northern Ireland domiciled students enrolled at UK HEIs by mode of study and MDM quintile - 2016/17 (with %)

Mode of study	Multiple Deprivation Measure Quintile 2017										
	Quintile 1 - Most deprived	Quintile 1 - Most deprived %	Quintile 2	Quintile 2 %	Quintile 3	Quintile 3 %	Quintile 4	Quintile 4 %	Quintile 5 - Least deprived	Quintile 5 - Least deprived %	Total
Full-time	6,190	13.1%	8,600	18.2%	9,840	20.8%	11,045	23.4%	11,600	24.5%	47,270
Part-time	2,105	13.4%	2,625	16.7%	2,775	17.7%	3,540	22.6%	4,645	29.6%	15,690
Total	8,295	13.2%	11,225	17.8%	12,615	20.0%	14,585	23.2%	16,240	25.8%	62,960

Source: Higher Education Statistics Agency (HESA)

To prevent the identification of individuals, figures in the attached table are rounded to the nearest 5, with 0, 1, 2 rounded to 0. Due to rounding, the sum of numbers in each row or column may not match the total shown.

Note: In 108 cases the postcode was unknown and therefore no MDM Quintile could be assigned.

Table 7: Northern Ireland domiciled students enrolled at UK HEIs by mode of study, gender and subject area - 2016/17

Subject Area	First Year Students									All Students										
	Full-time			Part-time			Full-time & Part-time			Full-time				Part-time			Full-time & Part-time			
	Male	Female	Total	Male	Female	Total	Male	Female	Total	Male	Female	Other	Total	Male	Female	Total	Male	Female	Other	Total
Medicine & dentistry	190	285	475	50	95	145	245	380	620	895	1,355	0	2,250	125	170	295	1,020	1,525	0	2,540
Subjects allied to medicine	440	1,935	2,380	240	1,340	1,580	680	3,275	3,960	1,255	5,545	0	6,800	415	1,880	2,295	1,670	7,425	0	9,095
Biological sciences	650	810	1,460	95	190	285	750	1,000	1,745	1,685	2,270	0	3,960	340	520	855	2,025	2,790	0	4,815
Veterinary science	15	20	35	5	5	10	20	25	45	50	100	0	150	5	10	15	55	110	0	165
Agriculture & related subjects	75	145	220	50	50	95	125	195	315	215	415	0	635	75	85	155	290	500	0	790
Physical sciences	330	270	600	40	20	60	370	290	660	1,035	800	0	1,835	155	95	250	1,190	895	0	2,085
Mathematical sciences	135	90	225	20	15	30	155	105	255	435	300	0	735	100	50	150	535	350	0	880
Computer science	1,075	325	1,400	175	40	215	1,250	365	1,615	3,105	1,035	0	4,135	635	120	755	3,740	1,150	0	4,890
Engineering & technology	810	225	1,030	115	15	130	920	240	1,160	2,835	705	0	3,540	445	60	505	3,280	765	0	4,045
Architecture, building & planning	340	125	460	110	70	180	450	190	640	930	315	0	1,245	235	115	350	1,160	430	0	1,595
Social studies	545	940	1,490	195	535	730	745	1,475	2,220	1,430	2,435	0	3,870	455	1,075	1,530	1,885	3,510	0	5,400
Law	310	525	835	60	90	150	375	615	990	740	1,320	0	2,060	190	270	460	925	1,595	0	2,520
Business & administrative studies	1,010	1,005	2,015	335	365	695	1,340	1,370	2,710	2,785	2,905	0	5,685	840	875	1,715	3,625	3,780	0	7,405
Mass communications & documentation	180	255	435	15	30	40	195	280	475	455	645	0	1,100	35	70	105	490	720	0	1,210
Languages	130	420	555	60	90	145	190	510	700	500	1,390	0	1,890	170	265	440	675	1,655	0	2,330
Historical & philosophical studies	260	240	500	45	40	85	300	280	585	745	645	0	1,390	175	130	310	925	775	0	1,700
Creative arts & design	420	665	1,080	30	45	75	450	710	1,160	1,135	1,870	0	3,010	95	120	215	1,230	1,995	0	3,225
Education	365	1,160	1,525	1,225	2,205	3,430	1,590	3,370	4,955	665	2,345	0	3,010	1,400	2,840	4,240	2,065	5,185	0	7,245
Combined	0	10	10	275	380	660	275	390	665	5	20	0	20	465	645	1,105	465	665	0	1,130
Total	7,280	9,450	16,730	3,135	5,610	8,750	10,420	15,060	25,480	20,900	26,420	5	47,320	6,350	9,400	15,745	27,245	35,820	5	63,070

Source: Higher Education Statistics Agency (HESA)

To prevent the identification of individuals, figures in the attached table are rounded to the nearest 5, with 0, 1, 2 rounded to 0. Due to rounding, the sum of numbers in each row or column may not match the total shown.

Table 7a: Northern Ireland domiciled students enrolled at UK HEIs by gender and STEM - 2016/17 (with %)

Gender	STEM category						Total
	Broad STEM	Broad STEM%	Narrow STEM	Narrow STEM%	Non STEM	Non STEM%	
Male	14,960	54.9%	10,765	39.5%	12,285	45.1%	27,245
Female	15,945	44.5%	5,955	16.6%	19,875	55.5%	35,820
Total	30,905	49.0%	16,720	26.5%	32,160	51.0%	63,070

Source: Higher Education Statistics Agency (HESA)

Table 7b: Northern Ireland domiciled students enrolled at UK HEIs by mode of study and STEM - 2016/17 (with %)

Mode	STEM category						Total
	Broad STEM	Broad STEM%	Narrow STEM	Narrow STEM%	Non STEM	Non STEM%	
Full-time	25,285	53.4%	14,205	30.0%	22,040	46.6%	47,320
Part-time	5,625	35.7%	2,515	16.0%	10,125	64.3%	15,745
Total	30,905	49.0%	16,720	26.5%	32,160	51.0%	63,070

Source: Higher Education Statistics Agency (HESA)

Table 7c: Northern Ireland domiciled students enrolled at UK HEIs by subject area and gender - 2016/17 (with %)

Subject Area	All Students							
	Male	Male %	Female	Female %	Other	Other %	Total	Total %
Subjects allied to medicine	1,670	18.4%	7,425	81.6%	0	0.0%	9,095	14.4%
Business & administrative studies	3,625	48.9%	3,780	51.1%	0	0.0%	7,405	11.7%
Education	2,065	28.5%	5,185	71.5%	0	0.0%	7,245	11.5%
Social studies	1,885	35.0%	3,510	65.0%	0	0.0%	5,400	8.6%
Computer science	3,740	76.4%	1,150	23.6%	0	0.0%	4,890	7.8%
Biological sciences	2,025	42.0%	2,790	58.0%	0	0.0%	4,815	7.6%
Engineering & technology	3,280	81.1%	765	18.9%	0	0.0%	4,045	6.4%
Creative arts & design	1,230	38.1%	1,995	61.8%	0	0.0%	3,225	5.1%
Medicine & dentistry	1,020	40.1%	1,525	59.9%	0	0.0%	2,540	4.0%
Law	925	36.7%	1,595	63.3%	0	0.0%	2,520	4.0%
Languages	675	28.9%	1,655	71.1%	0	0.0%	2,330	3.7%
Physical sciences	1,190	57.0%	895	43.0%	0	0.0%	2,085	3.3%
Historical & philosophical studies	925	54.4%	775	45.6%	0	0.0%	1,700	2.7%
Architecture, building & planning	1,160	72.9%	430	27.1%	0	0.1%	1,595	2.5%
Mass communications & documentation	490	40.5%	720	59.5%	0	0.0%	1,210	1.9%
Combined	465	41.4%	665	58.7%	0	0.0%	1,130	1.8%
Mathematical sciences	535	60.7%	350	39.5%	0	0.0%	880	1.4%
Agriculture & related subjects	290	36.7%	500	63.3%	0	0.0%	790	1.3%
Veterinary science	55	32.9%	110	67.1%	0	0.0%	165	0.3%
Total	27,245	43.2%	35,820	56.8%	5	0.0%	63,070	100.0%

Source: Higher Education Statistics Agency (HESA)

Notes

To prevent the identification of individuals, figures in the attached table are rounded to the nearest 5, with 0, 1, 2 rounded to 0. Due to rounding, the sum of numbers in each row or column may not match the total shown.

Broad STEM includes the following subject areas: Medicine & dentistry; Subjects allied to medicine; Biological sciences; Veterinary science; Agriculture & related subjects; Physical sciences; Mathematical sciences; Computer science; Engineering & technology; and Architecture, building & planning.

Narrow STEM is a subset of Broad STEM and includes the following subject areas: Biological sciences; Physical sciences; Mathematical sciences; Computer science; and Engineering & technology.

Table 8: Enrolments at Northern Ireland HEIs including OU by level of study, mode of study and domicile - 2007/08 to 2016/17

Mode and Year	First Degree						Other Undergraduate						Postgraduate						Total						
	Country of domicile						Country of domicile						Country of domicile						Country of domicile						
	NI	GB	RoI	Other EU	Non EU	Total	NI	GB	RoI	Other EU	Non EU	Total	NI	GB	RoI	Other EU	Non EU	Total	NI	GB	RoI	Other EU	Non EU	Total	
Full-time																									
2007/08	27,075	365	1,190	95	435	29,155	720	5	20	30	20	795	2,430	125	415	185	635	3,790	30,225	500	1,625	305	1,085	33,740	
2008/09	27,505	445	1,045	90	400	29,485	230	0	10	5	70	320	3,030	165	550	200	800	4,745	30,765	615	1,605	295	1,270	34,545	
2009/10	28,200	520	950	95	415	30,180	245	0	15	25	55	335	3,160	140	715	175	815	5,005	31,600	665	1,675	295	1,285	35,520	
2010/11	28,230	620	1,015	90	485	30,440	230	0	5	0	155	390	3,555	160	895	170	910	5,690	32,015	780	1,915	265	1,550	36,520	
2011/12	28,255	710	950	90	1,370	31,375	255	0	5	5	175	445	3,075	130	700	145	1,115	5,165	31,585	840	1,655	235	2,665	36,985	
2012/13	28,100	760	935	95	1,535	31,435	250	5	5	5	265	525	2,850	135	545	140	1,220	4,885	31,200	900	1,485	240	3,025	36,845	
2013/14	28,505	855	860	115	1,495	31,825	300	10	0	10	360	680	2,950	190	495	150	1,215	5,000	31,760	1,050	1,355	270	3,070	37,505	
2014/15	29,065	1,430	865	180	1,290	32,835	270	5	5	5	325	610	2,980	225	445	145	1,040	4,830	32,310	1,665	1,315	335	2,655	38,280	
2015/16	28,810	1,340	820	155	1,115	32,245	280	5	0	5	260	550	2,960	240	370	155	1,025	4,750	32,045	1,590	1,195	315	2,400	37,545	
2016/17	28,825	1,340	815	150	1,165	32,290	325	10	5	5	245	590	2,905	345	345	155	1,195	4,940	32,055	1,695	1,165	305	2,605	37,825	
Part-time																									
2007/08	4,955	25	275	5	20	5,280	6,685	25	395	15	10	7,130	4,170	540	995	105	190	6,000	15,815	590	1,665	125	220	18,410	
2008/09	4,685	30	215	5	35	4,970	6,465	165	375	30	60	7,095	3,995	495	1,045	115	185	5,835	15,145	690	1,635	150	280	17,905	
2009/10	5,335	30	235	5	15	5,620	6,865	330	745	5	95	8,040	4,485	485	1,140	105	210	6,425	16,680	845	2,125	115	320	20,080	
2010/11	5,455	40	200	5	10	5,715	7,075	120	1,230	20	280	8,730	4,270	500	940	80	105	5,895	16,805	660	2,370	105	395	20,335	
2011/12	5,555	40	190	5	15	5,810	6,375	95	875	60	200	7,605	4,555	845	800	50	65	6,320	16,490	980	1,870	115	285	19,740	
2012/13	5,880	50	175	5	20	6,130	6,220	110	455	55	50	6,885	4,525	935	720	45	70	6,295	16,620	1,095	1,350	105	140	19,310	
2013/14	5,620	80	155	5	25	5,885	5,900	115	190	10	20	6,230	5,000	925	720	45	85	6,775	16,520	1,115	1,065	60	130	18,890	
2014/15	5,385	70	120	10	30	5,615	5,670	165	195	5	50	6,085	4,725	925	715	40	60	6,465	15,780	1,165	1,030	55	140	18,165	
2015/16	5,605	95	120	5	25	5,850	5,380	270	190	5	80	5,925	4,120	980	690	50	80	5,925	15,105	1,340	1,005	60	185	17,700	
2016/17	5,260	145	105	5	30	5,550	4,740	260	150	10	40	5,200	4,060	1,060	675	65	140	5,995	14,055	1,470	930	80	210	16,745	
Total																									
2007/08	32,030	390	1,465	95	455	34,435	7,405	30	420	45	30	7,925	6,605	665	1,410	290	825	9,795	46,040	1,085	3,290	430	1,310	52,155	
2008/09	32,190	475	1,265	95	435	34,455	6,695	170	385	35	135	7,415	7,025	660	1,595	315	985	10,580	45,910	1,305	3,240	445	1,550	52,450	
2009/10	33,535	550	1,185	100	430	35,800	7,105	330	760	30	150	8,375	7,645	625	1,855	280	1,025	11,425	48,285	1,510	3,800	410	1,605	55,600	
2010/11	33,685	665	1,215	95	495	36,155	7,305	120	1,235	20	440	9,120	7,825	660	1,835	250	1,010	11,585	48,820	1,445	4,285	370	1,945	56,860	
2011/12	33,815	750	1,140	95	1,390	37,185	6,630	95	885	65	375	8,050	7,630	980	1,500	195	1,185	11,485	48,075	1,825	3,520	355	2,950	56,720	
2012/13	33,980	815	1,115	100	1,555	37,565	6,465	110	460	60	315	7,415	7,375	1,075	1,260	180	1,290	11,180	47,820	2,000	2,835	340	3,160	56,155	
2013/14	34,125	935	1,010	120	1,520	37,710	6,200	120	190	15	380	6,915	7,950	1,110	1,215	195	1,300	11,775	48,275	2,170	2,420	330	3,200	56,395	
2014/15	34,450	1,505	985	190	1,320	38,450	5,940	175	200	10	375	6,695	7,700	1,150	1,160	185	1,100	11,295	48,090	2,825	2,345	385	2,795	56,445	
2015/16	34,415	1,435	945	160	1,140	38,095	5,660	275	195	10	340	6,475	7,080	1,220	1,060	205	1,110	10,675	47,150	2,930	2,195	375	2,585	55,245	
2016/17	34,085	1,485	925	155	1,195	37,840	5,065	270	155	15	285	5,790	6,965	1,405	1,020	215	1,330	10,935	46,110	3,160	2,095	385	2,815	54,570	

Source: Higher Education Statistics Agency (HESA)

To prevent the identification of individuals, figures in the attached table are rounded to the nearest 5, with 0, 1, 2 rounded to 0. Due to rounding, the sum of numbers in each row or column may not match the total shown.

Table 8a: Enrolments at Northern Ireland HEIs by domicile - 2007/08 to 2016/17 (with %)

Year	Domicile										
	NI	NI %	GB	GB %	Rol	Rol %	Other EU	%	Non-EU	Non-EU %	Total
2007/08	46,040	88.3%	1,085	2.1%	3,290	6.3%	430	0.8%	1,310	2.5%	52,155
2008/09	45,910	87.5%	1,305	2.5%	3,240	6.2%	445	0.8%	1,550	3.0%	52,450
2009/10	48,285	86.8%	1,510	2.7%	3,800	6.8%	410	0.7%	1,605	2.9%	55,600
2010/11	48,820	85.9%	1,445	2.5%	4,285	7.5%	370	0.6%	1,945	3.4%	56,860
2011/12	48,075	84.8%	1,825	3.2%	3,520	6.2%	355	0.6%	2,950	5.2%	56,720
2012/13	47,820	85.2%	2,000	3.6%	2,835	5.1%	340	0.6%	3,160	5.6%	56,155
2013/14	48,275	85.6%	2,170	3.8%	2,420	4.3%	330	0.6%	3,200	5.7%	56,395
2014/15	48,090	85.2%	2,825	5.0%	2,345	4.2%	385	0.7%	2,795	5.0%	56,445
2015/16	47,150	85.4%	2,930	5.3%	2,195	4.0%	375	0.7%	2,585	4.7%	55,245
2016/17	46,110	84.5%	3,160	5.8%	2,095	3.8%	385	0.7%	2,815	5.2%	54,570

Source: Higher Education Statistics Agency (HESA)

Table 8b: Enrolments at NI HEIs by domicile, level of study, mode of study and institution - 2016/17

Domicile	Level of study	Mode of study																
		Full-time and Sandwich					Part-time and Other					Total						
		Institution identifier					Institution identifier					Institution identifier						
		QUB ¹	UU ²	Stranmillis ³	St Mary's ⁴	Total	QUB ¹	UU ²	Stranmillis ³	St Mary's ⁴	OU ⁵	Total	QUB ¹	UU ²	Stranmillis ³	St Mary's ⁴	OU ⁵	Total
NI	Undergraduate	12,645	14,680	985	845	29,150	3,520	2,650	350	10	3,460	9,995	16,165	17,330	1,335	855	3,460	39,150
	Postgraduate	1,805	1,070	15	20	2,905	1,415	2,305	90	100	145	4,060	3,220	3,375	110	115	145	6,965
	Total	14,450	15,745	1,000	860	32,055	4,935	4,955	445	110	3,610	14,055	19,385	20,705	1,445	975	3,610	46,110
GB	Undergraduate	895	455	0	0	1,350	90	315	0	0	0	405	985	770	0	0	0	1,755
	Postgraduate	210	135	0	0	345	210	840	10	0	0	1,060	420	975	10	0	0	1,405
	Total	1,105	585	0	0	1,695	300	1,155	10	0	0	1,470	1,405	1,745	15	0	0	3,160
Rol	Undergraduate	255	550	10	10	820	50	205	0	0	0	255	305	755	10	10	0	1,080
	Postgraduate	165	180	0	0	345	250	410	5	5	0	675	415	590	10	5	0	1,020
	Total	420	730	10	10	1,165	300	615	10	5	0	930	720	1,345	20	15	0	2,095
Other EU	Undergraduate	70	80	0	0	150	10	10	0	0	0	20	80	90	0	0	0	170
	Postgraduate	105	50	0	0	155	35	25	0	0	0	65	140	75	0	0	0	215
	Total	175	130	0	0	305	45	35	0	0	0	80	220	165	0	0	0	385
Non-EU	Undergraduate	1,215	195	0	0	1,410	45	25	0	0	0	70	1,260	220	0	0	0	1,480
	Postgraduate	775	420	0	0	1,195	90	50	0	0	0	140	865	470	0	0	0	1,330
	Total	1,990	615	0	0	2,605	135	75	0	0	0	210	2,125	685	0	0	0	2,815
Total	Undergraduate	15,080	15,960	995	855	32,885	3,720	3,205	355	10	3,460	10,750	18,795	19,160	1,345	865	3,460	43,630
	Postgraduate	3,055	1,850	20	20	4,940	2,000	3,630	110	105	145	5,995	5,055	5,480	130	125	145	10,935
	Total	18,135	17,805	1,010	875	37,825	5,720	6,835	465	115	3,610	16,745	23,850	24,640	1,475	990	3,610	54,570

Source: Higher Education Statistics Agency (HESA)

Notes

(1) Queen's University Belfast (2) Ulster University (3) Stranmillis University College (4) St Mary's University College (5) Open University (NI)

To prevent the identification of individuals, figures in the attached table are rounded to the nearest 5, with 0, 1, 2 rounded to 0. Due to rounding, the sum of numbers in

Table8c: Enrolments at Ulster University by domicile, level of study, mode of study and campus - 2016/17

Domicile	Level	Mode of study																		
		Full-time							Part-time					Total						
		Ulster University							Ulster University					Ulster University						
		Belfast	Coleraine	Birmingham	Jordanstown	London	Magee	Total	Belfast	Coleraine	Jordanstown	Magee	Total	Belfast	Coleraine	Birmingham	Jordanstown	London	Magee	Total
NI	Undergraduate	1,330	3,125	0	6,985	0	3,235	14,680	205	150	1,870	425	2,650	1,535	3,275	0	8,860	0	3,660	17,330
	Postgraduate	65	350	0	530	0	120	1,070	125	230	1,770	185	2,305	190	580	0	2,300	0	305	3,375
	Total	1,400	3,475	0	7,515	0	3,360	15,745	330	380	3,640	605	4,955	1,725	3,855	0	11,160	0	3,965	20,705
GB	Undergraduate	10	45	90	20	270	15	455	0	150	145	15	315	10	195	90	170	270	30	770
	Postgraduate	20	30	0	15	60	10	135	5	265	535	40	840	20	290	0	550	60	50	975
	Total	30	75	90	35	330	25	585	5	415	680	55	1155	35	490	90	720	330	80	1,745
RoI	Undergraduate	35	195	0	85	0	235	550	0	10	135	60	205	35	205	0	220	0	295	755
	Postgraduate	25	45	0	65	0	40	180	5	25	335	50	410	25	75	0	400	0	90	590
	Total	60	245	0	150	0	275	730	5	35	470	105	615	60	280	0	620	0	385	1,345
Other EU	Undergraduate	10	10	0	35	25	5	80	0	0	5	0	10	10	10	0	40	25	5	90
	Postgraduate	0	10	0	25	10	5	50	0	5	20	0	25	0	10	0	45	10	5	75
	Total	10	20	0	60	35	10	130	0	5	25	5	35	15	20	0	85	35	10	165
Non-EU	Undergraduate	25	35	0	75	50	15	195	0	0	0	25	25	25	35	0	75	50	40	220
	Postgraduate	50	40	0	100	210	20	420	5	5	35	0	50	55	50	0	135	210	25	470
	Total	70	75	0	170	260	35	615	5	5	35	25	75	75	85	0	210	260	60	685
Total	Undergraduate	1,410	3,410	90	7,200	345	3,500	15,960	205	315	2,160	525	3,205	1,615	3,720	90	9,360	345	4,030	19,160
	Postgraduate	160	475	0	735	280	200	1,850	135	530	2,695	270	3,630	295	1,005	0	3,430	280	470	5,480
	Total	1,570	3,885	90	7,935	625	3,700	17,805	340	840	4,855	800	6,835	1,910	4,725	90	12,790	625	4,500	24,640

Source: Higher Education Statistics Agency (HESA)

Notes

To prevent the identification of individuals, figures in the attached table are rounded to the nearest 5, with 0, 1, 2 rounded to 0. Due to rounding, the sum of numbers in each row or column may not match the total shown.

Table 8d: Enrolments from outside the UK and Rol at Northern Ireland HEIs (not including UU Birmingham or London) by country of domicile (top 20) and institution - 2016/17

Country	Institution			
	QUB ¹	UU ²	Stranmillis ³	Total
China	750	125	0	875
Malaysia	400	0	0	400
United States	105	85	0	185
India	85	40	0	125
Hong Kong (Special Administrative Region of China)	90	25	0	115
Canada	55	20	0	80
Germany	25	35	0	60
Singapore	55	0	0	60
Pakistan	45	10	0	55
Indonesia	55	0	0	55
Saudi Arabia	35	10	0	50
Nigeria	30	15	0	45
Italy (Includes Sardinia, Sicily)	25	15	0	45
France (includes Corsica)	30	10	0	40
Greece	30	10	0	40
Spain (includes Ceuta, Melilla)	25	10	0	35
Jordan	30	5	0	35
Burma [Myanmar]	30	0	0	30
Vietnam	25	0	0	30
United Arab Emirates	25	5	0	30
Total	2,345	560	0	2,905

Source: Higher Education Statistics Agency (HESA)

Table 8e: Enrolments from outside the UK and Rol at UU Birmingham and London by country of domicile (top 20) and institution - 2016/17

Country	Ulster University		
	Birmingham	London	Total
Bangladesh	0	60	60
India	0	40	40
Nepal	0	35	35
Romania	0	20	20
China	0	20	20
Colombia	0	20	20
Vietnam	0	15	15
Pakistan	0	10	10
Nigeria	0	10	10
Sri Lanka	0	10	10
Senegal	0	5	5
Albania	0	5	5
France (includes Corsica)	0	5	5
Italy (Includes Sardinia, Sicily)	0	5	5
Morocco	0	5	5
Philippines	0	5	5
Brazil	0	0	0
Ghana	0	0	0
Qatar	0	0	0
Thailand	0	0	0
Total	0	290	290

Source: Higher Education Statistics Agency (HESA)

Table 8f: Percentage change of enrolments at Northern Ireland HEIs by domicile between 2007/08 and 2016/17

Year	Country of domicile					
	NI	GB	Rol	Other EU	Non-EU	Total
2007/08	46,040	1,085	3,290	430	1,310	52,155
2016/17	46,110	3,160	2,095	385	2,815	54,570
% change	0.2%	190.9%	-36.3%	-10.5%	115.1%	4.6%

Source: Higher Education Statistics Agency (HESA)

Table 8g: Percentage change of enrolments at Northern Ireland HEIs by domicile between 2015/16 and 2016/17

Year	Country of domicile					
	NI	GB	Rol	Other EU	Non-EU	Total
2015/16	47,150	2,930	2,195	375	2,585	55,245
2016/17	46,110	3,160	2,095	385	2,815	54,570
% change	-2.2%	7.8%	-4.6%	2.7%	8.7%	-1.2%

Source: Higher Education Statistics Agency (HESA)

Notes

(1) Queen's University Belfast (2) Ulster University (3) Stranmillis University College (4) St Mary's University College (5) Open University (NI)

To prevent the identification of individuals, figures in the attached table are rounded to the nearest 5, with 0, 1, 2 rounded to 0. Due to rounding, the sum of numbers in each row or column may not match the total shown.

Table 8h: Percentage change of enrolments at Northern Ireland HEIs by level of study between 2007/08 and 2016/17

Year	Level of study			
	First Degree	Other Undergraduate	Postgraduate	Total
2007/08	34,435	7,925	9,795	52,155
2016/17	37,840	5,790	10,935	54,570
% change	9.9%	-26.9%	11.7%	4.6%

Source: Higher Education Statistics Agency (HESA)

Table 8i: Percentage change of enrolments at Northern Ireland HEIs by mode of study between 2007/08 and 2016/17

Year	Mode of study		
	Full-time	Part-time	Total
2007/08	33,740	18,410	52,155
2016/17	37,825	16,745	54,570
% change	12.1%	-9.1%	4.6%

Source: Higher Education Statistics Agency (HESA)

Table 8j: Enrolments at Northern Ireland HEIs by mode of study - 2007/08 to 2016/17 (with %)

Year	Mode of Study				
	Full-time	Full-time %	Part-time	Part-time %	Total
2007/08	33,740	64.7%	18,410	35.3%	52,155
2008/09	34,545	65.9%	17,905	34.1%	52,450
2009/10	35,520	63.9%	20,080	36.1%	55,600
2010/11	36,520	64.2%	20,335	35.8%	56,860
2011/12	36,985	65.2%	19,740	34.8%	56,720
2012/13	36,845	65.6%	19,310	34.4%	56,155
2013/14	37,505	66.5%	18,890	33.5%	56,395
2014/15	38,280	67.8%	18,165	32.2%	56,445
2015/16	37,545	68.0%	17,700	32.0%	55,245
2016/17	37,825	69.3%	16,745	30.7%	54,570

Source: Higher Education Statistics Agency (HESA)

Table 8k: Percentage change of enrolments at Northern Ireland HEIs by mode of study between 2015/16 and 2016/17

Year	Mode of Study		
	Full-time	Part-time	Total
2015/16	37,545	17,700	55,245
2016/17	37,825	16,745	54,570
% change	0.7%	-5.4%	-1.2%

Source: Higher Education Statistics Agency (HESA)

Notes

To prevent the identification of individuals, figures in the attached table are rounded to the nearest 5, with 0, 1, 2 rounded to 0. Due to rounding, the sum of numbers in each row or column may not match the total shown.

Table 8l: Enrolments at Northern Ireland HEIs by level of study - 2007/08 to 2016/17 (with %)

Year	Level of study						
	First Degree	First Degree %	Other Undergraduate	Other Undergraduate %	Postgraduate	Postgraduate %	Total
2007/08	34,435	66.0%	7,925	15.2%	9,795	18.8%	52,155
2008/09	34,455	65.7%	7,415	14.1%	10,580	20.2%	52,450
2009/10	35,800	64.4%	8,375	15.1%	11,425	20.6%	55,600
2010/11	36,155	63.6%	9,120	16.0%	11,585	20.4%	56,860
2011/12	37,185	65.6%	8,050	14.2%	11,485	20.2%	56,720
2012/13	37,565	66.9%	7,415	13.2%	11,180	19.9%	56,155
2013/14	37,710	66.9%	6,915	12.3%	11,775	20.9%	56,395
2014/15	38,450	68.1%	6,695	11.9%	11,295	20.0%	56,445
2015/16	38,095	69.0%	6,475	11.7%	10,675	19.3%	55,245
2016/17	37,840	69.3%	5,790	10.6%	10,935	20.0%	54,570

Source: Higher Education Statistics Agency (HESA)

Table 8m: Percentage change of enrolments at Northern Ireland HEIs by level of study between 2015/16 and 2016/17

Year	Level of study			
	First Degree	Other Undergraduate	Postgraduate	Total
2015/16	38,095	6,475	10,675	55,245
2016/17	37,840	5,790	10,935	54,570
% change	-0.7%	-10.6%	2.5%	-1.2%

Source: Higher Education Statistics Agency (HESA)

Notes

To prevent the identification of individuals, figures in the attached table are rounded to the nearest 5, with 0, 1, 2 rounded to 0. Due to rounding, the sum of numbers in each row or column may not match the total shown.

Table 9: First year enrolments at Northern Ireland HEIs including OU by level of study, mode of study and domicile - 2007/08 to 2016/17

Mode and Year	First Degree						Other Undergraduate						Postgraduate						Total						
	Country of domicile						Country of domicile						Country of domicile						Country of domicile						
	NI	GB	RoI	Other EU	Non EU	Total	NI	GB	RoI	Other EU	Non EU	Total	NI	GB	RoI	Other EU	Non EU	Total	NI	GB	RoI	Other EU	Non EU	Total	
Full-time																									
2007/08	9,100	130	335	40	185	9,790	330	5	15	30	20	395	1,555	75	285	85	325	2,325	10,985	210	635	150	525	12,510	
2008/09	9,345	200	295	45	190	10,075	85	0	10	5	70	170	1,675	70	270	80	410	2,505	11,105	270	570	130	670	12,750	
2009/10	9,750	205	340	40	190	10,525	165	0	10	25	50	255	1,950	65	515	70	410	3,010	11,865	270	865	135	655	13,785	
2010/11	8,850	225	355	35	220	9,680	150	0	0	0	155	310	1,880	70	475	70	390	2,890	10,880	290	830	110	765	12,880	
2011/12	8,820	280	255	40	1,090	10,485	135	0	5	5	170	315	1,840	70	425	70	770	3,180	10,800	350	685	120	2,030	13,980	
2012/13	8,950	265	295	40	700	10,245	125	5	0	5	265	400	1,795	70	270	65	785	2,985	10,870	340	565	110	1,745	13,630	
2013/14	9,620	280	250	50	455	10,655	120	5	0	10	355	490	1,905	115	310	80	615	3,020	11,640	400	565	135	1,425	14,165	
2014/15	9,340	830	295	120	445	11,030	130	5	0	5	320	460	1,775	115	250	75	555	2,765	11,245	950	540	195	1,320	14,255	
2015/16	8,365	415	235	35	400	9,450	135	5	0	5	260	405	1,730	110	200	75	640	2,755	10,235	530	430	115	1,295	12,610	
2016/17	9,010	380	215	60	460	10,120	180	5	0	5	245	435	1,735	220	200	75	715	2,945	10,920	605	415	140	1,420	13,500	
Part-time																									
2007/08	1,360	5	80	0	0	1,450	5,585	25	345	15	10	5,980	2,135	260	490	45	55	2,980	9,080	290	915	60	65	10,410	
2008/09	1,635	5	60	5	10	1,715	5,345	160	270	30	60	5,865	1,900	235	505	55	80	2,775	8,880	400	835	85	150	10,355	
2009/10	1,690	15	70	0	0	1,775	5,515	270	670	5	80	6,540	2,180	190	460	20	25	2,870	9,385	470	1,200	25	105	11,190	
2010/11	1,725	10	45	0	0	1,780	5,765	75	785	20	250	6,895	2,100	210	255	20	20	2,610	9,595	295	1,090	40	270	11,290	
2011/12	1,725	15	60	5	5	1,810	5,260	75	800	55	120	6,310	2,220	565	285	15	15	3,105	9,205	655	1,145	75	140	11,225	
2012/13	2,030	10	45	0	0	2,090	5,475	80	395	20	50	6,025	2,240	610	310	15	30	3,200	9,750	700	750	35	80	11,315	
2013/14	1,520	45	55	5	5	1,625	5,320	100	140	10	20	5,585	2,585	590	320	20	20	3,530	9,420	735	510	30	40	10,740	
2014/15	1,560	15	35	5	0	1,610	5,110	150	170	5	50	5,485	2,370	510	280	15	20	3,195	9,040	675	485	25	70	10,290	
2015/16	1,930	50	30	5	0	2,015	4,895	245	155	5	80	5,380	2,035	580	270	25	35	2,945	8,855	880	460	35	115	10,340	
2016/17	1,480	80	45	0	0	1,610	4,255	210	120	10	40	4,635	2,225	645	275	30	50	3,225	7,960	935	445	40	90	9,470	
Total																									
2007/08	10,460	140	420	40	185	11,240	5,915	30	360	40	30	6,375	3,690	335	775	125	380	5,305	20,065	500	1,555	210	590	22,920	
2008/09	10,980	205	355	45	200	11,785	5,430	160	280	35	130	6,035	3,570	305	775	135	490	5,280	19,985	670	1,410	215	825	23,100	
2009/10	11,440	215	410	45	190	12,300	5,685	270	680	30	130	6,795	4,125	250	980	85	435	5,880	21,250	740	2,070	160	760	24,975	
2010/11	10,570	235	400	35	225	11,465	5,920	75	790	20	400	7,205	3,985	280	730	90	410	5,500	20,475	585	1,920	150	1,035	24,165	
2011/12	10,545	290	315	45	1,095	12,295	5,400	75	800	60	290	6,625	4,060	640	710	90	785	6,285	20,005	1,005	1,830	195	2,170	25,205	
2012/13	10,980	275	340	45	700	12,340	5,605	80	400	25	315	6,425	4,035	680	580	80	810	6,185	20,620	1,040	1,315	145	1,825	24,950	
2013/14	11,140	330	305	50	460	12,280	5,440	105	140	15	375	6,075	4,485	700	630	95	635	6,550	21,065	1,135	1,075	165	1,465	24,900	
2014/15	10,900	845	325	120	445	12,640	5,240	155	170	10	365	5,945	4,145	630	530	85	575	5,965	20,285	1,630	1,025	220	1,390	24,545	
2015/16	10,295	465	265	40	400	11,465	5,030	250	155	10	340	5,785	3,765	695	470	100	675	5,700	19,090	1,410	890	145	1,410	22,950	
2016/17	10,490	460	260	60	460	11,730	4,435	215	125	15	285	5,070	3,960	865	475	105	760	6,170	18,880	1,540	860	180	1,505	22,965	

Source: Higher Education Statistics Agency (HESA)

To prevent the identification of individuals, figures in the attached table are rounded to the nearest 5, with 0, 1, 2 rounded to 0. Due to rounding, the sum of numbers in each row or column may not match the total shown.

Table 9a: First year undergraduate enrolments at Northern Ireland HEIs by mode of study - 2007/08 to 2016/17

Year	Undergraduate		
	Full-time	Part-time	Total
2007/08	10,185	7,430	17,615
2008/09	10,245	7,580	17,825
2009/10	10,780	8,320	19,095
2010/11	9,990	8,680	18,670
2011/12	10,800	8,120	18,920
2012/13	10,650	8,115	18,765
2013/14	11,145	7,210	18,355
2014/15	11,490	7,095	18,585
2015/16	9,855	7,395	17,250
2016/17	10,555	6,245	16,800

Source: Higher Education Statistics Agency (HESA)

Table 9b: Percentage change of first year undergraduate enrolments at Northern Ireland HEIs by mode of study between 2015/16 and 2016/17

Year	Undergraduate		
	Full-time	Part-time	Total
2015/16	9,855	7,395	17,250
2016/17	10,555	6,245	16,800
% change	7.1%	-15.6%	-2.6%

Source: Higher Education Statistics Agency (HESA)

Notes

To prevent the identification of individuals, figures in the attached table are rounded to the nearest 5, with 0, 1, 2 rounded to 0. Due to rounding, the sum of numbers in each row or column may not match the total shown.

Table 10: Enrolments at Northern Ireland HEIs by level of study, mode of study, gender, year of student and country of domicile - 2016/17

Level	Mode	Gender	First Year Students						All Students					
			Country of domicile						Country of domicile					
			NI	GB	RoI	Other EU	Non-EU	Total	NI	GB	RoI	Other EU	Non-EU	Total
First Degree	Full-time	Male	4,045	190	60	35	225	4,550	13,050	620	250	65	570	14,555
		Female	4,965	190	155	25	235	5,570	15,770	720	565	80	595	17,735
		Total	9,010	380	215	60	460	10,120	28,825	1,340	815	150	1,165	32,290
	Part-time	Male	675	35	25	0	0	735	2,480	65	55	5	25	2,625
		Female	810	45	20	0	0	875	2,780	85	50	0	10	2,920
		Total	1,480	80	45	0	0	1,610	5,260	145	105	5	30	5,550
	All First Degree	Male	4,715	225	85	35	225	5,285	15,530	680	305	70	590	17,185
		Female	5,775	235	175	25	235	6,445	18,550	805	615	85	605	20,655
		Total	10,490	460	260	60	460	11,730	34,085	1,485	925	155	1,195	37,840
Other Undergraduate	Full-time	Male	60	5	0	0	145	210	135	10	0	0	145	290
		Female	120	0	0	0	100	225	195	0	5	0	100	305
		Total	180	5	0	5	245	435	325	10	5	5	245	590
	Part-time	Male	1,405	70	25	5	20	1,520	1,590	90	30	5	20	1,730
		Female	2,850	140	95	5	20	3,115	3,150	170	120	5	20	3,470
		Total	4,255	210	120	10	40	4,635	4,740	260	150	10	40	5,200
	All Other Undergraduate	Male	1,465	70	25	5	165	1,730	1,720	95	30	5	165	2,020
		Female	2,970	145	100	10	120	3,340	3,345	175	125	10	120	3,775
		Total	4,435	215	125	15	285	5,070	5,065	270	155	15	285	5,790
All Undergraduate	Full-time	Male	4,100	195	60	35	370	4,760	13,185	625	250	70	715	14,845
		Female	5,085	190	155	25	335	5,795	15,965	725	570	85	695	18,040
		Total	9,185	385	215	65	705	10,555	29,150	1,350	820	150	1,410	32,885
	Part-time	Male	2,080	100	50	5	20	2,255	4,070	150	85	10	40	4,355
		Female	3,655	185	120	5	20	3,990	5,930	255	170	10	30	6,390
		Total	5,735	290	170	10	40	6,245	9,995	405	255	20	70	10,750
	All Undergraduate	Male	6,180	295	110	40	385	7,010	17,255	780	340	75	755	19,200
		Female	8,740	380	275	35	355	9,785	21,895	980	740	90	725	24,430
		Total	14,920	675	385	75	745	16,800	39,150	1,755	1,080	170	1,480	43,630
Postgraduate	Full-time	Male	780	100	65	40	320	1,310	1,325	185	140	80	585	2,310
		Female	950	120	130	35	395	1,635	1,580	160	205	70	610	2,630
		Total	1,735	220	200	75	715	2,945	2,905	345	345	155	1,195	4,940
	Part-time	Male	720	115	105	5	15	960	1,465	225	270	20	50	2,030
		Female	1,505	530	170	25	35	2,265	2,595	840	400	45	90	3,965
		Total	2,225	645	275	30	50	3,225	4,060	1,060	675	65	140	5,995
	All Postgraduate	Male	1,505	215	170	45	335	2,270	2,785	405	410	100	635	4,340
		Female	2,455	650	300	60	430	3,900	4,175	1,000	610	115	700	6,600
		Total	3,960	865	475	105	760	6,170	6,965	1,405	1,020	215	1,330	10,935
All Students	Full-time	Male	4,885	295	125	75	690	6,070	14,510	810	390	150	1,300	17,155
		Female	6,035	310	290	65	730	7,430	17,545	885	775	155	1,305	20,670
		Total	10,920	605	415	140	1,420	13,500	32,055	1,695	1,165	305	2,605	37,825
	Part-time	Male	2,800	215	155	10	35	3,215	5,530	375	360	30	90	6,385
		Female	5,160	715	290	30	55	6,255	8,525	1,095	570	50	120	10,360
		Total	7,960	935	445	40	90	9,470	14,055	1,470	930	80	210	16,745
	All Students	Male	7,685	510	280	85	720	9,280	20,040	1,185	750	180	1,390	23,540
		Female	11,195	1,030	580	95	785	13,685	26,070	1,980	1,350	205	1,425	31,030
		Total	18,880	1,540	860	180	1,505	22,965	46,110	3,160	2,095	385	2,815	54,570

Source: Higher Education Statistics Agency (HESA)

To prevent the identification of individuals, figures in the attached table are rounded to the nearest 5, with 0, 1, 2 rounded to 0. Due to rounding, the sum of numbers in each row or column may not match the total shown.

Table 10a: Enrolments at Northern Ireland HEIs by mode of study and gender - 2016/17 (with %)

Mode	Gender				
	Male	Male %	Female	Female %	Total
Full-time	17,155	45.4%	20,670	54.6%	37,825
Part-time	6,385	38.1%	10,360	61.9%	16,745
Total	23,540	43.1%	31,030	56.9%	54,570

Source: Higher Education Statistics Agency (HESA)

Table 10b: Enrolments at Northern Ireland HEIs by gender and mode of study - 2016/17 (with %)

Gender	Mode of study				
	Full-time	Full-time %	Part-time	Part-time %	Total
Male	17,155	72.9%	6,385	27.1%	23,540
Female	20,670	66.6%	10,360	33.4%	31,030
Total	37,825	69.3%	16,745	30.7%	54,570

Source: Higher Education Statistics Agency (HESA)

Table 10c: Enrolments at Northern Ireland HEIs by gender and level of study - 2016/17

Gender	Level of study				Total
	First Degree	Other Undergraduate	All Undergraduate	Postgraduate	
Male	17,185	2,020	19,200	4,340	23,540
Female	20,655	3,775	24,430	6,600	31,030
Total	37,840	5,790	43,630	10,935	54,570

Source: Higher Education Statistics Agency (HESA)

Table 10d: Proportion of enrolments at Northern Ireland HEIs by gender and level of study - 2016/17

Gender	Level of study				Total
	First Degree	Other Undergraduate	All Undergraduate	Postgraduate	
Male	73.0%	8.6%	81.6%	18.4%	23,540
Female	66.6%	12.2%	78.7%	21.3%	31,030
Total	69.3%	10.6%	80.0%	20.0%	54,570

Source: Higher Education Statistics Agency (HESA)

Notes

To prevent the identification of individuals, figures in the attached table are rounded to the nearest 5, with 0, 1, 2 rounded to 0. Due to rounding, the sum of numbers in each row or column may not match the total shown.

Table 11: Enrolments at Northern Ireland HEIs by level of study, age group, year of student, mode of study and gender - 2016/17

Level	Age	First Year Students									All Students								
		Full-time			Part-time			Full-time & Part-time			Full-time			Part-time			Full-time & Part-time		
		Male	Female	Total	Male	Female	Total	Male	Female	Total	Male	Female	Total	Male	Female	Total	Male	Female	Total
First Degree	Under 21	3,650	4,305	7,955	115	150	265	3,770	4,455	8,225	7,970	10,075	18,045	340	310	650	8,310	10,385	18,690
	21 - 24	590	650	1,245	165	165	330	755	815	1,570	5,275	5,500	10,775	545	565	1,110	5,820	6,065	11,890
	25 and over	305	615	920	450	565	1,015	755	1,175	1,935	1,315	2,160	3,470	1,740	2,050	3,790	3,055	4,205	7,260
	Total	4,550	5,570	10,120	735	875	1,610	5,285	6,445	11,730	14,555	17,735	32,290	2,625	2,920	5,550	17,185	20,655	37,840
Other Undergraduate	Under 21	155	175	330	80	135	215	235	310	545	210	230	445	80	155	235	290	390	680
	21 - 24	40	35	75	90	195	285	135	230	365	65	50	115	110	230	335	175	280	455
	25 and over	10	15	25	1,350	2,785	4,135	1,360	2,805	4,165	10	20	30	1,540	3,085	4,630	1,555	3,105	4,660
	Total	210	225	435	1,520	3,115	4,635	1,730	3,340	5,070	290	305	590	1,730	3,470	5,200	2,020	3,775	5,790
All Undergraduate	Under 21	3,805	4,480	8,285	195	280	480	4,005	4,760	8,765	8,180	10,310	18,490	420	465	885	8,600	10,770	19,370
	21 - 24	635	685	1,320	255	355	615	890	1,045	1,935	5,340	5,550	10,895	655	795	1,450	5,995	6,345	12,340
	25 and over	315	630	945	1,800	3,350	5,150	2,115	3,980	6,095	1,325	2,180	3,500	3,285	5,135	8,415	4,605	7,310	11,920
	Total	4,760	5,795	10,555	2,255	3,990	6,245	7,010	9,785	16,800	14,845	18,040	32,885	4,355	6,390	10,750	19,200	24,430	43,630
Postgraduate	Under 21	10	10	20	0	0	5	10	10	20	10	10	20	0	0	5	10	10	20
	21 - 24	735	975	1,710	160	270	430	895	1,250	2,140	1,070	1,330	2,395	225	395	620	1,290	1,725	3,015
	25 and over	565	650	1,215	800	1,990	2,790	1,365	2,640	4,005	1,230	1,295	2,525	1,805	3,570	5,370	3,035	4,860	7,895
	Total	1,310	1,635	2,945	960	2,265	3,225	2,270	3,900	6,170	2,310	2,630	4,940	2,030	3,965	5,995	4,340	6,600	10,935
All Students	Under 21	3,815	4,490	8,305	200	285	480	4,015	4,775	8,785	8,190	10,315	18,505	420	465	885	8,610	10,785	19,395
	21 - 24	1,370	1,665	3,030	415	630	1,045	1,785	2,290	4,075	6,410	6,880	13,290	880	1,190	2,070	7,285	8,070	15,360
	25 and over	885	1,280	2,160	2,600	5,340	7,940	3,485	6,620	10,105	2,555	3,470	6,025	5,085	8,705	13,790	7,640	12,175	19,815
	Total	6,070	7,430	13,500	3,215	6,255	9,470	9,280	13,685	22,965	17,155	20,670	37,825	6,385	10,360	16,745	23,540	31,030	54,570

Source: Higher Education Statistics Agency (HESA)

To prevent the identification of individuals, figures in the attached table are rounded to the nearest 5, with 0, 1, 2 rounded to 0. Due to rounding, the sum of numbers in each row or column may not match the total shown.

Table 11a: Enrolments at Northern Ireland HEIs by level of study and age group - 2016/17 (with %)

Level	Age group						
	Under 21	Under 21 %	21-24	21-24 %	25 and over	25 and over %	Total
First Degree	18,690	49.4%	11,890	31.4%	7,260	19.2%	37,840
Other Undergraduate	680	11.7%	455	7.8%	4,660	80.4%	5,790
All Undergraduate	19,370	44.4%	12,340	28.3%	11,920	27.3%	43,630
Postgraduate	20	0.2%	3,015	27.6%	7,895	72.2%	10,935
All Students	19,395	35.5%	15,360	28.1%	19,815	36.3%	54,570

Source: Higher Education Statistics Agency (HESA)

Table 11b: Enrolments at Northern Ireland HEIs by age group and level of study - 2016/17 (with %)

Age group	Level of study								
	First Degree	First Degree %	Other Undergraduate	Other Undergraduate %	All Undergraduate	All Undergraduate %	Postgraduate	Postgraduate %	Total
Under 21	18,690	96.4%	680	3.5%	19,370	99.9%	20	0.1%	19,395
21 - 24	11,890	77.4%	455	2.9%	12,340	80.4%	3,015	19.6%	15,360
25 and over	7,260	36.6%	4,660	23.5%	11,920	60.1%	7,895	39.9%	19,815
Total	37,840	69.3%	5,790	10.6%	43,630	80.0%	10,935	20.0%	54,570

Source: Higher Education Statistics Agency (HESA)

Table 11c: Enrolments at Northern Ireland HEIs by age group, mode of study and level of study - 2016/17

Age	Mode of study											
	Full-time						Part-time					Total
	First Degree	Other Undergraduate	All Undergraduate	Postgraduate	Total	First Degree	Other Undergraduate	All Undergraduate	Postgraduate	Total		
Under 21	18,045	445	18,490	20	18,505	650	235	885	5	885	19,395	
21 - 24	10,775	115	10,895	2,395	13,290	1,110	335	1,450	620	2,070	15,360	
25 and over	3,470	30	3,500	2,525	6,025	3,790	4,630	8,415	5,370	13,790	19,815	
Total	32,290	590	32,885	4,940	37,825	5,550	5,200	10,750	5,995	16,745	54,570	

Source: Higher Education Statistics Agency (HESA)

Table 11d: Proportion of enrolments at Northern Ireland HEIs in each mode and level of study by age group - 2016/17

Age	Mode of study											
	Full-time						Part-time					Total
	First Degree	Other Undergraduate	All Undergraduate	Postgraduate	Total	First Degree	Other Undergraduate	All Undergraduate	Postgraduate	Total		
Under 21	93.0%	2.3%	95.3%	0.1%	95.4%	3.3%	1.2%	4.6%	0.0%	4.6%	19,395	
21 - 24	70.2%	0.8%	70.9%	15.6%	86.5%	7.2%	2.2%	9.4%	4.0%	13.5%	15,360	
25 and over	17.5%	0.2%	17.7%	12.7%	30.4%	19.1%	23.4%	42.5%	27.1%	69.6%	19,815	
Total	59.2%	1.1%	60.3%	9.1%	69.3%	10.2%	9.5%	19.7%	11.0%	30.7%	54,570	

Source: Higher Education Statistics Agency (HESA)

Notes

To prevent the identification of individuals, figures in the attached table are rounded to the nearest 5, with 0, 1, 2 rounded to 0. Due to rounding, the sum of numbers in each row or column may not match the total shown.

Table 12: Enrolments at Northern Ireland HEIs by subject area, year of student, mode of study and gender - 2016/17

Subject Area	First Year Students									All Students								
	Full-time			Part-time			Full-time & Part-time			Full-time			Part-time			Full-time & Part-time		
	Male	Female	Total	Male	Female	Total	Male	Female	Total	Male	Female	Total	Male	Female	Total	Male	Female	Total
Medicine & dentistry	180	275	455	40	80	120	225	350	575	710	1,130	1,835	110	140	250	815	1,270	2,085
Subjects allied to medicine	385	1,500	1,880	260	1,795	2,050	640	3,290	3,935	1,090	4,385	5,475	455	2,580	3,040	1,550	6,965	8,515
Biological sciences	395	595	990	90	195	285	490	785	1,275	1,085	1,675	2,760	300	510	805	1,385	2,185	3,565
Veterinary science	0	0	0	0	0	0	0	0	0	0	0	0	0	0	0	0	0	0
Agriculture & related subjects	45	100	145	20	20	40	70	120	185	165	325	490	50	50	95	215	370	585
Physical sciences	255	200	450	50	35	85	305	230	535	785	595	1,380	195	135	325	980	730	1,705
Mathematical sciences	70	55	125	20	10	30	90	65	155	245	180	430	95	50	140	340	230	570
Computer science	875	270	1,145	165	35	200	1,040	305	1,345	2,620	895	3,515	610	115	725	3,230	1,010	4,240
Engineering & technology	855	235	1,090	100	15	115	960	250	1,210	2,700	650	3,350	425	60	485	3,125	710	3,835
Architecture, building & planning	350	140	495	105	70	175	460	210	670	905	335	1,240	225	110	335	1,130	445	1,575
Social studies	455	795	1,255	185	530	715	645	1,325	1,970	1,150	1,985	3,130	425	1,070	1,495	1,575	3,050	4,625
Law	295	525	820	45	80	125	340	605	945	650	1,190	1,840	155	255	410	805	1,445	2,250
Business & administrative studies	1,045	1,055	2,105	450	470	925	1,500	1,530	3,030	2,720	2,745	5,465	1,000	1,055	2,055	3,720	3,795	7,520
Mass communications & documentation	105	175	280	15	30	45	120	200	325	275	425	700	35	70	105	310	495	805
Languages	100	300	400	55	85	140	155	385	540	350	1,015	1,365	160	265	425	510	1,280	1,795
Historical & philosophical studies	190	170	360	35	35	70	225	205	430	550	465	1,015	145	120	265	695	585	1,280
Creative arts & design	265	395	660	30	40	70	295	435	730	740	1,205	1,940	100	110	215	840	1,315	2,155
Education	195	645	840	1,245	2,330	3,575	1,435	2,980	4,415	415	1,475	1,885	1,420	3,005	4,425	1,835	4,480	6,310
Combined	0	0	0	295	405	700	295	405	700	0	0	0	480	665	1,145	480	665	1,145
Total	6,070	7,430	13,500	3,215	6,255	9,470	9,280	13,685	22,965	17,155	20,670	37,825	6,385	10,360	16,745	23,540	31,030	54,570

Source: Higher Education Statistics Agency (HESA)

To prevent the identification of individuals, figures in the attached table are rounded to the nearest 5, with 0, 1, 2 rounded to 0. Due to rounding, the sum of numbers in each row or column may not match the total shown.

Table 12a: Enrolments at Northern Ireland HEIs by gender and STEM - 2016/17 (with %)

Gender	STEM category						Total
	Broad STEM	Broad STEM %	Narrow STEM	Narrow STEM %	Non STEM	Non STEM %	
Male	12,770	54.2%	9,060	38.5%	10,770	45.8%	23,540
Female	13,915	44.8%	4,860	15.7%	17,115	55.2%	31,030
Total	26,685	48.9%	13,920	25.5%	27,885	51.1%	54,570

Source: Higher Education Statistics Agency (HESA)

Table 12b: Enrolments at Northern Ireland HEIs by mode of study and STEM - 2016/17 (with %)

Mode	STEM category						Total
	Broad STEM	Broad STEM %	Narrow STEM	Narrow STEM %	Non STEM	Non STEM %	
Full-time	20,480	54.1%	11,435	30.2%	17,345	45.9%	37,825
Part-time	6,205	37.1%	2,485	14.8%	10,540	62.9%	16,745
Total	26,685	48.9%	13,920	25.5%	27,885	51.1%	54,570

Source: Higher Education Statistics Agency (HESA)

Table 12c: Enrolments at Northern Ireland HEIs by subject area and gender - 2016/17 (with %)

Subject Area	Gender					
	Male	Male %	Female	Female %	Total	Total %
Subjects allied to medicine	1,550	18.2%	6,965	81.8%	8,515	15.6%
Business & administrative studies	3,720	49.5%	3,795	50.5%	7,520	13.8%
Education	1,835	29.1%	4,480	70.9%	6,310	11.6%
Social studies	1,575	34.0%	3,050	66.0%	4,625	8.5%
Computer science	3,230	76.2%	1,010	23.8%	4,240	7.8%
Engineering & technology	3,125	81.5%	710	18.5%	3,835	7.0%
Biological sciences	1,385	38.8%	2,185	61.2%	3,565	6.5%
Law	805	35.8%	1,445	64.2%	2,250	4.1%
Creative arts & design	840	39.0%	1,315	61.0%	2,155	4.0%
Medicine & dentistry	815	39.2%	1,270	60.8%	2,085	3.8%
Languages	510	28.5%	1,280	71.5%	1,795	3.3%
Physical sciences	980	57.3%	730	42.7%	1,705	3.1%
Architecture, building & planning	1,130	71.6%	445	28.4%	1,575	2.9%
Historical & philosophical studies	695	54.4%	585	45.6%	1,280	2.3%
Combined	480	41.9%	665	58.2%	1,145	2.1%
Mass communications & documentation	310	38.4%	495	61.6%	805	1.5%
Agriculture & related subjects	215	36.6%	370	63.4%	585	1.1%
Mathematical sciences	340	59.8%	230	40.2%	570	1.0%
Veterinary science	0	-	0	-	0	0.0%
Total	23,540	43.1%	31,030	56.9%	54,570	100.0%

Source: Higher Education Statistics Agency (HESA)

Notes

To prevent the identification of individuals, figures in the attached table are rounded to the nearest 5, with 0, 1, 2 rounded to 0. Due to rounding, the sum of numbers in each row or column may not match the total shown.

Broad STEM includes the following subject areas: Medicine & dentistry; Subjects allied to medicine; Biological sciences; Veterinary science; Agriculture & related subjects; Physical sciences; Mathematical sciences; Computer science; Engineering & technology; and Architecture, building & planning. Narrow STEM is a subset of Broad STEM and includes the following subject areas: Biological sciences; Physical sciences; Mathematical sciences; Computer science; and Engineering & technology.

Table 13: Enrolments at Northern Ireland HEIs by level of study, mode of study and institution - 2012/13 to 2016/17

Level and Year	Full-time						Part-time						Total						
	Institution						Institution						Institution						
	QUB ⁽¹⁾	UU ⁽²⁾	Stranmillis ⁽³⁾	St Mary's ⁽⁴⁾	OU ⁽⁵⁾	Total	QUB ⁽¹⁾	UU ⁽²⁾	Stranmillis ⁽³⁾	St Mary's ⁽⁴⁾	OU ⁽⁵⁾	Total	QUB ⁽¹⁾	UU ⁽²⁾	Stranmillis ⁽³⁾	St Mary's ⁽⁴⁾	OU ⁽⁵⁾	Total	
First Degree																			
2012/13	13,860	15,905	805	860	0	31,435	700	2,225	205	5	3,000	6,130	14,560	18,130	1,010	865	3,000	37,565	
2013/14	14,135	16,000	845	845	0	31,825	565	2,155	140	15	3,005	5,885	14,700	18,155	985	860	3,005	37,710	
2014/15	14,645	16,510	830	850	0	32,835	510	1,840	195	10	3,065	5,615	15,155	18,350	1,025	860	3,065	38,450	
2015/16	14,730	15,800	850	860	0	32,245	460	2,175	205	15	3,000	5,850	15,190	17,975	1,055	875	3,000	38,095	
2016/17	14,725	15,885	830	855	0	32,290	440	2,015	230	10	2,855	5,550	15,160	17,900	1,060	865	2,855	37,840	
Other Undergraduate																			
2012/13	285	180	60	0	0	525	3,230	2,350	110	0	1,195	6,885	3,515	2,525	175	0	1,195	7,415	
2013/14	265	315	100	0	0	680	3,405	1,865	80	0	880	6,230	3,670	2,180	180	0	880	6,915	
2014/15	300	210	100	0	0	610	3,405	2,015	110	0	560	6,085	3,700	2,220	215	0	560	6,695	
2015/16	325	105	120	0	0	550	3,445	1,790	100	0	590	5,925	3,770	1,890	220	0	590	6,475	
2016/17	355	70	165	0	0	590	3,280	1,190	125	0	610	5,200	3,635	1,260	290	0	610	5,790	
All Undergraduate																			
2012/13	14,145	16,085	870	860	0	31,960	3,925	4,575	315	5	4,195	13,015	18,075	20,655	1,185	865	4,195	44,975	
2013/14	14,400	16,315	945	845	0	32,505	3,970	4,020	220	15	3,885	12,115	18,370	20,335	1,165	860	3,885	44,620	
2014/15	14,945	16,720	935	850	0	33,445	3,915	3,855	305	10	3,625	11,705	18,855	20,570	1,240	860	3,625	45,150	
2015/16	15,055	15,905	970	860	0	32,795	3,905	3,965	305	15	3,590	11,775	18,960	19,865	1,280	875	3,590	44,570	
2016/17	15,080	15,960	995	855	0	32,885	3,720	3,205	355	10	3,460	10,750	18,795	19,160	1,345	865	3,460	43,630	
Postgraduate																			
2012/13	2,510	2,325	35	20	0	4,885	2,115	3,480	240	215	245	6,295	4,625	5,800	275	235	245	11,180	
2013/14	2,615	2,335	25	20	0	5,000	2,330	3,530	330	330	250	6,775	4,950	5,865	360	350	250	11,775	
2014/15	2,785	2,000	25	20	0	4,830	2,210	3,510	295	275	175	6,465	4,995	5,510	315	295	175	11,295	
2015/16	2,905	1,800	25	20	0	4,750	2,005	3,490	135	145	150	5,925	4,910	5,290	160	165	150	10,675	
2016/17	3,055	1,850	20	20	0	4,940	2,000	3,630	110	105	145	5,995	5,055	5,480	130	125	145	10,935	
Total																			
2012/13	16,655	18,405	900	880	0	36,845	6,045	8,050	560	220	4,440	19,310	22,700	26,460	1,460	1,100	4,440	56,155	
2013/14	17,020	18,650	970	865	0	37,505	6,300	7,555	555	345	4,135	18,890	23,320	26,200	1,525	1,210	4,135	56,395	
2014/15	17,730	18,720	955	870	0	38,280	6,120	7,365	600	285	3,795	18,165	23,855	26,085	1,555	1,155	3,795	56,445	
2015/16	17,965	17,700	1,000	880	0	37,545	5,905	7,455	440	160	3,735	17,700	23,870	25,155	1,440	1,040	3,735	55,245	
2016/17	18,135	17,805	1,010	875	0	37,825	5,720	6,835	465	115	3,610	16,745	23,850	24,640	1,475	990	3,610	54,570	

Source: Higher Education Statistics Agency (HESA)

Notes

(1) Queen's University Belfast (2) Ulster University (3) Stranmillis University College (4) St Mary's University College (5) Open University

To prevent the identification of individuals, figures in the attached table are rounded to the nearest 5, with 0, 1, 2 rounded to 0. Due to rounding, the sum of numbers in each row or column may not match the total shown.

Table 13a: Percentage change of enrolments at Northern Ireland HEIs in each level of study and institution between 2015/16 and 2016/17

Year	Mode of study																	
	Full-time						Part-time						Total					
	Institution						Institution						Institution					
	QUB	UU	Stranmillis	St Marys	OU	Total	QUB	UU	Stranmillis	St Marys	OU	Total	QUB	UU	Stranmillis	St Marys	OU	Total
2015/16	17,965	17,700	1,000	880	0	37,545	5,905	7,455	440	160	3,735	17,700	23,870	25,155	1,440	1,040	3,735	55,245
2016/17	18,135	17,805	1,010	875	0	37,825	5,720	6,835	465	115	3,610	16,745	23,850	24,640	1,475	990	3,610	54,570
% change	0.9%	0.6%	1.4%	-0.9%	-	0.7%	-3.2%	-8.3%	5.0%	-27.0%	-3.4%	-5.4%	-0.1%	-2.0%	2.5%	-4.9%	-3.4%	-1.2%

Source: Higher Education Statistics Agency (HESA)

Table 13b: Proportion of enrolments at Northern Ireland HEIs in each institution by mode of study - 2016/17

Mode	Institution					
	QUB	UU	Stranmillis	St Marys	OU	Total
Full-time	47.9%	47.1%	2.7%	2.3%	0.0%	37,825
Part-time	34.2%	40.8%	2.8%	0.7%	21.6%	16,745
Total	43.7%	45.2%	2.7%	1.8%	6.6%	54,570

Source: Higher Education Statistics Agency (HESA)

Table 13c: Percentage change of enrolments at UU Birmingham and London by mode of study between 2015/16 and 2016/17

Mode and Year	Ulster University		Total	
	Birmingham	London		
Full-time	2015/16	165	630	795
	2016/17	90	625	715
	% change	-44.9%	-1.1%	-10.3%
Part-time	2015/16	0	0	0
	2016/17	0	0	0
	% change	-	-	-
Total	2015/16	165	630	795
	2016/17	90	625	715
	% change	-44.9%	-1.1%	-10.3%

Source: Higher Education Statistics Agency (HESA)

Notes

To prevent the identification of individuals, figures in the attached table are rounded to the nearest 5, with 0, 1, 2 rounded to 0. Due to rounding, the sum of numbers in each row or column may not match the total shown.

Table 13d: Percentage change of enrolments at Northern Ireland HEIs (not including UU Birmingham or London) by mode of study between 2015/16 and 2016/17

Mode and Year	Institution						
	QUB	UU	Stranmillis	St Mary's	OU	Total	
Full-time	2015/16	17,965	16,905	1,000	880	0	36,745
	2016/17	18,135	17,090	1,010	875	0	37,110
	% change	0.9%	1.1%	1.4%	-0.9%	-	1.0%
Part-time	2015/16	5,905	7,455	440	160	3,735	17,700
	2016/17	5,720	6,835	465	115	3,610	16,745
	% change	-3.2%	-8.3%	5.0%	-27.0%	-3.4%	-5.4%
Total	2015/16	23,870	24,360	1,440	1,040	3,735	54,445
	2016/17	23,850	23,925	1,475	990	3,610	53,855
	% change	-0.1%	-1.8%	2.5%	-4.9%	-3.4%	-1.1%

Source: Higher Education Statistics Agency (HESA)

Table 13e: Percentage change of enrolments at Northern Ireland HEIs in each institution by level of study between 2015/16 and 2016/17

Level and Year	Institution						
	QUB	UU	Stranmillis	St Mary's	OU	Total	
First Degree	2015/16	15,190	17,975	1,055	875	3,000	38,095
	2016/17	15,160	17,900	1,060	865	2,855	37,840
	% change	-0.2%	-0.4%	0.1%	-1.1%	-4.8%	-0.7%
Other Undergraduate	2015/16	3,770	1,890	220	0	590	6,475
	2016/17	3,635	1,260	290	0	610	5,790
	% change	-3.6%	-33.4%	30.2%	-	2.9%	-10.6%
All Undergraduate	2015/16	18,960	19,865	1,280	875	3,590	44,570
	2016/17	18,795	19,160	1,345	865	3,460	43,630
	% change	-0.9%	-3.5%	5.3%	-1.1%	-3.5%	-2.1%
Postgraduate	2015/16	4,910	5,290	160	165	150	10,675
	2016/17	5,055	5,480	130	125	145	10,935
	% change	3.0%	3.6%	-19.9%	-24.8%	-0.7%	2.5%
Total	2015/16	23,870	25,155	1,440	1,040	3,735	55,245
	2016/17	23,850	24,640	1,475	990	3,610	54,570
	% change	-0.1%	-2.0%	2.5%	-4.9%	-3.4%	-1.2%

Source: Higher Education Statistics Agency (HESA)

Notes

To prevent the identification of individuals, figures in the attached table are rounded to the nearest 5, with 0, 1, 2 rounded to 0. Due to rounding, the sum of numbers in each row or column may not match the total shown.

UK COMPARISON

Table 14: All enrolments at UK HEIs including OU by level of study, mode of study and location of institution - 2012/13 to 2016/17

Level and Year	Full-time					Part-time					Total				
	Location of Institution					Location of Institution					Location of Institution				
	NI	England	Scotland	Wales	Total UK	NI	England	Scotland	Wales	Total UK	NI	England	Scotland	Wales	Total UK
First Degree															
2012/13	31,435	1,076,195	132,040	72,665	1,312,335	6,130	182,365	17,820	9,830	216,145	37,565	1,258,560	149,860	82,490	1,528,480
2013/14	31,825	1,095,175	133,820	73,425	1,334,245	5,885	166,945	17,505	9,280	199,610	37,710	1,262,120	151,325	82,705	1,533,855
2014/15	32,835	1,099,325	136,230	72,200	1,340,595	5,615	152,050	17,095	8,870	183,630	38,450	1,251,375	153,325	81,070	1,524,225
2015/16	32,245	1,143,385	139,615	73,610	1,388,855	5,850	143,255	17,825	8,115	175,045	38,095	1,286,640	157,440	81,725	1,563,900
2016/17	32,290	1,180,640	142,235	74,985	1,430,150	5,550	135,100	18,890	8,135	167,670	37,840	1,315,745	161,125	83,115	1,597,825
Other Undergraduate															
2012/13	525	64,400	4,020	4,390	73,340	6,885	148,940	23,590	22,605	202,020	7,415	213,340	27,610	26,995	275,360
2013/14	680	47,745	4,700	4,215	57,340	6,230	120,595	20,675	21,225	168,720	6,915	168,340	25,370	25,435	226,065
2014/15	610	40,970	5,180	4,350	51,110	6,085	109,165	17,870	19,435	152,555	6,695	150,135	23,050	23,785	203,670
2015/16	550	36,245	5,130	4,640	46,565	5,925	98,075	16,285	17,105	137,390	6,475	134,320	21,410	21,745	183,955
2016/17	590	35,730	5,065	5,295	46,685	5,200	83,040	16,920	16,620	121,775	5,790	118,770	21,985	21,915	168,460
All Undergraduate															
2012/13	31,960	1,140,600	136,060	77,055	1,385,675	13,015	331,305	41,410	32,435	418,165	44,975	1,471,905	177,470	109,490	1,803,840
2013/14	32,505	1,142,920	138,520	77,635	1,391,585	12,115	287,540	38,175	30,505	368,335	44,620	1,430,460	176,695	108,140	1,759,915
2014/15	33,445	1,140,300	141,410	76,550	1,391,705	11,705	261,215	34,965	28,305	336,190	45,150	1,401,515	176,370	104,860	1,727,895
2015/16	32,795	1,179,630	144,745	78,255	1,435,420	11,775	241,330	34,105	25,220	312,435	44,570	1,420,960	178,850	103,475	1,747,855
2016/17	32,885	1,216,370	147,300	80,280	1,476,835	10,750	218,140	35,805	24,750	289,450	43,630	1,434,510	183,105	105,035	1,766,285
Postgraduate															
2012/13	4,885	244,720	31,005	15,860	296,470	6,295	199,040	22,475	12,160	239,965	11,180	443,760	53,480	28,020	536,440
2013/14	5,000	250,555	32,280	16,610	304,445	6,775	194,005	21,825	12,385	234,995	11,775	444,560	54,105	28,995	539,440
2014/15	4,830	251,680	33,435	15,500	305,445	6,465	190,905	22,765	12,605	232,740	11,295	442,580	56,200	28,105	538,180
2015/16	4,750	252,110	34,715	13,550	305,120	5,925	188,275	21,995	11,655	227,850	10,675	440,385	56,715	25,200	532,975
2016/17	4,940	266,510	36,495	13,270	321,215	5,995	190,960	22,330	11,090	230,380	10,935	457,470	58,825	24,365	551,595
Total															
2012/13	36,845	1,385,315	167,065	92,915	1,682,145	19,310	530,345	63,885	44,590	658,130	56,155	1,915,660	230,950	137,510	2,340,275
2013/14	37,505	1,393,475	170,800	94,250	1,696,030	18,890	481,545	60,000	42,890	603,325	56,395	1,875,020	230,805	137,135	2,299,355
2014/15	38,280	1,391,975	174,840	92,050	1,697,150	18,165	452,120	57,730	40,915	568,930	56,445	1,844,095	232,570	132,965	2,266,075
2015/16	37,545	1,431,735	179,460	91,800	1,740,540	17,700	429,610	56,105	36,875	540,285	55,245	1,861,345	235,565	128,675	2,280,830
2016/17	37,825	1,482,880	183,795	93,550	1,798,050	16,745	409,100	58,140	35,845	519,825	54,570	1,891,980	241,935	129,395	2,317,880

Source: Higher Education Statistics Agency (HESA)

Notes

To prevent the identification of individuals, figures in the attached table are rounded to the nearest 5, with 0, 1, 2 rounded to 0. Due to rounding, the sum of numbers in each row or column may not match the total shown.

Table 14a: Percentage change of enrolments at UK HEIs by mode of study and location of institution between 2015/16 and 2016/17

Mode and Year	Location of Institution					
	NI	England	Scotland	Wales	Total UK	
Full-time	2015/16	37,545	1,431,735	179,460	91,800	1,740,540
	2016/17	37,825	1,482,880	183,795	93,550	1,798,050
	% change	0.7%	3.6%	2.4%	1.9%	3.3%
Part-time	2015/16	17,700	429,610	56,105	36,875	540,285
	2016/17	16,745	409,100	58,140	35,845	519,825
	% change	-5.4%	-4.8%	3.6%	-2.8%	-3.8%
Total	2015/16	55,245	1,861,345	235,565	128,675	2,280,830
	2016/17	54,570	1,891,980	241,935	129,395	2,317,880
	% change	-1.2%	1.6%	2.7%	0.6%	1.6%

Source: Higher Education Statistics Agency (HESA)

Table 14b: Percentage change of enrolments at UK HEIs by level of study and location of institution between 2015/16 and 2016/17

Mode and Year	Location of Institution					
	NI	England	Scotland	Wales	Total UK	
First Degree	2015/16	38,095	1,286,640	157,440	81,725	1,563,900
	2016/17	37,840	1,315,745	161,125	83,115	1,597,825
	% change	-0.7%	2.3%	2.3%	1.7%	2.2%
Other Undergraduate	2015/16	6,475	134,320	21,410	21,745	183,955
	2016/17	5,790	118,770	21,985	21,915	168,460
	% change	-10.6%	-11.6%	2.7%	0.8%	-8.4%
All Undergraduate	2015/16	44,570	1,420,960	178,850	103,475	1,747,855
	2016/17	43,630	1,434,510	183,105	105,035	1,766,285
	% change	-2.1%	1.0%	2.4%	1.5%	1.1%
Postgraduate	2015/16	10,675	440,385	56,715	25,200	532,975
	2016/17	10,935	457,470	58,825	24,365	551,595
	% change	2.5%	3.9%	3.7%	-3.3%	3.5%
Total	2015/16	55,245	1,861,345	235,565	128,675	2,280,830
	2016/17	54,570	1,891,980	241,935	129,395	2,317,880
	% change	-1.2%	1.6%	2.7%	0.6%	1.6%

Source: Higher Education Statistics Agency (HESA)

Notes

To prevent the identification of individuals, figures in the attached table are rounded to the nearest 5, with 0, 1, 2 rounded to 0. Due to rounding, the sum of numbers in each row or column may not match the total shown.