



Department for

**Infrastructure**

An Roinn

**Bonneagair**

[www.infrastructure-ni.gov.uk](http://www.infrastructure-ni.gov.uk)

# **TRAFFIC and TRAVEL INFORMATION**

## **2017**

INCORPORATING

**ANNUAL TRAFFIC CENSUS**

**AND**

**VARIATIONS IN TRAFFIC FLOW**



CONTENTS

INTRODUCTION

PART 1 – ANNUAL TRAFFIC CENSUS REPORT 2017

General information relating to Part 1 – Traffic Census	6
Table 1: Site location details – (listed by Road Number)	8
Table 2: 2017 Data availability for each counter point (listed by Census Point Number)	12
Table 3: 2017 Annual Average Daily Traffic Flow (AADT) (7 day) and Mean Weekday Peak Hour Flows (5 day) – summary of tables 4A, 4B & 5	17
Table 4A: 7 day Annual Average Directional Flows and Percentage Composition of Traffic – EURO 6 sites	22
Table 4B: 7 day Annual Average Directional Flows and Percentage Composition of Traffic – DoENI 5 sites	27
Table 5: 5 day Directional Flow Information	29

PART 2 – VARIATIONS IN TRAFFIC FLOW

General Information Relating to Part 2 – Variations in Traffic Flow	33
Table 6: Annual Average Daily Traffic (7 day) from 2007 - 2017	34
Table 7: Yearly variations in AADT (7 day) from 2013 - 2017	37
Table 8: Variation in Traffic Flow (7 day) between 2016 and 2017	42

Appendix A – Location of Historic Counter Sites

Table 9: Location of Historic Counter Sites (listed by Road Number)	44
---	----

Appendix B – Location of Census Points

Figure 1:	Londonderry Area	59
Figure 2:	Coleraine Area	59
Figure 3:	Enniskillen Area	60
Figure 4:	Location of Census Points and Annual Average Daily Traffic Flows for Northern Ireland	61

## **Introduction**

This Traffic and Travel Information Report is a composite document, comprising the following:

Part 1: Traffic Census data.

Part 2: Information on variation in traffic flows.

The collection of traffic data contributes to the effective management of the road network by providing information that assists in the allocation of DfI Roads' financial resources, the development of future proposals for the network and the planning of Winter Service provision.

In 2015, Traffic data was collected from 351 automatic traffic counting sites located throughout the road network in Northern Ireland. Since then resource limitations have necessitated a reduction in the number of permanent traffic counters, retaining only those that are fully automated. There were a total of 86 such sites operational across Northern Ireland in 2017.

Any enquiries about this report should be addressed to:

Head of Telematics  
DfI Roads – Eastern Division  
Traffic Information and Control Centre  
1b Airport Road  
Belfast  
BT3 9DY

**PART 1**

**ANNUAL TRAFFIC CENSUS REPORT  
2017**

## **General Information relating to Part 1 – Traffic Census**

1.1 Part 1 of this report contains detailed information relating to traffic flow collated from the 86 census points with 2017 data on the road network in Northern Ireland.

1.2 These census points are located on both the main and minor road networks.

Information is based on the **best available** data gathered during the course of the year.

Table 2 gives a breakdown of the data available for each site in 2017.

1.3 DfI Roads has historically classified vehicles using the DoENI5 classification scheme.

This classification scheme was specifically designed for DfI Roads in Northern Ireland and is therefore not directly comparable with any other class scheme used in the rest of the UK and further afield. To ensure the classification data we collect is available in a more widely recognised format DfI Roads have taken the decision to start collecting data using the EURO 6 classification scheme.

As DfI Roads move towards classifying all vehicles using the EURO 6 classification scheme there has been an unavoidable transition period. As a result of this transition period 71 of the sites classified vehicles using EURO 6 and 15 of the sites still classified vehicles using the old DoENI 5 in 2017.

A summary of the two classification schemes are given below:-

### DoENI5 CLASS SCHEME

Class 1	Car, Car & Trailer and Light Van
Class 2	Medium Goods Van and Minibus (<8.7m)
Class 3	Rigid Heavy Goods Vehicle (>8.7m)
Class 4	Articulated Vehicle and Rigid Heavy Goods Vehicle & Trailer
Class 5	Bus and Coach

### EURO 6 CLASS SCHEME

Class 1	Motorbike
Class 2	Car / Van
Class 3	Car / Van + Trailer
Class 4	Rigid HGV
Class 5	Articulated HGV
Class 6	Bus and Coach

1.4 Percentage HGV (HGV%) for the DoENI5 Classification scheme is based on Classes 3-5 inclusive and the HGV% for the EURO 6 Classification scheme is based on Classes 4-6 inclusive, **(Note: due to the parameters used in the two different classification schemes the HGV percentages derived from them are not directly comparable).**

1.5 The following notes are intended as clarification of the Traffic Census information contained in Tables 1, 2, 3 and 4.

- (a) Table 1 is included as a “location finder”. The sites are listed in route number order, (i.e. the road classification number).
- (b) Table 2 lists the sites by Census Point (CP) number and gives a breakdown of the data available for each site in 2017.
- (c) Tables 3, 4A, 4B and 5 provide the traffic data arranged by Census Point number. These tables also include route numbers and site locations.
- (d) Traffic flow volumes greater than 10 are rounded to the nearest multiple of 10.
- (e) 24 hour Annual Average Daily Traffic (AADT) flows are calculated using data from the 7 day week.
- (f) “Mean Peak Hour Flow” is the average peak hour flow based on a 5 day week comprising Monday to Friday inclusive.
- (g) % HGV is the percentage of the AADT in classes 3, 4 and 5 for sites that use the DoENI5 Classification scheme and classes 4, 5 and 6 for sites that use the EURO 6 Classification scheme.
- (h) Within the tables the term “Channel” relates to the direction of flow of the traffic.
- (i) Some cells within the tables are marked “-”. This means that either the data was considered to be unreliable, no information was available at that site or the site is unidirectional. Unidirectional sites have a “N/A” in Table 1 to represent the non-existent second channel.
- (j) Maps showing the locations of the census points are included in Appendix B of this report.

1.6 Information relating to sites that are no longer operational but have useful historic data is included in Appendix A.

**Table 1 - Site Location Details (listed by Road Number)**

This table is included as a ‘location finder’. The sites are listed by route number order, (i.e. the road classification number).

Route	CP No	Divn.	Location	Channel 1	Channel 2	Easting	Northing
A1	405	South	Dublin Road, Newry	To Border	To Newry	308331	323116
A1	410	South	Dromore – Banbridge, South of Old Banbridge Road	To Dromore	To Banbridge	318980	352194
A1	419	South	Loughbrickland – Newry, South of Moneymore Road	To Newry	To Belfast	309693	335636
A1	522	East	Lisburn - Hillsborough (at Harry's Road)	To Lisburn	To Hillsborough	325004	360426
A1	536	South	A1 Newry, North of A27 Junction	To Newry	To Belfast	307243	330343
A1	794	East	Lisburn Road at Dunluce Avenue	Northbound	Southbound	333093	372653
A2	117	East	Whitehead - Carrickfergus	To Carrick	To Whitehead	346847	391041
A2	119	North	Larne - Ballygalley, at Blackcave Tunnel	To Larne	To Carnlough	340390	404474
A2	209	East	Sydenham By-Pass, at George Best Belfast City Airport	To Belfast	From Belfast	337289	375624
A2	311	North	Coleraine - Portstewart, North of B185	To Coleraine	To Portstewart	284272	434252
A2	376	North	A2 Ballykelly Road, Limavady	To Londonderry	To Coleraine	264513	422865
A2	392	North	Duke Street, Londonderry	To Limavady	N/A	244025	416224
A2	443	South	Rostrevor Road, Warrenpoint, Co. Down	To Warrenpoint	To Rostrevor	316494	318305
A2	502	East	Belfast - Bangor, at Cultra, East of Folk Museum	To Belfast	To Bangor	342339	380522
A2	510	South	Donaghadee - Millisle, at Ballyvester	To Donaghadee	To Millisle	359320	378021
A2	793	East	Shore Road South of Jordanstown Road	Northbound	Southbound	336391	383399
A2	907	East	Belfast Road, Bangor Side of Ballyrobert Road Junction	To Belfast	N/A	345170	380735
A2	908	East	Belfast Road, Belfast Side of Ballyrobert Road Junction	To Belfast	N/A	344820	380944
A2	910	East	Bangor Road Cultra, Before Whinney Hill	To Belfast	N/A	341388	379957
A3	235	East	Moira Road, Lisburn, West of Lissue Industrial Estate	To Lisburn	To Moira	322801	363099



Traffic and Travel Information 2017

Route	CP No	Divn.	Location	Channel 1	Channel 2	Easting	Northing
A3	442	South	Monaghan Road, Middletown, Co Armagh	To Middletown	To Armagh	277662	338821
A3	670	West	Clones Road Cavan side of B533	To Clones	To Cavan	242820	319936
A4	615	West	Enniskillen – Belcoo (East of Letterbreen near Moybrone/ Station Road Cross Roads)	To Enniskillen	To Belcoo	218548	340453
A4	629	West	Enniskillen - Fivemiletown (West of B514 at Cultiagh)	To Enniskillen	To Fivemiletown	228380	341079
A5	391	North	Victoria Road, Londonderry, at Bolies	To City Centre	To Newbuildings	243136	415386
A5	610	West	Omagh – Ballygawley, South of B122 (past junction of U1306)	To Omagh	To Ballygawley	247104	369571
A5	645	West	Omagh By-Pass, at footbridge	To Enniskillen	To Ballygawley	244879	372257
A5	648	West	Strabane By-Pass (Barnhill Road West of Derry Road)	To Londonderry	To Omagh	234747	398964
A5	660	West	Omagh – Ballygawley, South of Crevenagh Road Roundabout	To Omagh	To Ballygawley	246367	370901
A5	675	West	A5 Tullyvar Road, Ballygawley	To Ballygawley	To Aughnacloy	263538	356195
A6	102	North	Toome - Randalstown, at Drumbeg	To Toome	To Randalstown	300353	389975
A6	122	West	Castledawson – Dungiven (North West of A31 near roundabout)	To Castledawson	To Dungiven	291603	392792
A6	149	East	Belfast Road, Mallusk	To Mallusk	To Templepatrick	323667	385747
A6	151	North	Between Templepatrick Roundabout & Kilmakee Roundabout	To International Airport	To Ballyclare	322365	385329
A6	306	North	Dungiven - Londonderry, East of B74	To Dungiven	To Londonderry	268217	409441
A7	513	South	Belfast Road, Downpatrick, at Quoile	To Downpatrick	To Belfast	348079	345569
A8	135	East	Larne - Ballynure, at Craiginorne	To Larne	From Larne	335000	398270
A8	207	East	Sandyknowes (Junction 4) – Corr's Corner	To Belfast	From Belfast	330644	383870
A12	213	East	Westlink, Belfast, South of Roden Street	To M2	To M1	332421	373465
A12	290	East	Westlink, Clifton Street, towards M1	Main Carriageway	On Slip	333512	375123
A12	291	East	Westlink, Clifton Street, towards M2	Main Carriageway	Off Slip	333513	375162
A20	444	South	Portaferry Road, Kircubbin, Co. Down	To Kircubbin	To Newtownards	359411	364538

Traffic and Travel Information 2017

Route	CP No	Divn.	Location	Channel 1	Channel 2	Easting	Northing
A20	918	East	Upper Newtownards Road, Belfast at bus-stop opposite Summerhill Avenue (Outbound)	To Newtownards	N/A	339884	373982
A20	921	East	Upper Newtownards Road, Belfast at Stormont entrance (Inbound)	To Belfast	N/A	339623	373953
A21	507	South	Bangor Road, Newtownards	To Bangor	To Newtownards	349852	376100
A22	512	South	Comber - Killyleagh, at Comber	To Killyleagh	To Comber	346309	368460
A24	800	East	Ormeau Road at Knockbreda Park	To City Centre	To Carryduff	334969	370997
A26	109	North	Nutts Corner - Moira, at Nutts Corner	To Nutts Corner	To Moira	319528	377642
A26	310	North	Coleraine - Ballymoney, South East of Ring Road	To Coleraine	To Belfast	287079	430909
A28	418	South	Armagh - Newry, at Markethill	To Newry	To Armagh	295758	340565
A29	308	North	Coleraine - Limavady, at Fernlester	To Coleraine	To Limavady	283679	430184
A29	309	North	Coleraine - Garvagh, South of B66	To Coleraine	To Garvagh	284700	419770
A29	325	North	Coleraine Ring Road, between A29 - B185	To Portstewart	To Portrush Road Roundabout	285080	435171
A31	123	West	Moneymore Road, Magherafelt	To Magherafelt	To Moneymore	289159	389759
A31	128	West	Castledawson - Magherafelt (South West of Bowmans Road)	To Magherafelt	To Castledawson	291431	392200
A32	617	West	Enniskillen - Irvinestown (North of Cherrymount Roundabout)	To Enniskillen	From Enniskillen	223755	345997
A32	665	West	Enniskillen Road, Irvinestown	To Enniskillen	To Irvinestown	224369	357090
A34	612	West	Lisnaskea - Maguiresbridge (Lisnagole Road near St Mary's Primary School)	To Maguiresbridge	To Lisnaskea	234952	337944
A36	131	North	Ballymena - Larne, at Moorfield	To Ballymena	To Larne	315257	400640
A44	318	North	Ballycastle - Armoy, East of B67	To Ballycastle	To Coleraine	309639	439472
A47	674	West	Boa Island Road, Belleek	To Belleek	To Boa Island	194765	359419
A48	508	South	Donagadee Road, Newtownards	To Newtownards	To Donaghadee	349949	374578
A52	789	North	Ballyutoag Road, Co. Antrim	Southbound	Northbound	325786	378595
A52	797	East	Crumlin Road, Belfast side Horseshoe bend	To Belfast	To Crumlin	331181	378163

Traffic and Travel Information 2017

Route	CP No	Divn.	Location	Channel 1	Channel 2	Easting	Northing
A52	799	East	Crumlin Road at Ingledene Park	To City Centre	To Crumlin	331339	376060
A54	321	North	Coleraine - Kilrea, South of A29	To Coleraine	To Kilrea	285114	430494
A55	221	East	Upper Knockbreda Road, Belfast	To Saintfield Road	To Castlereagh Road	335838	370822
A55	922	East	Knock Road, Castlereagh, at Shandon Park	To Upper Knockbreda Road	To Upper Newtownards Road	338135	372569
A515	353	North	Foyle Bridge, Londonderry	To Culmore	To Caw	245907	418509
B39	159	North	Seven Mile Straight, Ballyrobin	To Loanends	To Antrim	319936	383022
B52	632	West	Garrison - Belleek (South of Farancassidy Cross Roads at Brollagh School)	To Belleek	To Garrison	194322	356324
B62	315	North	Ballymoney - Portrush, North of A26	To Ballymoney	To Portrush	294051	427416
B64	331	North	Dungiven - Garvagh, at Dungiven	To Dungiven	To Garvagh	269358	409928
B101	234	East	Pond Park Road, Lisburn	To Lisburn	To International Airport	324772	366974
C297	532	East	Ballynahinch Road, Lisburn	To Lisburn	From Lisburn	327652	363284
M1	201	East	Broadway (Junction 1) - Stockman's Lane (Junction 2)	To Belfast	From Belfast	331678	372509
M1	227	East	Stockman's Lane Junction (above roundabout)	To Belfast	From Belfast	330710	371218
M1	230	East	Blacks Road on – slip (Junction 3)	One Way Traffic Flow	N/A	329697	369723
M1	231	East	Blacks Road off – slip (Junction 3)	One Way Traffic Flow	N/A	329791	369673
M1	520	East	Blacks Road (Junction 3) – Saintfield Road (Junction 6)	To Belfast	From Belfast	328385	364375
M2	202	East	Fortwilliam Interchange Inbound (Junction 1)	Main Carriageway	N/A	334392	377404
M2	203	East	Fortwilliam Interchange Outbound (Junction 1)	Main Carriageway	N/A	334437	378014
M2	204_1	East	Greencastle (Junction 2) – Sandyknowes (Junction 4)	From Belfast	N/A	332921	381233
M2	204_2	East	Greencastle (Junction 2) – Sandyknowes (Junction 4)	To Belfast	N/A	332938	381266
M2	205	East	Sandyknowes (Junction 4) – Templepatrick (Junction 5)	To Belfast	From Belfast	326856	385319
M5	206	East	Greencastle (Junction 2) - Whiteabbey	To Belfast	From Belfast	334643	379556

**Table 2 – 2017 Data availability for each counter point (listed by Census Point Number)**

This table contains information on the availability of data with the sites listed by Census Point Number.

<b>Table 2 – 2017 Data availability for each counter point (listed by Census Point Number)</b>				
<b>CP No</b>	<b>Route</b>	<b>Divn.</b>	<b>Location</b>	<b>Data Availability</b>
102	A6	North	Toome - Randalstown, at Drumbeg	1-5 Jan, 28 Feb - 27 Sept
109	A26	North	Nutts Corner - Moira, at Nutts Corner	1 Jan - 2 Nov
117	A2	East	Whitehead - Carrickfergus	Full Year
119	A2	North	Larne - Ballygalley, at Blackcave Tunnel	1 Jan - 4 Sept, 22 Sept - 3 Oct
122	A6	West	Castledawson – Dungiven (North West of A31 near roundabout)	Full Year
123	A31	West	Moneymore Road, Magherafelt	Full Year
128	A31	West	Castledawson - Magherafelt (South West of Bowmans Road)	Full Year
131	A36	North	Ballymena - Larne, at Moorfield	Full Year
135	A8	East	Larne - Ballynure, at Craiginorne	1 Jan - 15 Dec, 17 - 31 Dec
149	A6	East	Belfast Road, Mallusk	1 Jan - 27 Aug, 5-7 Sept, 11-15 Sept, 18-22 Sept, 25 Sept - 31Dec
151	A6	North	Between Templepatrick Roundabout & Kilmakee Roundabout	13 Mar - 30 Jun
159	B39	North	Seven Mile Straight, Ballyrobin	1 Jan - 18 Mar, 27 Mar - 17 Jul, 19 Jul - 31 Dec
201	M1	East	Broadway (Junction 1) – Stockman's Lane (Junction 2)	1-24 Jan, 26 Jan - 15 Apr, 16 Jun - 15 Oct, 17-28 Oct, 30 Oct - 20 Nov, 23 Nov - 31 Dec
202	M2	East	Fortwilliam Interchange Inbound (Junction 1)	1-24 Jan, 26 Jan - 11 Sep, 13 Sep - 15 Oct, 17-28 Oct, 30 Oct - 20 Nov, 23 Nov - 31 Dec
203	M2	East	Fortwilliam Interchange Outbound (Junction 1)	1-24 Jan, 26 Jan - 15 Oct, 17-28 Oct, 30 Oct - 20 Nov, 23 Nov - 31 Dec
204_1	M2	East	Greencastle (Junction 2) – Sandyknowes (Junction 4) (From Belfast)	1-24 Jan, 26 Jan-5 Jun, 7 Jun-15 Oct, 17-28 Oct, 30 Oct-20 Nov, 23 Nov-31 Dec
204_2	M2	East	Greencastle (Junction 2) – Sandyknowes (Junction 4) (To Belfast)	1-24 Jan, 26 Jan - 28 Oct, 30 Oct - 20 Nov, 23 Nov - 31 Dec

**Table 2 – 2017 Data availability for each counter point  
(listed by Census Point Number)**

CP No	Route	Divn.	Location	Data Availability
205	M2	East	Sandyknowes (Junction 4) – Templepatrick (Junction 5)	1-24 Jan, 26 Jan - 15 Oct, 17-28 Oct, 30 Oct - 20 Nov, 23 Nov - 31 Dec
206	M5	East	Greencastle (Junction 2) - Whiteabbey	1-24 Jan, 26 Jan - 28 Oct, 30 Oct - 20 Nov, 23 Nov - 31 Dec
207	A8	East	Sandyknowes (Junction 4) – Corr's Corner	1-24 Jan, 26 Jan - 28 Oct, 30 Oct - 20 Nov, 23 Nov - 31 Dec
209	A2	East	Sydenham By-Pass, at George Best Belfast City Airport	1 Jan - 24 Apr, 2 Nov - 31 Dec
213	A12	East	Westlink, Belfast, South of Roden Street	1-12 & 19-24 Jan, 26 Jan - 3 May, 6 May - 26 Oct, 31 Oct - 20 Nov, 23 Nov - 31 Dec
221	A55	East	Upper Knockbreda Road, Belfast	11 May - 31 Dec
227	M1	East	Stockman's Lane Junction (above roundabout)	1-24 Jan, 26 Jan - 18 Sept, 20 Sept - 28 Oct, 30 Oct - 20 Nov, 23 Nov - 31 Dec
230	M1	East	Blacks Road on – slip (Junction 3)	1-24 Jan, 26 Jan - 28 Oct, 30 Oct - 20 Nov, 23 Nov - 31 Dec
231	M1	East	Blacks Road off – slip (Junction 3)	1-24 Jan, 26 Jan - 11 June, 13 June - 28 Oct, 30 Oct - 20 Nov, 23 Nov - 31 Dec
234	B101	East	Pond Park Road, Lisburn	21 Feb - 31 Dec
235	A3	East	Moira Road, Lisburn, West of Lissue Industrial Estate	1 Jan - 12 Oct, 8 Nov - 31 Dec
290	A12	East	Westlink, Clifton Street, towards M1	1-11 & 15-21 Jan, 13-21 Feb, 1-12 Mar, 15 Mar - 4 Apr, 6-11 & 13-16 Apr, 21 Apr - 10 May, 12 May - 18 Jun, 24-25 Jun, 29 Jun - 15 Aug, 17 Aug - 13 Sept, 15 Sept - 8 Oct, 12-24 Oct, 30 Oct - 10 Nov, 12-13 & 17 Nov, 24 Nov - 31 Dec
291	A12	East	Westlink, Clifton Street, towards M2	1-24 Jan, 26 Jan - 28 Oct, 30 Oct - 20 Nov, 23 Nov - 31 Dec
306	A6	North	Dungiven - Londonderry, East of B74	Full Year
308	A29	North	Coleraine - Limavady, at Fernlester	1-15 Jan, 7-31 Mar, 9 Apr - 22 Jun, 6-31 Dec
309	A29	North	Coleraine - Garvagh, South of B66	7 Mar - 31 Dec
310	A26	North	Coleraine - Ballymoney, South East of Ring Road	21 Mar - 17 Jul, 6-31 Dec
311	A2	North	Coleraine - Portstewart, North of B185	Full Year
315	B62	North	Ballymoney - Portrush, North of A26	Full Year

**Table 2 – 2017 Data availability for each counter point  
(listed by Census Point Number)**

CP No	Route	Divn.	Location	Data Availability
318	A44	North	Ballycastle - Armoy, East of B67	1 Jan - 9 Apr
321	A54	North	Coleraine - Kilrea, South of A29	21 Mar - 31 Dec
325	A29	North	Coleraine Ring Road, between A29 - B185	1 Jan - 15 Jun
331	B64	North	Dungiven - Garvagh, at Dungiven	27 Mar - 31 Dec
353	A515	North	Foyle Bridge, Londonderry	1 Jan - 6 Apr, 29-30 Apr, 1 Jun - 11 Jul
376	A2	North	A2 Ballykelly Road, Limavady	1 Jan - 8 Jul
391	A5	North	Victoria Road, Londonderry, at Bolies	29 Mar - 14 Jul, 1 Aug - 9 Oct, 28 Oct - 31 Dec
392	A2	North	Duke Street, Londonderry (To Limavady)	15 Mar - 31 Dec
405	A1	South	Dublin Road, Newry	1 Jan - 3 Dec
410	A1	South	Dromore – Banbridge, South of Old Banbridge Road	1-11 & 13-31 Jan, 3 Feb - 30 Apr, 15 May - 19 Jun, 27-30 Jun, 28 Jul - 4 Aug, 7-12, 14-16 & 19-29 Aug, 2-6 & 14-17 Sept, 21 Sept - 15 Oct, 19 Oct - 31 Dec
418	A28	South	Armagh - Newry, at Markethill	Full Year
419	A1	South	Loughbrickland – Newry, South of Moneymore Road	1-15 Jan, 17 Jan - 15 Feb, 18 Feb - 27 May, 29 May - 19 Jul, 21-23 & 25- 29 Jul, 31 Jul - 10 Dec
442	A3	South	Monaghan Road, Middletown, Co Armagh	23 Jun - 31 Dec
443	A2	South	Rostrevor Road, Warrenpoint, Co. Down	1-23 Mar, 28 Mar - 10 Apr, 12-30 Apr, 2-5, 12-20, 23-25 & 27 May, 29 May - 1 Jun, 5-9, 11, 13-14, 16-17, 19-25 & 27-30 Jun, 3-4, 6-7, 13-14 & 20-30 Jul, 1-2, 4-12, 14, 16-18, 20-24 & 26 Aug, 28 Aug - 4 Sept, 6 Sept - 4 Oct, 6-16 Oct, 17 Oct - 31 Dec
444	A20	South	Portaferry Road, Kircubbin, Co. Down	23 Mar - 31 Dec
502	A2	East	Belfast - Bangor, at Cultra, East of Folk Museum	14 Mar - 6 Jun, 30 Jun - 3 Aug, 24 Aug - 31 Dec
507	A21	South	Bangor Road, Newtownards	1 Jan - 9 Apr, 22 Apr - 31 Dec

**Table 2 – 2017 Data availability for each counter point  
(listed by Census Point Number)**

CP No	Route	Divn.	Location	Data Availability
508	A48	South	Donagadee Road, Newtownards	1 Jan - 20 Feb, 22 Feb - 4 Mar, 6-10 & 12-21 Mar, 23 Mar - 11 May, 13 & 15-30 May, 2-9, 11-17 & 19 Jun, 21 Jun - 9 Jul, 11-18 & 20-28 Jul, 31 Jul - 2 Aug, 4-7 & 9-12, 14 Aug - 4 Sept, 6-14 Sept, 16 Sept - 10 Oct, 12-17, 20-24 & 26-31 Oct, 2-6, 8-15 & 17 Nov, 19 Nov - 13 Dec, 15-31 Dec
510	A2	South	Donaghadee - Millisle, at Ballyvester	1-15 Jan, 23 Mar - 31 Dec
512	A22	South	Comber - Killyleagh, at Comber	Full Year
513	A7	South	Belfast Road, Downpatrick, at Quoile	1 Jan - 6 Apr
520	M1	East	Blacks Road (Junction 3) – Saintfield Road (Junction 6)	1-11 & 15-24 Jan, 26 Jan - 22 Feb, 24 Feb - 6 Mar, 8-13 & 23 Mar, 16, 18-24 & 29 Apr, 14 Jun, 16 Jun - 12 Sept, 15 Sept - 15 Oct, 18-28 Oct, 30 Oct - 20 Nov, 24 Nov - 31 Dec
522	A1	East	Lisburn - Hillsborough (at Harry's Road)	1 Jan - 30 Jun, 25 Oct - 17 Nov
532	C297	East	Ballynahinch Road, Lisburn	21 Feb - 3 Apr, 6 May - 19 Nov
536	A1	South	A1 Newry, North of A27 Junction	8 Jun - 17 Jul, 19 Jul - 31 Dec
610	A5	West	Omagh – Ballygawley, South of B122 (past junction of U1306)	Full Year
612	A34	West	Lisnaskea - Maguiresbridge (Lisnagole Road near St Mary's Primary School)	1 Jan - 16 Apr, 19 Apr - 5 Sept, 7 Sept - 31 Dec
615	A4	West	Enniskillen – Belcoo (East of Letterbreen near Moybrone/ Station Road Cross Roads)	1 Jan - 5 Mar, 1 Mar - 6 May, 10 May - 31 Dec
617	A32	West	Enniskillen - Irvinestown (North of Cherrymount Roundabout)	1 Jan - 2 Jul, 5-7 Jul, 9 Jul - 31 Dec
629	A4	West	Enniskillen - Fivemiletown (West of B514 at Cultiagh)	1 Mar - 8 Oct, 4 Nov - 11 Dec, 16-31 Dec
632	B52	West	Garrison - Belleek (South of Farancassidy Cross Roads at Brollagh School)	6 Apr - 31 Dec
645	A5	West	Omagh By-Pass, at footbridge	11 Mar - 17 May, 31 May - 24 Jun, 6-16 Jul, 5 Aug - 14 Sept, 19 Oct - 23 Nov, 7- 26 Dec
648	A5	West	Strabane By-Pass (Barnhill Road West of Derry Road)	1 Jan - 16 Sept, 23-28 Sept, 9-14 Oct, 26 Oct - 31 Dec
660	A5	West	Omagh – Ballygawley, South of Crevenagh Road Roundabout	Full Year
665	A32	West	Enniskillen Road, Irvinestown	Full Year

**Table 2 – 2017 Data availability for each counter point  
(listed by Census Point Number)**

<b>CP No</b>	<b>Route</b>	<b>Divn.</b>	<b>Location</b>	<b>Data Availability</b>
670	A3	West	Clones Road Cavan side of B533	1 Jan - 4 Jun, 6 Jun - 31 Dec
674	A47	West	Boa Island Road, Belleek	Full Year
675	A5	West	A5 Tullyvar Road, Ballygawley	Full Year
789	A52	North	Ballyutoag Road, Co. Antrim	1 Aug - 31 Dec
793	A2	East	Shore Road South of Jordanstown Road	1 Jan - 18 Mar, 20 Mar - 29 Jun, 1-3 Jul, 5 Jul - 31 Dec
794	A1	East	Lisburn Road at Dunluce Avenue	Full Year
797	A52	East	Crumlin Road, Belfast side Horseshoe bend	17 Feb - 18 May, 31 May - 16 Sept, 23 Sept - 31 Dec
799	A52	East	Crumlin Road at Ingledene Park	1 Jan - 20 Aug, 31 Aug - 31 Dec
800	A24	East	Ormeau Road at Knockbreda Park	17 Feb - 8 May, 27 May - 1 Jun, 18 Jun - 1 Aug, 2-12 Sept, 15 Sept - 3 Dec
907	A2	East	Belfast Road, Bangor Side of Ballyrobert Road Junction	1-22 Jan, 24 Jan - 24 Jun, 30 Jun - 2 Sept, 15 Sept - 2 Dec
908	A2	East	Belfast Road, Belfast Side of Ballyrobert Road Junction	14 Mar - 31 Dec
910	A2	East	Bangor Road Cultra, Before Whinney Hill	14 Mar - 9 Jul, 26 Jul - 2 Dec
918	A20	East	Upper Newtownards Road, Belfast at bus-stop opposite Summerhill Avenue (Outbound)	17 Feb - 2 Jun, 6-21 Jun, 30 Jun - 9 Jul, 26 Jul - 17 Sept
921	A20	East	Upper Newtownards Road, Belfast at Stormont entrance (Inbound)	1 Jan - 23 Jul, 1 Sept - 9 Oct
922	A55	East	Knock Road, Castlereagh, at Shandon Park	24-28 Feb, 6 Mar - 15 Apr, 1 Nov - 31 Dec



**Table 3 - 2017 Annual Average Daily Traffic Flow (AADT) (7 day) and Mean Weekday Peak Hour Flows (5 day) – summary of tables 4A, 4B & 5**

This table contains the Average Annual Daily Traffic (AADT) flows (7 day) based on traffic flows over the seven day week and the percentage of Heavy Goods Vehicles (%HGV) for each site, (see Tables 4A and 4B for a breakdown by class). The table also contains the weekday average peak hour flows (5 day) and the time that the peak hours commence. The flows are for both directions of travel combined. The sites are listed in order of Census Point Number for ease of reference.

**Table 3 – 2017 Annual Average Daily Traffic Flow (AADT) (7 day) and Mean Weekday Peak Hour Flows (5 day)**

C P No.	ROUTE No.	LOCATION	7 day flows		5 day flows			
			24 HR AADT	% HGV	MEAN PEAK HOUR (HOUR STARTING - WEEKDAYS)			
					AM	Start	PM	Start
102	A6	Toome - Randalstown, at Drumbeg	20,270	14.6	1,540	08:00	1,880	17:00
109	A26	Nutts Corner - Moira, at Nutts Corner	13,500	12.6	1,410	08:00	1,510	17:00
117	A2	Whitehead - Carrickfergus	7,320	4.3	500	11:00	600	16:00
119	A2	Larne - Ballygalley, at Blackcave Tunnel	3,270	3.2	250	11:00	290	15:00
122	A6	Castledawson – Dungiven (North West of A31 near roundabout)	15,340	12.7	1,210	08:00	1,490	17:00
123	A31	Moneymore Road, Magherafelt	7,080	4.5	640	08:00	630	17:00
128	A31	Castledawson - Magherafelt (South West of Bowmans Road)	11,550	5.1	800	08:00	900	17:00
131	A36	Ballymena - Larne, at Moorfield	5,690	12.5	600	08:00	590	17:00
135	A8	Larne - Ballynure, at Craiginorne	1,810	10.8	160	08:00	170	17:00
149	A6	Belfast Road, Mallusk	3,910	8.1	370	08:00	380	17:00
151	A6	Between Templepatrick Roundabout & Kilmakee Roundabout	16,740	7.8	1,340	08:00	1,520	17:00
159	B39	Seven Mile Straight, Ballyrobin	2,820	4.9	370	08:00	320	17:00
201	M1	Broadway (Junction 1) – Stockman's Lane (Junction 2)	91,610	5.2	6,710	07:00	6,990	15:00

**Table 3 – 2017 Annual Average Daily Traffic Flow (AADT) (7 day) and Mean Weekday Peak Hour Flows (5 day)**

C P No.	ROUTE No.	LOCATION	7 day flows		5 day flows			
			24 HR AADT	% HG V	MEAN PEAK HOUR (HOUR STARTING - WEEKDAYS)			
					AM	Start	PM	Start
202	M2	Fortwilliam Interchange Inbound (Junction 1)	49,970	3.8	5,780	07:00	3,370	16:00
203	M2	Fortwilliam Interchange Outbound (Junction 1)	51,900	3.7	3,140	08:00	5,990	16:00
204-1	M2	Greencastle (Junction 2) – Sandyknowes (Junction 4) (From Belfast)	35,330	6.5	2,260	08:00	4,260	16:00
204-2	M2	Greencastle (Junction 2) – Sandyknowes (Junction 4) (To Belfast)	34,890	6.7	4,310	07:00	2,390	17:00
205	M2	Sandyknowes (Junction 4) – Templepatrick (Junction 5)	48,610	5.9	4,340	07:00	4,680	16:00
206	M5	Greencastle (Junction 2) - Whiteabbey	32,730	2.1	3,110	08:00	3,040	16:00
207	A8	Sandyknowes (Junction 4) – Corr's Corner	15,530	7.0	1,520	07:00	1,600	17:00
209	A2	Sydenham By-Pass, at George Best Belfast City Airport	58,620	5.1	4,590	08:00	5,290	16:00
213	A12	Westlink, Belfast, South of Roden Street	97,160	5.4	7,080	07:00	7,410	16:00
221	A55	Upper Knockbreda Road, Belfast	33,390	3.4	2,940	08:00	3,070	17:00
227	M1	Stockman's Lane Junction (above roundabout)	70,500	5.5	4,630	11:00	5,540	13:00
230	M1	Blacks Road on – slip (Junction 3)	20,750	2.2	2,050	08:00	1,390	13:00
231	M1	Blacks Road off – slip (Junction 3)	19,030	2.2	1,260	11:00	1,650	15:00
234	B101	Pond Park Road, Lisburn	8,300	7.7	850	08:00	890	17:00
235	A3	Moira Road, Lisburn, West of Lissue Industrial Estate	12,020	7.5	1,050	08:00	1,090	17:00
290	A12	Westlink, Clifton Street, towards M1	36,630	6.2	2,880	07:00	2,640	14:00
291	A12	Westlink, Clifton Street, towards M2	45,990	5.8	3,040	07:00	3,690	16:00
306	A6	Dungiven - Londonderry, East of B74	16,080	10.1	1,180	08:00	1,500	17:00
308	A29	Coleraine - Limavady, at Fernlester	16,930	6.0	1,370	08:00	1,570	17:00
309	A29	Coleraine - Garvagh, South of B66	5,610	7.3	460	08:00	530	17:00

**Table 3 – 2017 Annual Average Daily Traffic Flow (AADT) (7 day) and Mean Weekday Peak Hour Flows (5 day)**

C P No.	ROUTE No.	LOCATION	7 day flows		5 day flows			
			24 HR AADT	% HG V	MEAN PEAK HOUR (HOUR STARTING - WEEKDAYS)			
					AM	Start	PM	Start
310	A26	Coleraine - Ballymoney, South East of Ring Road	16,950	5.2	1,400	08:00	1,580	17:00
311	A2	Coleraine - Portstewart, North of B185	8,050	2.7	510	11:00	660	16:00
315	B62	Ballymoney - Portrush, North of A26	8,180	5.2	610	08:00	730	17:00
318	A44	Ballycastle - Armoy, East of B67	6,390	5.0	570	08:00	580	16:00
321	A54	Coleraine - Kilrea, South of A29	6,970	2.1	580	08:00	630	17:00
325	A29	Coleraine Ring Road, between A29 - B185	6,990	3.7	650	08:00	640	16:00
331	B64	Dungiven - Garvagh, at Dungiven	3,780	7.4	280	08:00	440	17:00
353	A515	Foyle Bridge, Londonderry	34,670	5.2	2,990	08:00	3,170	17:00
376	A2	A2 Ballykelly Road, Limavady	16,550	6.5	1,530	08:00	1,590	17:00
391	A5	Victoria Road, Londonderry, at Bolies	16,920	7.7	1,210	08:00	1,440	17:00
392	A2	Duke Street, Londonderry (To Limavady)	14,130	6.1	900	08:00	1,370	17:00
405	A1	Dublin Road, Newry	25,070	15.3	2,250	08:00	2,390	17:00
410	A1	Dromore – Banbridge, South of Old Banbridge Road	31,490	11.9	2,600	08:00	3,000	17:00
418	A28	Armagh - Newry, at Markethill	10,470	12.7	950	08:00	1,010	17:00
419	A1	Loughbrickland – Newry, South of Moneymore Road	27,340	13.4	2,390	08:00	2,590	17:00
442	A3	Monaghan Road, Middletown, Co Armagh	3,730	13.2	270	08:00	310	17:00
443	A2	Rostrevor Road, Warrenpoint, Co. Down	12,220	6.3	950	08:00	1,130	17:00
444	A20	Portaferry Road, Kircubbin, Co. Down	7,590	5.7	670	07:00	740	17:00
502	A2	Belfast - Bangor, at Cultra, East of Folk Museum	36,330	3.2	3,020	07:00	3,360	16:00
507	A21	Bangor Road, Newtownards	21,800	3.8	1,920	08:00	1,860	16:00

**Table 3 – 2017 Annual Average Daily Traffic Flow (AADT) (7 day) and Mean Weekday Peak Hour Flows (5 day)**

C P No.	ROUTE No.	LOCATION	7 day flows		5 day flows			
			24 HR AADT	% HG V	MEAN PEAK HOUR (HOUR STARTING - WEEKDAYS)			
					AM	Start	PM	Start
508	A48	Donagadee Road, Newtownards	10,540	4.5	720	08:00	950	17:00
510	A2	Donaghadee - Millisle, at Ballyvester	4,910	4.1	320	08:00	400	16:00
512	A22	Comber - Killyleagh, at Comber	9,660	5.2	830	08:00	950	16:00
513	A7	Belfast Road, Downpatrick, at Quoile	11,670	6.5	1,090	08:00	1,050	17:00
520	M1	Blacks Road (Junction 3) – Saintfield Road (Junction 6)	58,920	6.9	4,410	07:00	4,900	16:00
522	A1	Lisburn - Hillsborough (at Harry's Road)	42,700	8.8	3,200	08:00	3,800	17:00
532	C297	Ballynahinch Road, Lisburn	3,720	4.0	500	08:00	400	17:00
536	A1	A1 Newry, North of A27 Junction	22,200	13.6	1,950	08:00	2,090	17:00
610	A5	Omagh – Ballygawley, South of B122 (past junction of U1306)	13,870	-	1,120	08:00	1,340	17:00
612	A34	Lisnaskea - Maguiresbridge (Lisnagole Road near St Mary's Primary School)	8,910	10.5	720	08:00	830	17:00
615	A4	Enniskillen – Belcoo (East of Letterbreen near Moybrone/ Station Road Cross Roads)	3,940	6.7	280	08:00	350	17:00
617	A32	Enniskillen - Irvinestown (North of Cherrymount Roundabout)	16,830	6.4	1,590	08:00	1,570	17:00
629	A4	Enniskillen - Fivemiletown (West of B514 at Cultiagh)	12,240	7.9	1,000	08:00	1,070	17:00
632	B52	Garrison - Belleek (South of Farancassidy Cross Roads at Brollagh School)	2,060	4.3	140	09:00	180	17:00
645	A5	Omagh By-Pass, at footbridge	23,030	12.6	1,670	08:00	1,870	17:00
648	A5	Strabane By-Pass (Barnhill Road West of Derry Road)	14,600	8.0	1,200	08:00	1,380	17:00
660	A5	Omagh – Ballygawley, South of Crevenagh Road Roundabout	16,790	11.9	1,260	08:00	1,510	17:00
665	A32	Enniskillen Road, Irvinestown	7,160	2.8	620	08:00	710	17:00
670	A3	Clones Road Cavan side of B533	4,680	14.5	360	08:00	420	17:00
674	A47	Boa Island Road, Belleek	2,460	6.1	150	11:00	200	17:00

**Table 3 – 2017 Annual Average Daily Traffic Flow (AADT) (7 day) and Mean Weekday Peak Hour Flows (5 day)**

C P No.	ROUTE No.	LOCATION	7 day flows		5 day flows			
			24 HR AADT	% HG V	MEAN PEAK HOUR (HOUR STARTING - WEEKDAYS)			
					AM	Start	PM	Start
675	A5	A5 Tullyvar Road, Ballygawley	8,820	17.3	600	08:00	760	17:00
789	A52	Ballyutoag Road, Co. Antrim	4,840	7.8	720	08:00	590	17:00
793	A2	Shore Road South of Jordanstown Road	29,210	3.5	2,230	08:00	2,470	16:00
794	A1	Lisburn Road at Dunluce Avenue	16,900	3.8	1,190	08:00	1,290	17:00
797	A52	Crumlin Road, Belfast side Horseshoe bend	10,410	4.9	1,190	08:00	1,110	17:00
799	A52	Crumlin Road at Ingledene Park	19,580	4.3	1,440	08:00	1,620	17:00
800	A24	Ormeau Road at Knockbreda Park	26,350	4.1	1,680	11:00	1,840	16:00
907	A2	Belfast Road, Bangor Side of Ballyrobert Road Junction	14,590	4.0	2,060	07:00	920	16:00
908	A2	Belfast Road, Belfast Side of Ballyrobert Road Junction	16,930	3.6	2,360	07:00	1,060	16:00
910	A2	Bangor Road Cultra, Before Whinney Hill	18,490	3.8	2,170	07:00	1,260	16:00
918	A20	Upper Newtownards Road, Belfast at bus-stop opposite Summerhill Avenue (Outbound)	15,220	4.9	920	08:00	1,270	17:00
921	A20	Upper Newtownards Road, Belfast at Stormont entrance (Inbound)	16,190	5.1	1,490	07:00	1,190	16:00
922	A55	Knock Road, Castlereagh, at Shandon Park	34,290	2.4	2,870	08:00	3,020	17:00

**Table 4A – 7 day Annual Average Directional Flows and Percentage Composition of Traffic – EURO 6 sites**

The main Vehicle Classification system now used by DfI Roads (EURO 6) is shown in the following table. There are six classes as follows:-

Vehicle Class	Description
Class 1	Motorbike
Class 2	Car / Van
Class 3	Car / Van + Trailer
Class 4	Rigid HGV
Class 5	Articulated HGV
Class 6	Bus & Coach

Table 4A contains the 7 day Annual Average Daily Traffic flow (AADT) by direction and the percentage traffic composition of the AADT. The sites are listed by Census Point number.

<b>Table 4A – 7 day Annual Average Directional Flows and Percentage Composition of Traffic</b>											
C P No.	ROUTE No.	LOCATION	24HR 7 DAY flow								
			Directional and Total			Percentage Traffic Composition					
			CH. 1	CH. 2	Total AADT	Motorbike	Car / Van	Car / Van + Trailer	HGV		
									Rigid HGV	Artic HGV	Bus / Coach
102	A6	Toome - Randalstown, at Drumbeg	10,230	10,040	20,270	0.2	84.8	0.4	7.9	4.5	2.2
109	A26	Nutts Corner - Moira, at Nutts Corner	6,760	6,740	13,500	0.4	85.6	1.4	7.1	5.3	0.2
117	A2	Whitehead - Carrickfergus	3,640	3,680	7,320	0.9	94.4	0.4	3.2	0.6	0.5
119	A2	Larne - Ballygalley, at Blackcave Tunnel	1,510	1,760	3,270	2.6	93.5	0.7	2.2	0.2	0.8
122	A6	Castledawson – Dungiven (North West of A31 near roundabout)	7,680	7,660	15,340	0.2	86.7	0.4	7.1	3.5	2.1
123	A31	Moneymore Road, Magherafelt	3,600	3,480	7,080	0.1	94.8	0.6	3.2	0.6	0.7
128	A31	Castledawson - Magherafelt (South West of Bowmans Road)	6,100	5,450	11,550	0.2	94.0	0.7	3.7	0.7	0.7
131	A36	Ballymena - Larne, at Moorfield	2,870	2,820	5,690	0.5	85.1	1.9	8.6	3.3	0.6

<b>Table 4A – 7 day Annual Average Directional Flows and Percentage Composition of Traffic</b>											
<b>C P No.</b>	<b>ROUTE No.</b>	<b>LOCATION</b>	<b>24HR 7 DAY flow</b>								
			<b>Directional and Total</b>			<b>Percentage Traffic Composition</b>					
			<b>CH. 1</b>	<b>CH. 2</b>	<b>Total AADT</b>	<b>Motorbike</b>	<b>Car / Van</b>	<b>Car / Van + Trailer</b>	<b>HGV</b>		
									<b>Rigid HGV</b>	<b>Artic HGV</b>	<b>Bus / Coach</b>
135	A8	Larne - Ballynure, at Craiginorne	820	990	1,810	0.4	88.3	0.5	5.6	1.8	3.4
149	A6	Belfast Road, Mallusk	1,990	1,920	3,910	0.4	90.7	0.8	5.6	2.2	0.3
151	A6	Between Templepatrick Roundabout & Kilmakee Roundabout	8,220	8,520	16,740	0.3	91.4	0.5	4.2	2.6	1.0
159	B39	Seven Mile Straight, Ballyrobin	1,310	1,510	2,820	0.5	94.0	0.6	4.2	0.3	0.4
209	A2	Sydenham By-Pass, at George Best Belfast City Airport	31,120	27,500	58,620	0.3	94.4	0.2	3.7	0.9	0.5
221	A55	Upper Knockbreda Road, Belfast	15,660	17,730	33,390	0.3	96.1	0.2	2.4	0.3	0.7
234	B101	Pond Park Road, Lisburn	4,220	4,080	8,300	0.6	91.2	0.5	5.8	1.4	0.5
235	A3	Moira Road, Lisburn, West of Lissue Industrial Estate	5,960	6,060	12,020	0.4	91.5	0.6	5.3	1.7	0.5
306	A6	Dungiven - Londonderry, East of B74	8,020	8,060	16,080	0.1	89.0	0.8	6.1	3.0	1.0
308	A29	Coleraine - Limavady, at Fernlester	8,110	8,820	16,930	0.6	92.2	1.2	4.5	1.2	0.3
309	A29	Coleraine - Garvagh, South of B66	2,770	2,840	5,610	0.4	90.8	1.5	4.8	2.4	0.1
310	A26	Coleraine - Ballymoney, South East of Ring Road	8,300	8,650	16,950	0.5	93.7	0.6	3.5	1.2	0.5
311	A2	Coleraine - Portstewart, North of B185	4,100	3,950	8,050	0.7	96.2	0.4	1.8	0.1	0.8
315	B62	Ballymoney - Portrush, North of A26	4,200	3,980	8,180	0.5	93.4	0.9	3.5	1.1	0.6
318	A44	Ballycastle - Armoy, East of B67	3,190	3,200	6,390	0.4	93.6	1.0	3.9	0.5	0.6
321	A54	Coleraine - Kilrea, South of A29	3,400	3,570	6,970	0.4	97.4	0.1	2.0	0.1	0.0
325	A29	Coleraine Ring Road, between A29 - B185	3,640	3,350	6,990	1.0	94.4	0.9	3.3	0.2	0.2
331	B64	Dungiven - Garvagh, at Dungiven	1,910	1,870	3,780	0.2	91.1	1.3	5.6	1.2	0.6

**Table 4A – 7 day Annual Average Directional Flows and Percentage Composition of Traffic**

C P No.	ROUTE No.	LOCATION	24HR 7 DAY flow								
			Directional and Total			Percentage Traffic Composition					
			CH. 1	CH. 2	Total AADT	Motorbike	Car / Van	Car / Van + Trailer	HGV		
									Rigid HGV	Artic HGV	Bus / Coach
353	A515	Foyle Bridge, Londonderry	17,330	17,340	34,670	0.6	93.8	0.4	3.8	1.0	0.4
376	A2	A2 Ballykelly Road, Limavady	8,250	8,300	16,550	0.4	92.4	0.7	4.7	1.1	0.7
391	A5	Victoria Road, Londonderry, at Bolies	8,370	8,550	16,920	0.2	91.6	0.5	4.6	2.1	1.0
392	A2	Duke Street, Londonderry (To Limavady)	14,130	-	14,130	0.6	92.8	0.5	3.3	1.5	1.3
405	A1	Dublin Road, Newry	12,470	12,600	25,070	0.3	83.9	0.5	6.1	7.7	1.5
410	A1	Dromore – Banbridge, South of Old Banbridge Road	15,700	15,790	31,490	0.3	87.4	0.4	5.4	4.8	1.7
418	A28	Armagh - Newry, at Markethill	5,300	5,170	10,470	0.2	86.1	1.0	6.6	5.2	0.9
419	A1	Loughbrickland – Newry, South of Moneymore Road	13,630	13,710	27,340	0.3	86.0	0.3	5.6	5.9	1.9
442	A3	Monaghan Road, Middletown, Co Armagh	1,860	1,870	3,730	0.3	85.6	0.9	6.6	5.3	1.3
443	A2	Rostrevor Road, Warrenpoint, Co. Down	6,090	6,130	12,220	0.3	93.1	0.3	4.5	0.7	1.1
444	A20	Portaferry Road, Kircubbin, Co. Down	3,880	3,710	7,590	0.9	92.9	0.5	4.0	0.5	1.2
502	A2	Belfast - Bangor, at Cultra, East of Folk Museum	17,970	18,360	36,330	0.4	96.1	0.3	2.3	0.6	0.3
507	A21	Bangor Road, Newtownards	11,130	10,670	21,800	0.5	95.1	0.6	3.2	0.2	0.4
508	A48	Donagadee Road, Newtownards	5,620	4,920	10,540	0.5	94.7	0.3	3.5	0.2	0.8
510	A2	Donaghadee - Millisle, at Ballyvester	2,490	2,420	4,910	1.2	94.5	0.2	3.1	0.1	0.9
512	A22	Comber - Killyleagh, at Comber	4,870	4,790	9,660	0.5	93.5	0.8	4.0	0.6	0.6
513	A7	Belfast Road, Downpatrick, at Quoile	5,700	5,970	11,670	0.2	93.1	0.2	4.3	0.7	1.5
522	A1	Lisburn - Hillsborough (at Harry's Road)	21,210	21,490	42,700	0.3	90.6	0.3	4.0	3.6	1.2



<b>Table 4A – 7 day Annual Average Directional Flows and Percentage Composition of Traffic</b>											
<b>C P No.</b>	<b>ROUTE No.</b>	<b>LOCATION</b>	<b>24HR 7 DAY flow</b>								
			<b>Directional and Total</b>			<b>Percentage Traffic Composition</b>					
			<b>CH. 1</b>	<b>CH. 2</b>	<b>Total AADT</b>	<b>Motorbike</b>	<b>Car / Van</b>	<b>Car / Van + Trailer</b>	<b>HGV</b>		
									<b>Rigid HGV</b>	<b>Artic HGV</b>	<b>Bus / Coach</b>
532	C297	Ballynahinch Road, Lisburn	1,960	1,760	3,720	0.6	95.0	0.4	3.0	0.1	0.9
536	A1	A1 Newry, North of A27 Junction	10,980	11,220	22,200	0.3	85.6	0.5	5.6	6.5	1.5
610	A5	Omagh – Ballygawley, South of B122 (past junction of U1306)	6,860	7,010	13,870	-	-	-	-	-	-
612	A34	Lisnaskea - Maguiresbridge (Lisnagole Road near St Mary's Primary School)	4,450	4,460	8,910	0.2	88.3	1.0	5.7	4.0	0.8
615	A4	Enniskillen – Belcoo (East of Letterbreen near Moybrone/ Station Road Cross Roads)	1,970	1,970	3,940	0.3	91.3	1.7	4.0	2.1	0.6
617	A32	Enniskillen - Irvinestown (North of Cherrymount Roundabout)	8,350	8,480	16,830	0.2	92.7	0.7	4.0	1.8	0.6
629	A4	Enniskillen - Fivemiletown (West of B514 at Cultiagh)	6,150	6,090	12,240	0.2	91.1	0.8	4.6	2.3	1.0
632	B52	Garrison - Belleek (South of Farancassidy Cross Roads at Brollagh School)	1,030	1,030	2,060	0.3	93.4	2.0	3.8	0.4	0.1
645	A5	Omagh By-Pass, at footbridge	9,610	13,420	23,030	2.3	84.7	0.4	8.5	4.1	0.0
648	A5	Strabane By-Pass (Barnhill Road West of Derry Road)	7,600	7,000	14,600	0.2	90.8	1.0	4.9	2.9	0.2
660	A5	Omagh – Ballygawley, South of Crevenagh Road Roundabout	7,940	8,850	16,790	0.1	87.0	1.0	6.2	4.6	1.1
665	A32	Enniskillen Road, Irvinestown	3,560	3,600	7,160	0.3	95.6	1.3	2.2	0.2	0.4
670	A3	Clones Road Cavan side of B533	2,330	2,350	4,680	0.3	83.6	1.6	6.0	8.5	0.0
674	A47	Boa Island Road, Belleek	1,230	1,230	2,460	0.5	92.5	0.9	4.2	1.2	0.7
675	A5	A5 Tullyvar Road, Ballygawley	4,400	4,420	8,820	0.2	81.5	1.0	7.4	8.6	1.3
789	A52	Ballyutoag Road, Co. Antrim	2,540	2,300	4,840	0.4	91.5	0.3	6.0	1.4	0.4
793	A2	Shore Road South of Jordanstown Road	14,820	14,390	29,210	0.5	95.8	0.2	2.4	0.6	0.5
794	A1	Lisburn Road at Dunluce Avenue	8,630	8,270	16,900	1.1	95.0	0.1	2.1	0.2	1.5

<b>Table 4A – 7 day Annual Average Directional Flows and Percentage Composition of Traffic</b>											
<b>C P No.</b>	<b>ROUTE No.</b>	<b>LOCATION</b>	<b>24HR 7 DAY flow</b>								
			<b>Directional and Total</b>			<b>Percentage Traffic Composition</b>					
			<b>CH. 1</b>	<b>CH. 2</b>	<b>Total AADT</b>	<b>Motorbike</b>	<b>Car / Van</b>	<b>Car / Van + Trailer</b>	<b>HGV</b>		
									<b>Rigid HGV</b>	<b>Artic HGV</b>	<b>Bus / Coach</b>
797	A52	Crumlin Road, Belfast side Horseshoe bend	5,570	4,840	10,410	0.5	94.4	0.2	4.1	0.5	0.3
799	A52	Crumlin Road at Ingledene Park	9,950	9,630	19,580	0.6	94.9	0.2	3.0	0.3	1.0
800	A24	Ormeau Road at Knockbreda Park	13,280	13,070	26,350	1.2	94.4	0.3	2.2	0.6	1.3
907	A2	Belfast Road, Bangor Side of Ballyrobert Road Junction	14,590	-	14,590	0.4	95.3	0.3	2.9	0.7	0.4
908	A2	Belfast Road, Belfast Side of Ballyrobert Road Junction	16,930	-	16,930	1.2	94.7	0.5	2.7	0.6	0.3
910	A2	Bangor Road Cultra, Before Whinney Hill	18,490	-	18,490	0.5	95.4	0.3	2.7	0.7	0.4
918	A20	Upper Newtownards Road, Belfast at bus-stop opposite Summerhill Avenue (Outbound)	15,220	-	15,220	1.1	93.5	0.5	3.1	0.9	0.9
921	A20	Upper Newtownards Road, Belfast at Stormont entrance (Inbound)	16,190	-	16,190	1.1	93.4	0.4	3.0	0.8	1.3
922	A55	Knock Road, Castlereagh, at Shandon Park	16,830	17,460	34,290	0.3	97.0	0.3	2.1	0.2	0.1

**Table 4B – 7 day Annual Average Directional Flows and Percentage Composition of Traffic – DoENI 5 sites**

As previously stated, DfI Roads are moving towards classifying all vehicles using the EURO 6 Classification Scheme. As a result of the transition period there are still 15 sites that classified vehicles using DoENI 5 in 2017. The five classes used in the DoENI5 Classification Scheme are as follows:-

<b>Vehicle Class</b>	<b>Description</b>
Class 1	Car, Car & Trailer, Light Van
Class 2	Medium Goods Van or Minibus (<8.7m long)
Class 3	HGV Rigid (>8.7m long)
Class 4	Articulated Vehicle & Rigid HGV with trailer
Class 5	Bus & Coach

<b>Table 4B – 7 day Annual Average Directional Flows and Percentage Composition of Traffic</b>										
<b>C P No.</b>	<b>ROUTE No.</b>	<b>LOCATION</b>	<b>24HR 7 DAY flow</b>							
			<b>Directional and Total</b>			<b>Percentage Traffic Composition</b>				
			<b>CH. 1</b>	<b>CH. 2</b>	<b>Total AADT</b>	<b>Car / Van</b>	<b>Med Com</b>	<b>HGV</b>		
								<b>Rigid</b>	<b>Artic</b>	<b>Bus / Coach</b>
201	M1	Broadway (Junction 1) – Stockman's Lane (Junction 2)	45,190	46,420	91,610	92.4	2.4	1.2	3.2	0.8
202	M2	Fortwilliam Interchange Inbound (Junction 1)	49,970	-	49,970	94.0	2.2	1.0	1.9	0.9
203	M2	Fortwilliam Interchange Outbound (Junction 1)	51,900	-	51,900	94.2	2.1	1.0	1.8	0.9
204_1	M2	Greencastle (Junction 2) – Sandyknowes (Junction 4) (From Belfast)	35,330	-	35,330	90.3	3.2	1.6	4.0	0.9
204_2	M2	Greencastle (Junction 2) – Sandyknowes (Junction 4) (To Belfast)	34,890	-	34,890	90.2	3.1	1.6	4.1	1.0
205	M2	Sandyknowes (Junction 4) – Templepatrick (Junction 5)	24,570	24,040	48,610	91.6	2.5	1.3	3.6	1.0
206	M5	Greencastle (Junction 2) - Whiteabbey	16,640	16,090	32,730	96.2	1.7	0.6	0.7	0.8
207	A8	Sandyknowes (Junction 4) – Corr's Corner	7,690	7,840	15,530	90.0	3.0	1.6	4.4	1.0

<b>Table 4B – 7 day Annual Average Directional Flows and Percentage Composition of Traffic</b>										
<b>C P No.</b>	<b>ROUTE No.</b>	<b>LOCATION</b>	<b>24HR 7 DAY flow</b>							
			<b>Directional and Total</b>			<b>Percentage Traffic Composition</b>				
			<b>CH. 1</b>	<b>CH. 2</b>	<b>Total AADT</b>	<b>Car / Van</b>	<b>Med Com</b>	<b>HGV</b>		
								<b>Rigid</b>	<b>Artic</b>	<b>Bus / Coach</b>
213	A12	Westlink, Belfast, South of Roden Street	50,240	46,920	97,160	92.1	2.5	1.3	3.3	0.8
227	M1	Stockman's Lane Junction (above roundabout)	36,580	33,920	70,500	92.4	2.1	1.2	3.4	0.9
230	M1	Blacks Road on – slip (Junction 3)	20,750	-	20,750	96.0	1.8	0.8	0.6	0.8
231	M1	Blacks Road off – slip (Junction 3)	19,030	-	19,030	96.0	1.8	0.9	0.7	0.6
290	A12	Westlink, Clifton Street, towards M1	31,550	5,080	36,630	91.2	2.6	1.1	3.0	2.1
291	A12	Westlink, Clifton Street, towards M2	39,080	6,910	45,990	91.4	2.8	1.4	3.6	0.8
520	M1	Blacks Road (Junction 3) – Saintfield Road (Junction 6)	30,020	28,900	58,920	90.7	2.4	1.4	4.5	1.0

**Table 5 – 5 day Directional Flow Information**

Table 5 contains the weekday flows (5 day) for both directions of travel and a combined total, where appropriate. The peak hour flows are also given by direction, together with the start time of each peak hour.

The sites are listed in order of Census Point Number for ease of reference.

<b>Table 5 – 5 day Directional Flow Information</b>												
<b>C P No.</b>	<b>ROUTE No.</b>	<b>PEAK HOUR FLOW Weekday</b>										
		<b>24HR Weekday</b>			<b>CHANNEL 1</b>				<b>CHANNEL 2</b>			
		<b>CH. 1</b>	<b>CH. 2</b>	<b>TOTAL</b>	<b>AM</b>	<b>Start</b>	<b>PM</b>	<b>Start</b>	<b>AM</b>	<b>Start</b>	<b>PM</b>	<b>Start</b>
102	A6	11,200	10,800	22,000	680	08:00	1,150	17:00	920	06:00	730	17:00
109	A26	7,420	7,330	14,750	870	08:00	600	17:00	540	08:00	910	17:00
117	A2	3,790	3,810	7,600	310	08:00	260	14:00	250	11:00	360	17:00
119	A2	1,420	1,680	3,100	100	11:00	130	15:00	150	11:00	160	12:00
122	A6	8,220	8,320	16,540	710	06:00	580	17:00	510	08:00	910	17:00
123	A31	3,840	3,710	7,550	360	08:00	310	17:00	280	08:00	320	17:00
128	A31	6,420	5,640	12,060	390	11:00	520	16:00	460	08:00	400	18:00
131	A36	3,230	3,150	6,380	360	08:00	270	17:00	240	08:00	320	17:00
135	A8	880	1,070	1,950	60	08:00	90	17:00	100	08:00	80	17:00
149	A6	2,170	2,100	4,270	130	08:00	240	17:00	240	08:00	140	16:00
151	A6	8,840	9,230	18,070	650	08:00	770	17:00	690	08:00	790	16:00
159	B39	1,450	1,700	3,150	130	08:00	160	17:00	230	08:00	160	17:00
201	M1	48,900	49,900	98,800	2,880	11:00	4,080	15:00	4,100	07:00	3,110	13:00
202	M2	53,940	-	53,940	5,780	07:00	3,370	16:00	-	-	-	-
203	M2	56,470	-	56,470	3,140	08:00	5,990	16:00	-	-	-	-
204_1	M2	39,130	-	39,130	2,260	08:00	4,260	16:00	-	-	-	-
204_2	M2	38,050	-	38,050	4,310	07:00	2,390	17:00	-	-	-	-
205	M2	26,930	25,900	52,830	1,700	08:00	2,920	16:00	2,850	07:00	1,830	17:00
206	M5	18,200	17,640	35,840	1,030	08:00	2,030	17:00	2,130	07:00	1,100	16:00
207	A8	8,610	8,720	17,330	430	08:00	1,110	17:00	1,130	07:00	500	16:00
209	A2	33,890	29,660	63,550	2,820	07:00	2,700	16:00	1,840	08:00	2,660	17:00
213	A12	54,360	50,340	104,700	3,450	08:00	4,490	16:00	3,900	07:00	3,280	13:00
221	A55	17,060	19,470	36,530	1,290	08:00	1,430	16:00	1,660	08:00	1,660	17:00
227	M1	39,340	35,890	75,230	2,520	11:00	3,430	13:00	2,530	07:00	2,110	13:00
230	M1	22,130	-	22,130	2,050	08:00	1,390	13:00	-	-	-	-
231	M1	20,300	-	20,300	1,910	11:00	2,240	14:00	-	-	-	-
234	B101	4,660	4,530	9,190	390	08:00	520	17:00	450	08:00	410	16:00

<b>Table 5 – 5 day Directional Flow Information</b>												
<b>C P No.</b>	<b>ROUTE No.</b>	<b>PEAK HOUR FLOW Weekday</b>										
		<b>24HR Weekday</b>			<b>CHANNEL 1</b>				<b>CHANNEL 2</b>			
		<b>CH. 1</b>	<b>CH. 2</b>	<b>TOTAL</b>	<b>AM</b>	<b>Start</b>	<b>PM</b>	<b>Start</b>	<b>AM</b>	<b>Start</b>	<b>PM</b>	<b>Start</b>
235	A3	6,580	6,610	13,190	670	08:00	450	17:00	380	08:00	630	17:00
290	A12	34,070	5,180	39,250	2,570	07:00	2,320	14:00	330	11:00	340	13:00
291	A12	42,570	7,330	49,900	2,580	07:00	3,160	16:00	470	08:00	530	16:00
306	A6	8,510	8,470	16,980	600	08:00	820	17:00	590	08:00	680	17:00
308	A29	8,450	9,160	17,610	850	08:00	620	17:00	520	08:00	960	17:00
309	A29	2,830	2,880	5,710	300	08:00	220	17:00	170	08:00	320	17:00
310	A26	8,830	9,120	17,950	770	08:00	720	17:00	630	08:00	860	17:00
311	A2	4,060	3,840	7,900	260	11:00	390	17:00	280	08:00	310	15:00
315	B62	4,240	3,930	8,170	300	08:00	400	17:00	310	08:00	360	16:00
318	A44	3,270	3,350	6,620	270	08:00	280	16:00	300	08:00	340	17:00
321	A54	3,570	3,710	7,280	380	08:00	260	14:00	210	11:00	390	17:00
325	A29	3,850	3,480	7,330	330	08:00	380	16:00	320	08:00	270	17:00
331	B64	2,040	2,000	4,040	140	08:00	210	17:00	140	08:00	220	17:00
353	A515	18,680	18,520	37,200	1,590	08:00	1,670	17:00	1,400	08:00	1,530	16:00
376	A2	8,810	8,870	17,680	770	08:00	810	17:00	770	08:00	780	17:00
391	A5	8,800	8,990	17,790	810	08:00	600	14:00	500	11:00	890	17:00
392	A2	15,130	-	15,130	900	08:00	1,370	17:00	-	-	-	-
405	A1	13,340	13,390	26,730	1,420	08:00	1,090	17:00	830	08:00	1,300	17:00
410	A1	16,850	17,020	33,870	1,500	07:00	1,230	17:00	1,220	08:00	1,770	17:00
418	A28	5,670	5,520	11,190	470	08:00	510	17:00	480	08:00	500	17:00
419	A1	14,570	14,590	29,160	1,420	08:00	1,250	17:00	980	08:00	1,340	17:00
442	A3	1,910	1,910	3,820	140	08:00	170	17:00	140	08:00	140	15:00
443	A2	6,220	6,300	12,520	640	08:00	420	17:00	350	11:00	710	17:00
444	A20	4,150	3,950	8,100	200	11:00	570	17:00	570	07:00	240	12:00
502	A2	19,290	18,650	37,940	2,360	07:00	1,140	16:00	990	11:00	2,320	17:00
507	A21	11,990	11,500	23,490	880	08:00	1,000	17:00	1,040	08:00	900	16:00
508	A48	5,970	5,220	11,190	500	07:00	430	14:00	290	11:00	570	17:00
510	A2	2,470	2,390	4,860	200	08:00	190	14:00	150	11:00	220	16:00
512	A22	5,200	5,120	10,320	300	11:00	600	16:00	560	08:00	350	17:00
513	A7	6,190	6,470	12,660	580	08:00	570	17:00	540	07:00	530	16:00
520	M1	32,520	30,860	63,380	1,850	11:00	3,080	16:00	2,690	07:00	1,770	12:00
522	A1	22,720	23,210	45,930	2,220	07:00	1,410	17:00	1,270	08:00	2,390	17:00
532	C297	2,190	1,960	4,150	400	08:00	140	14:00	100	08:00	290	17:00
536	A1	11,670	11,880	23,550	1,270	08:00	890	17:00	690	11:00	1,210	17:00
610	A5	7,390	7,380	14,770	650	08:00	710	17:00	500	07:00	630	17:00

<b>Table 5 – 5 day Directional Flow Information</b>												
<b>C P No.</b>	<b>ROUTE No.</b>	<b>PEAK HOUR FLOW Weekday</b>										
		<b>24HR Weekday</b>			<b>CHANNEL 1</b>				<b>CHANNEL 2</b>			
		<b>CH. 1</b>	<b>CH. 2</b>	<b>TOTAL</b>	<b>AM</b>	<b>Start</b>	<b>PM</b>	<b>Start</b>	<b>AM</b>	<b>Start</b>	<b>PM</b>	<b>Start</b>
612	A34	4,780	4,810	9,590	400	08:00	380	17:00	320	08:00	450	17:00
615	A4	2,020	2,030	4,050	200	08:00	150	16:00	120	11:00	230	17:00
617	A32	9,030	9,210	18,240	870	08:00	730	16:00	720	08:00	850	17:00
629	A4	6,470	6,330	12,800	700	08:00	440	12:00	370	11:00	670	17:00
632	B52	1,050	1,040	2,090	80	09:00	80	17:00	60	11:00	100	17:00
645	A5	10,300	14,100	24,400	700	08:00	820	17:00	970	08:00	1,050	17:00
648	A5	8,260	7,540	15,800	640	08:00	700	17:00	560	08:00	680	17:00
660	A5	8,430	9,390	17,820	680	08:00	670	17:00	610	07:00	840	17:00
665	A32	3,810	3,860	7,670	390	08:00	300	17:00	230	08:00	410	17:00
670	A3	2,360	2,380	4,740	150	08:00	240	17:00	210	08:00	190	17:00
674	A47	1,200	1,180	2,380	80	11:00	90	17:00	70	11:00	110	17:00
675	A5	4,610	4,570	9,180	290	08:00	390	17:00	310	08:00	370	17:00
789	A52	2,890	2,580	5,470	580	08:00	230	17:00	150	07:00	360	17:00
793	A2	16,050	15,480	31,530	1,530	07:00	1,110	16:00	980	08:00	1,370	17:00
794	A1	9,160	8,760	17,920	740	08:00	580	14:00	490	11:00	780	17:00
797	A52	6,180	5,270	11,450	880	08:00	510	17:00	310	08:00	590	17:00
799	A52	10,520	10,170	20,690	880	08:00	690	18:00	560	08:00	930	17:00
800	A24	13,730	13,460	27,190	1,000	07:00	920	13:00	830	11:00	980	16:00
907	A2	15,750	-	15,750	2,060	07:00	920	16:00	-	-	-	-
908	A2	18,230	-	18,230	2,360	07:00	1,060	16:00	-	-	-	-
910	A2	19,650	-	19,650	2,170	07:00	1,260	16:00	-	-	-	-
918	A20	16,000	-	16,000	920	08:00	1,270	17:00	-	-	-	-
921	A20	17,180	-	17,180	1,490	07:00	1,190	16:00	-	-	-	-
922	A55	18,170	18,940	37,110	1,400	08:00	1,530	16:00	1,470	08:00	1,520	17:00

## PART 2

# VARIATIONS IN TRAFFIC FLOW



## **General information relating to Part 2 – Variations in traffic flow**

2.1 Tables 6 and 7 provide information on changes in recorded traffic flows over recent years. Table 6 gives the Annual Average Daily Traffic (AADT) (7 day) figures from 2007 - 2017. Table 7 includes percentage changes in traffic volumes (7 day) between 2013 and 2017.

2.2 The following are points of clarification regarding Tables 6 and 7.

- (a) CP 123 – Moneymore Road, Magherafelt: drop in traffic flow due to the opening of the Magherafelt By-Pass in 2017.
- (b) CP 128 – Castledawson – Magherafelt (South West of Bowmans Road): drop in traffic flow due to the opening of the Magherafelt By-Pass in 2017.
- (c) CP 135 – Larne to Ballynure, at Craiginorne: drop in traffic flow due to the opening of the new section of A8 in 2015.
- (d) CP 204 – Greencastle (Junction 2) – Sandyknowes (Junction 4): from 2017 onwards this site has been split into 2 separate sites covering each of the 2 channels, (i.e. CP 204\_1 – From Belfast and CP 204\_2 – To Belfast). The historic data in Tables 6 and 7 have been amended accordingly.
- (e) CP 392 – Duke Street, Londonderry: from 2017 onwards this site only records data in one direction, (i.e. To Limavady). The historic data in Tables 6 and 7 have been amended accordingly.
- (f) All other cells within Tables 6 and 7 that are marked “-” means that either the data was considered unreliable or no information was available at that site.

2.3 The changes in traffic flows between 2016 and 2017 for the various classes of road are shown in Table 8.

**Table 6 - Annual Average Daily Traffic (7 day) from 2007 - 2017**

This table contains the Annual Average Daily Traffic flows (7 day) for each site for each year. The sites are listed in order of Census Point Number.

<b>Table 6 - 7 Day (AADT)</b>												
<b>C P No.</b>	<b>ROUTE No.</b>	<b>2007</b>	<b>2008</b>	<b>2009</b>	<b>2010</b>	<b>2011</b>	<b>2012</b>	<b>2013</b>	<b>2014</b>	<b>2015</b>	<b>2016</b>	<b>2017</b>
102	A6	19,010	18,770	19,240	19,130	-	-	-	18,660	19,310	19,960	20,270
109	A26	13,270	12,890	11,970	11,230	11,230	11,400	11,670	11,870	11,930	13,070	13,500
117	A2	7,240	6,940	6,930	6,730	-	7,200	7,050	7,260	7,300	7,020	7,320
119	A2	3,780	2,750	3,050	2,940	2,840	2,890	3,240	3,340	3,140	3,130	3,270
122	A6	13,600	13,630	13,860	13,500	13,250	12,850	13,100	13,400	14,040	14,780	15,340
123	A31	11,310	10,970	10,910	10,530	10,550	10,550	10,520	10,690	11,230	11,350	7,080
128	A31	16,110	15,460	15,350	16,220	17,910	15,320	-	14,690	15,520	15,420	11,550
131	A36	5,540	5,330	5,330	5,090	-	-	4,800	5,410	5,420	5,540	5,690
135	A8	14,470	13,990	13,600	13,600	13,430	12,880	12,980	12,280	1,780	1,820	1,810
149	A6	5,120	4,600	4,130	3,710	3,560	-	3,500	4,020	3,870	3,860	3,910
151	A6	-	17,300	16,240	15,330	-	-	14,990	14,950	15,260	16,070	16,740
159	B39	-	-	2,950	2,610	2,580	2,530	2,550	2,630	2,700	2,750	2,820
201	M1	43,590	-	74,250	78,630	79,430	81,240	82,740	85,800	88,990	90,590	91,610
202	M2	45,000	45,050	48,460	48,630	48,930	48,750	47,390	46,440	49,650	49,980	49,970
203	M2	50,430	48,270	48,950	48,330	47,810	47,720	48,640	49,530	50,870	51,970	51,900
204_1	M2	-	-	31,870	31,880	31,690	31,820	32,080	32,730	34,050	34,980	35,330
204_2	M2	-	-	32,140	32,020	32,020	32,030	32,250	32,730	33,340	34,480	34,890
205	M2	42,320	40,890	43,630	42,790	42,610	42,700	42,960	43,790	46,390	48,010	48,610
206	M5	32,650	-	32,500	32,360	32,010	31,760	31,480	31,860	32,370	33,090	32,730
207	A8	13,040	12,050	14,970	15,210	14,990	14,510	14,540	14,770	15,640	15,300	15,530
209	A2	55,730	56,960	58,270	57,040	-	-	56,210	58,050	60,170	59,900	58,620
213	A12	-	-	80,980	83,780	85,600	87,860	89,960	92,220	95,810	97,120	97,160
221	A55	39,210	39,150	37,020	36,010	-	-	35,050	34,310	34,050	34,010	33,390
227	M1	-	-	61,260	61,610	61,390	62,690	62,660	65,000	67,620	69,250	70,500
230	M1	12,620	12,490	17,670	18,170	18,520	19,000	19,370	20,010	20,500	20,850	20,750
231	M1	19,430	19,650	16,440	16,660	16,960	17,260	17,540	18,200	18,600	18,670	19,030
234	B101	-	-	-	7,560	7,480	7,440	7,250	7,630	7,790	8,090	8,300
235	A3	-	-	-	11,700	11,480	11,300	-	12,080	11,860	11,600	12,020
290	A12	28,900	30,890	35,620	35,400	36,090	36,850	37,640	38,470	39,810	37,340	36,630
291	A12	35,350	35,880	38,070	40,090	41,050	41,890	42,440	43,570	44,790	45,620	45,990
306	A6	15,390	15,230	15,040	14,580	14,210	14,440	14,590	14,710	15,310	16,100	16,080
308	A29	16,680	14,830	16,070	15,800	15,490	16,740	16,330	15,900	16,420	17,100	16,930
309	A29	5,170	5,210	5,230	5,130	5,170	5,230	4,910	4,960	5,260	5,630	5,610
310	A26	17,500	16,440	15,940	16,120	16,000	-	16,380	16,260	16,300	16,150	16,950
311	A2	6,860	6,770	7,660	7,100	6,950	7,080	7,670	7,490	7,560	8,280	8,050
315	B62	6,630	7,440	7,500	7,690	7,240	7,840	7,040	7,560	7,480	8,310	8,180
318	A44	5,960	-	6,870	6,900	6,210	6,240	5,600	6,390	6,390	7,050	6,390
321	A54	5,850	6,200	6,420	6,210	6,090	6,380	-	5,990	6,290	6,320	6,970
325	A29	6,550	6,350	6,300	6,430	6,090	6,110	6,360	6,350	6,300	6,830	6,990

**Table 6 - 7 Day (AADT)**

C P No.	ROUTE No.	2007	2008	2009	2010	2011	2012	2013	2014	2015	2016	2017
331	B64	2,140	2,480	3,410	3,410	3,270	3,280	3,210	3,560	3,490	3,790	3,780
353	A515	31,520	31,520	31,380	31,160	30,800	31,970	31,670	30,090	-	-	34,670
376	A2	-	-	14,290	15,030	15,160	15,320	15,170	-	15,640	16,760	16,550
391	A5	17,390	16,010	16,860	17,460	-	-	16,410	15,510	16,700	17,240	16,920
392	A2	-	14,690	14,410	14,060	-	-	-	-	13,730	13,990	14,130
405	A1	-	-	-	18,120	17,360	18,840	20,260	20,210	21,960	23,440	25,070
410	A1	27,280	27,470	-	-	-	-	27,110	28,150	28,980	30,570	31,490
418	A28	10,080	9,760	9,600	9,440	9,460	9,420	9,710	9,750	10,180	10,090	10,470
419	A1	19,060	19,880	19,790	20,400	21,650	22,230	22,530	23,820	25,280	26,250	27,340
442	A3	5,010	4,580	4,340	4,230	-	-	4,170	3,530	3,770	3,830	3,730
443	A2	12,730	12,260	12,250	11,940	11,600	-	11,460	12,200	12,270	11,920	12,220
444	A20	7,230	6,990	7,030	6,870	-	6,940	-	7,280	7,180	7,310	7,590
502	A2	38,020	36,410	36,660	36,620	35,580	-	-	35,010	36,590	36,350	36,330
507	A21	-	19,890	20,050	20,220	20,070	-	20,340	20,620	20,980	21,630	21,800
508	A48	8,480	10,220	10,350	10,420	10,210	10,100	10,120	10,460	10,500	10,680	10,540
510	A2	5,170	4,970	4,700	4,700	4,580	4,260	4,030	4,240	4,620	4,420	4,910
512	A22	8,630	8,320	9,060	8,730	8,760	8,730	8,240	9,090	9,390	9,200	9,660
513	A7	12,190	12,030	12,000	11,710	11,210	11,410	11,840	11,620	11,630	11,860	11,670
520	M1	54,100	-	51,850	51,770	51,710	52,530	52,320	53,190	54,920	56,210	58,920
522	A1	39,510	39,410	40,190	39,230	39,200	40,980	-	39,780	41,820	40,100	42,700
532	C297	3,620	3,550	-	3,360	3,240	3,080	3,180	3,440	3,530	3,630	3,720
536	A1	-	-	-	-	-	-	-	17,940	19,040	18,610	22,200
610	A5	12,290	11,850	12,010	11,620	11,880	11,870	12,150	12,770	12,840	12,440	13,870
612	A34	8,570	8,350	8,770	8,610	8,430	8,530	8,420	8,630	8,670	8,220	8,910
615	A4	4,240	4,370	4,660	4,260	4,110	3,920	3,880	4,000	3,730	3,840	3,940
617	A32	13,930	13,710	13,860	14,130	13,850	14,770	15,650	16,370	16,240	15,680	16,830
629	A4	11,600	11,690	12,030	11,660	11,630	-	-	11,460	11,550	11,280	12,240
632	B52	2,080	1,980	1,970	1,900	1,960	1,910	1,770	1,930	1,910	1,810	2,060
645	A5	21,270	20,970	20,700	20,440	21,210	21,170	21,130	21,640	22,650	21,990	23,030
648	A5	14,040	14,020	14,220	14,300	14,260	14,270	15,250	14,510	14,530	14,890	14,600
660	A5	15,140	14,760	15,100	14,860	15,310	15,450	15,060	15,490	15,900	15,500	16,790
665	A32	7,060	6,690	6,920	6,610	6,530	6,340	6,580	6,770	6,810	6,990	7,160
670	A3	-	4,980	4,890	4,570	4,310	4,510	4,500	4,450	4,400	4,310	4,680
674	A47	-	-	-	2,470	2,310	2,290	2,270	2,350	2,440	1,940	2,460
675	A5	-	-	-	6,980	7,330	7,100	7,670	7,820	8,170	8,120	8,820
789	A52	5,150	4,700	4,100	3,780	3,690	3,840	3,750	4,400	4,410	4,320	4,840
793	A2	-	29,100	28,550	28,670	-	-	-	26,790	26,320	27,380	29,210
794	A1	-	20,870	19,960	18,400	-	-	14,020	16,910	17,670	17,470	16,900
797	A52	-	-	9,850	8,830	8,770	9,030	8,360	9,690	9,780	10,820	10,410
799	A52	-	-	17,260	19,470	-	19,440	19,240	19,460	19,300	18,730	19,580
800	A24	-	-	-	-	-	-	25,200	26,360	27,380	26,400	26,350
907	A2	-	-	14,430	14,500	14,240	13,990	13,800	13,960	14,510	14,760	14,590
908	A2	-	-	16,880	16,580	16,430	16,070	16,070	15,980	16,640	16,990	16,930
910	A2	-	-	17,550	18,630	17,620	17,110	17,290	17,570	18,250	18,450	18,490
918	A20	-	-	-	16,030	15,850	15,750	15,990	15,210	15,710	15,840	15,220

**Table 6 - 7 Day (AADT)**

<b>C P No.</b>	<b>ROUTE No.</b>	<b>2007</b>	<b>2008</b>	<b>2009</b>	<b>2010</b>	<b>2011</b>	<b>2012</b>	<b>2013</b>	<b>2014</b>	<b>2015</b>	<b>2016</b>	<b>2017</b>
921	A20	-	-	-	16,770	16,360	16,340	16,620	16,160	16,610	16,850	16,190
922	A55	-	-	-	34,360	34,590	34,240	35,030	33,800	34,760	34,460	34,290

**Table 7 – Yearly variations in AADT (7 day) from 2013 - 2017**

This table contains the Annual Average Daily Traffic flows (7 day) for each site for each year. The variation between each year for each site is given as a percentage of the previous year's value.

The sites are listed in order of Census Point Number for ease of reference.

<b>Table 7 – Yearly variations in AADT (7 day) from 2013 - 2017</b>											
C P No.	ROUTE No.	Location	ANNUAL AVERAGE DAILY TRAFFIC (AADT)								
			2013	% + or -	2014	% + or -	2015	% + or -	2016	% + or -	2017
102	A6	Toome - Randalstown, at Drumbeg	-	-	18,660	3.48	19,310	3.37	19,960	1.55	20,270
109	A26	Nutts Corner - Moira, at Nutts Corner	11,670	1.71	11,870	0.51	11,930	9.56	13,070	3.29	13,500
117	A2	Whitehead - Carrickfergus	7,050	2.98	7,260	0.55	7,300	-3.84	7,020	4.27	7,320
119	A2	Larne - Ballygalley, at Blackcave Tunnel	3,240	3.09	3,340	-5.99	3,140	-0.32	3,130	4.47	3,270
122	A6	Castledawson - Dungiven (North West of A31 near Roundabout)	13,100	2.29	13,400	4.78	14,040	5.27	14,780	3.79	15,340
123	A31	Moneymore Road, Magherafelt	10,520	1.62	10,690	5.05	11,230	1.07	11,350	-37.62	7,080
128	A31	Castledawson - Magherafelt (South West of Bowmans Road)	-	-	14,690	5.65	15,520	-0.64	15,420	-25.10	11,550
131	A36	Ballymena - Larne, at Moorfields	4,800	12.71	5,410	0.18	5,420	2.21	5,540	2.71	5,690
135	A8	Larne - Ballynure, at Craiginorne	12,980	-5.39	12,280	-85.50	1,780	2.25	1,820	-0.55	1,810
149	A6	Belfast Road, Mallusk	3,500	14.86	4,020	-3.73	3,870	-0.26	3,860	1.30	3,910
151	A6	Between Templepatrick Roundabout & Kilmakee Roundabout	14,990	-0.27	14,950	2.07	15,260	5.31	16,070	4.17	16,740
159	B39	Seven Mile Straight, Ballyrobin	2,550	3.14	2,630	2.66	2,700	1.85	2,750	2.55	2,820
201	M1	Broadway (Junction 1) - Stockman's Lane (Junction 2)	82,740	3.70	85,800	3.72	88,990	1.80	90,590	1.13	91,610
202	M2	Fortwilliam Interchange – Outbound (Junction 1)	47,390	-2.00	46,440	6.91	49,650	0.66	49,980	-0.02	49,970
203	M2	Fortwilliam Interchange – Inbound (Junction 1)	48,640	1.83	49,530	2.71	50,870	2.16	51,970	-0.13	51,900
204_1	M2	Greencastle (Junction 2) – Sandyknowes (Junction 4) (From Belfast)	32,080	2.03	32,730	4.03	34,050	2.73	34,980	1.00	35,330

**Table 7 – Yearly variations in AADT (7 day) from 2013 - 2017**

C P No.	ROUTE No.	Location	ANNUAL AVERAGE DAILY TRAFFIC (AADT)								
			2013	% + or -	2014	% + or -	2015	% + or -	2016	% + or -	2017
204_2	M2	Greencastle (Junction 2) – Sandyknowes (Junction 4) (To Belfast)	32,250	1.49	32,730	3.39	33,840	1.89	34,480	-	34,890
205	M2	Sandyknowes (Junction 4) – Templepatrick (Junction 5)	42,960	1.93	43,790	5.94	46,390	3.49	48,010	1.25	48,610
206	M5	Greencastle (Junction 2) - Whiteabbey	31,480	1.21	31,860	1.60	32,370	2.22	33,090	-1.09	32,730
207	A8(M)	Sandyknowes (Junction 4) – Corr's Corner	14,540	1.58	14,770	5.89	15,640	-2.17	15,300	1.50	15,530
209	A2	Sydenham By-Pass, at George Best Belfast City Airport	56,210	3.27	58,050	3.65	60,170	-0.45	59,900	-2.14	58,620
213	A12	Westlink, Belfast, South of Roden Street	89,960	2.51	92,220	3.89	95,810	1.37	97,120	0.04	97,160
221	A55	Upper Knockbreda Road, Belfast	35,050	-2.11	34,310	-0.76	34,050	-0.12	34,010	-1.82	33,390
227	M1	Stockman's Lane Junction (above roundabout)	62,660	3.73	65,000	4.03	67,620	2.41	69,250	1.81	70,500
230	M1	Blacks Road on – slip (Junction 3)	19,370	3.30	20,010	2.45	20,500	1.71	20,850	-0.48	20,750
231	M1	Blacks Road off – slip (Junction 3)	17,540	3.76	18,200	2.20	18,600	0.38	18,670	1.93	19,030
234	B101	Pond Park Road, Lisburn	7,250	5.24	7,630	2.10	7,790	3.85	8,090	2.60	8,300
235	A3	Moirra Road, Lisburn, West of Lissue Industrial Estate	-	-	12,080	-1.82	11,860	-2.19	11,600	3.62	12,020
290	A12	Westlink, Clifton Street, towards M1	37,640	2.21	38,470	3.48	39,810	-6.20	37,340	-1.90	36,630
291	A12	Westlink, Clifton Street, towards M2	42,440	2.66	43,570	2.80	44,790	1.85	45,620	0.81	45,990
306	A6	Dungiven - Londonderry, East of B74	14,590	0.82	14,710	4.08	15,310	5.16	16,100	-0.12	16,080
308	A29	Coleraine - Limavady, at Fernlester	16,330	-2.63	15,900	3.27	16,420	4.14	17,100	-0.99	16,930
309	A29	Coleraine - Garvagh, South of B66	4,910	1.02	4,960	6.05	5,260	7.03	5,630	-0.36	5,610
310	A26	Coleraine - Ballymoney, South East of Ring Road	16,380	-0.73	16,260	0.25	16,300	-0.92	16,150	4.95	16,950
311	A2	Coleraine - Portstewart, North of B185	7,670	-2.35	7,490	0.93	7,560	9.52	8,280	-2.78	8,050
315	B62	Ballymoney - Portrush, North of A26	7,040	7.39	7,560	-1.06	7,480	11.10	8,310	-1.56	8,180
318	A44	Ballycastle - Armoyle, East of B67	5,600	14.11	6,390	0.00	6,390	10.33	7,050	-9.36	6,390

**Table 7 – Yearly variations in AADT (7 day) from 2013 - 2017**

C P No.	ROUTE No.	Location	ANNUAL AVERAGE DAILY TRAFFIC (AADT)								
			2013	% + or -	2014	% + or -	2015	% + or -	2016	% + or -	2017
321	A54	Coleraine - Kilrea, South of A29	-	-	5,990	5.01	6,290	0.48	6,320	10.28	6,970
325	A29	Coleraine Ring Road, between A29 - B185	6,360	-0.16	6,350	-0.79	6,300	8.41	6,830	2.34	6,990
331	B64	Dungiven – Garvagh, at Dungiven	3,210	10.90	3,560	-1.97	3,490	8.60	3,790	-0.26	3,780
353	A515	Foyle Bridge, Londonderry	31,670	-4.99	30,090	-	-	-	-	-	34,670
376	A2	A2 Ballykelly Road, Limavady	15,170	-	-	-	15,640	7.16	16,760	-1.25	16,550
391	A5	Victoria Road, Londonderry, at Bolies	16,410	-5.48	15,510	7.67	16,700	3.23	17,240	-1.86	16,920
392	A2	Duke Street, Londonderry	-	-	-	-	13,730	1.89	13,990	1.00	14,130
405	A1	Dublin Road, Newry	20,260	-0.25	20,210	8.66	21,960	6.74	23,440	1.33	25,070
410	A1	Dromore – Banbridge, South of Old Banbridge Road	27,110	3.84	28,150	2.95	28,980	5.49	30,570	3.01	31,490
418	A28	Armagh - Newry, at Markethill	9,710	0.41	9,750	4.41	10,180	-0.88	10,090	3.77	10,470
419	A1	Loughbrickland – Newry, South of Moneymore Road	22,530	5.73	23,820	6.13	25,280	3.84	26,250	4.15	27,340
442	A3	Monaghan Road, Middletown, Co Armagh	4,170	-15.35	3,530	6.80	3,770	1.59	3,830	-2.61	3,730
443	A2	Rostrevor Road, Warrenpoint, Co. Down	11,460	6.46	12,200	0.57	12,270	-2.85	11,920	2.52	12,220
444	A20	Portaferry Road, Kircubbin, Co. Down	-	-	7,280	-1.37	7,180	1.81	7,310	3.83	7,590
502	A2	Belfast - Bangor, at Cultra, East of Folk Museum	-	-	35,010	4.51	36,590	-0.66	36,350	-0.06	36,330
507	A21	Bangor Road, Newtownards	20,340	1.38	20,620	1.75	20,980	3.10	21,630	0.79	21,800
508	A48	Donagadee Road, Newtownards	10,120	3.36	10,460	0.38	10,500	1.71	10,680	-1.31	10,540
510	A2	Donaghadee - Millisle, at Ballyvester	4,030	5.21	4,240	8.96	4,620	-4.33	4,420	11.09	4,910
512	A22	Comber - Killyleagh, at Comber	8,240	10.32	9,090	3.30	9,390	-2.02	9,200	5.00	9,660
513	A7	Belfast Road, Downpatrick, at Quoile	11,840	-1.86	11,620	0.09	11,630	1.98	11,860	-1.60	11,670
520	M1	Blacks Road (Junction 3) - Saintfield Road (Junction 6)	52,320	1.66	53,190	3.25	54,920	2.35	56,210	4.82	58,920

**Table 7 – Yearly variations in AADT (7 day) from 2013 - 2017**

C P No.	ROUTE No.	Location	ANNUAL AVERAGE DAILY TRAFFIC (AADT)								
			2013	% + or -	2014	% + or -	2015	% + or -	2016	% + or -	2017
522	A1	Lisburn - Hillsborough (at Harry's Road)	-	-	39,780	5.13	41,820	-4.11	40,100	6.48	42,700
532	C297	Ballynahinch Road, Lisburn	3,180	8.18	3,440	2.62	3,530	2.83	3,630	2.48	3,720
536	A1	A1 Newry, North of A27 Junction	-		17,940	6.13	19,040	-2.26	18,610	19.29	22,200
610	A5	Omagh – Ballygawley, South of B122 (past junction of U1306)	12,150	5.10	12,770	0.55	12,840	-3.12	12,440	11.50	13,870
612	A34	Lisnaskea - Maguiresbridge (Lisnagole Road near St Mary's Primary School)	8,420	2.49	8,630	0.46	8,670	-5.19	8,220	8.39	8,910
615	A4	Enniskillen - Belcoo (East of Letterbreen near Moybrone/ Station Road Cross Roads)	3,880	3.09	4,000	-6.75	3,730	2.95	3,840	2.60	3,940
617	A32	Enniskillen – Irvinestown (North of Cherrymount Roundabout)	15,650	4.60	16,370	-0.79	16,240	-3.45	15,680	7.33	16,830
629	A4	Enniskillen - Fivemiletown (West of B514 at Cultigh)	-	-	11,460	0.79	11,550	-2.34	11,280	8.51	12,240
632	B52	Garrison - Belleek (South of Farancassidy Cross Roads at Brollagh School)	1,770	9.04	1,930	-1.04	1,910	-5.24	1,810	13.81	2,060
645	A5	Omagh By-Pass, at footbridge	21,130	2.41	21,640	4.67	22,650	-2.91	21,990	4.73	23,030
648	A5	Strabane By-Pass (Barnhill Road, West of Derry Road)	15,250	-4.85	14,510	0.14	14,530	2.48	14,890	-1.95	14,600
660	A5	Omagh – Ballygawley, South of Crevenagh Road Roundabout	15,060	2.86	15,490	2.65	15,900	-2.52	15,500	8.32	16,790
665	A32	Enniskillen Road, Irvinestown	6,580	2.89	6,770	0.59	6,810	2.64	6,990	2.43	7,160
670	A3	Clones Road, Cavan side of B533	4,500	-1.11	4,450	-1.12	4,400	-2.05	4,310	8.58	4,680
674	A47	Boa Island Road, Belleek	2,270	3.52	2,350	3.83	2,440	-20.49	1,940	26.80	2,460
675	A5	A5 Tullyvar Road, Ballygawley	7,670	1.96	7,820	4.48	8,170	-0.61	8,120	8.62	8,820
789	A52	Ballyutoag Road, Co. Antrim	3,750	17.33	4,400	0.23	4,410	-2.04	4,320	12.04	4,840
793	A2	Shore Road South of Jordanstown Road	-	-	26,790	-1.75	26,320	4.03	27,380	6.68	29,210
794	A1	Lisburn Road at Dunluce Avenue	15,230	11.03	16,910	4.49	17,670	-1.13	17,470	-3.26	16,900
797	A52	Crumlin Road, Belfast side of Horseshoe bend	8,360	15.91	9,690	0.93	9,780	10.63	10,820	-3.79	10,410



**Table 7 – Yearly variations in AADT (7 day) from 2013 - 2017**

C P No.	ROUTE No.	Location	ANNUAL AVERAGE DAILY TRAFFIC (AADT)								
			2013	% + or -	2014	% + or -	2015	% + or -	2016	% + or -	2017
799	A52	Crumlin Road at Ingledene Park	19,240	1.14	19,460	-0.82	19,300	-2.95	18,730	4.54	19,580
800	A24	Ormeau Road at Knockbreda Park	25,200	4.60	26,360	3.87	27,380	-3.58	26,400	-0.19	26,350
907	A2	Belfast Road, Bangor, Bangor side of Ballyrobert Road Junction	13,800	1.16	13,960	3.94	14,510	1.72	14,760	-1.15	14,590
908	A2	Belfast Road, Bangor, Belfast side of Ballyrobert Road Junction	16,070	-0.56	15,980	4.13	16,640	2.10	16,990	-0.35	16,930
910	A2	Bangor Road Cultra, before Whinney Hill	17,290	1.62	17,570	3.87	18,250	1.10	18,450	0.22	18,490
918	A20	Upper Newtownards Road, Belfast, at bus-stop opposite Summerhill Avenue (Outbound)	15,990	-4.88	15,210	3.29	15,710	0.83	15,840	-3.91	15,220
921	A20	Upper Newtownards Road, Belfast, at Stormont entrance (Inbound)	16,620	-2.77	16,160	2.78	16,610	1.44	16,850	-3.92	16,190
922	A55	Knock Road, Castlereagh, at Shandon Park	35,030	-3.51	33,800	2.84	34,760	-0.86	34,460	-0.49	34,290

**Table 8 - Variation In Traffic Flow (7 day) between 2016 and 2017**

The change in traffic flow (7 day) 2016 – 2017 has been calculated for all sites and listed by road classification as shown in the table below. Route A12 (Westlink) was included with the motorway sites as it connects two motorways. The following table shows the findings.

<b>Table 8</b>		
<b>Route type</b>	<b>Change 2016 – 2017</b>	<b>Number of sites</b>
Motorways (incl. A12 Westlink)	0.85%	15
A Class routes	-0.02%	64
B Class routes	1.58%	5
C Class and Unclassified routes	2.48%	1
<b>Overall Total</b>	<b>0.36%</b>	<b>85</b>

(Note: CP No. 353 did not have data available in 2016 so was excluded from Table 8).

## **APPENDIX A**

### **Location Details of Historic Counter Sites**

**Table 9 - Location Details of Historic Counter Sites (listed by Road Number)**

This table is included as a “location finder” for those counter sites which used to be operational but were decommissioned prior to 2017. The most recent data for these counter sites, which are listed below, can be found in the 2016 Traffic and Travel Information Report, (see link below).

<https://www.infrastructure-ni.gov.uk/publications/traffic-and-travel-information-incorporating-annual-traffic-census-and-variations>

The sites are listed by route number order, (i.e. the road classification number).

<b>Route</b>	<b>CP No</b>	<b>Divn.</b>	<b>Location</b>	<b>Channel 1</b>	<b>Channel 2</b>	<b>Easting</b>	<b>Northing</b>
A1	208	East	Lisburn Road, Belfast, at King's Hall	To Belfast	From Belfast	331477	370792
A1	411	South	Banbridge By-Pass, North of Old Manse Road	To Dromore	To Newry	314412	345867
A1	434	South	Newry – Dundalk, North of Border	To Newry	To Border	307448	319598
A1	437	South	Newry By-Pass (Stage 1)	To Border	To Belfast	308386	328707
A1	438	South	Newry By-Pass (Stage 2)	To Border	To Belfast	307509	328004
A1	439	South	Newry By-Pass (Stage 3)	To Belfast	To Border	307079	325875
A1	446	South	A1-N1 near border with Co Louth	Northbound	Southbound	307179	320195
A1	524	East	Belfast - Lisburn, at Derriaghy	To Belfast	From Belfast	328013	367446
A1	525	East	Belfast - Lisburn, at Lambeg	To Belfast	From Belfast	327589	366760
A1	530	East	Hillsborough By-Pass, North of Moira Road	To Lisburn	To Dromore	323856	359314
A2	118	East	Carrickfergus - Belfast	To Belfast	To Carrickfergus	339376	386417
A2	210	East	Shore Road, Belfast, at Shore Crescent	To Belfast	From Belfast	334144	378825
A2	301	North	Limavady - Londonderry, at Greysteel	To Londonderry	To Limavady	258305	421443
A2	302	North	Limavady - Londonderry, at Roe Bridge	To Limavady	To Ballykelly	266711	422932
A2	305	North	Limavady - Magilligan, South of B201	To Limavady	To Magilligan	268337	424369

Traffic and Travel Information 2017

Route	CP No	Divn.	Location	Channel 1	Channel 2	Easting	Northing
A2	312	North	Portrush – Portstewart, at Portrush	To Portrush	To Portstewart	284124	439585
A2	319	North	Cushendall - Cushendun, South of B92	To Cushendall	To Ballycastle	322713	430747
A2	327	North	Bushmills - Ballycastle, at Bushmills	To Bushmills	From Bushmills	294118	441241
A2	332	North	Limavady - Magilligan, North of B69	To Limavady	To Coleraine	269340	434142
A2	342	North	Dunluce Road, Portrush	To Portrush	From Portrush	288142	440137
A2	350	North	Craigavon Bridge, Londonderry (upper deck)	To City Centre	To Duke Street	243808	416030
A2	351	North	Craigavon Bridge (lower deck)	To Londonderry	From Londonderry	416204	243588
A2	354	North	Strand Road, Londonderry	To City Centre	To Foyle Bridge	243823	418546
A2	356	North	Queen's Quay, Londonderry	To City Centre	To Queen's Quay Roundabout	243489	417537
A2	368	North	Foyle Embankment, Between Foyleside and Bus Station	To Guildhall Roundabout	To Craigavon Bridge	243815	416567
A2	370	North	Culmore Road, Londonderry, at St.Peters Church	To City Centre	To Foyle Bridge	244496	419755
A2	371	North	Culmore Road, Londonderry, at Heathfield	To City Centre	To Culmore	244624	419887
A2	373	North	Limavady Road, Londonderry, at Gransha	To City Centre	To Limavady	246509	418492
A2	374	North	Limavady Road, Londonderry, at Caw Brae	To City Centre	To Caw Roundabout	245983	417907
A2	381	North	Buncrana Road, Londonderry, at Pennyburn	To City Centre	To Buncrana	243824	418701
A2	383	North	Buncrana Road, Londonderry, at Whitehouse	To City Centre	To Buncrana	241601	420426
A2	394	North	Limavady By-Pass, Limavady	To Coleraine	To Ballykelly	266699	423450
A2	421	South	Warrenpoint Road, Newry	To Newry	To Warrenpoint	309142	324923
A2	422	South	Newcastle - Annalong, at Bloody Bridge	To Newcastle	To Annalong	338889	327195
A2	501	East	Hollywood By-Pass, East of Belfast Road	To Belfast	To Bangor	338994	377865
A2	505	East	Belfast - Bangor, at Springhill	To Bangor	To Belfast	348081	380297
A2	506	East	Bangor Ring Road, at Clandeboye	From Belfast	To Belfast Road	349205	380429

Traffic and Travel Information 2017

Route	CP No	Divn.	Location	Channel 1	Channel 2	Easting	Northing
A2	516	South	Dundrum - Clough	To Clough	To Dundrum	340849	337000
A2	903	East	Belfast Road Bangor, at Coach Hill Bend	To Bangor	N/A	345787	380329
A2	905	East	Belfast Road Bangor, Before Springhill Junction	To Bangor	N/A	348488	380584
A2	906	East	Belfast Road Bangor, Bangor side of Springhill	To Belfast	To Bangor	349038	380933
A2	915	East	Bangor Road, West of Ballymoney Road at Devil's Elbow	To Belfast	N/A	344028	381052
A3	401	South	Northway, Portadown, South of Seagoe Road link	To Portadown	From Portadown	301917	355096
A3	402	South	Portadown - Armagh, at Stonebridge	To Armagh	To Portadown	294869	349658
A3	407	South	Lake Road, Craigavon, East of Central Way	To Lurgan	To Portadown	304954	356828
A3	409	South	Magherlin - Moira	To Magheralin	To Moira	313854	359557
A3	415	South	Armagh Road, Portadown	To Portadown	To Armagh	299334	351675
A3	424	South	Armagh - Middleton, at Milford	To Armagh	To Border	285593	343478
A4	416	South	Portadown - Dungannon, at The Birches	To Portadown	To M1	295115	359769
A4	607	West	Ballygawley Road, West of Woodlough Road	To M1	To Ballygawley	273142	360492
A4	646	West	Enniskillen Throughpass (Wellington Road, West of Enniskillen Bridge)	To Ballygawley	To Border	223774	343917
A4	650	West	Dungannon (Woodlough Road East of Old English Road)	To Omagh	To Belfast	279594	359559
A4	662	West	Crossowen Road, near Augher, Co. Fermanagh	To Augher	To Clougher	255475	352857
A4	669	West	Enniskillen Road, Fivemiletown at lay-by	To Enniskillen	To Fivemiletown	243250	346958
A4	676	West	Annaghilla Road, between roundabout and U317	To Belfast	To Enniskillen	262579	356724
A4	677	West	New dual carriageway, Belfast bound, near lay-by west of Mullaghbane Road	To Belfast	To Enniskillen	273661	360000
A4	678	West	New dual carriageway, Belfast bound, at lay-by south west of Craveny Road	To Belfast	To Enniskillen	265408	357782
A5	390	North	Londonderry - Strabane, at New Buildings	To Strabane	To City Centre	240825	412268
A5	623	West	Sion Mills - Strabane, at Ballyfatten	To Sion Mills	To Strabane	233846	393990

Traffic and Travel Information 2017

Route	CP No	Divn.	Location	Channel 1	Channel 2	Easting	Northing
A5	626	West	Omagh - Newtownstewart, at Conneywarren	To Omagh	To Newtownstewart	243567	374251
A5	644	West	Omagh Throughpass (West of Dublin Road at Academy)	To Enniskillen	To Ballygawley	245389	372344
A5	649	West	Omagh By-Pass, at Gortrush	To Londonderry	To Belfast	244028	373147
A5	652	West	Aughnacloy - Monaghan (North of River Blackwater)	To Monaghan	To Aughnacloy	266566	350849
A5	653	West	Ballygawley - Omagh (North of Ballygawley Roundabout)	From Omagh	To Omagh	262666	357244
A5	657	West	Newtownstewart By-Pass (West of Plumbridge Road, opposite lay-by)	To Omagh	To Strabane	240060	386303
A5	659	West	Strabane By-pass Stage 2	To Londonderry	From Londonderry	233647	397562
A5	663	West	Victoria Road, Strabane, Co. Tyrone	To Londonderry	To Strabane	237156	403240
A6	103	North	Randalstown Road, Antrim	To Antrim	To Randalstown	313595	387407
A6	106	North	Belfast Road, Antrim	To Antrim	To Templepatrick	317102	385429
A6	125	West	Castledawson - Dungiven, at Ranaghan	To Castledawson	To Dungiven	282500	400596
A6	133	West	Castledawson By - Pass, at Bridge over Moyola	To Londonderry	To Belfast	293792	392310
A6	150	West	Toome By - Pass, West of Bann Bridge	To Londonderry	From Castledawson	298437	391250
A6	157	North	Belmont Road, Muckamore	To Dublin Road	To Belfast Road	315909	385774
A6	211	East	Antrim Road, Belfast, at Zoo	To Belfast	From Belfast	333233	380501
A6	360	North	Dungiven Road, Londonderry, at Drumahoe East	To City Centre	To Dungiven	247746	413511
A6	362	North	Dungiven Road, Londonderry, at Altnagelvin Roundabout	To City Centre	To Drumahoe	245073	415727
A6	363	North	Dungiven Road, Londonderry, at Rosstown Roundabout	To City Centre	To Dungiven	244593	416516
A6	366	North	Claudy, Dungiven side of A6/B74 junction	To Londonderry	To Dungiven	256509	409178
A6	798	East	Antrim Road at Cavehill Road Junction	To City Centre	To Antrim	333325	376369
A7	537	South	Saintfield Road, Crossgar	To Crossgar	To Saintfield	344671	353300
A8	120	North	Larne - Ballynure, at Drumnahoe	To Larne	To Belfast	337247	400825

Traffic and Travel Information 2017

Route	CP No	Divn.	Location	Channel 1	Channel 2	Easting	Northing
A8	212	East	North of Corr's Corner, on dual carriageway	To Belfast	From Belfast	330959	385127
A8	233	East	Belfast Road, North of Coleman's Corner	To Belfast	From Belfast	331288	390001
A12	345	East	Westlink at Divis Street (To M2)	To M2	On Slip	333214	374401
A12	346	East	Westlink at Divis Street (To M1)	To M1	Off Slip	333226	374401
A20	216	East	Upper Newtownards Road, Belfast, at Quarry Inn	To Belfast	From Belfast	343728	374032
A20	509	South	Portaferry Road, Newtownards	To Newtownards	To Portaferry	350096	373072
A20	796	East	Upper Newtownards Road	To City Centre	To Dundonald	337035	374047
A21	511	South	Newtownards Road, Comber	To Newtownards	To Comber	347594	369952
A22	217	East	Comber Road, Belfast, South East of New Line	To Belfast	To Comber	342520	372789
A23	218	East	Ballygowan Road, Belfast, at Roselawn	To Belfast	To Ballygowan	338808	370247
A23	792	East	Castlereagh Road South West of Orby Street	To Belfast City Centre	From Belfast	337201	372315
A24	515	South	Clough - Ballynahinch, at Castlenavan	To Ballynahinch	To Clough	340385	345934
A24	531	South	Belfast Road, Ballynahinch	To Belfast	From Belfast	336852	354542
A24	787	East	Belfast, Saintfield Road (near Knockbracken Road at KFC)	To Belfast	To Carryduff	336247	367000
A24	924	East	Ormeau Road at University Avenue	To Belfast City Centre	From Belfast	334342	372739
A25	423	South	Newry - Camlough, West of Camlough Road Roundabout at Egyptian Arch	To Newry	To Camlough	306976	327525
A25	441	South	Rathfriland Road, Co. Down	To Newry	To Rathfriland	312268	331560
A25	514	South	Downpatrick - Clough, at Tullymurry	To Downpatrick	To Clough	348323	344155
A25	518	South	Rathfriland Road, Castlewella	To Castlewella	To Rathfriland	331932	334955
A25	519	South	Castlewella - Clough, at Magherasaul	To Clough	To Castlewella	337472	338100
A26	104	North	Antrim - Ballymena, North of Dunsilly	To Ballymena	To Antrim	313671	390272
A26	105	North	Ballymena Road, Antrim	To Antrim	To Ballymena	313675	389702



Traffic and Travel Information 2017

Route	CP No	Divn.	Location	Channel 1	Channel 2	Easting	Northing
A26	108	North	International Airport - Nutts Corner (North of A52 Nutts Corner Roundabout)	To International Airport	To Nutts Corner	318960	378770
A26	113	North	Ballymena - Ballymoney, North of M2	To Ballymena	To Ballymoney	308213	407721
A26	130	North	Ballymena - Larne, at Ballykeel	To Ballymena	To Larne	312126	401913
A26	153	North	Old Stone Road, Muckamore	To Killead	To Antrim	317153	382531
A26	316	North	Ballymoney By-Pass, East of Ballybogy Road	To Belfast	To Coleraine	294448	427008
A26	317	North	Ballymoney - Ballymena, South East of Ballymoney	To Belfast	To Ballymoney	298043	424665
A26	412	South	Banbridge - Lurgan, North of Broken Bridge	To Banbridge	To Lurgan	311329	349478
A26	791	South	Moira Road, near Moira, Co. Down	Southbound	Northbound	316082	365308
A27	414	South	Tandragee - Portadown, South of B78	To Tandragee	To Portadown	300983	349600
A27	420	South	Armagh Road, Newry	To Newry	To Armagh	307838	327983
A28	655	West	Aughnacloy – Caledon (West of Glencrew Road)	To Caledon	To Aughnacloy	267648	351607
A29	124	West	Maghera Road, Tobermore	To Tobermore	To Maghera	283743	397619
A29	126	West	Maghera - Swatragh (at Grillagh Picnic Area, North of B75)	To Swatragh	To Maghera	285893	403416
A29	313	North	Portrush - Ballysally Roundabout	To Portrush	To Coleraine	285247	435562
A29	320	North	Coleraine Ring Road, at Sandelford Bridge	To Limavady	To Portrush	285153	431499
A29	322	North	Coleraine Ring Road, between A26 - B67	To Limavady	To Portrush	286476	432478
A29	323	North	Coleraine Ring Road, between B67 - B17	To Limavady	To Portrush	286582	432856
A29	324	North	Coleraine Ring Road, between B17 - A29	To Limavady	To Portrush	286082	434049
A29	417	South	Armagh - Keady	To Armagh	To Keady	287037	342221
A29	440	South	Armagh Road, Armagh, Co. Armagh	To Moy	To Armagh	286354	348455
A29	603	West	Dungannon to Cookstown (at graveyard North of Drumglass High School)	To Dungannon	To Cookstown	279727	363647
A29	606	West	Dungannon to Moy (South of Stangmore Roundabout)	To M1	To Moy	282031	359889

Traffic and Travel Information 2017

Route	CP No	Divn.	Location	Channel 1	Channel 2	Easting	Northing
A29	630	West	Dungannon Road, Cookstown	To Dungannon	To Cookstown	281207	376088
A29	656	West	Moneymore - Cookstown (South of Moneymore at lay-by)	To Cookstown	To Moneymore	285257	382889
A29	668	West	Desertmartin Road, Near Moneymore, Co. Londonderry	To Moneymore	To Desertmartin	285745	386713
A30	790	East	Glenavy Road, Co. Antrim	To Lisburn	To Glenavy	320424	368915
A32	614	West	Enniskillen - Swanlinbar Road (South of A4 junction)	To Enniskillen	To Border	220658	341218
A32	619	West	Omagh - Dromore, North East of B4	To Omagh	To Dromore	238413	366520
A32	620	West	Irvinestown - Dromore (Irvinestown at Top Filling Station)	To IrvinesTown	To Dromore	224524	358602
A32	666	West	Clanabogan Road, Omagh	To Omagh	To Dromore	224524	358602
A34	613	West	Lisnaskea - Newtownbutler (North West of B36)	To Lisnaskea	To Newtownbutler	238687	330266
A35	621	West	Kesh - Pettigoe, at Letterkeen	To Kesh	From Kesh	217932	363961
A35	672	West	Pettigo Road, Kesh	To Kesh	To Pettigo	214040	366517
A36	156	North	Moorfields Road, Ballymena	To Ballymena	To Larne	314191	401214
A37	304	North	Limavady - Coleraine, West of B66	To Limavady	To Coleraine	268380	423330
A37	307	North	Coleraine - Limavady, at Dunderg	To Coleraine	To Limavady	283371	429646
A38	624	West	Strabane - Lifford (at Bridge)	To Strabane	To Border	233547	398256
A40	359	North	Letterkenny Road, Londonderry East of Braehead Road	To City Centre	To Letterkenny	241819	415490
A42	112	North	Galgorm Road, Ballymena	To Ballymena	To Galgorm	309271	402487
A42	115	North	Ballymena - Broughshane, at Eaton Park	To Ballymena	To Broughshane	312684	404738
A42	163	North	Parkway, Ballymena	To Thomas Street	To Ballymoney Road	310915	403868
A42	667	West	Carricknakielt Road, Maghera	To Gulladuff	To Maghera	286563	400029
A42	673	West	Moyagall at Claddy angling club	To Maghera	To Claddy	294806	403026
A43	114	North	Cushendall Road, Ballymena	To Ballymena	To Cushendall	311347	405432
A43	395	North	Glenravel Road, Co. Antrim	To Ballymena	To Cargin	315810	416863

Traffic and Travel Information 2017

Route	CP No	Divn.	Location	Channel 1	Channel 2	Easting	Northing
A44	328	North	Ballymena - Ballycastle, North of A26	To Ballycastle	To Ballymena	304557	420087
A45	604	West	Dungannon - Coalisland (North of Lurgaboy Lane)	To Dungannon	To Coalisland	280191	363666
A45	605	West	Coalisland - M1, at Tamnamore	To Coalisland	To M1	287132	361921
A46	616	West	Enniskillen - Belleek (near entrance to Brookview Rise)	To Enniskillen	To Belleek	222881	344454
A46	661	West	Lower Lough Erne, Shore Road, Co. Fermanagh	To Enniskillen	To Belleek	221357	345674
A46	671	West	Shore Road, Belleek	To Belleek	To Enniskillen	195000	358284
A47	658	West	Kesh to Belleek (Kesh side of Boa Island)	To Belleek	To Kesh	214550	364640
A50	413	South	Banbridge - Gilford, at Lawrencetown	To Banbridge	To Gilford	310649	348994
A50	517	South	Castlewellan - Newcastle	To Newcastle	To Castlewellan	337139	333064
A54	127	West	Portglenone - Bellaghy (near Portglenone)	To Portglenone	To Bellaghy	297165	403635
A54	329	North	Kilrea - Coleraine, at Kilrea	To Kilrea	To Coleraine	292503	413276
A55	220	East	Shaws Bridge, Belfast	To Belfast	From Belfast	332258	369408
A55	222	East	Parkway, Belfast	To Belmont Road	To Hollywood Road	338583	374764
A55	795	East	Stockmans Lane North West of Boucher Road	Northbound	Southbound	331100	371178
A55	923	East	Belvoir Road at Newtownbreda High School	To Milltown Road	To Saintfield Road	33481	369527
A57	107	North	International Airport – Templepatrick (East of A26 Killead Roundabout)	To International Airport	To Templepatrick	317901	381960
A57	129	North	International Airport - Templepatrick, at Airport	To Templepatrick	To International Airport	317367	381581
A57	148	North	Ballyclare Road, Templepatrick	To Ballyclare	To Templepatrick	323536	385947
A57	154	North	Dublin Road, Antrim	To Antrim	To International Airport	314397	384314
A76	408	South	Lough Road, Lurgan South of M1	To Lurgan	To M1	306771	360148
A101	911	East	New Link Road at the rear of B&Q, Sprucefield	To Hillsborough Road	To M1	325241	361876
A501	788	East	Falls Road between Springfield and Broadway, Belfast	To Belfast City Centre	To Broadway	331574	373364
A505	601	West	Cookstown - Omagh, West of Creggan Cross	To Omagh	To Cookstown	262071	378678

Traffic and Travel Information 2017

Route	CP No	Divn.	Location	Channel 1	Channel 2	Easting	Northing
A505	628	West	Omagh - Cookstown (West of Knocknamoe near T.C Autos)	To Omagh	To Cookstown	246925	373318
A505	664	West	Drum Road, Cookstown	To Omagh	To Cookstown	277682	377467
A509	651	West	Derrylin - Belturbet (Aghalane Bridge near Killymackan Lough)	To Cavan	To Derrylin	233539	320519
A509	654	West	Enniskillen - Bellanaleck (South of A4 and Sillees River)	To Enniskillen	To Bellanaleck	223092	341178
A512	523	East	McKinstry Road, Dunmurry, South of Cutts	To Belfast	To Lisburn	327469	367712
A513	529	East	Wilmar Road, Dunmurry	To Belfast	To Lisburn	327247	367393
A514	377	North	Crescent Link, Londonderry, at Caw	To Caw Roundabout	To Altnagelvin Roundabout	245166	415909
A515	372	North	Madams Bank Road, Londonderry	To City Centre	To Foyle Bridge	244521	419912
B2	426	South	Moyraverty (Craigavon) - Ballynaghy	To Craigavon	From Craigavon	304050	354061
B3	428	South	Keady, Lake Road	To Keady	To Border	283616	333388
B18	121	North	Toome - Castledawson, at Toome Bridge	To Toome	To Castledawson	298831	390867
B18	164	North	Roguary Road, Toomebridge	To Toome	To Moneyglass	299531	391343
B23	527	East	Hillhall Road, Lisburn, near Ballyaghlis	To Belfast	To Lisburn	330049	364871
B46	643	West	Gortin - Greencastle (Crockanboy Road, South of Rousky)	To Gortin	To Greencastle	255611	384722
B49	625	West	Dunnamanagh - Claudy (At Donemana Primary School)	To Dunnamanagh	To Claudy	244738	403518
B50	627	West	Drumquin Road, Omagh	To Omagh	To Drumquin	242932	373910
B52	136	North	Junction with A42 - Junction with B18	To Randalstown	To Portlengone	300103	399453
B59	160	North	Ballymena Road, Doagh	To Ballymena	To Doagh	321310	393349
B62	333	North	Ballymoney Finvoy Road, South of Bann Road	To Ballymoney	To Rasharkin	295084	424147
B64	137	North	Junction with B64 - Junction with B93	To Cullybackey	To Rasharkin	301253	408995
B64	330	North	Garvagh Road, Kilrea, West of New Road	To Kilrea	To Garvagh	292172	412596
B66	314	North	Ballymoney - Limavady, Bann Road, East of B62	To Ballymoney	To Garvagh	294327	424433
B68	303	North	Limavady - Dungiven, South of Limavady	To Limavady	To Dungiven	268588	419900

Traffic and Travel Information 2017

Route	CP No	Divn.	Location	Channel 1	Channel 2	Easting	Northing
B72	622	West	Victoria Bridge - Castleberg (West of Urbalreagh Road)	To Castleberg	To A5	234777	390081
B82	618	West	Enniskillen - Kesh (North of A32 at Trory Parish Church)	To Enniskillen	To Kesh	223301	349307
B83	611	West	Omagh - Fintona (Seskinore Road, South of A5)	To Omagh	To Fintona	246801	369131
B95	101	North	Antrim - M2, at Greystone Road	To Antrim	To Rathbeg	317801	386871
B95	232	East	Ballyclare Hillhead Road, junction with A57 - junction with A8	To Ballyclare	From Ballyclare	329621	389986
B95	925	East	Hightown Road, Glengormley at Secondary School	To Glengormley	From Glengormley	331239	381873
B101	158	North	Dundrod Road, Nutts Corner	To Dundrod	To Nutts Corner	319797	377731
B102	223	East	Stewartstown Road, Belfast, at Kells Avenue	To Belfast	From Belfast	328783	370688
B103	224	East	Upper Malone Road, Belfast, at Lady Dixon Park	To Belfast	From Belfast	330617	367203
B103	528	East	Drumbeg Road, near Lisburn	To Belfast	To Lisburn	330689	366557
B108	633	West	Kinawley-Derrylin (at Stragowna Primary School)	To Kinawley	To Derrylin	223727	330488
B120	139	North	Larne, Old Glenarm Road, Cairncastle	To Larne	To Ballygalley	337739	406200
B127	634	West	Derrylin - Lisnaskea (North of Drumguiff Cross Roads at bungalow)	To Drumguiff	To Lisnaskea	235177	330506
B135	427	South	Junction with A29 - Cullyhanna	To Newtownhamilton	To Cullyhanna	292146	323676
B148	138	North	Junction with A2 - Junction with A8	To Carncastle	To Larne	336718	404953
B162	631	West	Cookstown - Lough Fea (near Ballynagilly Road U715)	To Cookstown	From Cookstown	278147	383649
B170	503	East	Ballysallagh Road, Bangor	To A2	To Craigantlet	347050	378963
B185	326	North	Coleraine - Portstewart, North of A29	To Coleraine	To Portstewart	283688	437401
B194	380	North	Racecourse Road, Londonderry, at New Street	To City Centre	To Shantallow	243512	419122
B506	236	East	Ravenhill Road, Belfast	To Belfast	From Belfast	335030	372321
B507	355	North	Branch Road, at Branch Road Roundabout	To City Centre	To Buncrana Road	242293	419671
B513	743	East	O'Neill Road Newtownabbey between Church Road and Antrim Road	To Antrim Road	To Church Road	332948	381799

Traffic and Travel Information 2017

Route	CP No	Divn.	Location	Channel 1	Channel 2	Easting	Northing
B518	155	North	Stiles Way, Antrim	To Ballymena Road	To Steeple Road	314560	388307
B518	165	North	Ballycraigy Road Muckamore, Antrim (at community centre)	To Belfast Road	To Ballycraigy Road	317172	386369
B520	602	West	Cookstown - Stewartstown Tullywigan Road (South of roundabout)	To Cookstown	To Stewartstown	281313	376093
B545	641	West	Tempo - Maguiresbridge (at Drumderg)	To Tempo	To Maguiresbridge	234999	345085
C47	161	North	Tullygarley Road, Ballymena	To Galgorm Road	To Toome Road	309122	401708
C368	504	East	Rathgael Road, Bangor	To Rathgael	To A2	348270	380052
C704	237	East	Cregagh Road, Belfast	To Belfast	From Belfast	335979	372317
C/UC	140	North	Ahoghill, Straid Road	To Ahoghill	To Randalstown	305792	401247
C/UC	141	West	Maghera Craigadick Road (U5053 near A6)	To Maghera	From Maghera	284772	399869
C/UC	142	North	Ballygalley Castle Hotel	To Ballygalley	To Cairncastle	337218	407733
C/UC	143	North	Broughshane, Caherty Road	To Broughshane	To Crebilly	315252	405662
C/UC	144	West	Draperstown, Bancran Road (near junction with B162)	To Draperstown	From Draperstown	275606	395360
C/UC	145	North	Ballygalley (at Old Mill)	To Larne	To Ballygalley	339287	405015
C/UC	146	West	Draperstown Mulhavoo Road (U5254 near junction with B41)	To Draperstown	To Moneyneany	278687	395567
C/UC	147	East	Pollindoo (North West of Carrickfergus)	To Carrick	From Carrick	339997	393524
C/UC	226	East	Governors Bridge, Belfast	To Saintfield Road	To Governors Bridge	333908	371628
C/UC	336	North	Garvagh, Mettican Road at No 82	To Garvagh	From Garvagh	283729	417809
C/UC	337	North	Ballycastle (between B15 and A2)	To B67	To B15	310189	440978
C/UC	338	North	Glenshane (off A6)	To Maghera	To Dungiven	272682	406657
C/UC	339	North	Ballymoney (B147 - B15)	To Kirkhills	From Kirkhills	298155	429464
C/UC	340	North	Gleanaan Road (West of Cushendall)	To Cushendun	To Loughguile	309128	429256
C/UC	341	North	Girona Ave, Portrush	To Hopefield Ave	To Ballywillan	286049	439585

Traffic and Travel Information 2017

Route	CP No	Divn.	Location	Channel 1	Channel 2	Easting	Northing
C/UC	357	North	Northland Road, Londonderry, at Fire Station	To City Centre	To Springtown	243251	417579
C/UC	369	East	Boucher Road, Belfast, near Balmoral Road	To Stockmans Lane	To Broadway	331441	371416
C/UC	399	North	Skeoge Link – Ballyarnet Roundabout	To Foyle Bridge	To Buncrana Road	243507	421130
C/UC	429	South	Newtownhamilton (cemetery)	To Newtown-hamilton	From Newtown-hamilton	291974	327428
C/UC	430	South	Monroe Avenue, Lurgan	To A3	From A3	309348	357980
C/UC	431	South	Granemore Road, East of Keady (off B31)	To Keady	From Keady	289960	335365
C/UC	433	South	Glassdrummond (off B3)	To Armagh	From Armagh	294162	339488
C/UC	533	South	Islandhill, Comber	To Car Park	To A21	348640	369108
C/UC	534	East	Springwell Road, Groomsport	To Groomsport	From Groomsport	354085	382477
C/UC	535	East	Front Road, Drumbo	To Drumbo	To Hillsborough Road	333280	363899
C/UC	635	West	Muckcross Road, Kesh near A35	To Kesh	From Kesh	217914	363980
C/UC	636	West	Tempo, Glen Road (North of Tempo off B80)	To Tempo	To Trillick	235651	348860
C/UC	637	West	Clady (U202 Tullmoan Road, South of Clady)	To Clady	From Clady	229874	393040
C/UC	638	West	West of Omagh, Tattysallagh Road (C665 B84 - A32)	To B84	From B84	234246	368418
C/UC	639	West	Castledearg, North West Drumquin (Meencargagh Road U133)	To Castledearg	To Drumquin	228720	378347
C/UC	640	West	Drumquin (Bradan Road C669 West of B84)	To Drumquin	To Pettigoe	231953	372834
C/UC	642	West	North West of Stewartstown (Annaghone Road, C619 off B160)	To Cookstown	To Stewartstown	284949	372099
M1	403	South	Lough Road (Junction 10) - Ballynacor (Junction 11)	To Lurgan	To Dungannon	304943	359724
M1	404	South	Stangmore (Junction 15) - Tamnamore (Junction 14)	To Dungannon	To Lurgan	284467	361524
M1	435	South	M1 Eastbound to M12 off - slip	One Way Traffic Flow	N/A	302352	358807
M1	445	South	Junction 9 to 10 near Knockadoney Bridge	To Belfast	To Portadown	311280	361742
M1	521	East	Sprucefield (Junction 7) – Moira (Junction 9)	To Lisburn	To Moira	322214	360664

Traffic and Travel Information 2017

<b>Route</b>	<b>CP No</b>	<b>Divn.</b>	<b>Location</b>	<b>Channel 1</b>	<b>Channel 2</b>	<b>Easting</b>	<b>Northing</b>
M2	110	North	Rathbeg (Junction 6) – Dunsilly (Junction 1 on M22)	To Belfast	To Toome	317903	388344
M2	116	North	Larne Road (Junction 10) - Broughshane Road (Junction 11)	To Ballymoney	To Antrim	312432	403251
M2	132	North	Rathbeg (Junction 6) – Templepatrick (Junction 5)	To Belfast	To Toome	320979	387345
M12	406	South	M12 North of Carn	To Portadown	To M1	302394	357981
M12	436	South	M12 to M1 Westbound on - slip	One Way Traffic Flow	N/A	302598	358423
M22	111	North	Dunsilly (Junction 1) - Ballygrooby (Junction 2)	To Belfast	To Toome	311807	389739



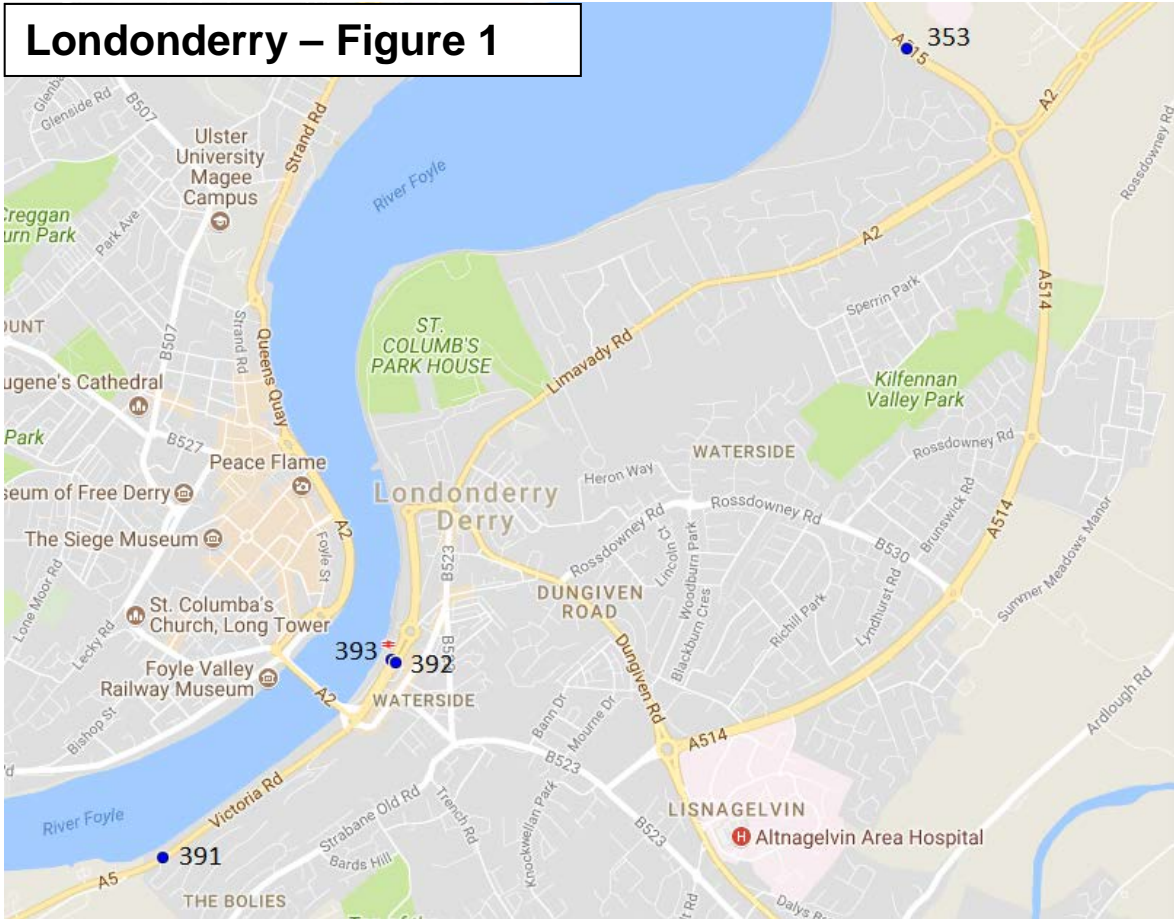
## **APPENDIX B**

### **Location of Current Census Points**

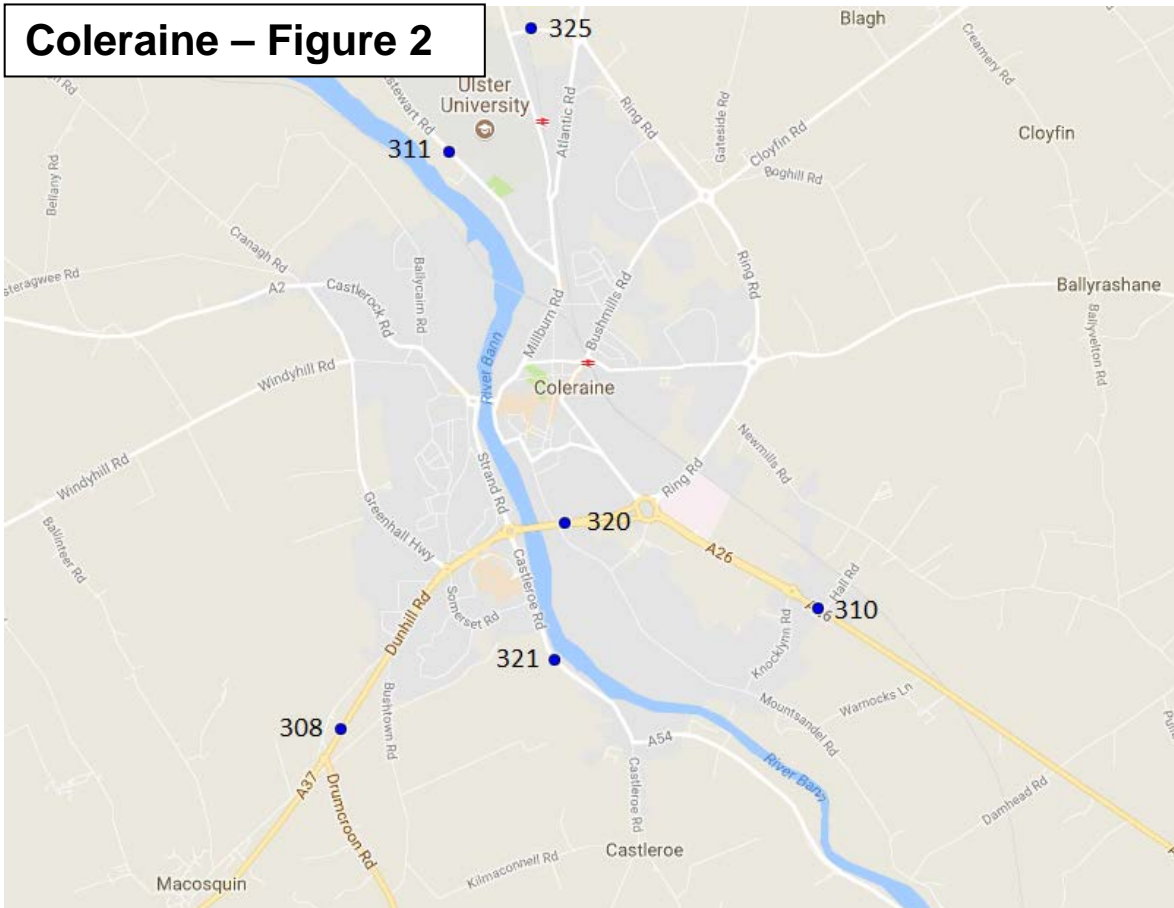
## **Appendix B Location of Current Census Points**

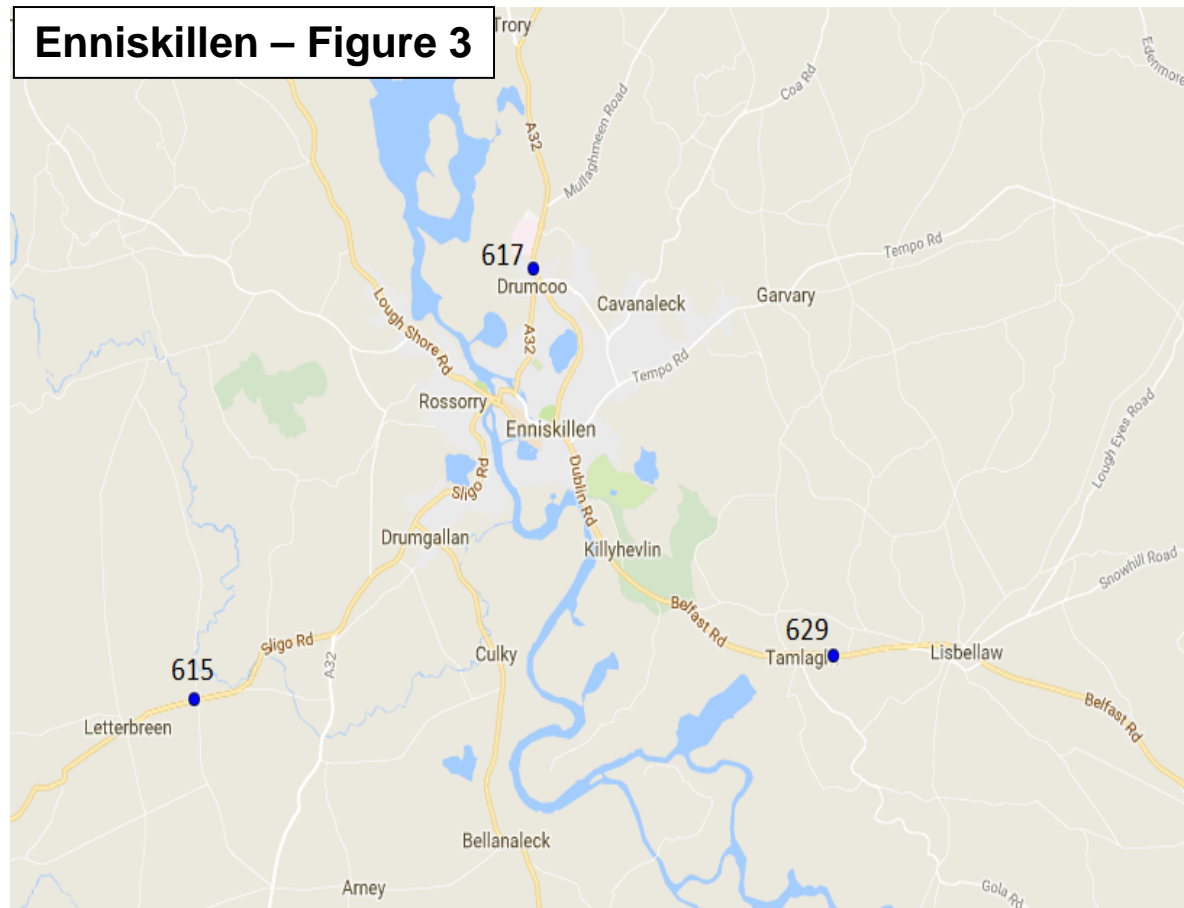
1. The maps contained in Appendix B show the locations of the Census Points from which the information in the report has been derived.
2. Figures 1 to 3 show Census Point locations in Londonderry, Coleraine and Enniskillen.
3. Figure 4 shows the location of Census Points and the 7-Day Annual Average Daily Flows throughout Northern Ireland.

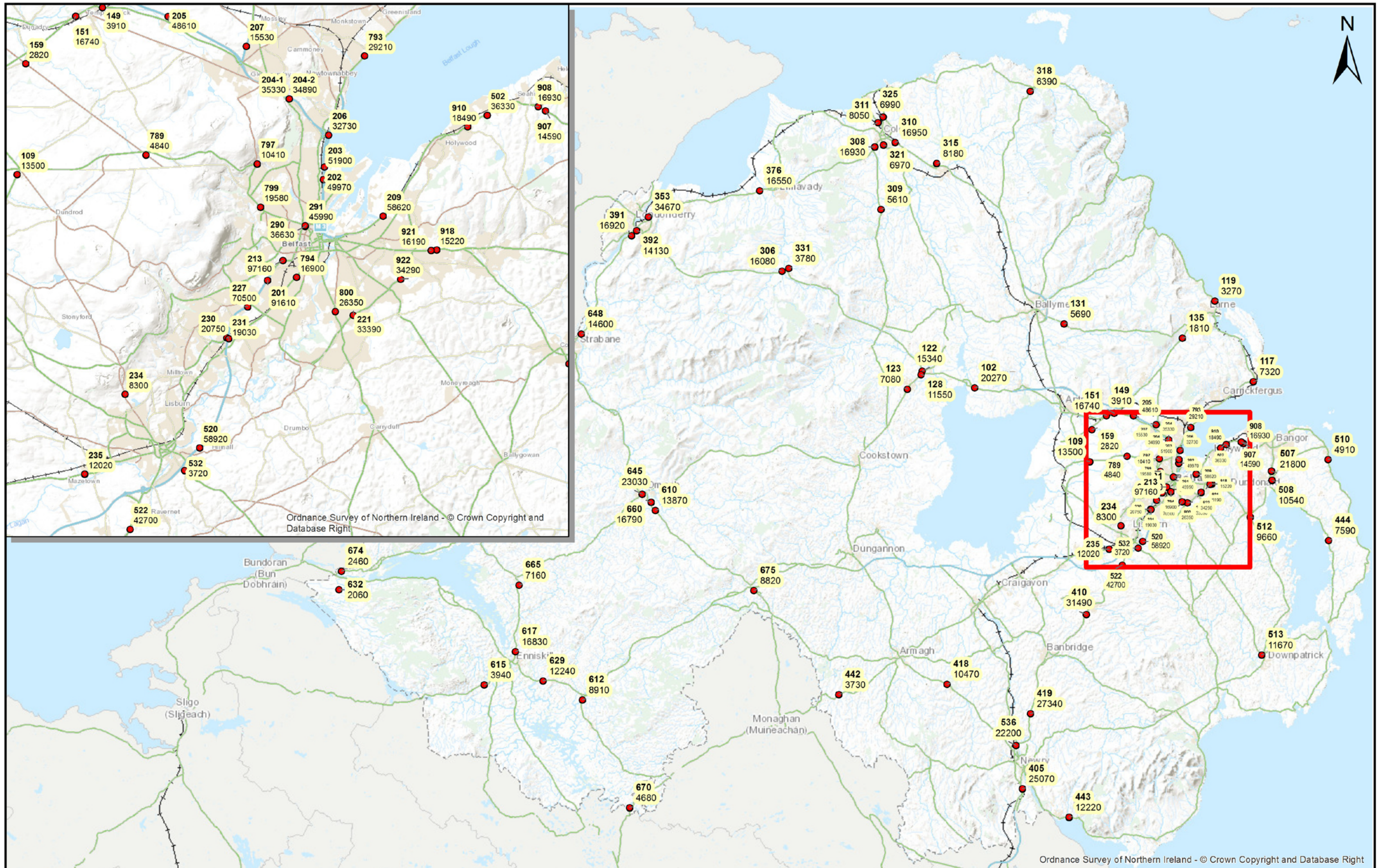
**Londonderry – Figure 1**



**Coleraine – Figure 2**

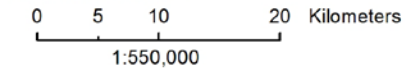






**Supporting Information**

DFI 2017 Traffic & Travel Information Report  
 OSNI Basemap  
 DFI Traffic Data 2017



1:550,000

The representation of scale should be used as a guide only.

**Key**

- 119** - Site number in bold
- 3270 - Site number in 7-day AADT

**Figure 4.**  
 DFI 2017 Traffic & Travel Information Report  
 Location of census points & Annual  
 Average daily traffic flows  
 for NI

Ref No. : dfiTrafficTravelReport17



Except as otherwise permitted under Copyright, Designs and Patents Act 1988 (as amended), this publication may only be reproduced, stored or transmitted in any form or by any means, with the prior permission of Land & Property Services.  
 © Crown Copyright and Database Right 2018

If you would like any further information or additional copies of this document, please contact:

Traffic Information and Control Centre  
1b Airport Road  
Belfast BT3 9DY

Telephone (028) 9025 4517  
Fax (028) 9025 4555  
E-mail address: [Belfast.ticc@infrastructure-ni.gov.uk](mailto:Belfast.ticc@infrastructure-ni.gov.uk)

If this document is not in a format that meets your needs, please contact Traffic Information and Control Centre as above to discuss your requirements.

**RSP 18/001**