



Department for
Infrastructure

An Roinn

Bonneagair

www.infrastructure-ni.gov.uk

EASTERN DIVISION

Report to
BELFAST CITY COUNCIL
Spring 2017



**INVESTORS
IN PEOPLE**

CONTENTS

PAGE

	FOREWORD BY DIVISIONAL ROADS MANAGER	iii
1.0	INTRODUCTION	1
2.0	NETWORK DEVELOPMENT / SRIT	13
	2.1 York Street Interchange Scheme	14
	2.2 M1 and M2 Bus Lanes	14
	2.3 Belfast Rapid Transit (BRT)	15
	2.4 Shaftsbury Link	16
	2.5 Minor Works	17
	2.6 Maintenance of Structures	18
3.0	NETWORK TRAFFIC AND STREET LIGHTING	21
	3.1 Collision Remedial Schemes	22
	3.2 Traffic Schemes	22
	3.3 Taxis	22
	3.4 Pedestrian Measures	23
	3.5 Safer Routes to School	24
	3.6 Traffic Signs	25
	3.7 Carriageway Markings	26
	3.8 Legislation	30
	3.9 Disabled Parking Bays	32
	3.10 Street Lighting	33
	3.11 Cycle Measures	36
	3.12 Traffic Calming	37
	3.13 Car Parking	38
	3.14 Residents' Parking	38
	3.15 Bus Measures	38
4.0	NETWORK TRANSPORT TELEMATICS	41
	4.1 Network Transport Telematics	42
5.0	NETWORK MAINTENANCE	45
	5.1 Carriageway Resurfacing	46
	5.2 Footway Resurfacing	48
	5.3 Drainage	50
	5.4 Surface Dressings	51
	5.5 Public Realm	52
	5.6 Streets Ahead Project (DfC)	52
	5.7 Liaison with Utilities	52
6.0	NETWORK PLANNING	55
	6.1 Adoptions	56
	6.2 Planning Applications	58

FOREWORD BY THE EASTERN DIVISIONAL ROADS MANAGER



Kevin Monaghan
Divisional Roads Manager

Mayor, Aldermen and Councillors

I am very pleased to present my Spring Report on the Department for Infrastructure Roads work to Belfast City Council.

Eastern Division covers the two Council areas of Belfast and Lisburn & Castlereagh. It is one of four Divisions, each of which manages, improves and maintains the transport network and is the primary contact point for road users and public representatives.

This report deals with works completed in the Belfast City Council area during the year 2016/17 and sets out our initial proposals for schemes to be undertaken in the year 2017/18. There are pressures on both capital and resource funding going into 2017/18. On the capital side, my staff will continue to develop resurfacing and traffic management schemes to enhance safety, to improve traffic flow and provide measures for pedestrians and cyclists. The Department will also continue to bid in monitoring rounds for further capital funding for structural maintenance to maintain the integrity of the road network.

On the resource side, we start the year only being able to deliver a reduced routine maintenance service. However, if in year bids in monitoring rounds are successful, the funding will immediately be used to normalise this service.

I am pleased to report that a wide programme of Local Transport and Safety Schemes was delivered last year. I am also pleased to report that a large programme of maintenance schemes was delivered in 2016/17, through successful in-year monitoring bids, despite a low level of funding being available at the start of the financial year. I would encourage Councillors to continue to contact the relevant members of my staff in relation to operational matters and they will do their best to assist.

I hope that you find this report informative. DfI Roads values constructive comment on all its activities and I look forward to meeting Council members on 7th June 2017.

Kevin Monaghan
Divisional Roads Manager
Eastern Division
'Hydebank'
4 Hospital Road
Belfast BT8 8JL

1.0 INTRODUCTION

Eastern Division is part of the Roads structure, within the Department for Infrastructure, made of separate Divisional business units who order services (within Network Services Directorate) and those who provide services in the Engineering Directorate (Design & Consultancy Services and Operations & Maintenance) (see figure 1 below).

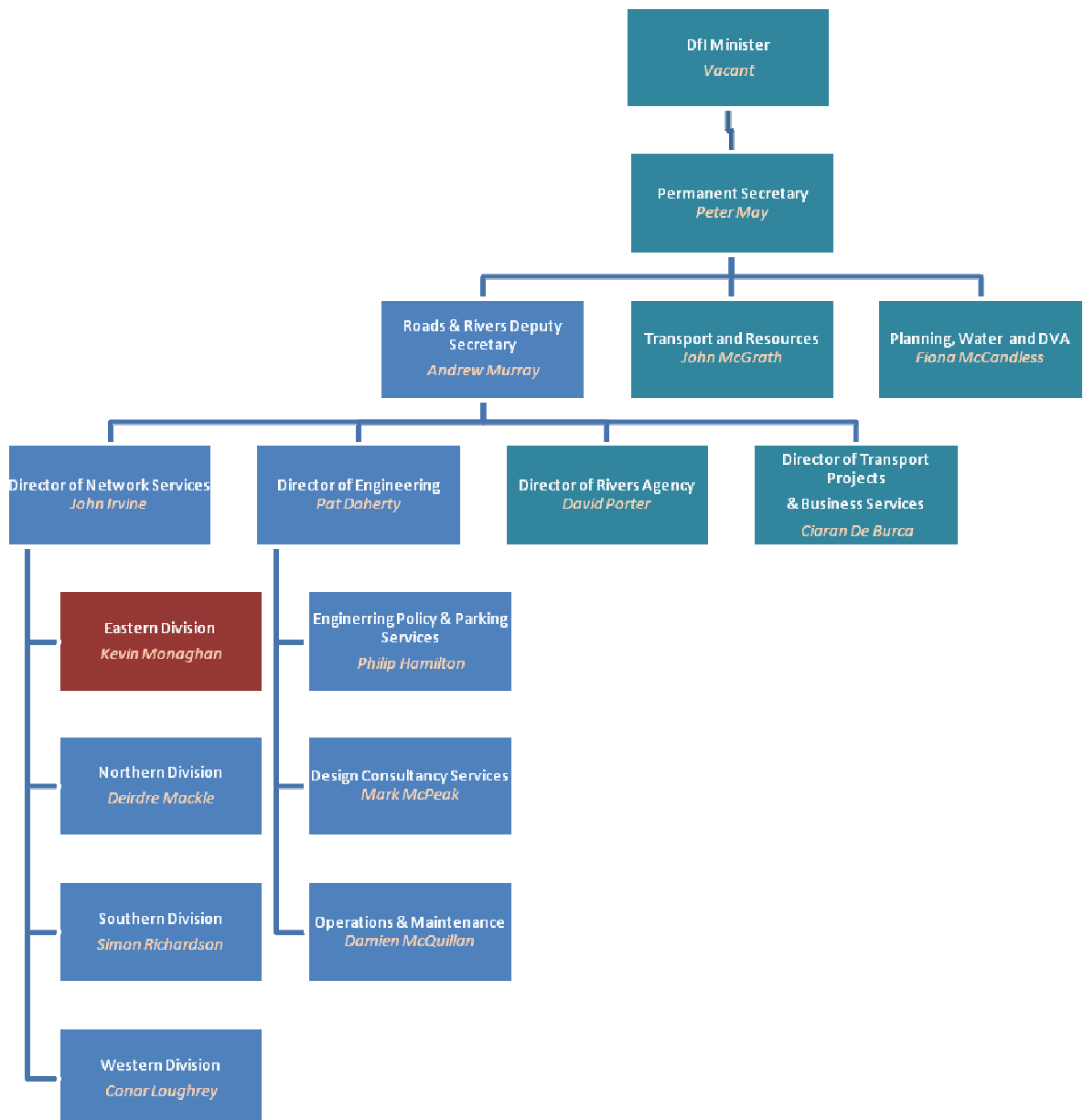


Figure 1 – Organisation Context

Eastern Division Management Structure



Kevin Monaghan (9025 3001)
kevin.monaghan@infrastructure-ni.gov.uk
Divisional Roads Manager



Philip Robinson (9025 3080) philip.robinson@infrastructure-ni.gov.uk
Network Traffic and Street Lighting

Traffic Management minor improvements, pedestrian priority, traffic orders, signing, collision remedial schemes, Street Lighting, resident and disabled parking, car parks and pay and display spaces, cycling and traffic calming. BRT infrastructure delivery and QBC & bus priority. 'Park and Ride schemes.



Lionel Walsh (9025 3060) lionel.walsh@infrastructure-ni.gov.uk
Network Planning

Development Control, Private Streets and Transport Assessments



Roy Gordon (9025 4500) roy.gordon@infrastructure-ni.gov.uk
Network Transport Telematics

Traffic signal control, operation of the Traffic Information and Control Centre, Traffic and travel information and European projects INSTANT and STREETWISE.



Attracta Tremers (9025 3036) attracta.tremers@infrastructure-ni.gov.uk
Business Support

Financial control, land acquisition and disposal, retained human resources, building management and office supplies, council reports, business plan and communications.



Stephen Pollock (9025 3071) stephen.pollock@infrastructure-ni.gov.uk
Network Development / Strategic Road Improvements

Minor works programme, maintenance and strengthening of structures, Forward Planning, Developing and progressing Strategic Highway Improvements within Eastern Division

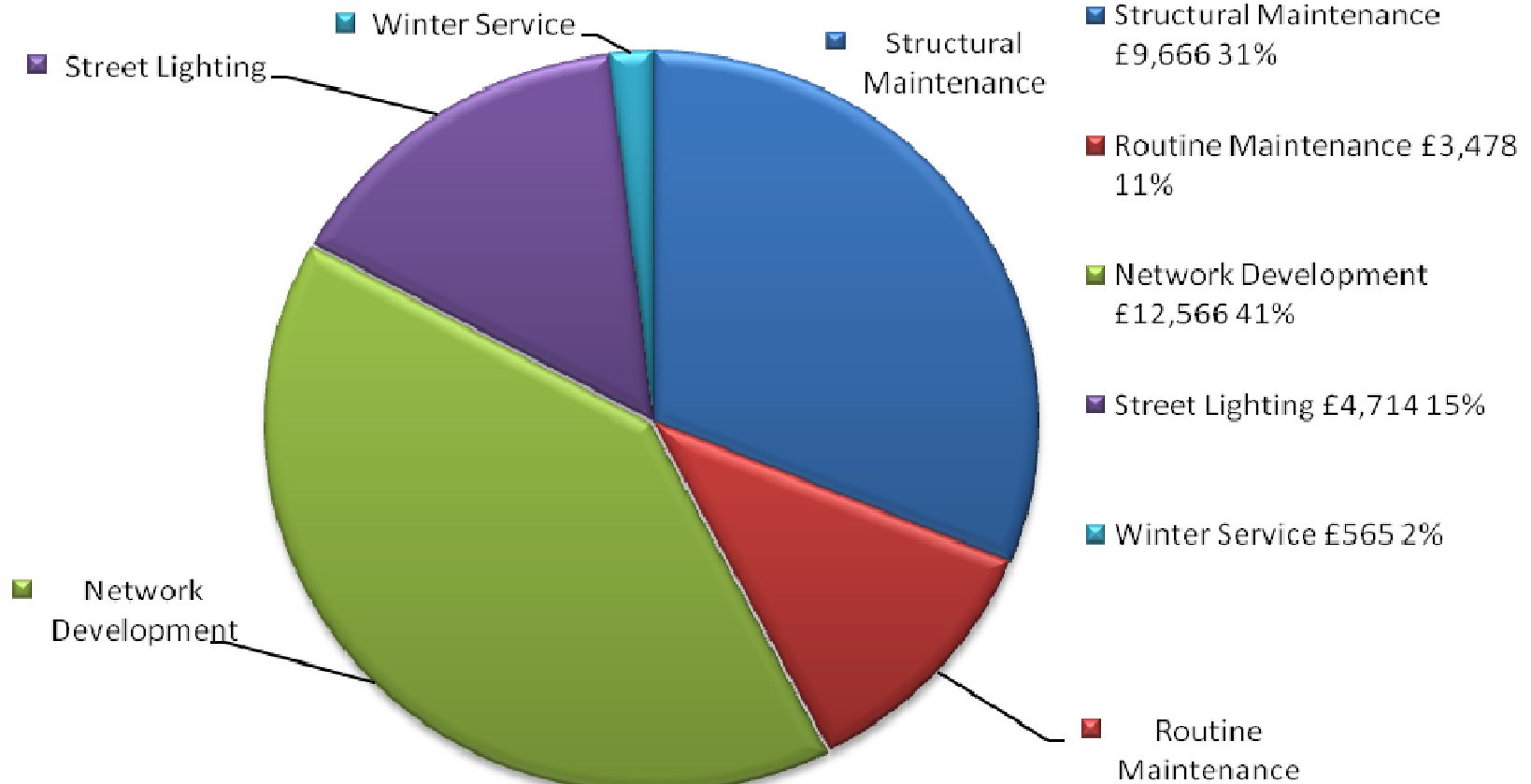


Colin Sykes (9025 3111) colin.sykes@infrastructure-ni.gov.uk
Network Maintenance

Maintenance of adopted roads and footways including inspections, resurfacing, drainage, grass cutting and weed control, winter gritting and liaison with the utility companies.

NB: Figures provided are Eastern Division's provisional outturn, which are subject to Audit before finalisation.

Eastern Division Spend 2016/17 £30,989k



Belfast City Council area – Key Statistics

Roads infrastructure	Eastern Division	Belfast City Council area
Length of public road (km)	2427	1092
Length of footway (km)	3082	2151
Number of bridges	363	104
Number of street lights	69379	47332
Number of car parks	4	3
Number of car parking spaces	2106	2071

WHAT WE DO

Maintaining the road network

Structural maintenance

Maintaining the network in a safe and serviceable condition remains one of our highest priorities.

Structural maintenance includes:

- The resurfacing and surface dressing of roads and footways
- The repair of surface defects, such as potholes and broken flagstones
- The replacement and repair of road gullies, culverts and manholes

Within the Eastern Division area in 2016/17 we:

- Invested £9.7 million on structural maintenance
- resurfaced 89.21 lane km of the road network
- resurfaced 12.98 km of footways

Condition of the network

Monitoring the condition of our road network is an essential part of planning maintenance work and, in order to detect deterioration at an early stage, we undertake a number of annual road condition surveys using specialist vehicles to measure the strength, surface condition and skidding resistance of our roads.

In 2016/17 71.2% of the motorway and 75.4% of trunk road network had a residual life of more than 5 years compared to a target of 70% respectively. The information from the survey gives us an indication of areas of the road network which require further investigation and are likely to require maintenance.

Routine maintenance

Routine maintenance is important, both to enhance user safety and to help prevent more significant and costly maintenance problems building up over time.

In Eastern Division during 2016/17 we:

- invested around £1.3 million replacing road markings, cutting grass verges to maintain visibility, emptying gullies and maintaining or replacing safety barriers, and maintaining street trees, verges and fences.
- repaired 44,239 road defects following inspections.

Managing the road

The Traffic Information and Control Centre (TICC) is located within Belfast City Council area and from this location DfI Roads manage:

- 330 sets of traffic signal controller junctions
- 600 sets of traffic signal controlled pedestrian crossings
- 45 motorway gantries
- 73 motorway Variable Message Signs
- Use approximately 160 CCTV cameras to monitor the road network in real time

We also disseminate real time travel information through the use of Social media

- with 30,715 followers on Twitter,
- in excess of 650,000 unique users on Trafficwatchni.com website in 2016 and
- approximately 3,000 users registered to receive emergency e-mail alerts.

We manage the road network to promote its safety and efficient operation. We have continued to make use of the latest technology and traffic management techniques to improve road safety, provide facilities for all road users, and effectively manage the network. This has included:

- Monitoring and management of traffic signal timings
- Responding to at least 92% of urgent traffic signal faults within 24 hours
- The use and extension of traffic control and monitoring systems
- The promotion and introduction of Puffin crossings
- The provision and management of motorway control systems
- The supply and management of road traffic signs
- The internal dissemination of collision records to help target areas of safety concern
- The provision of accurate and reliable traffic information to the public including replies to traffic count queries and the provision of the annual traffic count census report.

Within Eastern Division during 2016/17 we:

- Provided pre-trip information on the trafficwatchni website, www.trafficwatchni.com via radio broadcasts and our traffic information telephone line 08457123321.
- Commenced the upgrade of traffic signals at 1 signalised junction. [DN: other parts of Eastern Division may have undertaken similar work as well as BRT].
- Completed the migration of the Urban Traffic Control Communications system (UTC) to a new operating platform to ensure its continued robustness and expandability.
- Completed the upgrade of 2 pedestrian crossings. [DN: again other parts of Eastern Division may have undertaken similar work as well as BRT].
- Commenced the migration of the CCTV control system to a new operating platform to ensure its continued robustness and expandability.

Winter Service

The aim of winter service is to help, as far as possible, main road traffic to move safely and freely in wintry conditions by spreading salt at the most effective times.

Eastern Division, has a fleet of 22 gritters and over 100 personnel available to salt approximately, 1,306km of main roads.

There were 45 call-outs this year, using around 7,258 tonnes of salt, at a cost of approximately £13k per call-out to treat all roads on the salting schedule. Eastern Division completed 96% of winter salting actions within 4 hours, exceeding the target.

Our total winter service expenditure was £0.56 million.

Emergency Response Service

We have procedures in place to assist with roads related emergency incidents to ensure a response, 24 hours a day, 7 days a week.

Our emergency response procedures are supported by a well established reporting system to gather operational information from across Northern Ireland during an emergency. A lead communicator is available out of hours all year round to ensure that the latest news on road conditions is available to the travelling public and we have enhanced the trafficwatch website to enable the lead communicator to keep this information updated including Social Media System and Twitter.

Development Control and Private Streets

Development Control staff act as consultee to Planning Service, providing advice on road safety, traffic progression, transportation, roads layout/standards and policy compliance. During the 2016/17 financial year, Eastern Division dealt with over 2,800 planning application consultations and processed an average of 70% of these within 15 working days. In relation to new housing developments, 19km of Private Streets have been determined in 2016/17. This means that if and when the streets are built to the agreed layout and standard, they will be adopted into the public roads network. 64 new development sites have started since April 2016 representing approximately 5km of new roads and footways. At 31 March 2017 we held £23.8M in bonds, and during 2016/17, £2.6M of new bonds were processed with £2.3M released on adoption.

Street Works

Our road network is a major public asset valued at over £32 billion. It accommodates a network of underground pipes and cables which deliver key services to the public including water supply, waste water disposal, electricity, gas and telecommunications.

Utility companies have the right to open the public road to place or maintain their equipment. In 2016/17 there were 47,058 utility company road openings across Northern Ireland, with some 14,652 in Eastern Division. We work closely with utility companies to minimise disruption caused by street works and ensure better quality reinstatements.

Our Inspectors in Eastern Division have carried out over 3,991 visits to street works sites to inspect work in progress and completed reinstatements

Improving the Road Network

Major Road Improvements

Network Development Section progress the development of major road improvement schemes in the Strategic Road Improvement Programme. Delivery of these schemes is dependent on funding levels envisaged through the Investment Strategy for Northern Ireland 2011-21 and future budget settlements.

In Eastern Division there are three major road improvement schemes currently at development stage. These are the York Street Interchange, the A55 Knock Road and the A2 Sydenham Bypass.

- York Street Interchange - on the 15 November 2016, Chris Hazzard MLA, the former DfI Minister, announced the publication of the outcome of the Public Inquiry into this scheme. This included the publication of the Public Inquiry Inspector's Report and the Departmental Statement.
- The procurement process for the York Street Interchange has been progressed in parallel with the statutory process. The tender process to appoint a Contractor to bring the scheme to a construction ready stage has now been completed. However, tender award cannot occur due to a legal challenge. The legal process is ongoing.
- Following a Ministerial direction, the process of consulting local residents and key stakeholders on issues identified in the Inspector's Report has now commenced.
- A55 Knock Road – in September 2012 DfI Roads published a Departmental Statement, the Notice of Intention to Proceed and the Direction Order following the completion of public inquiry process. While there is currently no funding for this scheme, work can be progressed should additional funds become available.
- A2 Sydenham Bypass – the preferred option for the scheme was published in February 2010. While there is currently no funding for this scheme, work can be progressed should additional funds become available.

The commencement of construction for the York Street Interchange, the A55 Knock Road and the A2 Sydenham Bypass will depend on the satisfactory completion of an economic assessment, completion of the statutory process and subject to funding being made available by the Executive in future budget settlements.

Bridge Strengthening

DfI Roads regularly inspects its stock of bridges and other structures on the public road network.

Last year across Eastern Division we inspected 134 structures and carried out maintenance and repair work to 21 structures. In 2016/17 we spent a total of £240k on strengthening and maintaining our current stock of bridges, culverts and retaining walls.

Local Transport and Safety Measures

In 2016/17 we spent over £3.1 million on a range of measures to improve the safety and efficiency of the road network. In Eastern Division this included implementation of:

- 24 Minor Works improvement schemes;
- 2 Collision Remedial measures at specific sites;
- 3 Traffic Calming measures;

- 0.7 kms of new cycle facilities;
- 12 Controlled Pedestrian Crossings;
- Improvements to the trafficwatch website and the motorway control system as well as continuously ongoing work to improve the performance of our traffic signals and pedestrian controlled crossings.

Street Lighting

We provide and maintain street lighting on all adopted roads in urban areas and in certain circumstances, on rural roads.

In 2016/17 we spent £2.07 million installing new and maintaining existing lighting systems in Eastern Division. This excludes the energy costs which were £2.65 million.

Budget constraints have meant that the Department has faced periods of significant street lighting resource pressures over the last two years. While budget pressures still exist this year, our initial allocation for street lighting maintenance allows us to continue using our external contractors to carry out street lighting repairs at this time. However, the continuation of this service for the full year will depend on the outcome of monitoring rounds.

Belfast Rapid Transit (BRT)

The Department is currently implementing the infrastructure necessary for the new Belfast Rapid Transit (BRT) system.

The BRT infrastructure works have been divided into 12 individual schemes and in 2016/17 the Department spent some £8.1M on minor carriageway widening to accommodate the new bus lanes, relocation of services, improvements to signalised junctions and pedestrian crossing facilities, upgrading street lighting to LED, and resurfacing of carriageways and adjoining footways. The legislation to provide additional bus lanes has also been progressed in conjunction with these works. The BRT system is on target to become operational in September 2018.

Customer Service

DfI Roads aims to inform, consult and involve customers by:-

- supplying up-to-date information through our publications, at shows and exhibitions and via our website <http://www.drdni.gov.uk> and;
- listening to customer needs; and
- remaining open, transparent and visible at all times.

We publish a wide range of information leaflets on specific road schemes and on the services we provide. Our free newspaper, "On the Move", is published twice a year and distributed through our local offices and public libraries.

We provide up-to-date travel news through our travel information website www.trafficwatchni.com and our traffic hotline for Greater Belfast on 08457 123321. Traffic information is updated at 10 minute intervals and broadcast on BBC Radio Ulster during peak times.

During the development phase of major roads projects, we consult with a wide range of stakeholders, including elected representatives and the public and, particularly, those likely to be

directly affected by the works. We hold exhibitions at local venues and inform the public through press articles, leaflet drops and individual visits, as necessary.

During 2016/17 we received 4846 written enquiries from the general public and responded to 92% of these within 15 days.

2.0 NETWORK DEVELOPMENT/STRATEGIC ROAD IMPROVEMENT

Principal Engineer – Stephen Pollock (9025 3071) stephen.pollock@infrastructure-ni.gov.uk

He is supported by the following staff:

Works and Structures - David Grills (9025 3153)

david.grills@infrastructure-ni.gov.uk



This team is responsible for major works, minor works and Structures.

Strategic Road Improvement 2 – Basil Hassard (9025 3272)

basil.hassard@infrastructure-ni.gov.uk



Basil is responsible for development of the A2 Shore Road dual carriageway scheme, the M1 / A1 Link at Sprucefield and the Sydenham By-pass scheme. Basil is supported by Ian Kernaghan (ext 53073).

Strategic Road Improvement 1 – Colin Pentland (ext 53212)

colin.pentland@infrastructure-ni.gov.uk



Colin is responsible for progressing development of the York Street Scheme and the A55 Knock Road widening.

2.1 YORK STREET INTERCHANGE SCHEME



Preferred Option to improve York Street Interchange

Delivery of the York Street Interchange scheme remains a high priority for the Department. This scheme will address a major bottleneck on the strategic road network, replacing the existing signalised junction at York Street with direct links between Westlink, M2 and M3, the three busiest roads in Northern Ireland.

On the 15th November 2016, Mr Chris Hazzard MLA, the previous DFI Minister, announced the publication of the outcome of the Public Inquiry into the York Street Interchange proposal. This included the publication of the Public Inquiry Inspector's Report and the Departmental Statement.

The procurement process for the York Street Interchange has been progressed in parallel with the statutory process. The tender process to appoint a Contractor to bring the scheme to a construction ready stage has now been completed. However, tender award cannot occur at present due to a legal challenge. The legal process is ongoing.

Following a Ministerial approval, the process of consulting local residents and key stakeholders on issues identified in the Inspector's Report has now commenced.

2.2 M1 and M2 BUS LANES

During the last year DfI Roads developed a proposal to extend the existing M1 city bound hard shoulder busway between Ballyskeagh and Black's Road. This was to be extended back to Junction 8 at Blaris for the Sprucefield Park & Ride site. There was also a proposal to construct a new M2 city bound hard shoulder running busway between Greencastle and Duncrue Street.

A procurement process was completed in January 2017, although the tendered costs were significantly higher than expected and as a result the contract was not awarded. Currently a review of the procurement strategy and any alternative delivery of the scheme is underway, to determine if it can be procured in a more cost effective way, or with reduced requirements.

2.3 BELFAST RAPID TRANSIT (BRT)

The Department is currently implementing the infrastructure necessary for the new Belfast Rapid Transit (BRT) system.

The BRT infrastructure works have been divided into 12 individual schemes and in 2016/17 the Department spent some £8.1M on minor carriageway widening to accommodate the new bus lanes, relocation of services, improvements to signalised junctions and pedestrian crossing facilities, upgrading street lighting to LED, and resurfacing of carriageways and adjoining footways.. The legislation to provide additional bus lanes has also been progressed in conjunction with these works. The BRT system is on target to become operational in September 2018.

BRT 2016/17 Works completed

<i>Scheme</i>	<i>Status</i>
Upper Newtownards Road (Between Albertbridge Road and Sandown Road) Carriageway widening, resurfacing and improvements to drainage and pedestrian crossing facilities.	Completed May 2016
Divis Street/Falls Road (Between Millfield and Grosvenor Road) Carriageway widening, resurfacing and improvements to drainage and pedestrian crossing facilities.	Completed March 2017
Andersonstown Road/Stewartstown Road (Between Finaghy Road North and Michael Ferguson Roundabout) Carriageway widening, resurfacing and improvements to drainage and pedestrian crossing facilities.	Completed April 2017

BRT 2017/18 Programme of Works

<i>Scheme</i>	<i>Status</i>
Albertbridge Road (Between Castlereagh Street and Newtownards Road) Carriageway widening, resurfacing and improvements to drainage and pedestrian crossing facilities.	Construction in progress Programmed completion July 2017
Upper Newtownards Road (Between Knock Road and Dunlady Road) Carriageway widening, resurfacing and improvements to drainage and pedestrian crossing facilities.	Design in progress Programmed start June 2017
Falls Road/Andersonstown Road (Between Whiterock Road and Finaghy Road North) Carriageway widening, resurfacing and improvements to drainage and pedestrian crossing facilities.	Construction in progress Programmed completion Spring 2018
Stewartstown Road (Between Michael Ferguson Roundabout and McKinsty Road Roundabout) Carriageway widening, resurfacing and improvements to drainage and pedestrian crossing facilities.	Design in progress Programmed start Summer 2017

Scheme	Status
CITI Route (City Centre and Victoria Street to Queens Road) Possible resurfacing, improvements to drainage and pedestrian facilities.	Design in progress Programmed start Summer 2017
BRT Halt commission and design.	Design in progress Programmed implementation start Autumn 2017

2.4 SHAFTSBURY LINK

DfI Roads, Eastern Division has been developing proposals for road improvements along the south section of the City Centre Ring. This scheme will be much reduced in scale from that proposed in the Belfast Metropolitan Transport Plan (BMTP). It will focus on the needs of public transport, pedestrians and cyclists, as well as general traffic, and take cognisance of potential redevelopment opportunities.

An acceptable road 'footprint' would identify a number of viable and attractive sites for redevelopment to the south of the office district, between Sandy Row and Cromac Steet, and help to remove the blight that this area has suffered for many years.

2.6 MAINTENANCE OF STRUCTURES 2016/17 Inspections & Works Completed

Scheme	Status
Principal Inspections	
Bridge No 20249 – Fane Street, Footbridge	Completed
Bridge No 20250 – Tates Avenue Bridge	Completed
Bridge No 20236 – Grand Parade	Not Inspected*
Bridge No 20264 – Orby Link Bridge	Not Inspected*
Concrete/Composite Structures	
Bridge No 20189 – Sydenham By-Pass Footbridge – Extensive repairs to damaged railings.	Completed
Masonry Structures	
Bridge No 20250 – Tates Avenue Bridge – Blocking up of storage facility.	Completed
Bridge No 20254 – Ormeau Road(Road over Rail) Bridge – Parapet repairs.	Completed
Miscellaneous	
North Queen Street Steps – Concrete repairs.	Completed
Lower Braniel road – New Access steps.	Completed

*Structure replaced by DfI Rivers

MAINTENANCE OF STRUCTURES 2017/18 Programme of Inspections & Works

Scheme	Status
Principal Inspections	
Bridge No 20124 - East Bridge Street(Road).	Programmed
Bridge No 20125 - East Bridge Street(Rail).	Programmed
Bridge No 20141 – Ballygomartin Road.	Programmed
Bridge No 20143 – Springfield Road, Culvert.	Programmed
Bridge No 20151 – Old Westland Road.	Programmed
Bridge No 20152 – Westland Culvert.	Programmed
Bridge No 20153 – Fortwilliam Railway Bridge.	Programmed
Bridge No 20172 – Queens Bridge.	Programmed
Bridge No 20181 – Albert Bridge.	Programmed

<i>Scheme</i>	<i>Status</i>
Bridge No 20196 – Clara Park.	Programmed
Bridge No 20201 – Summerhill Avenue.	Programmed
Bridge No 20220 – Old Shaws Bridge.	Programmed
Bridge No 20227 – Suffolk Bridge.	Programmed
Bridge No 20255 – Ormeau Bridge.	Programmed
Bridge No 20257 – Governors Bridge.	Programmed
Bridge No 20258 – Shaws Bridge.	Programmed
Bridge No 20268 – King Road/Knock River.	Programmed
Bridge No 26790 – Great Georges Street Gantry.	Programmed
Concrete/Composite Structures	
Bridge No 20256 – Kings Bridge – Materials Testing, Structural Survey and Condition Assessment.	Programmed

3.0 NETWORK TRAFFIC AND STREET LIGHTING

Principal Engineer – Philip Robinson (9053080) philip.robinson@infrastructure-ni.gov.uk

He is supported by the following staff:

Traffic Management 1 - Paul King (9025 3029)

paul.king@infrastructure-ni.gov.uk



This team deals with traffic improvement schemes in Belfast.

Traffic Management 2 - Graeme Salmon (9025 3026)

graeme.salmon@infrastructure-ni.gov.uk



This team deals with traffic improvement schemes in Lisburn and Castlereagh and collision remedial schemes in all council areas.

Traffic Management 3 – Stephen McMeekin (90259813)

stephen.mcmeekin@infrastructure-ni.gov.uk



This team is responsible for residents' parking, development of car parking, cycle measures and traffic calming.

Street Lighting - Evans Gibson (9025 3058)

evans.gibson@infrastructure-ni.gov.uk



This team is responsible for Street Lighting and the illumination of signs.

Transportation - Harry Armstrong (9025 3022)

harry.armstrong@infrastructure-ni.gov.uk



This team is responsible for delivery of BRT Infrastructure, the Quality Bus Corridor (QBC) programme, other bus priority measures and Park and Ride.

3.1 COLLISION REMEDIAL SCHEMES 2016/17 Works Completed

<i>Scheme</i>	<i>Status</i>
Ravenhill Road / Ormeau Embankment - high friction surfacing on approach to traffic signals	Completed
Shore Road / North Queen Street - enhanced road markings and high friction surfacing	Completed

COLLISION REMEDIAL SCHEMES 2017/18 Programme of Works

<i>Scheme</i>	<i>Status</i>
Ballyutoag Road at no 60 – high friction surfacing on bend	Programmed
Old Golf Course Road / Creighton road Roundabout – enhanced signing and high friction surfacing	Programmed
Springfield Road at Springfield Avenue – high friction surfacing on approach to Zebra Crossing	Programmed

3.2 TRAFFIC SCHEMES 2016/17 Works Completed

<i>Scheme</i>	<i>Status</i>
Glen Road / Suffolk Road - signalisation	Under review

TRAFFIC SCHEMES 2017/18 Programme of Works

<i>Scheme</i>	<i>Status</i>
Programme to be finalised pending funding.	

3.3 TAXIS 2016/17 Works Completed

<i>Scheme</i>	<i>Status</i>
Public hire taxi ranks provided on High Street, Bridge Street, Dublin Road (east), Dublin Road (west) & Botanic Avenue.	In Progress
Ranks for taxi bus operation in North Street and Bridge Street.	Completed


3.3 TAXIS

2016/17 Programme of Works

<i>Scheme</i>	<i>Status</i>
DfI Roads is continuing to progress proposals for new public hire taxi ranks	Ongoing

3.4 PEDESTRIAN MEASURES

2016/17 Works Completed

<i>Scheme</i>	<i>Status</i>
<p>Oldpark Road at Oldpark Terrace – puffin crossing & channelisation</p> 	Completed
Tate's Avenue at Ebor Street – Removal of Roundabout & replacement of Zebra crossing with a Puffin crossing.	Completed
Norglen area, Turf Lodge, Belvoir Crescent, Ohio Street, Cromac Street, Donegall Street, Stranmillis Embankment, Upper Meenan Street, Dock Street at Nelson Street, North Parade, Ardenlee Avenue & Skegoneill Gardens – Dropped kerbs & tactile.	Completed

Lisburn Road at Fountainville Avenue (The Bradbury Centre) – puffin crossing.



Completed

PEDESTRIAN MEASURES

2017/18 Programme of Works

<i>Scheme</i>	<i>Status</i>
North Circular Road at Old Cavehill Road – puffin crossing	Programmed
Wyndham Street & Inverary Avenue – Dropped kerbs & tactiles	Programmed
Finaghy Road South at Hollymount Court & Trossachs Drive – 2no. Pedestrian refuge islands	Programmed

3.5 SAFER ROUTES TO SCHOOLS

2016/17 Works Completed

<i>Scheme</i>	<i>Status</i>
No schemes were provided in 2016/17	

SAFER ROUTES TO SCHOOLS

2017/18 Programme of Works

<i>Scheme</i>	<i>Status</i>
Schemes have been identified and will be progressed should funds become available	

3.6 TRAFFIC SIGNS

2016/17 Works Completed

Scheme	Status
A55 Newtownbreda Road/Belvoir Road; Upper Knockbreda Road/A24 Saintfield Road – ‘Speed Camera’ signage for 30mph limits	Completed*
A55 Upper Knockbreda Road – ‘Kingspan Stadium’ directional signage	Completed
Adelaide Street at Ormeau Ave – Upgrade to No Entry signs & lanterns	Completed
Albertbridge Road, Mountpottinger Link & Bryson Street, - New 20mph advisory speed limit signs	Completed*
Ballygomartin Road at Whiterock Road – ‘Unsuitable for heavy goods vehicle’ signage	Completed
Bedford Street at Ormeau Avenue – white on brown direction signs for Clayton Hotel	Completed*
Belfast City Centre – upgrade of 20mph signs with yellow backing boards	Completed*
Bridge Street & North Street – Taxi Bus sign plates	Completed*
Cherryville Street – 2 no. Waiting Restriction time plates	Completed*
Church Road at Manse Road – New ‘30mph speed limit’ signage	Completed
Donegall Pass – upgrade of 12 no. ‘Limited Waiting’ waiting restriction plates	Completed*
Elmwood Avenue – Bollard provided on footway	Completed
Grosvenor Road – upgrade of signs & bollards on traffic island	Completed
Grosvenor Road & Lisburn Road – Upgrade of 5 no. Urban Clearway signs	Completed*
Knockbreda Road at Cheltenham Park – 1 no. Give-way warning sign	Completed
Knockbreda Road at Rosetta Primary School – 2 no. ‘No Stopping’ waiting restriction plates	Completed*
Lower Stanfield Street – 1 no. Bollard erected to prevent vehicle access	Completed*
Malone Avenue – upgrade to One-way system signage	Completed
Nelson Street at Gt George’s Street – ‘No Right Turn’ sign	Completed*
Old Mill Road at Mountainhill Road -1 no. Children warning sign & Playground plate	Completed
Orchardville Avenue – 1 no. ‘Bend to right with junction on left’ warning sign	Completed
Ormeau Road at Shaftesbury Ave/Cooke Street – 2 no. ‘Children’ warning signs & ‘School’ plates	Completed*
Pantridge Road, Brianswell Road, Pembroke Loop Road & Colinwell Road – upgrade of speed limit signs	Completed
Rugby Avenue near Ormeau Road - ‘Limited Waiting Restriction’ time plates	Completed*
Sandymount Street, St. Ives & St. Albans Gardens – upgrade of ‘One-way traffic system’ signage	Completed*

Scheme	Status
Springfield Road – 2 no. Urban Clearway signs	Completed*
Stranmillis Embankment at Kings Bridge -'2-way traffic' warning signage	Completed
Stranmillis Road – upgrade to Urban Clearway signage	Completed
Upper Springfield Road – upgrade of speed limit signage	Completed*
Whiterock Road at Whiterock Grove/Place – 'Children' warning signs & 'Playground' plates	Completed*
York Street (Nos 202-210) – 'Limited Waiting Restriction' time plates	Completed*

*Additional to programme

TRAFFIC SIGNS

2017/18 Programme of Works

Scheme	Status
Traffic signs will be provided as required.	Ongoing


3.7 CARRIAGEWAY MARKINGS

2016/17 Works Completed

Scheme	Status
355-367 Lisburn Road -'I' bar keep clear marking	Completed
A55 Knock Road at Shandon Park/Sandown Road – white 'Guide Lines' for right-turners	Completed*
Abbetta Parade at Beersbridge Road -Double yellow line corner restrictions	Completed
Ainsworth Avenue - Pedestrian guard-railing	Completed
Antrim Road opposite New Lodge Road -'I' bar keep clear marking	Completed*
Archdale Park at Archdale Drive -Give-way junction markings	Completed*
Ardenlee Green at Ravenhill Road -Double yellow line corner restrictions	Completed
Ballysillan Park (entrance no 2-6) – 'I' bar keep clear marking	Completed*
Balmoral Road – 10 no. white direction arrows	Completed*
Barrington Gardens at Colchester Street - Double yellow line corner restrictions	Completed*
Belmont Road at Belmont Roundabout – Alteration to edge of carriageway markings	Completed
Blondin Street -'I' bar keep clear marking	Completed

Scheme	Status
Bridge Street & North Street – Taxi Bus markings	Completed
Bristol Avenue at Landsdowne Road – Additional central line markings	Completed
Broadway at Iveagh Street - Double yellow line corner restrictions	Completed*
Bryson Street at St Matthew's Church - 'I' bar keep clear marking	Completed*
Burnaby Walk at Distillery Street - Double yellow line corner restrictions	Completed*
Camden Street at Claremont Mews - Double yellow line corner restrictions	Completed*
Carmel Street -Double yellow line corner restrictions	Completed
Castle Gardens at Downview Avenue - Give-way junction markings	Completed*
Castlereagh Road at Houston Park – Alteration to central hatching for Right-turn pocket	Completed
Castlerobin Road at Dunseverick Avenue -Give-way junction markings	Completed*
Cavehill Road (North Circular Rd to Sunningdale Park) – Alteration to sheltered parking bays	Completed*
Cherryville Street – new waiting restrictions (single yellow line)	Completed*
Clifton Court Yard at Oldpark Road -Give-way junction markings & hatching	Completed
Cliftonville Road (nos 211-213) – Alteration to on-street sheltered parking bay markings	Completed*
Cooke Street at Ormeau Road - Pedestrian guard-railing	Completed*
Credenhill Park – Give-way junction marking	Completed*
Crimea Street at Shankill Road - Double yellow line corner restrictions	Completed*
Edenderry Village at Playground – Pedestrian guard-railing	Completed
Elaine Street at Stranmillis Road - 'I' bar keep clear marking at alleyways	Completed*
Essex Grove at Ormeau Road & Powerscourt Place - Double yellow line corner restrictions	Completed*
Falls Road at Rockmore Road – 'Yellow box junction' marking	Completed
Falls Road at St. Dominic's School -Give-way junction markings	Completed
Glen Grove at Glen Road -Double yellow line corner restrictions	Completed
Glenburn Manor -Give-way junction markings	Completed
Glenmachan Place - waiting restrictions (double yellow lines)	Completed*
Greenwood Avenue & Balmoral Park – New waiting restrictions yellow lines	Completed

<i>Scheme</i>	<i>Status</i>
Hatton Drive at Woodstock Road - Double yellow line corner restrictions	Completed*
Hawthorn Glen -Give-way junction markings	Completed
Heather Street -Pedestrian guard-railing	Completed
Henry Place -'I' bar keep clear marking	Completed
Highfern Gardens -Pedestrian guard-railing	Completed
Hillhead Avenue near Hillhead Park – waiting restrictions (double yellow lines)	Completed*
Inverary Drive at Station Road -Double yellow line corner restrictions & Give-way markings	Completed
Islandbawn Street at commercial entrances -'I' bar keep clear marking	Completed*
Kenmare Park, Eureka Drive, Lindsay Street, Broadway & Genoa Street New waiting restrictions yellow lines	Completed
Kinnaird Street at Antrim Road -Double yellow line corner restriction	Completed
Kinnaird Street -Double yellow line corner restrictions	Completed
Knocknagoney Road at Tillysburn Road – white 'Guide Lines' & chevron markings	Completed*
Lincoln Avenue at Vicinage Place - Double yellow line corner restrictions	Completed*
Linfield Road at entrance TDK office – Extension of single yellow lines	Completed*
Loopland Drive / Loopland Road -Double yellow line corner restrictions	Completed
M3 Slip Road/Sydenham Road Access Road -New waiting restrictions double yellow lines	Completed
Malone Avenue at Malone Road – 'Left & Right' lane arrows	Completed*
Mayo Street at Ainsworth Avenue – Give-way triangle & extension to centre warning line	Completed
McQuillan Street – 'I' bar keep clear marking	Completed*
Monagh By-Pass (Citybound) – Hazard warning lines, Slow marking & reflective road studs	Completed
Monagh Drive at Monagh Road -Give-way junction markings	Completed
Mount Street South at My Lady's Road -Double yellow line corner restrictions	Completed
North Boundary Street at Malvern Lane – new hazard/warning white lines through junction	Completed*
Oaklands Avenue at Upper Newtownards Road – Give-way junction markings & lane arrows	Completed*
Old Mill Road -at Playground – Pedestrian guard-railing	Completed
Parkmount Road at Innisfayle Road - Double yellow line corner restrictions	Completed*

Scheme	Status
Rosehead -Give-way junction markings	Completed
Rosetta Road East – Give-way junction markings & hazard/centre of carriageway lines	Completed*
Russell Park at Gilnahirk Road – Give-way junction markings	Completed*
Rutland Street, Farnham Street & Hatfield Street - 'I' bar keep clear markings	Completed
Sandymount Street – 2 no. 'I' bar keep clear marking at alleyways	Completed*
Slievegallion Drive at Slieveban Drive - Double yellow line corner restrictions	Completed*
Somerton Road at Parkmount Road - Double yellow line corner restrictions	Completed*
South Green opposite Holy Child Primary School - 'I' bar keep clear marking	Completed*
St Albans Gardens at Sandymount Street - Double yellow line corner restrictions	Completed*
Station Road at Larkfield Road - Double yellow line corner restrictions	Completed*
Stranmillis Embankment – Directional flow arrows	Completed*
Stranmillis Park, Stranmillis Gradens & Sandhurst Gardens - 'I' bar keep clear marking at alleyways	Completed*
Suffolk Road at Derryveagh Mews -Double yellow line corner restrictions	Completed
Suffolk Road at PSNI Station -'Yellow box junction' marking	Completed
Tate's Avenue at Boucher Road -Double yellow line corner restrictions	Completed*
University Square Mews -'Yellow box junction' marking	Completed
Velsheda Way – entrance to Playground - Pedestrian guard-railing 	Completed*
Victoria Avenue at Inverary Drive - Double yellow line corner restrictions	Completed*

Scheme	Status
Victoria Avenue at Victoria Road -Double yellow line corner restrictions	Completed
Waterford Street – Double yellow line corner restrictions	Completed*
York Road at Grove Place – Additional 'Zig-zag' markings at Pelican crossing	Completed
York Street (no 202-210) – Limited Waiting parking restriction lay-by markings	Completed*

*Additional to programme

CARRIAGEWAY MARKINGS

2017/18 Programme of Works

Scheme	Status
Carriageway markings will be provided as required.	Ongoing

3.8 LEGISLATION

2016/17 Works Completed

Scheme	Status
WAITING RESTRICTIONS	
Balmoral Park – Waiting restrictions (double & single yellow lines)	Completed
Belmont Church Road – At Any Time	Completed
Bridge Street and North Street – Ranks for Taxi Buses	Completed
Broadway – At Any Time	Completed
Cabin Hill Park – At Any Time	Completed
Cherryville Street – Mon-Fri 8am-6pm	Completed
Eureka Drive – Mon-Sat 10am-3pm	Completed
Glenmachan Place – At Any Time	Completed
Hillhead Avenue – At Any Time	Completed
Kenmare Park – Mon-Fri 8am-6pm	Completed
Knockbreda Road at Rosetta Primary School – 'No stopping on school entrance markings'	Completed
Knockbreda Road at Rosetta Primary School – 'No Stopping' waiting restriction	Completed
Knockbreda Road at Rosetta Primary School – 'No Stopping' waiting restriction	Completed

Scheme	Status
Lindsay Street at Community Centre – Mon-Sat 10am-3pm	Completed
Lisburn Road at Marks & Spencer car-park entrance – At Any Time	Completed
M3 Off-slip/Sydenham Road Access Road – At Any Time	Completed
Rugby Avenue – Limited Waiting	Completed
Upper Newtownards Road (Albertbridge Rd to Sandown Rd) -Bus lanes associated with BRT	Completed
Walnut Street (Alleyway) – At Any Time	Completed
Woodvale Road between Ainsworth Ave & Ballygomartin Rd – Revocation of Urban Clearway	Completed
TRAFFIC ORDERS:-	
Albertbridge Road (Castlereagh St to Newtownards Road) – Bus lanes associated with BRT	In Progress
Andersonstown Road/Stewartstown Road (Finaghy Road North to Michael Ferguson Roundabout) -Bus lanes associated with BRT	In Progress
Divis Street/Falls Road (Millfield to Grosvenor Road) -Bus lanes associated with BRT	In Progress
Dunvegan Street/Carrington Street area – One-way traffic system	In Progress
Falls Road (Grosvenor Road to Whiterock Road) -Bus lanes associated with BRT	In Progress
Rugby Avenue -One-way traffic system	In Progress

LEGISLATION

2017/18 Programme of Works

Scheme	Status
WAITING RESTRICTIONS	
Abingdon Drive at Donegall Road – At Any Time	In Progress
Camden Street – At Any Time & Revocation of 65m of Waiting Restriction (single yellow line)	In Progress
Cavehill Road at PSNI Station – At Any Time	In Progress
Cleaver Park & Cleaver Avenue – Mon-Fri 9.30am-4.30pm & At Any Time	In Progress
Essex Grove – At Any Time	In Progress
Ladas Drive at PSNI Station – At Any Time	In Progress
Lincoln Avenue – At Any Time & Mon-Sat 8am-4.30pm	In Progress

<i>Scheme</i>	<i>Status</i>
Massey Avenue at Netherleigh – Mon-Fri 8am-6.30pm	In Progress
Rugby Court - Mon-Fri 8am-6pm	In Progress
Stranmillis Road at Riddel Hall - At Any Time	In Progress
Tennent Street at PSNI Station – At Any Time	In Progress
Wellesley Avenue (no 16b to 18) – At Any Time	In Progress
TRAFFIC ORDERS	
Albertbridge Road (Castlereagh St to Newtownards Road) – Bus lanes associated with BRT	In Progress
Andersonstown Road/Stewartstown Road (Finaghy Road North to Michael Ferguson Roundabout) -Bus lanes associated with BRT	In Progress
Divis Street/Falls Road (Millfield to Grosvenor Road) -Bus lanes associated with BRT	In Progress
Dunvegan Street/Carrington Street area – One-way traffic system	In Progress
Eastleigh Crescent/Halstein Drive - One-way traffic system	In Progress
Falls Road (Grosvenor Road to Whiterock Road) -Bus lanes associated with BRT	In Progress
Rugby Avenue -One-way traffic system	In Progress

3.9 DISABLED PARKING BAYS

2016/17 Works Completed

<i>Scheme</i>	<i>Status</i>
425 Castlereagh Road	Completed
1 Clarendon Avenue	Completed
30 Clarawood Park	Completed
23 Eureka Drive	Completed
26 Florida Drive	Completed
107 Kilowen Street	Completed
7 Knockwood Grove	Completed
35 Larkfield Gardens	Completed
5 McQuillan Street	Completed
35 Norglen Gardens	Completed

<i>Scheme</i>	<i>Status</i>
16 Ponsonby Avenue	Completed
13 Surrey Street	Completed
189 York Road	Completed
BAYS REMOVED:-	
250 Ravenhill Avenue	Completed
132 Ravenhill Avenue	Completed
70 Rugby Avenue	Completed

DISABLED PARKING BAYS

2017/18 Programme of Works

<i>Scheme</i>	<i>Status</i>
'Accessible Disabled Parking Bay' applications are currently being assessed and eligible sites will be progressed to the legislative stage.	

3.10 STREET LIGHTING

2016/17 Works Completed

<i>Scheme</i>	<i>Status</i>
Alloa Street (DSD funded)	Completed
Ann Street Subway	Programmed*
Ascot Park/Gardens	Completed
Ballygomartin Road Phase 2	Completed
Bawnmore Road	Completed
Belmont Church Road	Completed
Blacks Road – Stewardstown Road at M1 slip	Completed
Bray Street	Completed
Broadway Roundabout	Programmed*

<i>Scheme</i>	<i>Status</i>
Browns Square (DfC Funded)	Completed*
Chichester Street (LED lantern retro-fit)	In Progress
Chief Street	Completed
Clifton Park Avenue (DfC funded)	Completed
Cregagh Estate	Completed
Derryvogie Avenue	Completed
Disraeli Street	Completed
Donegall Square East & West (LED Lantern retro-fit)	In Progress
Duneden Park	Completed
Eastleigh Drive	Completed
Estoril Park	Completed
Finaghy Road North	Programmed
Fortwilliam Park	Completed*
Fortwilliam Roundabout	Completed
Fruithill Park	In Progress*
Glenbryn Park	In Progress*
Herbert Street	Completed
High Street Subway	Programmed*
Hillview Road (DfC funded)	Completed
Howard Street (LED lantern retro-fit)	In Progress
Kensington Road - Footway Recon	In progress
Kincora Avenue	In Progress
Kings Park/Crescent/Drive	In Progress
Ladbrook Drive	Completed
Manor Court (DfC funded)	Completed
Manor Drive (DfC funded)	Completed
Markets Area Phase 2	In Progress

Scheme	Status
May Street (LED lantern retro-fit)	In Progress
Mongomery Road	Programmed*
Mountforde Drive	Programmed
Mountforde Road	Programmed
Mountview Street (DfC funded)	Completed
Ormiston Drive	In Progress
Osbourne Gardens	Completed
Palmer Street	Completed
Rathlin Street	Completed
Shaws Road	Completed
Springfield Heights	Completed
Springfield Road Whiterock to Monagh	Completed
St.James Road	Programmed*
Velsheda Pk/ Farringdon Gdns/ Cranbrook Gdns	Completed
Victoria Street (LED lantern retro-fit)	In Progress
Wandsworth Road	Programmed
Wellington Place (LED lantern retro-fit)	In Progress
Windsor Avenue	Completed
Windsor Park	Completed

*Additional to programme

STREET LIGHTING

2017/18 Programme of Works

Scheme	Status
Alliance Avenue	Programmed
Antrim Road (LED Lantern Retro Fit)	Programmed
Ballysillan Park	Programmed
Belvoir Road/ Knockbreda Road (LED Lantern Retro Fit)	Programmed

Scheme	Status
Bilston Road (LED Lantern Retro Fit)	Programmed
Cambrai Street (LED Lantern Retro Fit)	Programmed
Cavehill Road (LED Lantern Retro Fit)	Programmed
Crumlin Road Phase 2 (Agnes St - Hillview Rd)	Programmed
Donegal Road/ Falls Road - Broadway	Programmed
Evelyn Avenue	Programmed
Hollywood Road Phase 1	Programmed
Mount Merrion Avenue (LED Lantern Retro Fit)	Programmed
Mountpottinger Road	Programmed
Ormeau Embankment	Programmed
Ravenhill Road Phase 1	Programmed
Rodney Parade	Programmed
Rosetta Road (LED Lantern Retro Fit)	Programmed
Sintonville Avenue	Programmed
St Katharine's Road	Programmed
Sydenham By-Pass (LED Lantern Retro Fit)	Programmed
Tamery Pass	Programmed
Tennent Street (LED Lantern Retro Fit)	Programmed
Tillysburn High Masts (LED Lantern Retro Fit)	Programmed
Upper Galwally (LED Lantern Retro Fit)	Programmed
Upper Knockbreda Road (LED Lantern Retro Fit)	Programmed
Upper Ormeau Road at Forestside (LED Lantern Retro Fit)	Programmed
West Circular Road (LED Lantern Retro Fit)	Programmed
Woodvale Road (LED Lantern Retro Fit)	Programmed

3.11 CYCLE MEASURES

2016/17 Works Completed

<i>Scheme</i>	<i>Status</i>
----------------------	----------------------

<i>Scheme</i>	<i>Status</i>
Castle Street / Donegall Place to Queen Elizabeth II Bridge cycleway	2017/18
College Avenue to Castle Street / Donegall Place cycleway	Completed
Queen Elizabeth II Bridge to Island Street cycleway	2017/18
Westlink / Grosvenor Road to College Avenue cycleway	Completed

CYCLE MEASURES

2017/18 Programme of Works

<i>Scheme</i>	<i>Status</i>
Castle Street / Donegall Place to Queen Elizabeth II Bridge cycleway	Programmed
Queen Elizabeth II Bridge to Island Street cycleway	Programmed

3.12 TRAFFIC CALMING

2016/17 Works Completed

<i>Scheme</i>	<i>Status</i>
Ladybrook Park – Reconstruction of Traffic Calming Measures	Completed
Riverdale Gardens – Traffic Calming Scheme	Completed
Rochester Road – Traffic Calming Scheme	In progress
Shandon Park – Replacement of pinch point	Completed

TRAFFIC CALMING

2017/18 Programme of Works

<i>Scheme</i>	<i>Status</i>
No programmed schemes.	

It should be noted that all Traffic Calming schemes are subject to a legislative process and to the availability of funding before they can proceed.

The legislative process provides for representations / objections to be received on our proposals. Where residents do not support individual schemes or where objections are received, it may not be possible to deliver our intended programme. In this event substitutions, on a Division-wide basis, may be made throughout the financial year.

3.13 CAR PARKING

2016/17 Works Completed

<i>Scheme</i>	<i>Status</i>
Eastside Park and ride Refreshment of carriageway markings	Completed
Northside Park and Ride Refreshment of carriageway markings	Completed
Saintfield Road Car Park, Lisburn Environmental Work	Completed*
Motorcycle parking bays added- Brunswick Street, May street and College Square East	Completed

CAR PARKING

2017/18 Programme of Works

<i>Scheme</i>	<i>Status</i>
No programmed schemes	

* Additional to programme

3.14 RESIDENTS' PARKING

The formal consultation for the Lower Malone area was carried out between 29 October 2014 and 19 November 2014. During this time we received a significant number of objections and representations on the proposal, Officials will be reviewing this proposal.

The formal consultation with the residents and businesses within the College Park Avenue / Rugby Road areas have been completed and DfI Roads are pleased to say that we intend to implement a scheme at College Park Avenue / Rugby Road, subject to satisfactory completion of the statutory procedures, in 2017.

3.15 BUS MEASURES

2016/17 Works Completed

<i>Scheme</i>	<i>Status</i>
Black's Road Park and Ride – Provision of an additional 307 spaces. (Associated with Traffic Management Strategy for York Street Interchange)	Planning Approval granted Feb 2017. Design being finalised prior to entering the tender process.

BUS MEASURES**2017/18 Programme of Works**

<i>Scheme</i>	<i>Status</i>
Glen Road –Belfast. Provision of hard stand on grass verge to facilitate new bus stop.	Programmed

4.0 NETWORK TRANSPORT TELEMATICS

Principal Engineer – Roy Gordon (9025 4500) roy.gordon@infrastructure-ni.gov.uk

He is supported by the following staff:

Declan Murphy (90 254536) declan.murphy@infrastructure-ni.gov.uk

This team is responsible for the day to day running of the Traffic Information and Control Centre. It is responsible for the installation, maintenance and operation of Intelligent Transport Systems (ITS) including traffic control on the urban and motorway networks and the provision of traffic and travel information.



Vacant:

This team has specific responsibilities for issues of Road Safety including the internal dissemination of collision records, supply of signs, the Road Safety Engineering Report, traffic counting including the publication of the Annual Traffic and Travel Information (Census) Report. This unit will continue to have a strategic overview of road safety and the analysis of collision data on roads across the Province.



TICC's TrafficwatchNI website



M1 / A12 Westlink Managed Route

4.1 NETWORK TRANSPORT TELEMATICS

2016/17 Works Completed

<i>Scheme</i>	<i>Status</i>
TRAFFIC AND TRAVEL INFORMATION	
We will continue to enhance the Trafficwatchni website and improve our social media facilities as appropriate.	Ongoing
URBAN CLOSED CIRCUIT TELEVISION (CCTV) CAMERAS	
Review CCTV coverage to ensure its continued adequacy and identify camera locations that are in need of upgrade.	Ongoing
Identify new locations where the provision of cameras will enhance the coverage of the CCTV network, to improve traffic control capabilities.	Ongoing
Provide increased resilience and capacity enhancements to the CCTV control system by migrating hardware onto an IP platform.	Commenced
TRAFFIC CONTROL SYSTEMS	
Utilise TICC's communications and control infrastructure together with the CCTV network to ensure traffic flows are monitored and effectively managed on the urban and motorway networks.	Ongoing
We will monitor traffic signal timings to ensure they are appropriate for the prevailing traffic conditions.	Ongoing
Subject to adequate funding Albertbridge Road at Woodstock Link has been identified for traffic signal equipment upgrade.	Completed
Provide increased resilience to the traffic control system by migrating traffic signals to utilise more reliable IP (internet protocol) based communications	Completed
TRAFFIC MANAGEMENT	
We will undertake an Options Study to alleviate queuing on the M1 Black's Road offslip	Completed
PEDESTRIAN MEASURES	
Subject to adequate funding the following locations have been identified for upgrade; <ul style="list-style-type: none"> • Castlereagh Rd at Prince Regent Rd – Pelican to Puffin upgrade • Ladas Drive at Orangefield Crescent – Pelican replacement • Lisburn Road at Camden Street – Pelican to Puffin Upgrade • Lisburn Road @ Ulsterville Street – Pelican to Puffin Upgrade 	Completed Completed Programmed Programmed

Scheme	Status
CENTRAL ROAD SAFETY UNIT	
This unit will continue to have a strategic overview of road safety and the analysis of collision data on roads across the Province.	Ongoing

NETWORK TRANSPORT TELEMATICS 2017/18 Programme of Works

Scheme	Status
TRAFFIC AND TRAVEL INFORMATION	
We will continue to enhance the Trafficwatchni website and improve our social media facilities as appropriate.	Ongoing
URBAN CLOSED CIRCUIT TELEVISION (CCTV) CAMERAS	
Review CCTV coverage to ensure its continued adequacy and identify camera locations that are in need of upgrade.	Ongoing
Identify new locations where the provision of cameras will enhance the coverage of the CCTV network, to improve traffic control capabilities.	Ongoing
TRAFFIC CONTROL SYSTEMS	
Utilise TICC's communications and control infrastructure together with the CCTV network to ensure traffic flows are monitored and effectively managed on the urban and motorway networks.	Ongoing
We will monitor traffic signal timings to ensure they are appropriate for the prevailing traffic conditions.	Ongoing
Subject to adequate funding be made available we will upgrade traffic signal equipment as required. The following location has been identified for upgrade; <ul style="list-style-type: none"> Ballygomartin Road / Forthriver Road 	Programmed
Subject to adequate funding be made available we will upgrade traffic signal equipment as required. The following location has been identified for upgrade; <ul style="list-style-type: none"> Ballygomartin Road / Forthriver Road 	Programmed
PEDESTRIAN MEASURES	
Subject to adequate funding the following location has been identified for upgrade; <ul style="list-style-type: none"> Great Victoria Street at Wellwood Street – Pelican to Puffin Upgrade 	Programmed
CENTRAL ROAD SAFETY UNIT	
This unit will continue to have a strategic overview of road safety and the analysis of collision data on roads across the Province.	Ongoing

5.0 NETWORK MAINTENANCE

Principal Engineer – Colin Sykes (9025 3111) colin.sykes@infrastructure-ni.gov.uk

He is supported by the following staff:

Belfast South Section Engineer – Gabriel Doherty
(9025 4609) Gabriel.doherty@infrastructure-ni.gov.uk

1a Airport Road, Belfast, BT3 9DY
(As Belfast North below)



Belfast North Section Engineer – Trevor McClay
(9025 4044) trevor.mcclay@infrastructure-ni.gov.uk

148 – 158 Corporation Street, Belfast, BT1 3DH
This team is responsible for contacts with the public and elected representatives, highway inspections, resurfacing, responsive repairs, routine maintenance, winter gritting, road opening consents and licences, public liability claims and liaison with the service utility companies.



Support Services Manager- Bill Fulton
(90253364) bill.fulton@infrastructure-ni.gov.uk

This team is based at Hydebank and is responsible for general co-ordination, bidding, allocating and monitoring finances, maintenance of safety fences, contract monitoring, statistics and enforcement.



5.1 CARRIAGEWAY RESURFACING

2016/17 Works Completed

<i>Scheme</i>	<i>Status</i>
BELFAST SOUTH	
From April 2016 to March 2017, 13.50km of carriageway has been resurfaced in the Belfast South area. This equates to 42,285 sqm and includes the schemes listed below.	
Annadale Avenue	Completed
Ballynahatty Road - Part	Completed *
Dee Street / Sydenham By-Pass Remedial Work	Completed
Edenderry Road - Part	Completed *
Edith Street	Completed *
Fort Road	Completed *
Giants Ring Road - Part	Completed *
Haig Street	Completed *
Hampton Park	Ongoing
Kensington Road	Completed
Kingsway – Black’s Road to M1 Bridge	Completed
Kingswood Street - Part	Completed *
Knockdene Park North	Completed
Mersey Street	Completed
Orchardville Avenue – Part	Ongoing*
Ormiston Drive	Completed
Parkgate Avenue	Completed
BELFAST NORTH	
From April 2016 to March 2017, 19.58km of carriageway has been resurfaced in the North Belfast area. This equates to approximately 67,000sqm and includes the completed schemes listed below.	
Acacia Avenue*	Completed
Antrim Road – No.742 to SL 179	Completed
Ballygomartin Road (Rural section)	Completed*
Broom Park	Completed*
Crumlin Road – Agnes Street Clifton Park Avenue junction	Completed
Finaghy Road North – Andersonstown Road to Appleton Park	Completed
Fortwilliam Roundabout	Completed
Gardenmore Road – Broom Park to Twinbrook Road	Completed

<i>Scheme</i>	<i>Status</i>
Glen Road – Ramoan Gardens to Shaws Road	Completed
Good Shepherd Road – Pembroke Loop Road to end	Completed
Isadore Avenue – Springfield Road to Springfield Parade	Completed
Kingsway – Motorway Bridge at Macro to No. 195	Completed
Ladybrook Ave -Ladybrook Cres to Ladybrook Park	Completed
Ladybrook Cres -Ladybrook Park to end	Completed
Ladybrook Drive -Ladybrook Cres to Ladybrook Park	Completed
Ladybrook Parade -Ladybrook Park to Ladybrook Cres	Completed
Lagmore View – Lagmore Avenue to bus turning circle	Completed
Rosapenna – Oldpark Road to Cliftonville Road	Completed
Summerhill Drive – From Summerhill Road to Thornhill Crescent	Completed
Thornhill – From Summerhill Drive to end	Completed
Upper Springfield Road – Monagh By Pass to Hannahstown Hill	Completed
Whitebrae Road	Completed*
Wolfhill Road	Completed*

* Additional to programme

CARRIAGEWAY RESURFACING

2017/18 Programme of Works

<i>Scheme</i>	<i>Status</i>
BELFAST SOUTH	
Ascot Gardens	Programmed
Ascot Park	Programmed
Ballygomartin Road - West Circular to Springmartin Road	Programmed
Belmont Church Road	Programmed
Brianswell road	Programmed
Clare Glen	Programmed
Crumlin Road	Programmed
Glenbawn Avenue	Programmed
Glenkeen	Programmed

<i>Scheme</i>	<i>Status</i>
Hillside Drive	Ongoing
Hillside Gardens	Ongoing
Hillside Park	Ongoing
Old Park Road	Programmed
Onslow Parade	Programmed
Ravenhill Park	Programmed
Sydney st west	Programmed
University Avenue	Programmed
Victoria Gardens	Programmed
Windsor Avenue/ Windsor Avenue North	Programmed
BELFAST NORTH	Programmed
Ballygomartin Road - West Circular to Springmartin Road	Programmed
Brianswell Road	Programmed
Clare Glen	Programmed
Columbia Street	Programmed
Crumlin Road	Programmed
Glenbawn Avenue	Programmed
Glenkeen	Programmed
Leopold Street	Programmed
Old Park Road	Programmed
Palmer Street	Programmed
Rosebank Street	Programmed
Sydney Street West	Programmed
Victoria Gardens	Programmed

5.2 FOOTWAY RESURFACING

2016/17 Works Completed

<i>Scheme</i>	<i>Status</i>
BELFAST SOUTH	
From April 2016 to March 2017, 3.71km of footway has been resurfaced in the Belfast South area. This includes the schemes listed below.	

<i>Scheme</i>	<i>Status</i>
Belmont Church Road	Completed
Constance Street	Completed *
Edith Street	Completed *
Haig Street	Completed *
Kensington Road	Completed *
Kingswood Street - Part	Completed *
Kingsway No100 to No129	Completed
Mersey Street	Completed *
Orchardville Avenue - Part	Ongoing
Ormiston Drive	Completed *
Parkgate Avenue	Completed *
BELFAST NORTH	
From April 2016 to March 2017, 5.70 km of footway has been resurfaced in the North Belfast area. This includes the completed schemes listed below.	
Finaghy Road North – Andersonstown Road to Appleton Park	Completed
Corrib Avenue	Completed*
Dungloe Crescent -Remote footway	2017/18
Glen Road – Remote footway	2017/18
Ladybrook Ave -Ladybrook Cres to Ladybrook Park	Completed
Ladybrook Cres -Ladybrook Park to end	Completed
Ladybrook Drive -Ladybrook Cres to Ladybrook Park	Completed
Ladybrook Pde -Ladybrook Park to Ladybrook Cres	Completed
Naroon Park – Remote footway	Completed
Rockville street -Falls Road to end	2017/18
Shaws Road – Remote footway	2017/18
Summerhill Drive*	Completed
Sunningdale Park – Cavehill Road to end	Completed
Thornhill Crescent*	Completed

*Additional to programme

FOOTWAY RESURFACING

2017/18 Programme of Works

<i>Scheme</i>	<i>Status</i>
BELFAST SOUTH	
Ascot Gardens	Programmed
Ascot Park	Programmed
Hillside Drive	Ongoing
Hillside Gardens	Ongoing
Hillside Park	Ongoing
Onslow Parade	Programmed
Ravenhill Park	Programmed
University Avenue	Programmed
Windsor Avenue/ Windsor Avenue North	Programmed
BELFAST NORTH	
Columbia Street	Programmed
Dungloe Crescent -Remote footway	Programmed
Glen Road – Remote footway	Programmed
Leopold Street	Programmed
Rockville street -Falls Road to end	Programmed
Rosebank Street	Programmed
Serpentine Road	Programmed
Shaws Road – Remote footway	Programmed

5.3 DRAINAGE

2016/17 Works Completed

<i>Scheme</i>	<i>Status</i>
BELFAST SOUTH	
College Park Avenue SUDS Scheme	Ongoing
Feasibility Study for storm drainage at Ormonde Park / Upton Park	Ongoing
Replacement of Storm Culvert Grills on Parkway	Ongoing
BELFAST NORTH	
Cavehill Road at Henderson Avenue	Completed

<i>Scheme</i>	<i>Status</i>
Crumlin Road opposite Mater Hospital	2017/18
Forthriver Road*	Completed
Glen Road at No.61*	Completed
Glengall Street at Europa Service Centre	2017/18
North Link	Completed
Riverdale Park South*	Completed
Riverdale Park West*	Completed
Stewartstown Road between Michael Ferguson Roundabout and Bellsteel Road*	Completed
Woodside Drive*	Completed

*Additional to programme

DRAINAGE

2017/18 Programme of Works

<i>Scheme</i>	<i>Status</i>
BELFAST SOUTH	
College Park Avenue SUDS Scheme	Ongoing*
Feasibility Study for storm drainage at Ormonde Park / Upton Park	Ongoing
BELFAST NORTH	
Crumlin Road opposite Mater Hospital	Programmed
Duffield Park	Programmed
Forthriver Road (additional works)	Programmed
Glengall Street at Europa Service Centre	Programmed

*Additional to programme.

5.4 SURFACE DRESSINGS

2016/17 Works Completed

<i>Scheme</i>	<i>Status</i>
BELFAST SOUTH	
From April 2016 to March 2017, 1,000sqm of surface dressing has been carried out in the South Belfast area. This includes the scheme listed below	
A2 Sydenham By-Pass at Dee Street – renewal of High Friction Surface	Ongoing

5.5 PUBLIC REALM Streets Ahead Project (DfC)

2016/17 Works Completed

The first phase of The Belfast Streets Ahead project funded by DfC, which aimed to improve the public areas of Belfast City Centre came to an end in July 2012. This work involved the reconstruction of streets with granite paving, the provision of new street furniture, lighting, signs and landscaping and also included some public art and sculpture. Future maintenance of these streets now rests with DfI Roads.

5.6 Streets Ahead Project (DfC)

2016/17 Works Completed

<i>Scheme</i>	<i>Status</i>
---------------	---------------

Streets Ahead Project (DfC)

2017/18 Programme of Works

<i>Scheme</i>	<i>Status</i>
BELFAST NORTH	
Peters Hill/Shankill Road	Confirmed with DfC
Albert Street	Confirmed with DfC
Ligoneil Road	Confirmed with DfC
The Bullring	Confirmed with DfC

5.7 LIAISON WITH UTILITIES

2016/17 Works Completed

<i>Scheme</i>	<i>Status</i>
NI WATER	
DfI Roads staff will continue to work closely with NI Water and their Consultants on the major upgrade of NIW mains infrastructure throughout Belfast	Ongoing
PHOENIX GAS	
No major infrastructure builds notified. Service connection for new customers may occur.	Ongoing
VIRGIN MEDIA	
No major infrastructure builds notified. Service connection for new customers may occur.	Ongoing
POWER NI	
No major infrastructure builds notified. Service connection for new customers may occur.	Ongoing

Scheme	Status
BT	
No major infrastructure builds notified. Service connection for new customers may occur.	Ongoing

LIAISON WITH UTILITIES

2017/18 Programme of Works

Scheme	Status
NI WATER	
DfI Roads staff will continue to work closely with NI Water and their Consultants on the major upgrade of NIW mains infrastructure throughout Belfast and in particular North Belfast.	In Progress
PHOENIX GAS	
No major infrastructure builds notified. Service connection for new customers may occur.	Ongoing
VIRGIN MEDIA	
No major infrastructure builds notified. Service connection for new customers may occur.	Ongoing
BT	
No major infrastructure builds notified. Service connection for new customers may occur.	Ongoing
POWER NI	
No major infrastructure builds notified. Service connection for new customers may occur.	Ongoing

6.0 NETWORK PLANNING

Principal Engineer – Lionel Walsh (90253060) lionel.walsh@infrastructure-ni.gov.uk

He is supported by the following staff:

Development Control Team 1 – Sid Stevenson (9025 3588)

sid.stevenson@infrastructure-ni.gov.uk

This team manages the review of Transport Assessments associated with planning applications, Strategic/Significant Planning Applications and Private Streets determinations, bonds and adoption certificates for the Division.



Development Control Team 2- Stephen Cash (9025 3151)

stephen.cash@infrastructure-ni.gov.uk

This team deals with development control for the Lisburn & Castlereagh Council area. Stephen also provides specialist advice on development control issues.



Development Control Team 3 – Geoff Lawther (9025 3154)

geoff.lawther@infrastructure-ni.gov.uk

This team deals with development control for Belfast Council area and Titanic Quarter. Geoff also provides specialist advice on development control issues in these areas.



Development Planning – Conleth Sloan (9025 3116)

conleth.sloan@infrastructure-ni.gov.uk

This team deals with development planning for Lisburn and Castlereagh, and Belfast Council areas. Conleth also provides transport advice to Local Transport Plans and Community Plans for the Division and the coordination of Eastern Division input to regeneration/public realm projects.



6.1 ADOPTIONS

Adoptions completed from last spring report

Location	Length Adopted (M)
Alliance Road	38m of footway (to rear of new lay-by fronting house No's 85-87).
Andersonstown Road	202 Andersonstown Road: 45 linear metres of footway. (<i>Adoption excludes down spout gullies</i>). 10m ² of carriageway entrance. (<i>Rear entrance to shops</i>).
Andersonstown Road	Andersonstown Road: 88 square metres of footway at rear of new lay-by. Slievegullion Drive: 51 square metres of footway at rear of new lay-by.
Ardmonagh Gardens	7.5 linear metres of traditional carriageway and associated footway. 65.5 linear metres of footway and 54m ² of lay-by parking (house No's 77 – 97 and to side of No 74)
Avoca Close	Avoca Close: 57 linear metres of shared carriageway with turning head and service strips. Avoca Manor: 56 linear metres of widened footway and sight splay.
Bombay Street	7 linear metres of traditional carriageway and associated footway. 66 linear metres of footway at rear of new lay-by, plus 0.5m wide strip of lay-by totalling 24m ² (fronting houses No's 13-23 and 22 – 26).
Brompton Park	Brompton Park: 55 linear metres of footway. Havana Way: 10 linear metres of footway. 19 linear metres of footway (to the rear of new lay-by opposite junction Ardoyne Avenue).
Brucevale Park	17 linear metres of footway widening and 5.88m ² of carriageway entrance (at house No 17). (<i>Adoption excludes tree pits</i>).
Burghley Mews	75 linear metres of traditional carriageway with associated footways plus 109 linear metres of shared surface carriageway (including turning head) with 2m wide service strip and 96 square metres of end –on parking.
Carrick Hill	71 linear metres of footway (house no 51-55).
Denmark Street	25 linear metres of traditional carriageway (fronting the Growing Garden).
Devonshire Street	Devonshire Street: 45 Linear metres of traditional carriageway with associated footways. Devonshire Place: 40 linear metres of traditional carriageway with associated footways. Devonshire Close: 45 linear metres of traditional carriageway and associated footways. Albert Court: 20 Square metres of footway.
Dundela Close	143m ² of mews court carriageway.
Dunmisk Walk	89 linear metres of shared surface carriageway with associated service strips and buffer strips, plus 245 square metres of lay-by parking.
Finnis Grange	Finnis Grange: 87 linear metres of traditional carriageway (including turning head) with footways and 46 square metres of lay-by parking. Finnis Drive: 62 linear metres of existing footway widened by 0.2 metres.
Fitzwilliam Square	59 square metres of traditional carriageway with 31 square metres of footway.

Location	Length Adopted (M)
Forthriver Crescent / Fernhill Drive	Forthriver Crescent: 110.4 linear metres of traditional carriageway associated footway, turning head and 170m ² of lay-by parking. 43m ² of footway (sightline at house No 139). Fernhill Grove: 50.35 linear metres of traditional carriageway associated footway and turning head. Forthriver Road: 18m ² of footway (sightline at house no 170).
Frazer Link	70 linear metres of combined footway/cycle path from Newtownards Road to Frazer Pass.
Fruithill Court (Enforcement site)	139 linear metres of shared surface carriageway with 108 linear metres of service strip, (2m wide), and 98 square metres of end-on parking bays.
Garnerville Road	45 linear metres of footway.
Garton Way	378 linear metres of footway (house no 2 to 54).
Glen Road	11 Linear metres of widened footway (adjacent to 412 Glen Road).
Glenbank Drive	59 linear metres of footway (opposite house no's 21-45).
Glenbryn Park	33 linear metres of footway widening (house No's 103-111).
Highdene Gardens/Highfern Gardens/Highview Crescent	Highdene Gardens: 272m ² of lay-by parking plus 90m ² of footway (No's 3-21). Highfern Gardens: 80m ² of lay-by parking plus 72m ² of footway (No's 80-86) and 114m ² of lay-by parking plus 62m ² of footway (No's 17-23). Highview Crescent: 280m ² of lay-by parking plus 102m ² of footway (No's 4-38).
Highfield Drive	95m ² of lay-by parking 29m ² of carriageway widening at bends (No's 1-24). 14 linear metres of traditional carriageway and associated footway (No's 128-130).
Kingsway	33 linear metres of footway and 0.4 metre wide strip of lay-by parking totalling 6.4m ² (fronting No's 145-143).
Ligoniel Road	44 linear metres of footway (fronting no 148).
Mill Race	Mill Race: 372 linear metres of traditional carriageway with associated footways. Springfield Road: 4.5 x 90 metres visibility splay and 4.5 x 40 metres visibility splay.
Old Forge	158 metres of traditional carriageway with associated footways (including turning head), 91 metres of 0.5 metre wide grass verge, 33 metre forward visibility splay and 237 square metres of parking.
Old Suffolk Road	Opposite no. 31 to end of footway at house no 35: 28 linear metres of footway. Entrance bellmouth and in line with footway at house no 35: 6 linear metres of carriageway.
Palmer Street	83 linear metres of footway. (Adoption includes corner improved radius junction Rathlin Street).
Pitt Place	83 linear metres of traditional carriageway and associated footways.
Priory Park	20 square metre of footway.
Rockmount Street	49 linear metres of footway (fronting house no's 1 to 5).
Sandown Park South	25 linear metres of traditional carriageway with footway on one side only (0.5m wide buffer strip on opposite side), 114 linear metres of shared surface carriageway with turning head and 2m wide service strip.
Sheringhurst Park	64 linear metres of footway widening and 4 linear metres of traditional carriageway entrance – (fronting Lowood primary school).
Stewart Street	63 linear metres of footway – (opposite house no's 25-39).

Location	Length Adopted (M)
Suffolk Glen	<p>Suffolk Glen: 177 Linear metres of traditional carriageway with turning head and associated footways.</p> <p>Suffolk Road: 70 square metres of footway for visibility splays.</p>
Tudor Grove	<p>Tudor Grove: 125 linear metres of traditional carriageway with associated footways plus 290 square metres of parking. Also 37 linear metres of brick paved mews/court type carriageway with 100 square metres of parking bays. <i>(Adoption excludes wall, railings and brick pillars that divide brick paved area from traditional carriageway).</i></p> <p>Tudor Place: 43 linear metres of footway. <i>(Adoption excludes brick paved landscaping at corner with Crumlin Road and stone sculpture thereon).</i></p> <p>Crimeria Street: 35 linear metres of footway.</p> <p>Snugville Street: 86 linear metres of footway. <i>(Adoption excludes brick landscaping at corner with Crumlin Road and stone sculpture thereon).</i></p>
Vistula Street	<p>Vistula Street: 59 square metres of carriageway with 108 square metres of footway plus 25 square metres of buffer strip. <i>(Adoption excludes area beyond flush kerb in carriageway).</i></p> <p>Crumlin Road: 81.5 linear metres of widened footway behind new parking lay-by.</p>
Workman Avenue	9 square metres of new footway to rear of existing footway.
Wyndham Drive	56 linear metres of footway at rear of new lay-by plus 0.4 metre wide strip of lay-by totalling 19.2m ² (fronting house No's 1-9).
York Road	60 metres of widened footway at rear of new lay-by at Grove health and wellbeing centre.

6.2 PLANNING APPLICATIONS

DfI Roads Development Management teams provide specialist information and transportation advice to Belfast City Council Planning Service or DfI Planning (as the case may be), on road related matters associated with proposed development applications.