

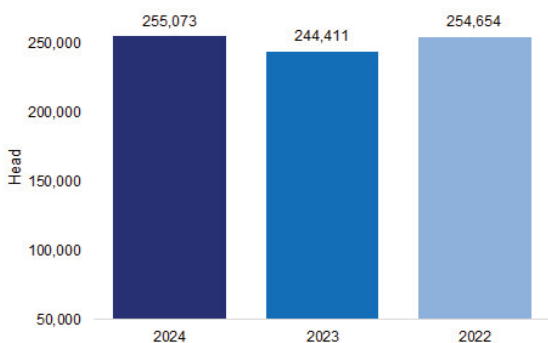
## DEADWEIGHT CATTLE TRADE

### NI FACTORY BASE QUOTES FOR CATTLE

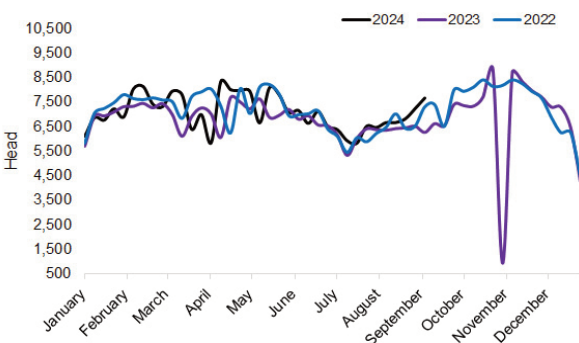
(P/KG DW)	This Week 09/09/24	Next Week 16/09/24
<b>Prime</b>		
U-3	466 - 476p	466 - 476p
R-3	460 - 470p	460 - 470p
O+3	454 - 464p	454 - 464p
P+3	398 - 408p	398 - 408p
<b>Cows</b>		
O+3	355 - 375p	355 - 375p

Cow quotes vary depending on weight and grade. Pricing policies vary from plant to plant. Producers are advised to check pricing policies before presenting cattle for slaughter.

Prime cattle throughput in NI plants 2022 - 2024 year to date. Source: DAERA.



Prime cattle throughput in NI plants 2022 - 2024 year to date. Source: DAERA.



### REPORTED NI CATTLE PRICES - P/KG

W/E 07/09/24	Steers	Heifers	Young Bulls
U3	490.7	495.4	487.7
R3	487.7	489.7	480.6
O+3	480.5	481.6	463.0

\*Prices exclude AA, HER, WAG and Organic cattle

### REPORTED COW PRICES NI - P/KG

W/E 07/09/24	Weight Bands			
	<220kg	220-250kg	250-280kg	>280kg
P1	247.5	264.1	280.7	297.4
P2	264.3	289.9	319.1	335.1
P3	292.8	309.7	336.8	347.4
O3	301.9	351.2	354.5	360.5
O4	300.6	358.0	351.4	362.4
R3	-	-	372.0	383.0

### Deadweight Cattle Trade

Prime cattle throughput in NI plants last week totalled 7,661 head, an increase of 427 cattle on the previous week, and an additional 1,386 prime cattle on the levels processed during the corresponding week of 2023. Last week 2,623 cows were processed in NI plants, the highest weekly cow throughput during the year to date, and an additional 599 head on the corresponding week of 2023. Direct slaughter imports from ROI also peaked last week with 644 prime cattle imported, the highest weekly level recorded during the year to date. This brings the total number of prime cattle imported from ROI for direct slaughter during the last six week period to 2,535 head. A strong consignment of 281 cows was imported from ROI to local plants last week, a decline of six head from the previous week when direct slaughter cow import levels peaked for the year to date. Cow imports from ROI totalled 1,293 head during the last six week period.

Last week in NI, the only category to report an overall decline was heifers, back 1.4p/kg to 483.5p/kg. The average price paid for steers was 483.9p/kg, up 2.8p/kg from the previous week with an R3 steer up 2.6p/kg to 492.3p/kg. Prices paid continue to track ahead of base quotes with 490.7p/kg paid on average last week for a U3 steer outside any bonus schemes. With local processors continuing to report tight supplies of cattle for slaughter producers are on the front foot for price negotiations and should price around the plants when selling stock.

### LAST WEEK'S DEADWEIGHT CATTLE PRICES (UK / ROI)

W/E 07/09/24	Northern Ireland	Rep of Ireland	Scotland	Northern England	Midlands & Wales	Southern England	GB
Steers	U3	491.2	437.1	511.1	510.1	508.7	518.3
	R3	492.3	429.1	513.0	508.9	505.4	510.3
	R4	489.2	429.3	513.6	508.1	503.5	509.1
	O3	486.7	417.5	506.2	496.2	490.1	495.7
	AVG	483.9	-	510.4	503.3	495.0	500.5
Heifers	U3	494.6	442.0	520.2	516.2	514.0	516.3
	R3	490.6	430.9	512.3	511.8	504.8	510.4
	R4	488.8	432.6	511.5	506.8	504.6	512.0
	O3	480.4	422.5	495.4	487.8	487.6	492.1
	AVG	483.5	-	510.7	501.7	494.8	495.7
Young Bulls	U3	487.6	430.7	503.3	505.6	508.7	508.1
	R3	477.7	423.9	501.4	502.7	498.2	498.5
	O3	465.0	411.8	473.3	466.7	472.7	481.3
	AVG	469.9	-	496.3	490.4	491.1	488.8
	Prime Cattle Price Reported	5,984	-	5,640	6,669	7,913	4,697
Cows	O3	358.0	370.9	395.0	388.7	387.5	393.0
	O4	361.5	371.1	396.7	393.2	388.0	396.6
	P2	323.3	337.4	358.9	351.4	349.5	355.3
	P3	344.6	356.9	395.0	364.4	363.7	374.5
	AVG	317.1	-	391.3	361.1	352.5	351.4

Notes: (i) Prices are p/kg Sterling-ROI prices converted at 1 euro=84.23p Stg  
(ii) Shading indicates a lower price than the previous week.  
(iii) AVG is the average of all grades in the category, not just those listed

## LIVEWEIGHT CATTLE TRADE

### LATEST LIVEWEIGHT CATTLE MART PRICES NI

W/E 07/09/24	1st QUALITY			2nd QUALITY		
	From	To	Avg	From	To	Avg
<b>Finished Cattle (p/kg)</b>						
Steers	280	316	293	215	279	245
Friesians	217	226	221	204	210	207
Heifers	255	288	267	200	254	225
Beef Cows	235	325	255	135	234	175
Dairy Cows	128	180	152	75	127	100
<b>Store Cattle (p/kg)</b>						
Steers up to 400kg	300	376	335	200	299	245
Steers 400kg - 500kg	285	349	305	205	284	240
Steers over 500kg	285	341	300	200	284	240
Heifers up to 450kg	290	352	320	200	289	240
Heifers over 450kg	255	304	275	210	254	230
<b>Dropped Calves (£/head)</b>						
Continental Bulls	380	680	450	270	375	320
Continental Heifers	355	655	430	225	350	270
Friesian Bulls	110	160	135	80	85	84
Holstein Bulls	-	-	-	70	90	80

## DEADWEIGHT SHEEP TRADE

### NI SHEEP BASE QUOTES

(P/Kg DW)	This Week 09/09/24	Next Week 16/09/24
R3 Lambs up to 22kg	595 - 600p	585 - 590p

### REPORTED NI SHEEP PRICES

(P/KG)	W/E 24/08/24	W/E 31/08/24	W/E 07/09/24
D/W R3 Lambs	611.1	607.4	593.3
D/W Lambs	613.5	607.2	593.9
L/W Lambs	555.0	534.4	521.6

### REGIONAL SHEEP PRICES (GB / ROI)

	W/E 24/08/24	W/E 31/08/24	W/E 07/09/24
GB D/W Lambs	665.5	663.5	654.5
ROI D/W Lambs	610.6	604.2	602.4

Base quotes for R3 lambs ended the week ranging from 585-590p/kg with plants paying up to 22kg. Base quotes received for early next week indicate a similar trade. In line with seasonal trends, the availability of lambs for slaughter has increased in recent weeks with throughput in local plants last week totalling 10,500 head. This was an increase of 1,465 head on the previous week and the largest weekly kill recorded during 2024 to date. Meanwhile, lamb exports to ROI for direct slaughter last week totalled 5,445 head, the highest level since early April.

With strong numbers of lambs coming onto the market, the trade for lambs has softened. Last week the deadweight lamb price in NI was back 13.3p/kg to 593.9p/kg. This remains 76.3p/kg ahead of the 517.6p/kg paid during the corresponding week of 2023. This equates to an increase of approximately £16.80 on the value of a 22kg carcass. In GB and ROI, the deadweight lamb trade also softened last week.

Last week the average lamb carcass weight in NI was ahead of previous weeks at 21.5kg, the heaviest weekly average reported for 18 weeks. Producers should ensure lambs are well covered and hides are clean before presentation at slaughter plants, with lambs grading R3 and R4 and possessing farm quality assured status securing maximum returns.

## LIVEWEIGHT SHEEP TRADE

### LATEST SHEEP MARTS (P/KG LW)

From: 07/09/24		Lambs			
To: 12/09/24		No	From	To	Avg
Saturday	Omagh	913	547	654	-
	Swatragh	1,300	541	571	-
Monday	Kilrea	850	540	587	-
	Markethill	1,090	530	602	-
Tuesday	Saintfield	790	505	560	-
	Rathfriland	850	505	600	530
Wednesday	Ballymena	2,110	500	556	520
	Enniskillen	702	483	600	-
	Armoyle	588	500	555	-