

Title: Calf registrations Northern Ireland August 2024

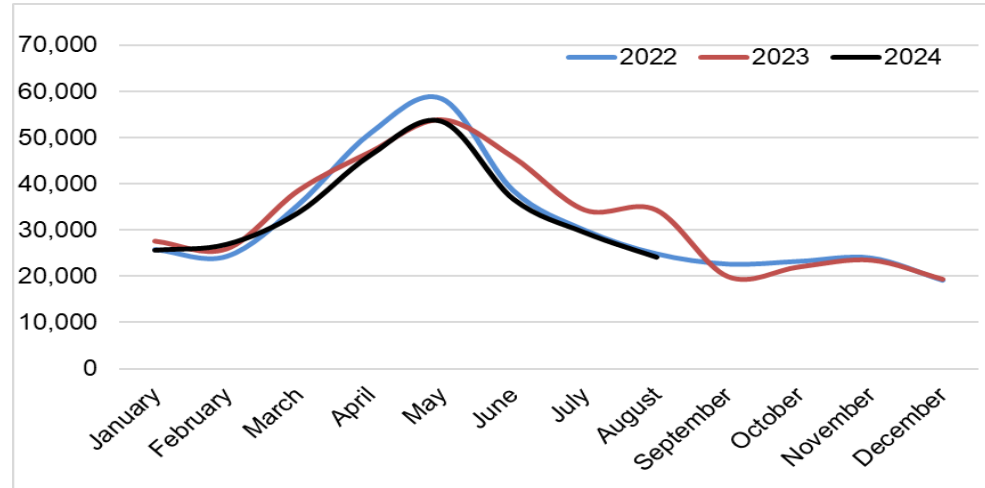
Source: Livestock and Meat Commission/NIFAIS data
 Date: 03 September 2024
 Contact: bulletin@lmcni.com
 Website www.lmcni.com

Market Information Department

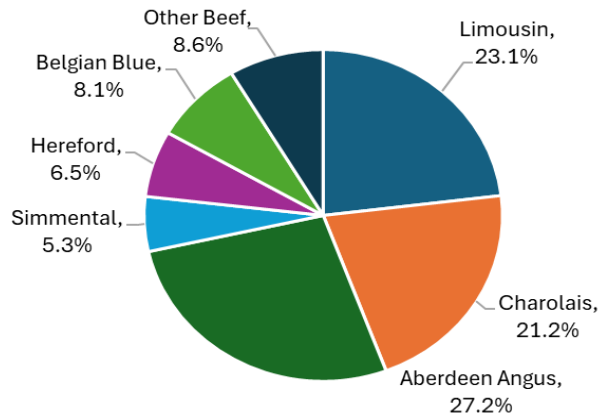


Total beef sired calf registrations

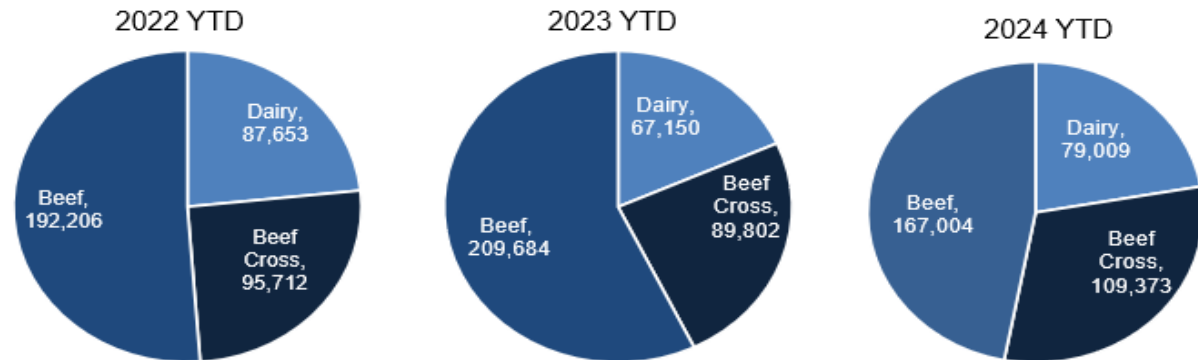
	2022	2023	2024	YoY% Diff
January	25,802	27,658	25,733	-7.0%
February	24,321	26,008	27,016	+3.9%
March	35,531	38,552	33,822	-12.3%
April	50,978	46,830	46,165	-1.4%
May	58,562	53,798	53,476	-0.6%
June	38,616	45,734	36,746	-19.7%
July	29,997	34,369	29,507	-14.1%
August	24,880	34,369	24,230	-29.5%
September	22,633	20,032		
October	23,245	22,128		
November	23,966	23,557		
December	19,123	19,457		
Total YTD	288,687	307,318	276,695	-10.0%



YTD Beef sired registration by breed



Total calf registrations by type



LMC does not guarantee the accuracy or completeness of any third party information provided in or included with this publication. LMC hereby disclaims any responsibility for error, omission or inaccuracy in the information, misinterpretation or any other loss, disappointment, negligence or damage caused by reliance on third party information.