

January 2016

Sources: NISRA, Invest NI and Global Entrepreneurship Monitor

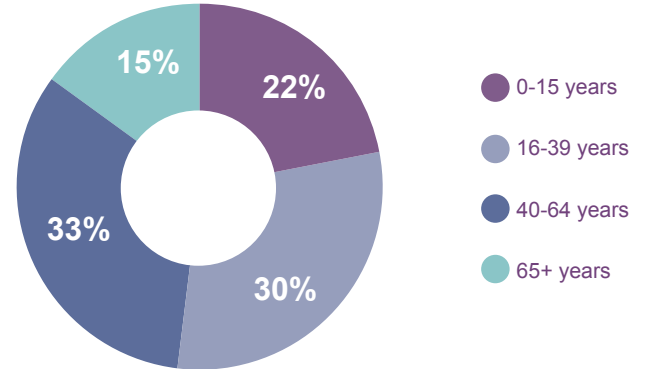
## Population (2014)

Total  
Population  
**114,992**



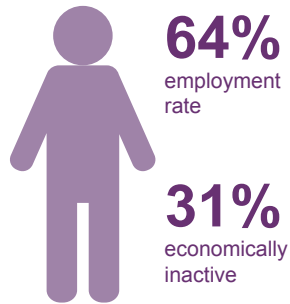
**6% of total  
NI population**

## Population by Age

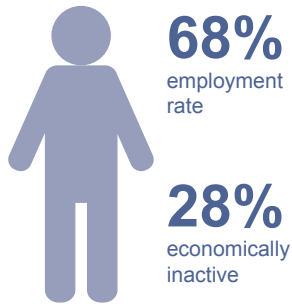


## Labour Market (2014)

Fermanagh & Omagh

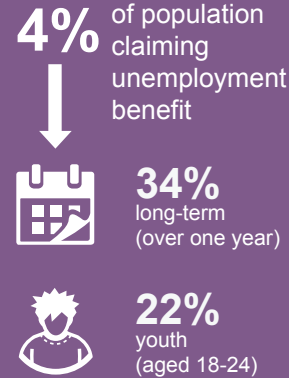


Northern Ireland

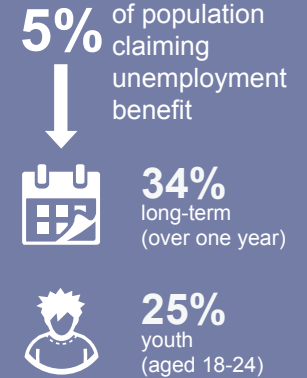


Labour market is composed of Economically Inactive and Economically Active (latter includes those in employment AND those seeking work)

Fermanagh & Omagh



Northern Ireland

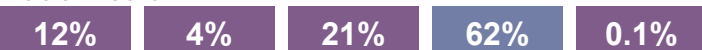


## Jobs (2013)

**38,444** employee jobs\*

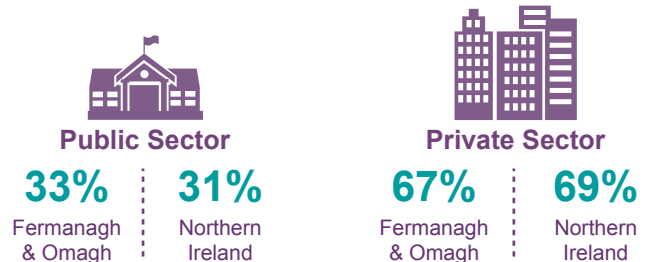


Northern Ireland



\*These figures do not include the self-employed or agricultural labour

## Public/Private Sector Employment



## Earnings (2014)

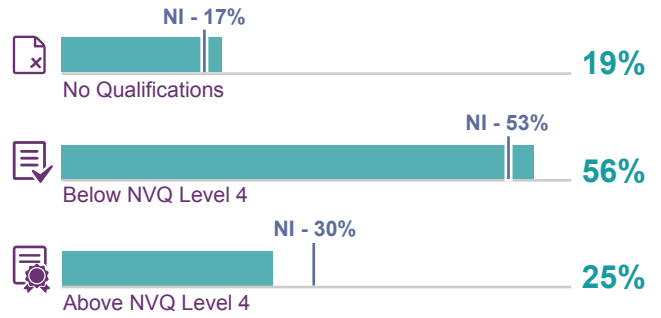


**£17,537** Fermanagh & Omagh

**£21,345** Northern Ireland

Median gross annual earnings by place of work for full-time private sector employees

## Qualifications (2014)



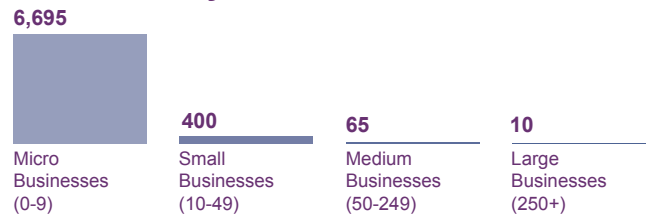
## Business Base (2014)

### Number of Registered Businesses



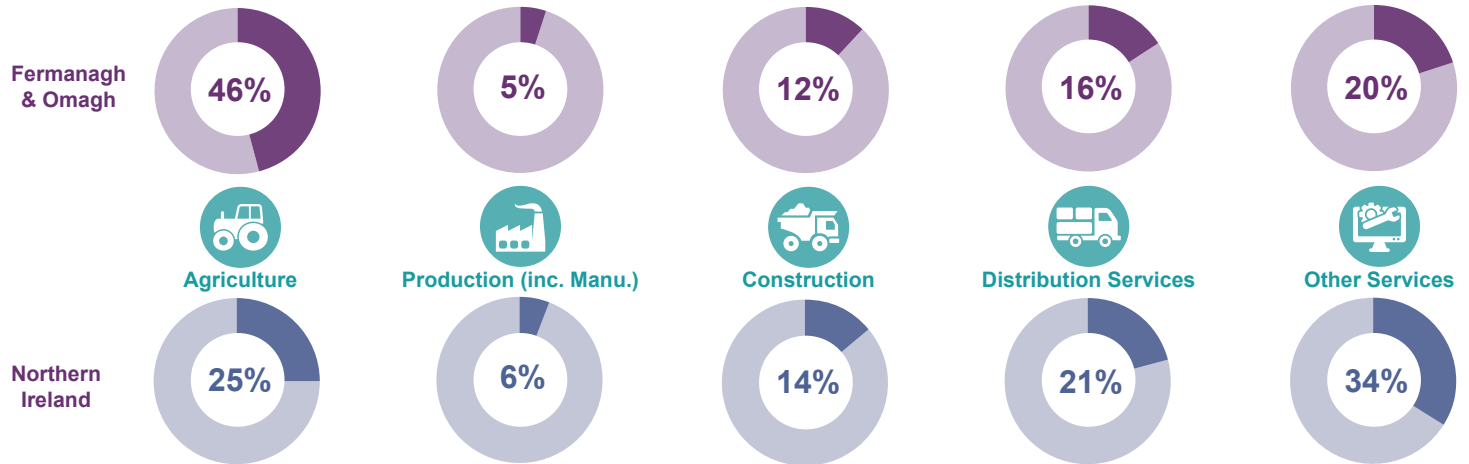
(This accounts for 11% of all the businesses in Northern Ireland)

### Businesses by Size

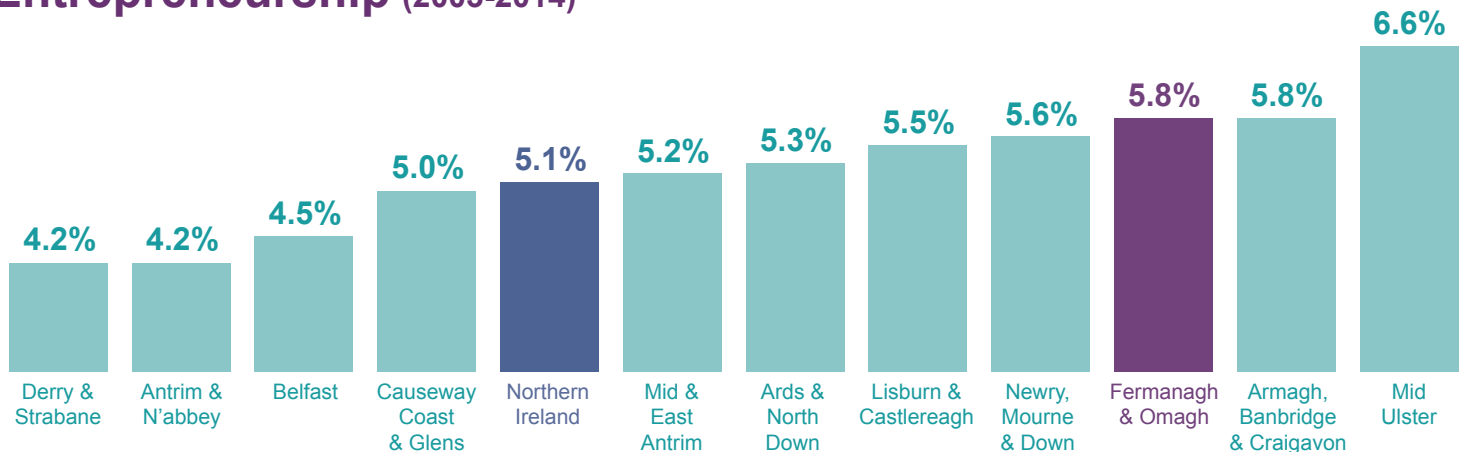


Sub-totals based on rounded data

### Businesses by Sector



## Entrepreneurship (2003-2014)



Based on the percentage of the population who have started or are in the process of starting a business

# Invest NI Support (2010-11 to 2014-15)

Support Provided by Invest NI

Total support = £17m



Business Investment Secured

Total investment = £93m



- Externally Owned Businesses
- Locally Owned Businesses

## Tourism

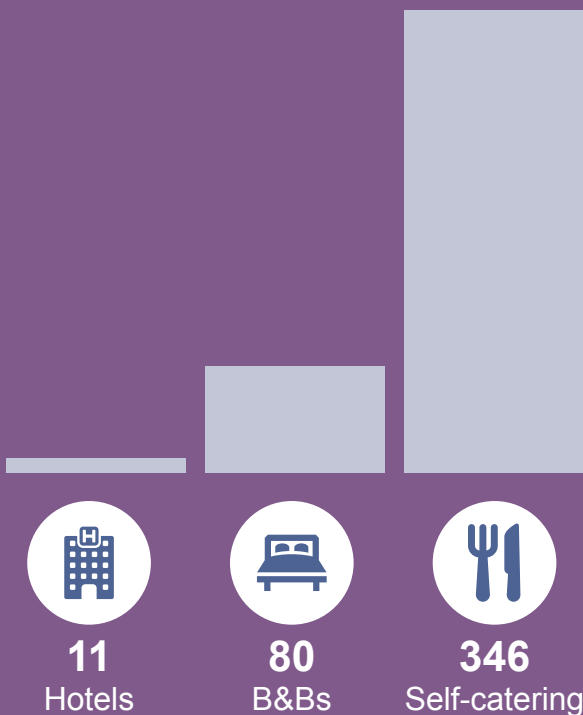
### Tourism Jobs (2013)



3,448 tourism jobs 

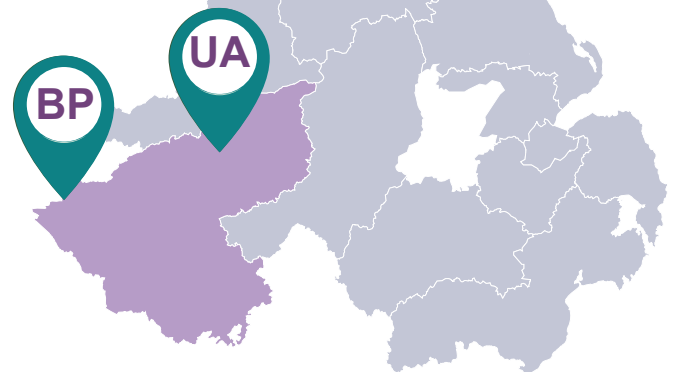
(8% of all jobs in Northern Ireland are within the tourist industry)

### Accommodation (2014)



### Visitor Attractions (2014)

0.9m visits to visitor attractions



Belleek Pottery Visitor Centre and the Ulster American Folk Park were the most popular visitor attractions in 2014

Find out more about Tourism NI