

Police Service of Northern Ireland

# Domestic Abuse Incidents and Crimes Recorded by the Police in Northern Ireland: Quarterly Update to 30 June 2016

Published 25 August 2016

# Domestic abuse incidents and crimes recorded by the police in Northern Ireland: Quarterly update to 30 June 2016

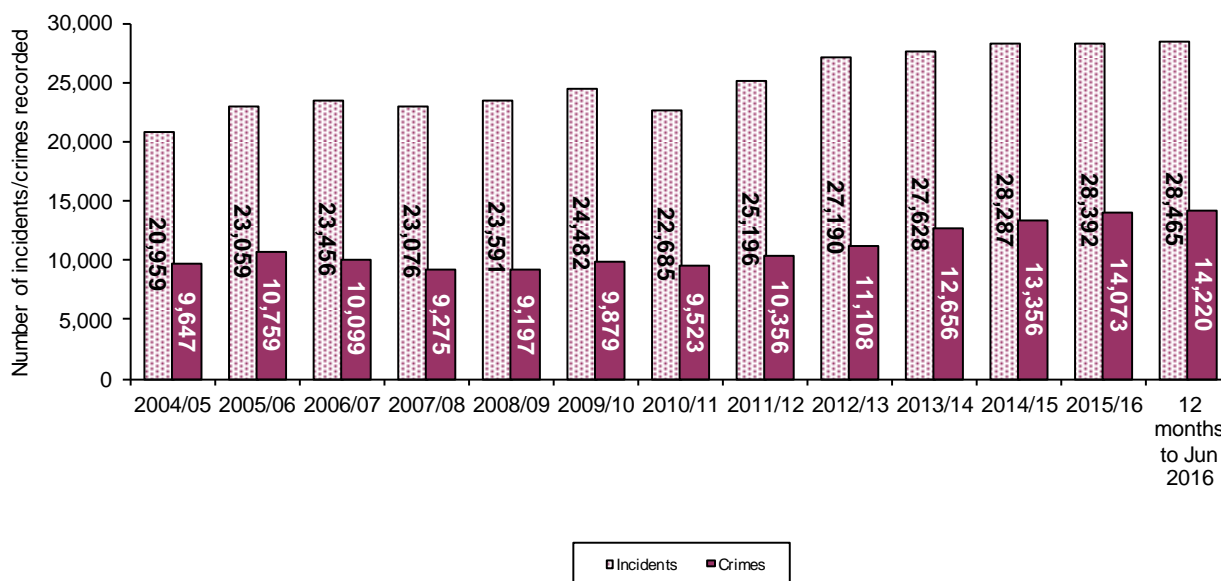
Published 25 August 2016

This quarterly bulletin presents the most recent statistics relating to domestic abuse incidents and crimes recorded by the police to 30 June 2016. Figures were compiled on 19 August 2016, using data extracted from the police administrative system on that date. Figures dating back to 1<sup>st</sup> April 2016 are provisional and will be subject to change until the finalised 2016/17 data are published in May 2017.

## OVERALL TRENDS IN DOMESTIC ABUSE INCIDENTS AND CRIMES

- Domestic abuse incidents have increased year on year since 2004/05, with the exception of two decreases recorded, a 1.6 per cent decrease between 2006/07 and 2007/08 and a 7.3 per cent decrease between 2009/10 and 2010/11. The figure of 28,465 incidents for the latest twelve months (July 2015 to June 2016) is the highest level recorded since 2004/05, and shows an increase of 0.3 per cent on the 2015/16 figure of 28,392.
- Domestic abuse crimes have tended to fluctuate since 2004/05, with the largest increase of 11.5 per cent occurring between 2004/05 and 2005/06 and the largest decrease of 8.2 per cent occurring between 2006/07 and 2007/08. The figure for the latest twelve months (14,220 crimes) is the highest level recorded since 2004/05, representing a 1.0 per cent increase on the 14,073 crimes recorded in 2015/16.

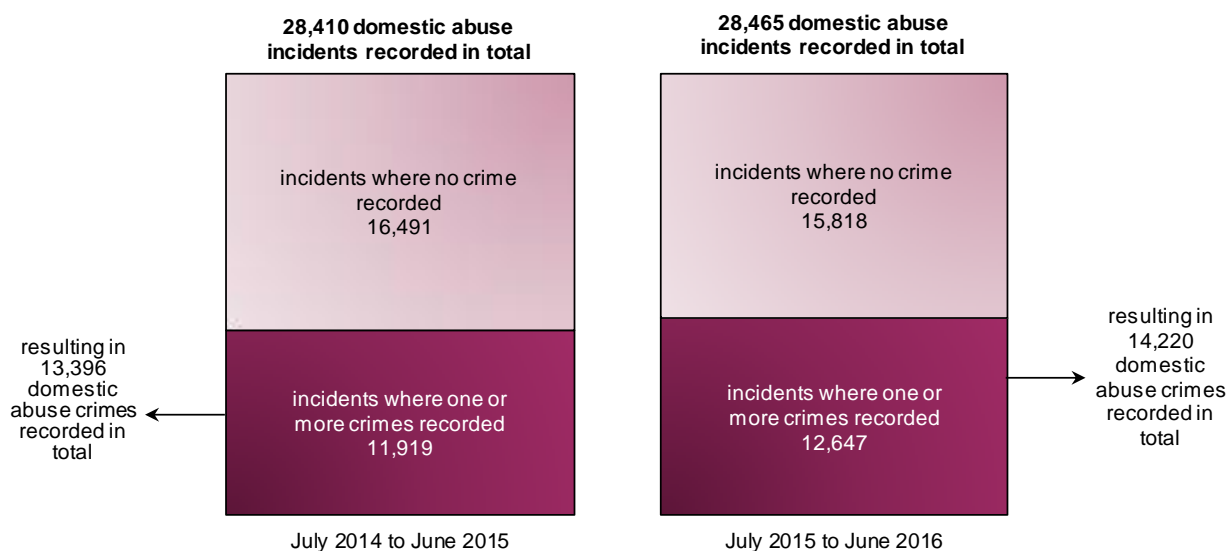
Figure 1 Trends in domestic abuse incidents and crimes



## COMPARISON OF LATEST 12 MONTHS WITH PREVIOUS 12 MONTHS

- In the twelve months to 30 June 2016 there were 28,465 incidents recorded where there was a domestic abuse motivation. Of these 28,465 incidents there were 15,818 which did not contain a crime (ie non-notifiable offences or incidents where the circumstances did not amount to an offence being committed). The remaining 12,647 incidents contained one or more crimes (amounting to 14,220 recorded crimes in total).

**Figure 2 Domestic abuse incidents and crimes**



**Table 1 Total number of domestic abuse incidents with and without crimes in the year to 30 June 2016 compared with the previous year**

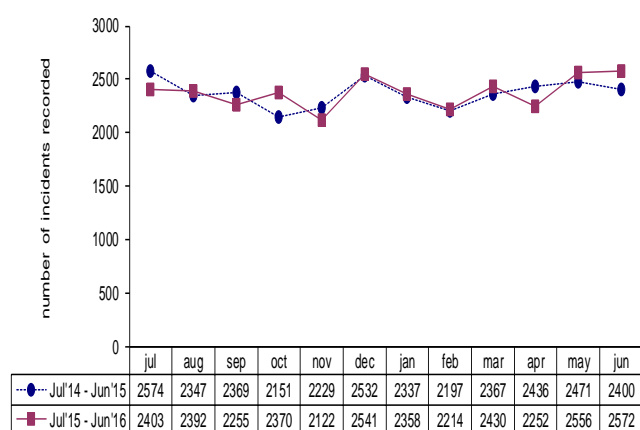
Domestic abuse Incidents	numbers		
	Jul'14 to Jun'15	Jul'15 to Jun'16	change
Incidents not containing any crime	16,491	15,818	-673
Incidents with one or more crimes recorded	11,919	12,647	728
<b>Total number of incidents</b>	<b>28,410</b>	<b>28,465</b>	<b>55</b>

**Table 2 Domestic abuse crimes in the year to 30 June 2016 compared with the previous year**

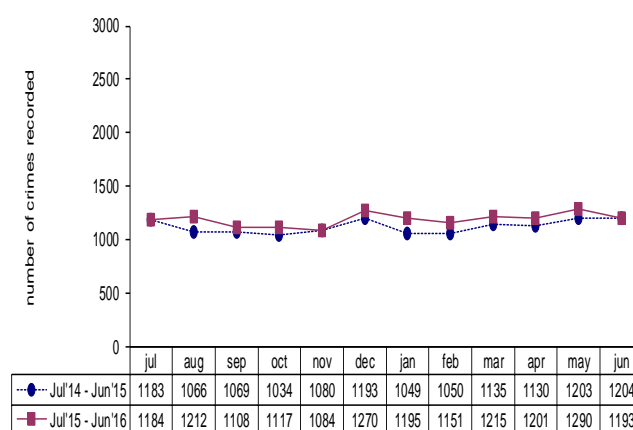
Domestic abuse Crimes	numbers		
	Jul'14 to Jun'15	Jul'15 to Jun'16	change
Domestic abuse crimes recorded	13,396	14,220	824

- Domestic abuse incidents recorded in the latest 12 months have largely mirrored the levels recorded in the previous 12 months but at a higher level for eight of the twelve months. At 28,465, the figure for the latest 12 months to June 2016 is 55 incidents higher than the previous 12 months figure of 28,410. The largest monthly increases were seen when comparing the months of October (219 incidents higher in 2015 than in 2014) and June (172 incidents higher in 2016 than in 2015). By comparison, the largest monthly decreases occurred in July (171 incidents lower in 2015 than in 2014), and April (184 incidents lower in 2016 than in 2015).
- There were 14,220 domestic abuse crimes recorded in the latest 12 months to June 2016 (an increase of 824 crimes on the previous 12 month period). The number of domestic abuse crimes recorded was higher in 11 out of the latest 12 months compared with the previous 12 months, with the higher levels recorded being particularly noticeable in August 2015 and January 2016 (both 146 crimes higher than the same months the previous year). June was the only month where a fall in crimes was recorded (11 crimes lower in 2016 than in 2015).
- The domestic abuse crime outcomes rate for the latest 12 months is 31.0%, 0.7 percentage points lower than the rate for the previous 12 months (31.7%).

**Figure 3 Domestic abuse incidents each month July 2015 to June 2016**



**Figure 4 Domestic abuse crimes each month July 2015 to June 2016**



**Table 3 Domestic abuse crimes and crime outcomes rates recorded in the year to 30 June 2016 compared with the previous year**

Crime Type	Numbers and percentages					
	Crimes Recorded			Crime Outcomes Rate (%)		
	12 months to Jun 2015	12 months to Jun 2016	% change between years	12 months to Jun 2015	12 months to Jun 2016	% point change
Violence against the person offences	9,590	10,176	6.1	26.9	26.3	-0.6
<i>Violence with injury (including homicide)</i>	3,783	3,983	5.3	33.1	33.1	0.0
<i>Violence without injury</i>	5,807	6,193	6.6	23.0	22.0	-0.9
Theft (including burglary) and criminal damage	2,188	2,345	7.2	42.6	42.0	-0.6
Breach of non-molestation order	919	878	-4.5	61.4	64.4	3.0
All other offences	699	821	17.5	23.3	21.3	-2.0
<b>Total crimes (domestic abuse motivation)</b>	<b>13,396</b>	<b>14,220</b>	<b>6.2</b>	<b>31.7</b>	<b>31.0</b>	<b>-0.7</b>

## NOTES

Unlike the Northern Ireland Crime Survey (NICS), police recorded crime figures do not include crimes that have not been reported to the police or those that the police decide not to record, but they do cover crimes against those aged under 16, organisations such as businesses, and crimes 'against the state' i.e. with no immediate victim (e.g. possession of drugs).

Like any administrative data, police recorded crime statistics are affected by the rules governing the recording of data, systems in place and operational decisions in respect of the allocation of resources. More proactive policing in a given area could lead to an increase in crimes recorded without any real change in underlying crime trends. These issues need to be taken into account when using these data.

As part of the **Review of Public Administration** which came into effect on 1<sup>st</sup> April 2015, PSNI has moved from eight to eleven policing districts, with the new policing model becoming fully operational at the end of September 2015.

From 1<sup>st</sup> April 2015 **Action Fraud** has taken responsibility for the central recording of fraud offences previously recorded by PSNI, with the result that fraud offences are no longer recorded by PSNI. As such, any reference to police recorded crime figures in this bulletin will exclude fraud offences. Further details are available in the latest police recorded crime monthly update, available on the [PSNI internet site](#).

### Time periods covered

The figures in this bulletin are presented on a financial year basis and, in this context:

- Quarter 1 refers to the months April, May and June
- Quarter 2 refers to the months July, August and September
- Quarter 3 refers to the months October, November and December
- Quarter 4 refers to the months January, February and March

### Data accuracy

Figures within the current year to date are provisional and will be subject to change until finalised figures for the full financial year are published in May 2016. While crimes included within the police recorded crime statistics for Northern Ireland are individually checked for compliance with the Home Office Counting Rules by the PSNI's Statistics Branch, the identification of a domestic abuse motivation is derived from a motivation 'tick box' on the system used by PSNI to record crime. The motivation is identified and completed by a police officer or member of police staff for each such reported incident or crime. The correct application of a domestic abuse motivation for all such incidents/crimes is not quality assured by the PSNI's Statistics Branch, but audits and data quality checks are routinely conducted in an attempt to ensure that any under or over-recording is corrected.

### Additional data

This bulletin shows a Northern Ireland level summary of domestic abuse incidents and crimes recorded by the police in the 12 months to June 2016. Accompanying this bulletin are additional data in the form of [excel summary tables](#) and [excel pivot table data](#). The data is also available in open data format.

The pivot tables allow the user to manipulate the data, select the data they are most interested in and carry out calculations on the data. The data records displayed in the pivot tables are also available in the same spreadsheet files. The pivot tables provide a range of data including domestic abuse incidents, domestic abuse crimes and crime outcomes where there is a domestic abuse motivation (both numbers and rates). Each of these data measures is available:

- at Northern Ireland level as well as for each policing district and policing area;
- for a range of crime types; and
- for a range of time periods (previous and current rolling 12 months, previous and current financial years to the end of the latest quarter and each of the last 8 quarters).

### Further information

Annual figures on domestic abuse incidents and crimes from 2004/05 to 2014/15 are available in the publication Trends in Domestic Abuse Incidents and Crimes Recorded by the Police in Northern Ireland 2004/05 to 2014/15, available at:

[https://www.psni.police.uk/globalassets/inside-the-psni/our-statistics/domestic-abuse-statistics/domestic\\_abuse\\_incidents\\_and\\_crimes\\_in\\_northern\\_ireland\\_2004-05\\_to\\_2014-15.pdf](https://www.psni.police.uk/globalassets/inside-the-psni/our-statistics/domestic-abuse-statistics/domestic_abuse_incidents_and_crimes_in_northern_ireland_2004-05_to_2014-15.pdf)

Further details on Police Recorded Crime statistics, including those with a domestic abuse motivation, are available in the [User Guide to Police Recorded Crime Statistics in Northern Ireland](#). This is a reference guide with explanatory notes regarding the issues and classifications which are key to the production and presentation of police recorded crime statistics. The [definition of domestic abuse](#) upon which these statistics are based is also available in this user guide and on the PSNI Internet site.

Copies of other PSNI publications are available from the PSNI Internet site:

<https://www.psni.police.uk/inside-psni/Statistics/>

For further information about the police recorded crime statistics for Northern Ireland, or to contact the PSNI Crime and Incident Statistician please:

Email: [statistics@psni.police.uk](mailto:statistics@psni.police.uk);

Write to: Statistics Branch, Lisnasharragh, 42 Montgomery Road, Belfast, BT6 9LD; or

Telephone: 028 9065 0222 ext 24135